

**REVIEW BY FORT BEND COUNTY COMMISSIONERS COURT**

On this 23rd day of February, 2016, Commissioners Court came on to be heard and reviewed the accompanying notice of Millis Equipment

Job Location Harvest Corner Dr & Harvest Garden Blvd, Richmond, TX 77406

Date 2/15/2016 Bond No. 106404934, Permit No. 2016-4908 to make use of certain Fort Bend County property subject to, "A Revised Order Regulating the Laying, Construction, Maintenance, and Repair of Buried Cables, Conduits, and Pole Lines, In, Under, Across or Along Roads, Streets, Highways, and Drainage Ditches in Fort Bend County, Texas, Under the Jurisdiction of the Commissioners Court of Fort Bend County, Texas," as passed by the Commissioners Court of Fort Bend County, Texas the 3rd day of August, 1987, recorded in Volume \_\_\_\_\_ of the Minutes of the Commissioners Court of Fort Bend County, Texas, to the extent that such order is not inconsistent with Article 1436a, Vernon's Texas Civil Statutes. Upon Motion of Commissioner Meyers, seconded by Commissioner Monson, duly put and carried, it is ORDERED, ADJUDGED AND DECREED that said notice of said above purpose is hereby acknowledged by the Commissioners Court of Fort Bend County, Texas, and that said notice be placed on record according to the regulation order thereof.

Notes:

1. Evidence of review by the Commissioners Court must be kept on the job site and failure to do so constitutes grounds for job shutdown.
2. Written notices are required:
  - a. 48 hours in advance of construction start up, and
  - b. when construction is completed and ready for final inspection

Mail notices to: Permit Administrator  
Fort Bend County Engineering  
301 Jackson Street  
Richmond, Texas 77469  
281-633-7500
3. This permit expires one (1) year from date of permit if construction has not commenced.

By: Charles O. [Signature]  
County Engineer

Presented to Commissioners Court and approved.

Recorded in Volume 2-23-16-13-L  
Minutes of Commissioners Court

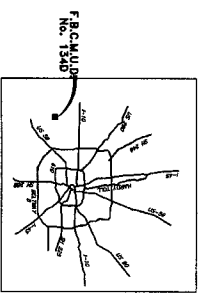
By: N/A  
Drainage District Engineer/Manager

Clerk of Commissioners Court

By: [Signature]  
Deputy



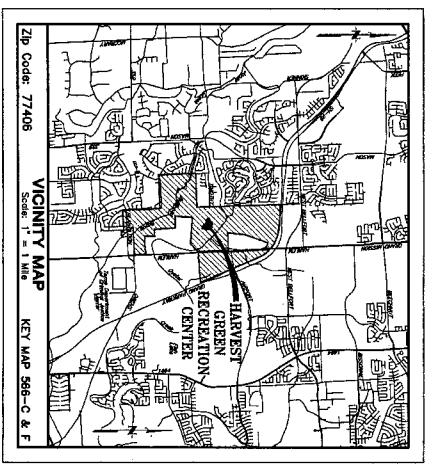
# CONSTRUCTION OF SITE WORK IN HARVEST GREEN RECREATION CENTER FOR FORT BEND COUNTY MUNICIPAL UTILITY DISTRICT No. 134D



**FORT BEND COUNTY ENGINEER**  
 ENGINEER: *[Signature]*  
 DATE: 11/27/16  
 THESE SPECIFICATIONS ARE FOR CONSTRUCTION  
 DATE OF APPROVAL: IN SHEET (1) FROM THESE  
 APPROVED: *[Signature]*  
 DEVELOPMENT CORPORATION  
 DATE: 11/16

## INDEX OF DRAWINGS

SHEET No.	TITLE
1	COVER SHEET & INDEX
2	UTILITY PLAN
3	DRAINAGE PLAN
4	DRAINAGE CALCULATION TABLES
5	DIMENSION AND PAVING PLAN
6	FIRE ACCESS ROAD
7	GRADING PLAN
8	GENERAL CONSTRUCTION NOTES
<b>DETAILS</b>	
9	MISCELLANEOUS DETAILS I
10	MISCELLANEOUS DETAILS II
11	MISCELLANEOUS DETAILS III
12	PAVEMENT MARKING DETAILS
13	STORM WATER POLLUTION PREVENTION PLAN DETAILS
14	STORM WATER POLLUTION PREVENTION PLAN DETAILS
15	1:00 FT. FED-12 CURB RAMPS



DECEMBER 2015

**J|C JONES | CARTER**  
 Texas Board of Professional Engineers Registration No. 7-439  
 22330 Marbach Way, Suite 210, Katy, TX 77449-8213/3400

**TEXAS! NOTIFICATION SYSTEM  
CALL BEFORE YOU DIG!!**  
 www.texas1.org  
 1-800-541-9877

Contractor shall notify the City of Houston, Department of Public Works and Engineering, Office of the City Engineer, 48 Howe Avenue, Houston, Texas 77002, telephone No. 281-359-2100.

**NOTES:**  
 These plans were prepared to meet or exceed the specifications and requirements of City of Houston and Fort Bend County as currently amended. Approval by Fort Bend County will be deemed void if construction has not begun within one year of approval date.  
 Construction shall not begin before the plot of this section is filed in the Fort Bend County Map Records.  
 Construction shall be monitored under the supervision of a licensed engineer.  
 Construction shall be under the supervision of a licensed engineer.  
 Contractor shall notify the Fort Bend County Engineering Department of intent to begin work to commencement of a final construction permit 01826202017X30V

I, Christopher C. Johnson, a Professional Engineer licensed in the State of Texas do hereby certify that these plans were prepared in accordance with the specifications and requirements of Fort Bend County, Texas.  
*[Signature]*  
 Christopher C. Johnson, P.E.  
 Date: 11/27/15



**J|C JONES | CARTER**  
 KATY, TEXAS

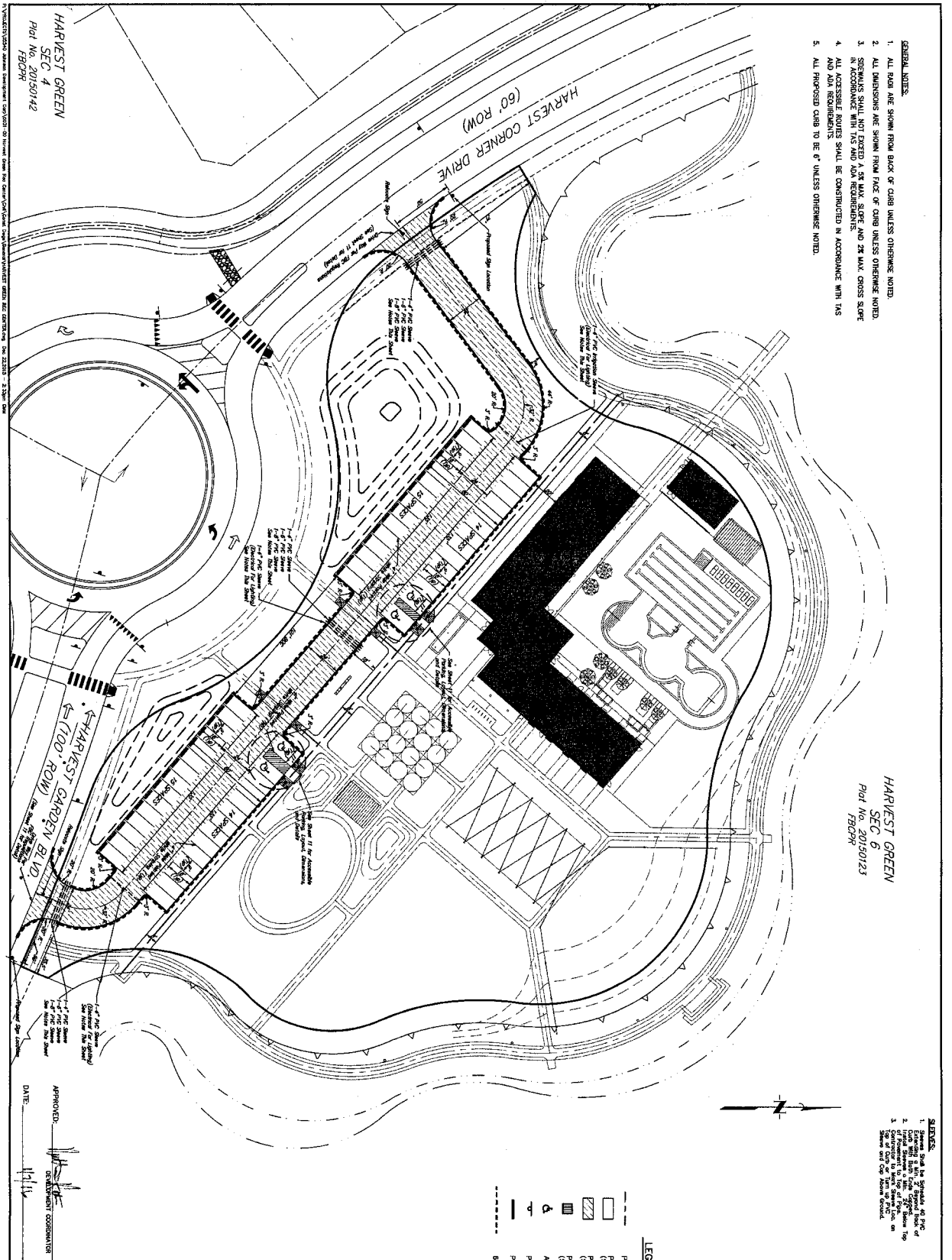
\P\Projects\2015\12\15\1511837\Drawings\01826202017X30V\INDEX.dwg 11/27/16 11:23 AM







- GENERAL NOTES:**
1. ALL DIMENSIONS ARE SHOWN FROM BACK OF CURB UNLESS OTHERWISE NOTED.
  2. ALL DIMENSIONS ARE SHOWN FROM FACE OF CURB UNLESS OTHERWISE NOTED.
  3. SIDEWALKS SHALL NOT EXCEED A 5% MAX. SLOPE AND 2% MAX. CROSS SLOPE IN ACCORDANCE WITH T&S AND ADA REQUIREMENTS.
  4. ALL ACCESSIBLE ROUTES SHALL BE CONSTRUCTED IN ACCORDANCE WITH T&S AND ADA REQUIREMENTS.
  5. ALL PROPOSED CURB TO BE 6" UNLESS OTHERWISE NOTED.



HARVEST GREEN  
SEC 6  
Plot No. 20150123  
FBCPR

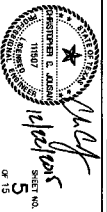
- NOTES:**
1. General Note and Schedule of Part of...
  2. All dimensions shown are unless noted...
  3. All dimensions shown are unless noted...

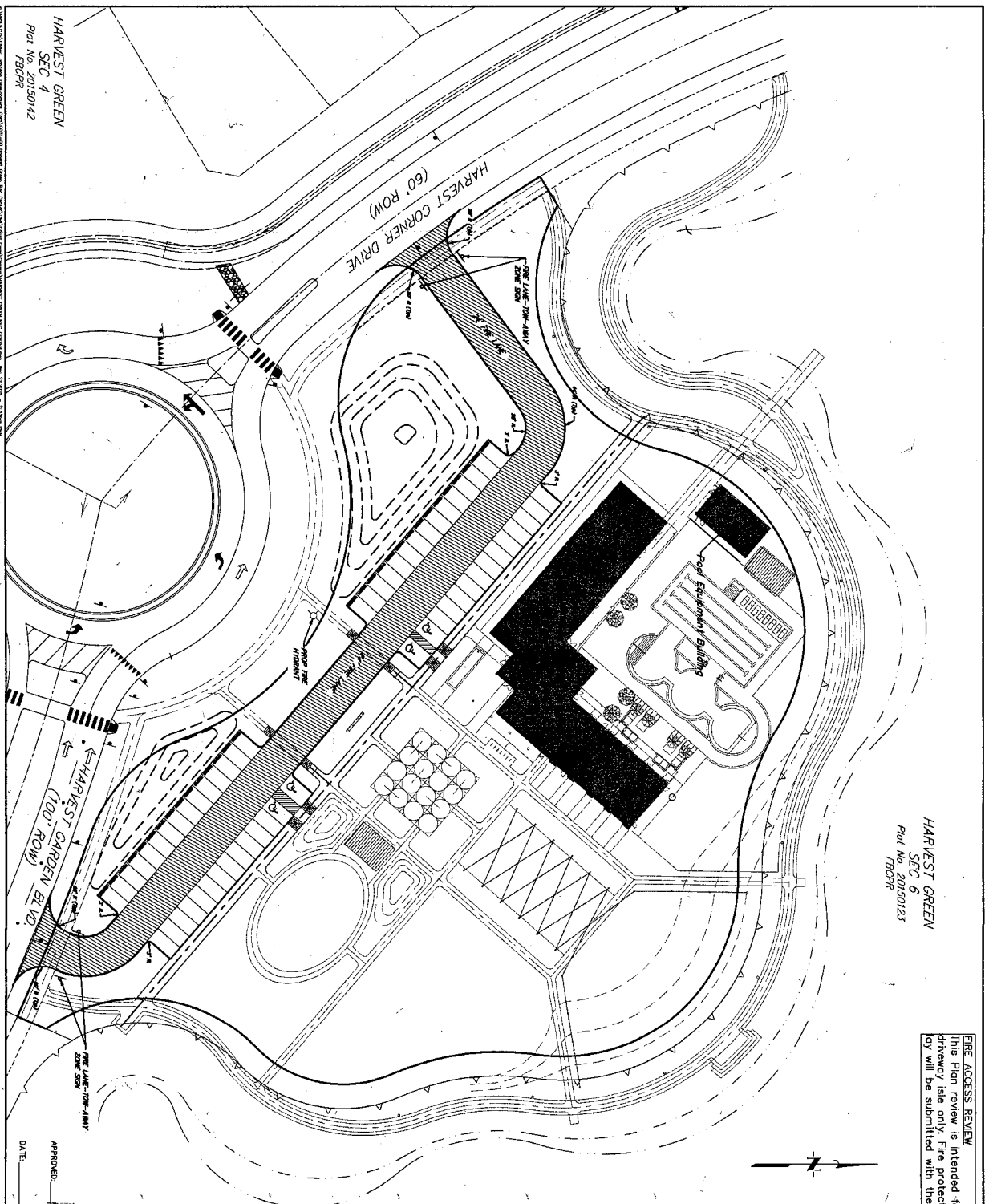
**BENCH MARK:**  
The 100-year base flood elevation is determined by the Fort Bend County Flood Insurance Rate Map for Fort Bend County, Texas, dated April 2, 2014, the subject of which is within the Unshaded Zone X1, determined to be outside the 500-year Flood Plain.  
Note: The 100-year base flood elevation is determined by the Fort Bend County Flood Insurance Rate Map for Fort Bend County, Texas, dated April 2, 2014, the subject of which is within the Unshaded Zone X1, determined to be outside the 500-year Flood Plain.

- LEGEND**
- PROPOSED SIDEWALK (BY OTHERS)
  - PROPOSED CONCRETE PAVEMENT (BY OTHERS)
  - ▨ PROPOSED CONCRETE PAVEMENT (BY OTHERS)
  - ▩ PROPOSED CONCRETE PAVEMENT (BY OTHERS)
  - ▧ PROPOSED ACCESSIBLE FANP (SEE DETAIL SHEET 10)
  - ▦ ACCESSIBLE SPACE
  - ▲ PROPOSED SIGN
  - PROPOSED WHEEL STOP
  - 5" CURB

APPROVED: \_\_\_\_\_  
DATE: \_\_\_\_\_

TITLE	DESIGN	DATE
HARVEST GREEN RECREATION CENTER		
DIMENSION AND PAVING PLAN		
JONES CARTER		
2229 Westchase Way, Suite 110, Fort Worth, TX 76102-2229		
SCALE:	AS SHOWN	DATE: 07/15/14
DRAWN BY:	DATE: 07/15/14	DATE: 07/15/14
CHECKED BY:	DATE: 07/15/14	DATE: 07/15/14
APPROVED BY:	DATE: 07/15/14	DATE: 07/15/14
SHEET NO. 5 OF 15		





HARVEST GREEN  
SEC 6  
Plot No. 20750123  
7/20/18

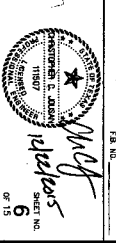
**FIRE ACCESS REVIEW**  
This Plan review is intended for parking lot and driveway use only. Fire protection sprinkler/hose (S) will be submitted with the building package.

**RECORD MARK**  
100'-Year Flood Elevation: 102.25' (see Flood Insurance Rate Map for Fort Bend County, Texas, Community Flood No. 483270144, dated April 2, 2014, for details).  
100'-Year Flood Depth: 1.00' (see Flood Insurance Rate Map for Fort Bend County, Texas, Community Flood No. 483270144, dated April 2, 2014, for details).  
Note: The 100'-Year Flood Elevation is determined to be outside the 500'-Year Flood Pool.  
Note: All elevations shown were obtained from original construction and utility records.

- LEGEND:**
- FIRE LANE
  - "100'-YEAR FLOOD ELEVATION" FLOOD PROTECTION LINE
  - PROPOSED WATERLINE
  - FIRE TRUCK
  - FIRE LANE - TOW-AWAY ZONE SIGN

**LANE MARKING SPECIFICATION**  
CURBS LOCATED BETWEEN APPROVED FIRE LANE - TOW-AWAY ZONE SIGN SHALL BE PAINTED RED OR A RED STRIPE SHALL BE PLACED ON THE CURB. THE SIGN SHALL BE COMPLETED AND LEGIBLY MARKED WITH THE MARKING "FIRE LANE - TOW-AWAY ZONE" IN WHITE LETTERS AT LEAST (3) INCHES IN HEIGHT. ALL INTERVALS NOT TO EXCEED (60) FEET.

APPROVED: \_\_\_\_\_  
DATE: \_\_\_\_\_



NO. LANE	REVISION	DATE

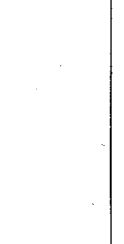
FORT BEND COUNTY MUD NO. 1340  
FORT BEND COUNTY, TEXAS

HARVEST GREEN RECREATION CENTER  
FIRE ACCESS ROAD

**JONES CARTER**  
Texas Board of Professional Engineers Registration No. 14877  
15250 Westpark Drive, Suite 200, Houston, TX 77058  
DATE: DECEMBER 2015  
JOB NO.: 2546-001-00  
SHEET NO.: 6  
OF 15

HARVEST GREEN  
SEC 4  
Plot No. 20750142  
7/20/18

APPROVED: \_\_\_\_\_  
DATE: \_\_\_\_\_



NO. LANE	REVISION	DATE

FORT BEND COUNTY MUD NO. 1340  
FORT BEND COUNTY, TEXAS

HARVEST GREEN RECREATION CENTER  
FIRE ACCESS ROAD

**JONES CARTER**  
Texas Board of Professional Engineers Registration No. 14877  
15250 Westpark Drive, Suite 200, Houston, TX 77058  
DATE: DECEMBER 2015  
JOB NO.: 2546-001-00  
SHEET NO.: 6  
OF 15



GENERAL CONSTRUCTION NOTES

- 1. CONTRACTOR SHALL BE RESPONSIBLE FOR OBTAINING ALL NECESSARY PERMITS AND APPROVALS FROM ALL APPLICABLE AGENCIES AND AGENCIES.
2. ALL WORK SHALL BE IN ACCORDANCE WITH THE LATEST EDITIONS OF THE INTERNATIONAL BUILDING CODES, THE INTERNATIONAL MECHANICAL AND ELECTRICAL CODES, THE INTERNATIONAL PLUMBING AND MECHANICAL CODES, THE INTERNATIONAL FIRE AND ALARM CODES, THE INTERNATIONAL ELECTRICAL CODE, THE INTERNATIONAL CODES FOR THE SAFETY OF LIFE AND PROPERTY, AND THE INTERNATIONAL CODES FOR THE SAFETY OF MARITIME NAVIGATION.
3. THE CONTRACTOR SHALL BE RESPONSIBLE FOR OBTAINING ALL NECESSARY PERMITS AND APPROVALS FROM ALL APPLICABLE AGENCIES AND AGENCIES.
4. ALL WORK SHALL BE IN ACCORDANCE WITH THE LATEST EDITIONS OF THE INTERNATIONAL BUILDING CODES, THE INTERNATIONAL MECHANICAL AND ELECTRICAL CODES, THE INTERNATIONAL PLUMBING AND MECHANICAL CODES, THE INTERNATIONAL FIRE AND ALARM CODES, THE INTERNATIONAL ELECTRICAL CODE, THE INTERNATIONAL CODES FOR THE SAFETY OF LIFE AND PROPERTY, AND THE INTERNATIONAL CODES FOR THE SAFETY OF MARITIME NAVIGATION.
5. THE CONTRACTOR SHALL BE RESPONSIBLE FOR OBTAINING ALL NECESSARY PERMITS AND APPROVALS FROM ALL APPLICABLE AGENCIES AND AGENCIES.

MINOR CONSTRUCTION NOTES

Table with columns: ITEM NO., DESCRIPTION, QUANTITY, UNIT, and CHECKBOXES for various construction items.

STANDARD GENERAL CONSTRUCTION NOTES

- 1. ALL WORK SHALL BE IN ACCORDANCE WITH THE LATEST EDITIONS OF THE INTERNATIONAL BUILDING CODES, THE INTERNATIONAL MECHANICAL AND ELECTRICAL CODES, THE INTERNATIONAL PLUMBING AND MECHANICAL CODES, THE INTERNATIONAL FIRE AND ALARM CODES, THE INTERNATIONAL ELECTRICAL CODE, THE INTERNATIONAL CODES FOR THE SAFETY OF LIFE AND PROPERTY, AND THE INTERNATIONAL CODES FOR THE SAFETY OF MARITIME NAVIGATION.
2. THE CONTRACTOR SHALL BE RESPONSIBLE FOR OBTAINING ALL NECESSARY PERMITS AND APPROVALS FROM ALL APPLICABLE AGENCIES AND AGENCIES.
3. ALL WORK SHALL BE IN ACCORDANCE WITH THE LATEST EDITIONS OF THE INTERNATIONAL BUILDING CODES, THE INTERNATIONAL MECHANICAL AND ELECTRICAL CODES, THE INTERNATIONAL PLUMBING AND MECHANICAL CODES, THE INTERNATIONAL FIRE AND ALARM CODES, THE INTERNATIONAL ELECTRICAL CODE, THE INTERNATIONAL CODES FOR THE SAFETY OF LIFE AND PROPERTY, AND THE INTERNATIONAL CODES FOR THE SAFETY OF MARITIME NAVIGATION.

STORM SEWER CONSTRUCTION NOTES

- 1. STORM SEWER SHALL BE INSTALLED WITH THE FOLLOWING SPECIFICATIONS:
2. ALL WORK SHALL BE IN ACCORDANCE WITH THE LATEST EDITIONS OF THE INTERNATIONAL BUILDING CODES, THE INTERNATIONAL MECHANICAL AND ELECTRICAL CODES, THE INTERNATIONAL PLUMBING AND MECHANICAL CODES, THE INTERNATIONAL FIRE AND ALARM CODES, THE INTERNATIONAL ELECTRICAL CODE, THE INTERNATIONAL CODES FOR THE SAFETY OF LIFE AND PROPERTY, AND THE INTERNATIONAL CODES FOR THE SAFETY OF MARITIME NAVIGATION.
3. THE CONTRACTOR SHALL BE RESPONSIBLE FOR OBTAINING ALL NECESSARY PERMITS AND APPROVALS FROM ALL APPLICABLE AGENCIES AND AGENCIES.

PAVING CONSTRUCTION NOTES

- 1. PAVING SHALL BE INSTALLED WITH THE FOLLOWING SPECIFICATIONS:
2. ALL WORK SHALL BE IN ACCORDANCE WITH THE LATEST EDITIONS OF THE INTERNATIONAL BUILDING CODES, THE INTERNATIONAL MECHANICAL AND ELECTRICAL CODES, THE INTERNATIONAL PLUMBING AND MECHANICAL CODES, THE INTERNATIONAL FIRE AND ALARM CODES, THE INTERNATIONAL ELECTRICAL CODE, THE INTERNATIONAL CODES FOR THE SAFETY OF LIFE AND PROPERTY, AND THE INTERNATIONAL CODES FOR THE SAFETY OF MARITIME NAVIGATION.
3. THE CONTRACTOR SHALL BE RESPONSIBLE FOR OBTAINING ALL NECESSARY PERMITS AND APPROVALS FROM ALL APPLICABLE AGENCIES AND AGENCIES.

LANDING NOTES

- 1. LANDING SHALL BE INSTALLED WITH THE FOLLOWING SPECIFICATIONS:
2. ALL WORK SHALL BE IN ACCORDANCE WITH THE LATEST EDITIONS OF THE INTERNATIONAL BUILDING CODES, THE INTERNATIONAL MECHANICAL AND ELECTRICAL CODES, THE INTERNATIONAL PLUMBING AND MECHANICAL CODES, THE INTERNATIONAL FIRE AND ALARM CODES, THE INTERNATIONAL ELECTRICAL CODE, THE INTERNATIONAL CODES FOR THE SAFETY OF LIFE AND PROPERTY, AND THE INTERNATIONAL CODES FOR THE SAFETY OF MARITIME NAVIGATION.
3. THE CONTRACTOR SHALL BE RESPONSIBLE FOR OBTAINING ALL NECESSARY PERMITS AND APPROVALS FROM ALL APPLICABLE AGENCIES AND AGENCIES.

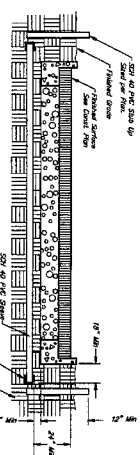


Fort Bend County, Texas
Seal of Fort Bend County, Texas

Approval and signature block containing: APPROVED, DATE, and JONES CARTER logo with project details for Harvest Green Recreation Center.

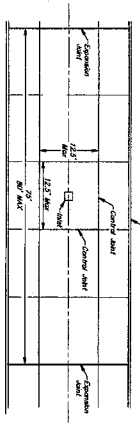
TABLE 1. THURST BLOCK DIMENSIONS IN FEET AND INCHES.

THURST BLOCK TYPE	LENGTH	WIDTH	HEIGHT	THURST
1	1'-0"	1'-0"	8"	1/2"
2	1'-0"	1'-0"	8"	3/4"
3	1'-0"	1'-0"	8"	1"
4	1'-0"	1'-0"	8"	1 1/4"
5	1'-0"	1'-0"	8"	1 1/2"
6	1'-0"	1'-0"	8"	1 3/4"
7	1'-0"	1'-0"	8"	2"
8	1'-0"	1'-0"	8"	2 1/4"
9	1'-0"	1'-0"	8"	2 1/2"
10	1'-0"	1'-0"	8"	2 3/4"
11	1'-0"	1'-0"	8"	3"
12	1'-0"	1'-0"	8"	3 1/4"
13	1'-0"	1'-0"	8"	3 1/2"
14	1'-0"	1'-0"	8"	3 3/4"
15	1'-0"	1'-0"	8"	4"
16	1'-0"	1'-0"	8"	4 1/4"
17	1'-0"	1'-0"	8"	4 1/2"
18	1'-0"	1'-0"	8"	4 3/4"
19	1'-0"	1'-0"	8"	5"
20	1'-0"	1'-0"	8"	5 1/4"
21	1'-0"	1'-0"	8"	5 1/2"
22	1'-0"	1'-0"	8"	5 3/4"
23	1'-0"	1'-0"	8"	6"
24	1'-0"	1'-0"	8"	6 1/4"
25	1'-0"	1'-0"	8"	6 1/2"
26	1'-0"	1'-0"	8"	6 3/4"
27	1'-0"	1'-0"	8"	7"
28	1'-0"	1'-0"	8"	7 1/4"
29	1'-0"	1'-0"	8"	7 1/2"
30	1'-0"	1'-0"	8"	7 3/4"
31	1'-0"	1'-0"	8"	8"
32	1'-0"	1'-0"	8"	8 1/4"
33	1'-0"	1'-0"	8"	8 1/2"
34	1'-0"	1'-0"	8"	8 3/4"
35	1'-0"	1'-0"	8"	9"
36	1'-0"	1'-0"	8"	9 1/4"
37	1'-0"	1'-0"	8"	9 1/2"
38	1'-0"	1'-0"	8"	9 3/4"
39	1'-0"	1'-0"	8"	10"
40	1'-0"	1'-0"	8"	10 1/4"
41	1'-0"	1'-0"	8"	10 1/2"
42	1'-0"	1'-0"	8"	10 3/4"
43	1'-0"	1'-0"	8"	11"
44	1'-0"	1'-0"	8"	11 1/4"
45	1'-0"	1'-0"	8"	11 1/2"
46	1'-0"	1'-0"	8"	11 3/4"
47	1'-0"	1'-0"	8"	12"
48	1'-0"	1'-0"	8"	12 1/4"
49	1'-0"	1'-0"	8"	12 1/2"
50	1'-0"	1'-0"	8"	12 3/4"
51	1'-0"	1'-0"	8"	13"
52	1'-0"	1'-0"	8"	13 1/4"
53	1'-0"	1'-0"	8"	13 1/2"
54	1'-0"	1'-0"	8"	13 3/4"
55	1'-0"	1'-0"	8"	14"
56	1'-0"	1'-0"	8"	14 1/4"
57	1'-0"	1'-0"	8"	14 1/2"
58	1'-0"	1'-0"	8"	14 3/4"
59	1'-0"	1'-0"	8"	15"
60	1'-0"	1'-0"	8"	15 1/4"
61	1'-0"	1'-0"	8"	15 1/2"
62	1'-0"	1'-0"	8"	15 3/4"
63	1'-0"	1'-0"	8"	16"
64	1'-0"	1'-0"	8"	16 1/4"
65	1'-0"	1'-0"	8"	16 1/2"
66	1'-0"	1'-0"	8"	16 3/4"
67	1'-0"	1'-0"	8"	17"
68	1'-0"	1'-0"	8"	17 1/4"
69	1'-0"	1'-0"	8"	17 1/2"
70	1'-0"	1'-0"	8"	17 3/4"
71	1'-0"	1'-0"	8"	18"
72	1'-0"	1'-0"	8"	18 1/4"
73	1'-0"	1'-0"	8"	18 1/2"
74	1'-0"	1'-0"	8"	18 3/4"
75	1'-0"	1'-0"	8"	19"
76	1'-0"	1'-0"	8"	19 1/4"
77	1'-0"	1'-0"	8"	19 1/2"
78	1'-0"	1'-0"	8"	19 3/4"
79	1'-0"	1'-0"	8"	20"
80	1'-0"	1'-0"	8"	20 1/4"
81	1'-0"	1'-0"	8"	20 1/2"
82	1'-0"	1'-0"	8"	20 3/4"
83	1'-0"	1'-0"	8"	21"
84	1'-0"	1'-0"	8"	21 1/4"
85	1'-0"	1'-0"	8"	21 1/2"
86	1'-0"	1'-0"	8"	21 3/4"
87	1'-0"	1'-0"	8"	22"
88	1'-0"	1'-0"	8"	22 1/4"
89	1'-0"	1'-0"	8"	22 1/2"
90	1'-0"	1'-0"	8"	22 3/4"
91	1'-0"	1'-0"	8"	23"
92	1'-0"	1'-0"	8"	23 1/4"
93	1'-0"	1'-0"	8"	23 1/2"
94	1'-0"	1'-0"	8"	23 3/4"
95	1'-0"	1'-0"	8"	24"
96	1'-0"	1'-0"	8"	24 1/4"
97	1'-0"	1'-0"	8"	24 1/2"
98	1'-0"	1'-0"	8"	24 3/4"
99	1'-0"	1'-0"	8"	25"
100	1'-0"	1'-0"	8"	25 1/4"
101	1'-0"	1'-0"	8"	25 1/2"
102	1'-0"	1'-0"	8"	25 3/4"
103	1'-0"	1'-0"	8"	26"
104	1'-0"	1'-0"	8"	26 1/4"
105	1'-0"	1'-0"	8"	26 1/2"
106	1'-0"	1'-0"	8"	26 3/4"
107	1'-0"	1'-0"	8"	27"
108	1'-0"	1'-0"	8"	27 1/4"
109	1'-0"	1'-0"	8"	27 1/2"
110	1'-0"	1'-0"	8"	27 3/4"
111	1'-0"	1'-0"	8"	28"
112	1'-0"	1'-0"	8"	28 1/4"
113	1'-0"	1'-0"	8"	28 1/2"
114	1'-0"	1'-0"	8"	28 3/4"
115	1'-0"	1'-0"	8"	29"
116	1'-0"	1'-0"	8"	29 1/4"
117	1'-0"	1'-0"	8"	29 1/2"
118	1'-0"	1'-0"	8"	29 3/4"
119	1'-0"	1'-0"	8"	30"
120	1'-0"	1'-0"	8"	30 1/4"
121	1'-0"	1'-0"	8"	30 1/2"
122	1'-0"	1'-0"	8"	30 3/4"
123	1'-0"	1'-0"	8"	31"
124	1'-0"	1'-0"	8"	31 1/4"
125	1'-0"	1'-0"	8"	31 1/2"
126	1'-0"	1'-0"	8"	31 3/4"
127	1'-0"	1'-0"	8"	32"
128	1'-0"	1'-0"	8"	32 1/4"
129	1'-0"	1'-0"	8"	32 1/2"
130	1'-0"	1'-0"	8"	32 3/4"
131	1'-0"	1'-0"	8"	33"
132	1'-0"	1'-0"	8"	33 1/4"
133	1'-0"	1'-0"	8"	33 1/2"
134	1'-0"	1'-0"	8"	33 3/4"
135	1'-0"	1'-0"	8"	34"
136	1'-0"	1'-0"	8"	34 1/4"
137	1'-0"	1'-0"	8"	34 1/2"
138	1'-0"	1'-0"	8"	34 3/4"
139	1'-0"	1'-0"	8"	35"
140	1'-0"	1'-0"	8"	35 1/4"
141	1'-0"	1'-0"	8"	35 1/2"
142	1'-0"	1'-0"	8"	35 3/4"
143	1'-0"	1'-0"	8"	36"
144	1'-0"	1'-0"	8"	36 1/4"
145	1'-0"	1'-0"	8"	36 1/2"
146	1'-0"	1'-0"	8"	36 3/4"
147	1'-0"	1'-0"	8"	37"
148	1'-0"	1'-0"	8"	37 1/4"
149	1'-0"	1'-0"	8"	37 1/2"
150	1'-0"	1'-0"	8"	37 3/4"
151	1'-0"	1'-0"	8"	38"
152	1'-0"	1'-0"	8"	38 1/4"
153	1'-0"	1'-0"	8"	38 1/2"
154	1'-0"	1'-0"	8"	38 3/4"
155	1'-0"	1'-0"	8"	39"
156	1'-0"	1'-0"	8"	39 1/4"
157	1'-0"	1'-0"	8"	39 1/2"
158	1'-0"	1'-0"	8"	39 3/4"
159	1'-0"	1'-0"	8"	40"
160	1'-0"	1'-0"	8"	40 1/4"
161	1'-0"	1'-0"	8"	40 1/2"
162	1'-0"	1'-0"	8"	40 3/4"
163	1'-0"	1'-0"	8"	41"
164	1'-0"	1'-0"	8"	41 1/4"
165	1'-0"	1'-0"	8"	41 1/2"
166	1'-0"	1'-0"	8"	41 3/4"
167	1'-0"	1'-0"	8"	42"
168	1'-0"	1'-0"	8"	42 1/4"
169	1'-0"	1'-0"	8"	42 1/2"
170	1'-0"	1'-0"	8"	42 3/4"
171	1'-0"	1'-0"	8"	43"
172	1'-0"	1'-0"	8"	43 1/4"
173	1'-0"	1'-0"	8"	43 1/2"
174	1'-0"	1'-0"	8"	43 3/4"
175	1'-0"	1'-0"	8"	44"
176	1'-0"	1'-0"	8"	44 1/4"
177	1'-0"	1'-0"	8"	44 1/2"
178	1'-0"	1'-0"	8"	44 3/4"
179	1'-0"	1'-0"	8"	45"
180	1'-0"	1'-0"	8"	45 1/4"
181	1'-0"	1'-0"	8"	45 1/2"
182	1'-0"	1'-0"	8"	45 3/4"
183	1'-0"	1'-0"	8"	46"
184	1'-0"	1'-0"	8"	46 1/4"
185	1'-0"	1'-0"	8"	46 1/2"
186	1'-0"	1'-0"	8"	46 3/4"
187	1'-0"	1'-0"	8"	47"
188	1'-0"	1'-0"	8"	47 1/4"
189	1'-0"	1'-0"	8"	47 1/2"
190	1'-0"	1'-0"	8"	47 3/4"
191	1'-0"	1'-0"	8"	48"
192	1'-0"	1'-0"	8"	48 1/4"
193	1'-0"	1'-0"	8"	48 1/2"
194	1'-0"	1'-0"	8"	48 3/4"
195	1'-0"	1'-0"	8"	49"
196	1'-0"	1'-0"	8"	49 1/4"
197	1'-0"	1'-0"	8"	49 1/2"
198	1'-0"	1'-0"	8"	49 3/4"
199	1'-0"	1'-0"	8"	50"
200	1'-0"	1'-0"	8"	50 1/4"
201	1'-0"	1'-0"	8"	50 1/2"
202	1'-0"	1'-0"	8"	50 3/4"
203	1'-0"	1'-0"	8"	51"
204	1'-0"	1'-0"	8"	51 1/4"
205	1'-0"	1'-0"	8"	51 1/2"
206	1'-0"	1'-0"	8"	51 3/4"
207	1'-0"	1'-0"	8"	52"
208	1'-0"	1'-0"	8"	52 1/4"
209	1'-0"	1'-0"	8"	52 1/2"
210	1'-0"	1'-0"	8"	52 3/4"
211	1'-0"	1'-0"	8"	53"
212	1'-0"	1'-0"	8"	53 1/4"
213	1'-0"	1'-0"	8"	53 1/2"
214	1'-0"	1'-0"	8"	53 3/4"
215	1'-0"	1'-0"	8"	54"
216	1'-0"	1'-0"	8"	54 1/4"
217	1'-0"	1'-0"	8"	54 1/2"
218	1'-0"	1'-0"	8"	54 3/4"
219	1'-0"	1'-0"	8"	55"
220	1'-0"	1'-0"	8"	55 1/4"
221	1'-0"	1'-0"	8"	55 1/2"
222	1'-0"	1'-0"	8"	55 3/4"
223	1'-0"	1'-0"	8"	56"
224	1'-0"	1'-0"	8"	56 1/4"
225	1'-0"	1'-0"	8"	56 1/2"
226	1'-0"	1'-0"	8"	56 3/4"
227	1'-0"	1'-0"	8"	57"
228	1'-0"	1'-0"	8"	57 1/4"
229	1'-0"	1'-0"	8"	57 1/2"
230	1'-0"	1'-0"	8"	57 3/4"
231	1'-0"	1'-0"	8"	58"
232	1'-0"	1'-0"	8"	58 1/4"
233	1'-0"	1'-0"	8"	58 1/2"
234	1'-0"	1'-0"	8"	58 3/4"
235	1'-0"	1'-0"	8"	59"
236	1'-0"	1'-0"	8"	59 1/4"
237	1'-0"	1'-0"	8"	59 1/2"
238	1'-0"	1'-0"	8"	59 3/4"
239	1'-0"	1'-0"	8"	

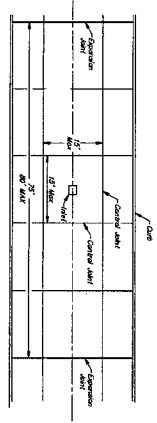


**SLEEVING DETAIL**  
N.T.S.

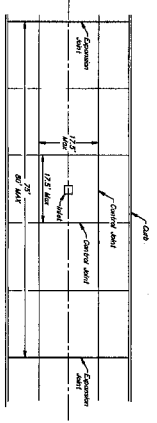
1. SLEEVES UNDER EXISTING PAVEMENT SHALL BE BORED.
2. SLEEVES SHALL BE SCHEDULE 40 PIPE EXPOSED A MIN. 2' BEYOND BACK OF CURB WITH CURB OFFSET.
3. INSTALL A MIN. 2" BELLOW TOP OF PAVEMENT TO TOP OF PIPE.
4. CONTRIBUTE TO MARK LOCATION ON CURB BY CHISELED MARK.



**JOINT SPACING AND LAYOUT DETAIL FOR 5" CONCRETE PAVEMENT**  
N.T.S.



**JOINT SPACING AND LAYOUT DETAIL FOR 6" CONCRETE PAVEMENT**  
N.T.S.

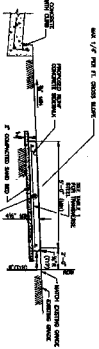


**JOINT SPACING AND LAYOUT DETAIL FOR 7" CONCRETE PAVEMENT**  
N.T.S.

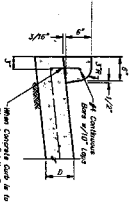
**TABLE 1**

ITEM NO.	DESCRIPTION	QUANTITY	UNIT
1	CONCRETE PAVEMENT		SQ. YD.
2	CONCRETE CURB		LINEAL FT.
3	CONCRETE SIDEWALK		SQ. YD.
4	CONCRETE DRIVEWAY		SQ. YD.
5	CONCRETE PARKING AREA		SQ. YD.

- NOTES:**
1. ALL CONCRETE SHALL BE CLASS 3000.
  2. ALL CONCRETE SHALL BE PLACED AND FINISHED IN ACCORDANCE WITH THE STANDARD SPECIFICATIONS FOR CONCRETE PAVEMENT, LATEST EDITION, AS APPLICABLE.
  3. ALL CONCRETE SHALL BE PLACED AND FINISHED IN ACCORDANCE WITH THE STANDARD SPECIFICATIONS FOR CONCRETE CURB AND GUTTERS, LATEST EDITION, AS APPLICABLE.
  4. ALL CONCRETE SHALL BE PLACED AND FINISHED IN ACCORDANCE WITH THE STANDARD SPECIFICATIONS FOR CONCRETE SIDEWALKS, LATEST EDITION, AS APPLICABLE.
  5. ALL CONCRETE SHALL BE PLACED AND FINISHED IN ACCORDANCE WITH THE STANDARD SPECIFICATIONS FOR CONCRETE DRIVEWAYS, LATEST EDITION, AS APPLICABLE.
  6. ALL CONCRETE SHALL BE PLACED AND FINISHED IN ACCORDANCE WITH THE STANDARD SPECIFICATIONS FOR CONCRETE PARKING AREAS, LATEST EDITION, AS APPLICABLE.



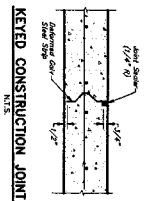
**TYPICAL SIDEWALK DETAIL**  
N.T.S.



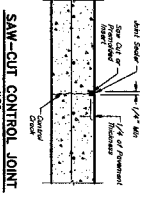
**ALTERNATE CONCRETE CURB REINFORCEMENT**  
N.T.S.

**DOWELLED-ON CURB**  
N.T.S.

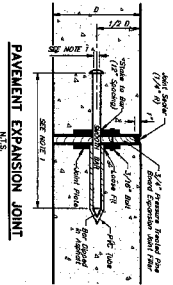
FINISH SHALL BE ACCORDANCE TO FINISHING, STRIP FINISHING AND TIE-IN REQUIREMENTS. REINFORCING BARS SHALL BE PLACED IN ACCORDANCE WITH THE STANDARD SPECIFICATIONS FOR CONCRETE CURB AND GUTTERS, LATEST EDITION, AS APPLICABLE.



**KEYED CONSTRUCTION JOINT**  
N.T.S.

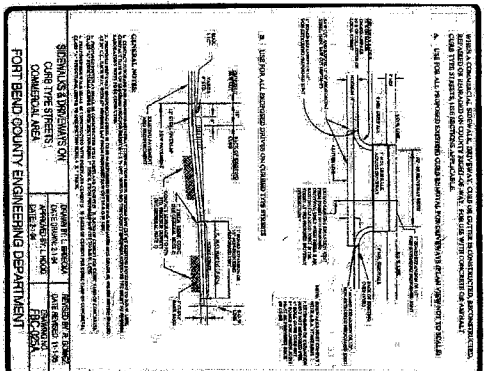


**SAW-CUT CONTROL JOINT**  
N.T.S.

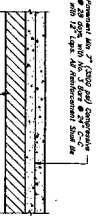


**PAVEMENT EXPANSION JOINT**  
N.T.S.

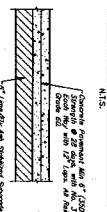
1. ALL PROPOSED JOINTS FOR EXPANSION JOINTS ARE TO BE FINISHED AT 12' CURBS AND CONSIST OF THE FOLLOWING: 3/4" DIAMETER DOWELS, 12" LONG WITH 6' SPACING; 3/4" DIAMETER DOWELS, 14" LONG WITH 6' SPACING.



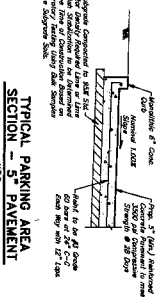
**TYPICAL PARKING AREA SECTION - 5' PAVEMENT**  
N.T.S.



**TYPICAL 7" PAVEMENT SECTION**  
N.T.S.



**TYPICAL 6" PAVEMENT SECTION**  
N.T.S.



**TYPICAL PARKING AREA SECTION - 5' PAVEMENT**  
N.T.S.

**GENERAL NOTES FOR SIDEWALKS AND DRIVEWAYS**

1. SAW CUT FINISH CURB AT EACH END AND NOTCH OUT CURB FROM SIDEWALK TO END OF PROPOSED DRIVEWAY.
2. SAW CUT FINISH DRIVEWAY AND FINISH OF 12" FINISH AWAY FROM DRIVEWAY TO END OF PROPOSED DRIVEWAY.
3. FINISH DRIVEWAY TO MATCH EXISTING DRIVEWAY.
4. FINISH DRIVEWAY TO MATCH EXISTING DRIVEWAY.
5. FINISH DRIVEWAY TO MATCH EXISTING DRIVEWAY.
6. FINISH DRIVEWAY TO MATCH EXISTING DRIVEWAY.
7. FINISH DRIVEWAY TO MATCH EXISTING DRIVEWAY.
8. FINISH DRIVEWAY TO MATCH EXISTING DRIVEWAY.
9. FINISH DRIVEWAY TO MATCH EXISTING DRIVEWAY.
10. FINISH DRIVEWAY TO MATCH EXISTING DRIVEWAY.

**CONSTRUCTION NOTES FOR SIDEWALKS & DRIVEWAYS WITH CURB TYPE STREETS COMMERCIAL AREA**

1. FINISH DRIVEWAY TO MATCH EXISTING DRIVEWAY.
2. FINISH DRIVEWAY TO MATCH EXISTING DRIVEWAY.
3. FINISH DRIVEWAY TO MATCH EXISTING DRIVEWAY.
4. FINISH DRIVEWAY TO MATCH EXISTING DRIVEWAY.
5. FINISH DRIVEWAY TO MATCH EXISTING DRIVEWAY.
6. FINISH DRIVEWAY TO MATCH EXISTING DRIVEWAY.
7. FINISH DRIVEWAY TO MATCH EXISTING DRIVEWAY.
8. FINISH DRIVEWAY TO MATCH EXISTING DRIVEWAY.
9. FINISH DRIVEWAY TO MATCH EXISTING DRIVEWAY.
10. FINISH DRIVEWAY TO MATCH EXISTING DRIVEWAY.

APPROVED: \_\_\_\_\_  
DEVELOPMENT COORDINATOR

DATE: 11/16

**JONES CARTER**  
This is a certified true and correct copy of the original drawing as shown to the client on 11/16/16.

**MISCELLANEOUS DETAILS II**

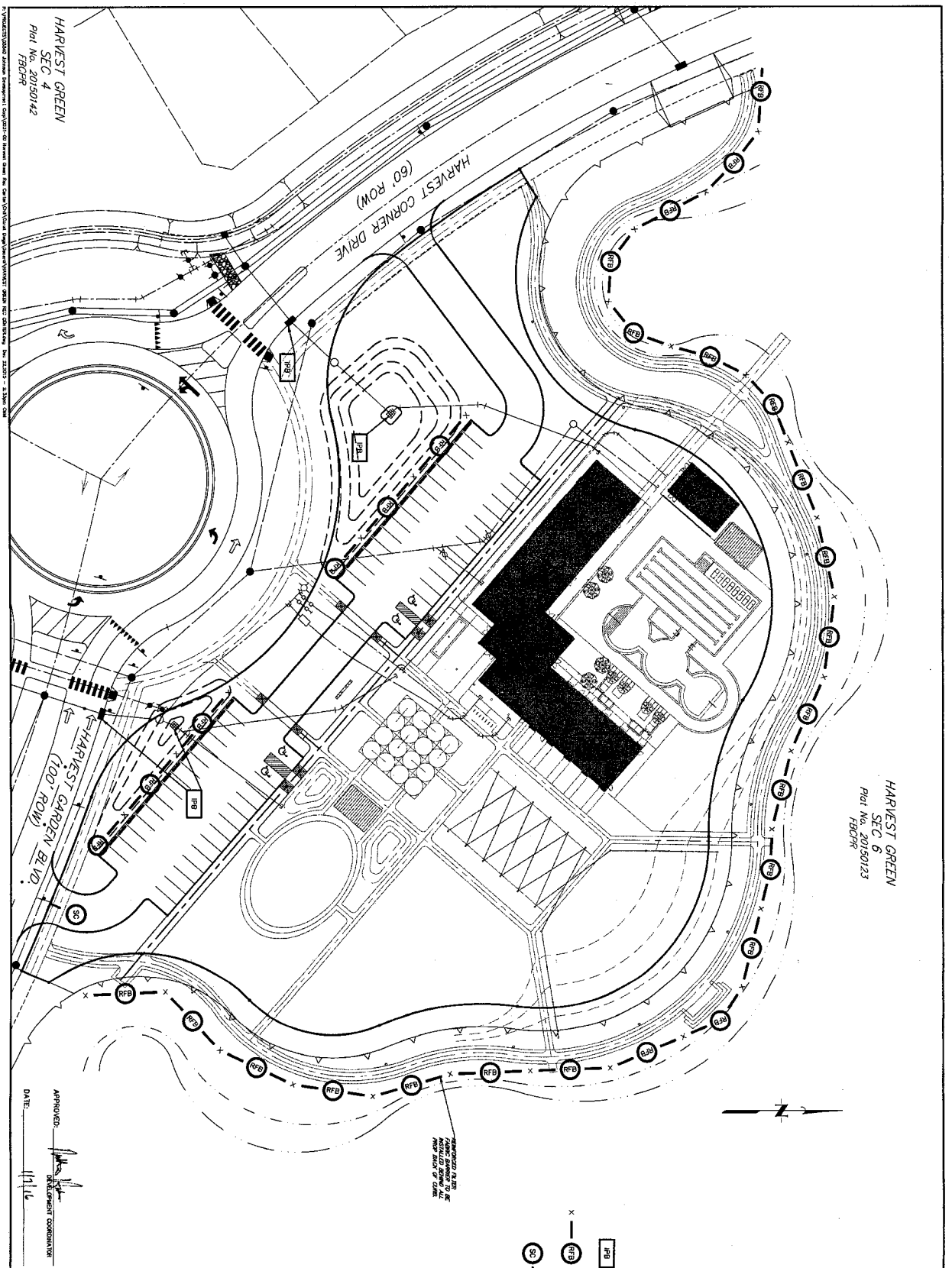
**FORT BEND COUNTY WWD No. 1340**  
FORT BEND COUNTY, TEXAS

**HARVEST GREEN RECREATION CENTER**

**CONTRACT NO. 5500-003-00**  
SCALE: 1/8" = 1'-0"  
DATE: DECEMBER 2015  
DRAWN BY: JLB  
CHECKED BY: JLB  
DATE: 11/16/16  
SHEET NO. 10 OF 15





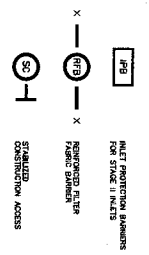


HARVEST GREEN  
SEC 6  
Plot No. 20150123  
FBCPR

**BENCH MARK**  
2008 FORT BEND COUNTY UTM BENCHMARK NO. 22, 746  
ELEVATION: 102.15 FT. (31.17 M)  
NAD 83  
NOTE: ALL ELEVATIONS SHOWN WERE DERIVED FROM  
SPOT/RTK OBSERVATIONS AND OTHER SOURCES.

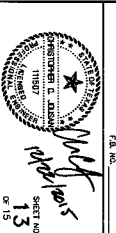
**100-Year Flood Risk**  
ASTROFOUL, of the  
Federal Emergency Management Agency's Flood  
Insurance Rate Map dated April 2, 2014, the  
Undershed Zone "X" is defined as areas  
determined to be outside the 500-Year Flood  
Pool.

**Note:** The 100-Year Base Flood Elevation is  
102.15 feet. The 500-Year Base Flood Elevation is  
102.15 feet. The Flood Insurance Rate Map for Fort Bend County,  
Texas Commission on Flood Risk, 03/20/2014, sheet  
section 83.0, is contained in the attached  
sheet of the observation point.



RETENTION BASIN AS INDICATED BY THE HIGH POINT OF THE CURB

APPROVED: *[Signature]*  
DATE: 11/16



**J.C. JONES-CARTER**  
Texas Board of Professional Engineer Registration, No. 4438  
15-3297  
DATE: DECEMBER 2015  
JOB NO. 8560-001-00  
SHEET NO. 13 OF 15

**HARVEST GREEN RECREATION CENTER  
STORM WATER POLLUTION  
PREVENTION PLAN**

FORT BEND COUNTY MUD No. 1340  
FORT BEND COUNTY, TEXAS

NO.	REVISIONS	DATE

HARVEST GREEN  
SEC 4  
Plot No. 20150142  
FBCPR

The undersigned hereby certifies that the information furnished herein is true and correct to the best of his knowledge and belief, and that he is a duly licensed Professional Engineer in the State of Texas.

**RECTANGULAR  
 FILTER FABRIC FENCE**



- CONSTRUCTION NOTES:**
1. SET POSTS AT REQUIRED SPACING AND SECURE WITH TIEING TO POSTS
  2. SECURE WITH TIEING TO POSTS
  3. ATTACH FILTER FABRIC TO POSTS AND INSTALL OVER THE EXPOSED SOIL. THE TIEING SHOULD BE DONE AT THE END OF EACH POST.
  4. ATTACH FILTER FABRIC TO POSTS AND INSTALL OVER THE EXPOSED SOIL. THE TIEING SHOULD BE DONE AT THE END OF EACH POST.
  5. ATTACH FILTER FABRIC TO POSTS AND INSTALL OVER THE EXPOSED SOIL. THE TIEING SHOULD BE DONE AT THE END OF EACH POST.

**TRIANGULAR  
 FILTER FABRIC FENCE**



- CONSTRUCTION NOTES:**
1. SET POSTS AT REQUIRED SPACING AND SECURE WITH TIEING TO POSTS
  2. SECURE WITH TIEING TO POSTS
  3. ATTACH FILTER FABRIC TO POSTS AND INSTALL OVER THE EXPOSED SOIL. THE TIEING SHOULD BE DONE AT THE END OF EACH POST.
  4. ATTACH FILTER FABRIC TO POSTS AND INSTALL OVER THE EXPOSED SOIL. THE TIEING SHOULD BE DONE AT THE END OF EACH POST.
  5. ATTACH FILTER FABRIC TO POSTS AND INSTALL OVER THE EXPOSED SOIL. THE TIEING SHOULD BE DONE AT THE END OF EACH POST.

**STRAW BALE FENCE**



- CONSTRUCTION NOTES:**
1. SET POSTS AT REQUIRED SPACING AND SECURE WITH TIEING TO POSTS
  2. SECURE WITH TIEING TO POSTS
  3. ATTACH STRAW BALES TO POSTS AND INSTALL OVER THE EXPOSED SOIL. THE TIEING SHOULD BE DONE AT THE END OF EACH POST.
  4. ATTACH STRAW BALES TO POSTS AND INSTALL OVER THE EXPOSED SOIL. THE TIEING SHOULD BE DONE AT THE END OF EACH POST.
  5. ATTACH STRAW BALES TO POSTS AND INSTALL OVER THE EXPOSED SOIL. THE TIEING SHOULD BE DONE AT THE END OF EACH POST.

**BRUSH BERM**



- CONSTRUCTION NOTES:**
1. SET POSTS AT REQUIRED SPACING AND SECURE WITH TIEING TO POSTS
  2. SECURE WITH TIEING TO POSTS
  3. ATTACH BRUSH MATS TO POSTS AND INSTALL OVER THE EXPOSED SOIL. THE TIEING SHOULD BE DONE AT THE END OF EACH POST.
  4. ATTACH BRUSH MATS TO POSTS AND INSTALL OVER THE EXPOSED SOIL. THE TIEING SHOULD BE DONE AT THE END OF EACH POST.
  5. ATTACH BRUSH MATS TO POSTS AND INSTALL OVER THE EXPOSED SOIL. THE TIEING SHOULD BE DONE AT THE END OF EACH POST.

**REINFORCED  
 FILTER FABRIC BARRIER**



- CONSTRUCTION NOTES:**
1. SET POSTS AT REQUIRED SPACING AND SECURE WITH TIEING TO POSTS
  2. SECURE WITH TIEING TO POSTS
  3. ATTACH REINFORCED FILTER FABRIC TO POSTS AND INSTALL OVER THE EXPOSED SOIL. THE TIEING SHOULD BE DONE AT THE END OF EACH POST.
  4. ATTACH REINFORCED FILTER FABRIC TO POSTS AND INSTALL OVER THE EXPOSED SOIL. THE TIEING SHOULD BE DONE AT THE END OF EACH POST.
  5. ATTACH REINFORCED FILTER FABRIC TO POSTS AND INSTALL OVER THE EXPOSED SOIL. THE TIEING SHOULD BE DONE AT THE END OF EACH POST.

**INLET PROTECTION  
 BARRIERS FOR  
 STAGE I INLETS**



- CONSTRUCTION NOTES:**
1. SET POSTS AT REQUIRED SPACING AND SECURE WITH TIEING TO POSTS
  2. SECURE WITH TIEING TO POSTS
  3. ATTACH FILTER FABRIC TO POSTS AND INSTALL OVER THE EXPOSED SOIL. THE TIEING SHOULD BE DONE AT THE END OF EACH POST.
  4. ATTACH FILTER FABRIC TO POSTS AND INSTALL OVER THE EXPOSED SOIL. THE TIEING SHOULD BE DONE AT THE END OF EACH POST.
  5. ATTACH FILTER FABRIC TO POSTS AND INSTALL OVER THE EXPOSED SOIL. THE TIEING SHOULD BE DONE AT THE END OF EACH POST.

**STABILIZED CONSTRUCTION ACCESS**



- CONSTRUCTION NOTES:**
1. SET POSTS AT REQUIRED SPACING AND SECURE WITH TIEING TO POSTS
  2. SECURE WITH TIEING TO POSTS
  3. ATTACH FILTER FABRIC TO POSTS AND INSTALL OVER THE EXPOSED SOIL. THE TIEING SHOULD BE DONE AT THE END OF EACH POST.
  4. ATTACH FILTER FABRIC TO POSTS AND INSTALL OVER THE EXPOSED SOIL. THE TIEING SHOULD BE DONE AT THE END OF EACH POST.
  5. ATTACH FILTER FABRIC TO POSTS AND INSTALL OVER THE EXPOSED SOIL. THE TIEING SHOULD BE DONE AT THE END OF EACH POST.

**INLET PROTECTION  
 BARRIERS FOR  
 STAGE II INLETS**



- CONSTRUCTION NOTES:**
1. SET POSTS AT REQUIRED SPACING AND SECURE WITH TIEING TO POSTS
  2. SECURE WITH TIEING TO POSTS
  3. ATTACH FILTER FABRIC TO POSTS AND INSTALL OVER THE EXPOSED SOIL. THE TIEING SHOULD BE DONE AT THE END OF EACH POST.
  4. ATTACH FILTER FABRIC TO POSTS AND INSTALL OVER THE EXPOSED SOIL. THE TIEING SHOULD BE DONE AT THE END OF EACH POST.
  5. ATTACH FILTER FABRIC TO POSTS AND INSTALL OVER THE EXPOSED SOIL. THE TIEING SHOULD BE DONE AT THE END OF EACH POST.

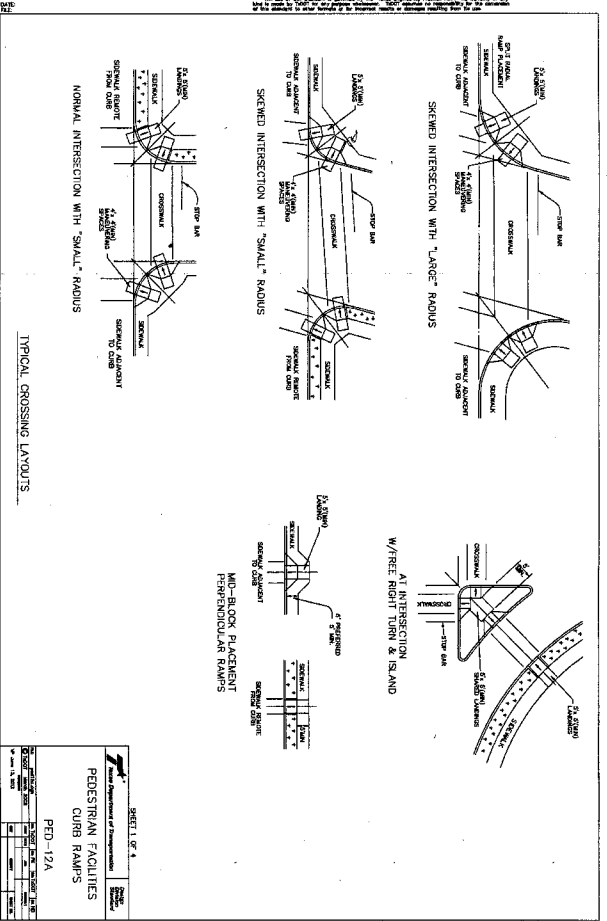
**JONES CARTER**  
 2230 Woodward Way, Suite 200, Fort Bend County, Texas 77429  
 Phone: (281) 281-1100  
 Fax: (281) 281-1101  
 Email: info@jonescarter.com

**FORT BEND COUNTY  
 ENGINEERING DEPARTMENT**

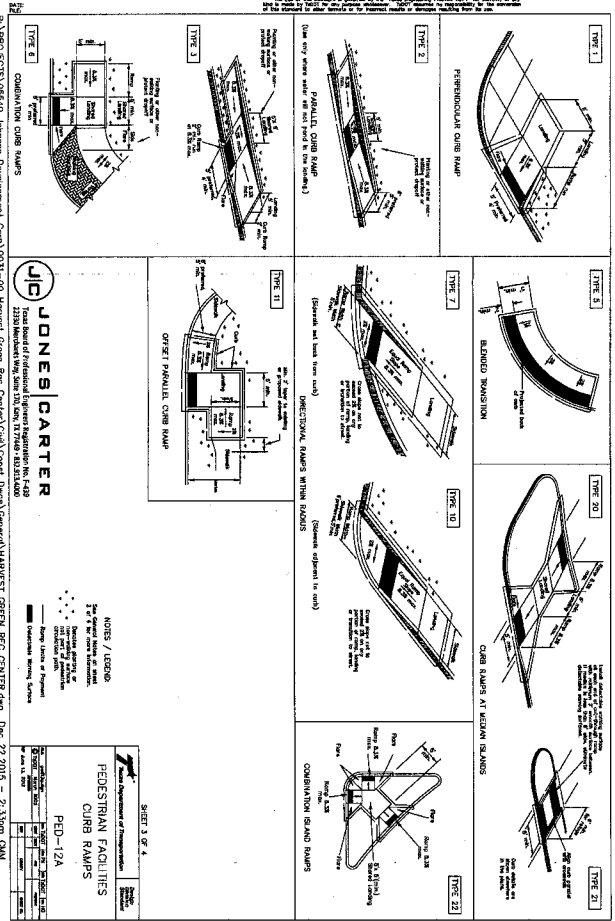
**EXCELLENCE  
 FORT BEND COUNTY TEXAS**

**HARVEST GREEN RECREATION CENTER  
 STORM WATER POLLUTION  
 PREVENTION PLAN DETAILS**

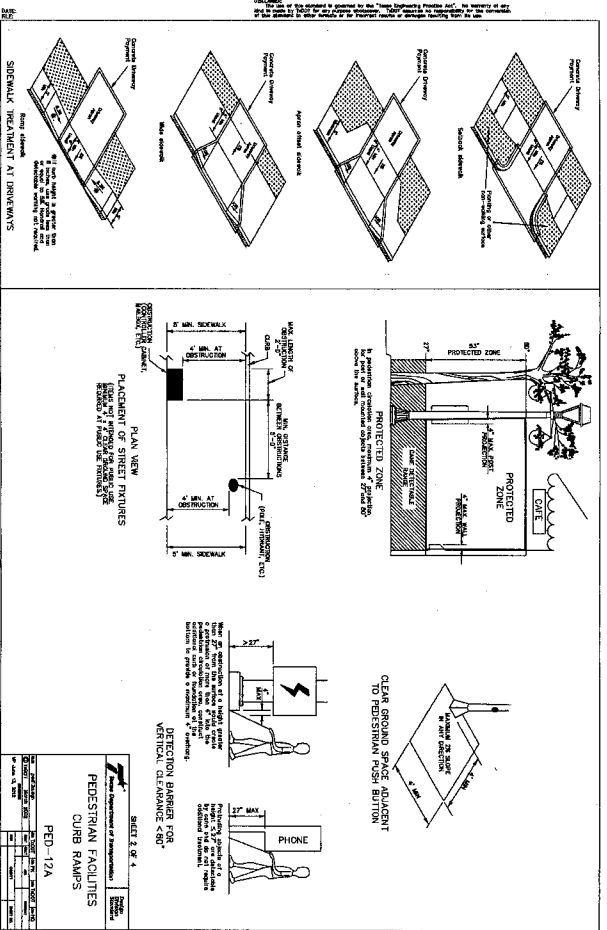
DATE: 6/27/01  
 SCALE: 1/4" = 1'-0"



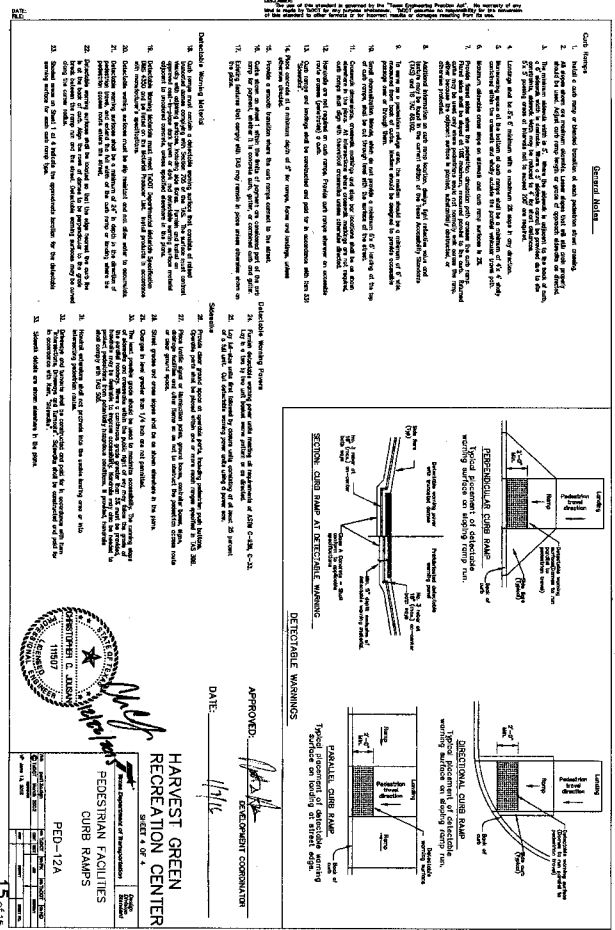
SHEET 1 OF 4  
 Jones Department of Transportation  
 PEDESTRIAN FACILITIES  
 CURB RAMPS  
 PED-12A



SHEET 2 OF 4  
 Jones Department of Transportation  
 PEDESTRIAN FACILITIES  
 CURB RAMPS  
 PED-12A



SHEET 3 OF 4  
 Jones Department of Transportation  
 PEDESTRIAN FACILITIES  
 CURB RAMPS  
 PED-12A



HARVEST GREEN  
 RECREATION CENTER  
 PEDESTRIAN FACILITIES  
 CURB RAMPS  
 PED-12A

APPROVED: [Signature]  
 DATE: 1/1/16



PERFORMANCE BOND COVERING ALL CABLE, CONDUIT AND/OR POLE LINE  
ACTIVITY IN, UNDER, ACROSS OR ALONG FORT BEND COUNTY ROAD

AUTHORIZED

BOND NO. 106404934

THE STATE OF TEXAS

§

KNOW ALL MEN BY THESE PRESENTS:

COUNTY OF FORT BEND

§

THAT WE, Millis Equipment Rental, LLC whose address is 931 Pheasant Valley Dr., Suite 200, Missouri City, Texas 77489 Texas, hereinafter called the Principal, And Travelers Casualty and Surety Company of America, a Corporation existing under and by virtue of the laws of the state of Connecticut and authorized to do an indemnifying business in the state of Texas, and whose principal office is located at One Tower Square, Hartford, Connecticut 06183, whose officer residing in the State of Texas, authorized to accept service in all suits and actions brought whining said state is Texas and Whose address is 1301 E. Collins Blvd., Suite 111C, Richardson, Tx 75081, hereinafter called the Surety, and held and firmly bound unto, Robert e. Hebert, County Judge of Fort Bend County, Texas, or his successors in office, in the full sum of Five Thousand Dollars & No/100's Dollars (\$ 5,000.00 ) current, lawful money of the United States of America, to be paid to said Robert E. Hebert, County Judge of Fort Bend County, Texas, or his successors in office, to which payment well and truly to be made and done, we, the undersigned, bind ourselves and each of us, our heirs, executors, administrators, successors, assigns, and legal representatives, jointly and severally, by these presents.

THE CONDITION OF THIS BOND IS SUCH THAT, WHEREAS, the above bounden principal contemplates laying, constructing, maintaining and/or repairing one or more cables, conduits, and/or pole lines in, under, across and/or along roads, streets and highways, commercial driveway and median openings or modifications in the County of Fort Bend, and the State of Texas, under the jurisdiction of the Commissioners' Court of Fort Bend County, Texas, pursuant to the Commissioners' Court order adopted on the 1st day of December, A.D. 1980, recorded in Volume 13, of the Commissioners' Court Minutes of Fort Bend County, Texas, regulating same, which Commissioners' Court order is hereby referred to and made a part hereof for all purposes as though fully set out herein;

AND WHEREAS, the principal desires to provide Fort Bend County with a performance bond covering all such cable, conduit and/or pole line activity, commercial driveway and median openings or modifications;

NOW, THEREFORE, if the above bounden principal shall faithfully perform all its cable, conduit and/or pole line activity (including, but not limited to the laying, construction, maintenance and/or repair of cables, conduits and/or pole lines) in, under, across and/or along roads, streets and highways, commercial driveway and median openings or modifications in the County of Fort Bend and State of Texas, under the jurisdiction of the Commissioners Court of Fort Bend County, Texas, pursuant to and in accordance with minimum requirements and conditions of the above mentioned Commissioners' Court order set forth and specified to be by said principal done and performed, at the time and in the manner therein specified, and shall pay over and make good and reimburse Fort Bend County, all loss and damages which Fort Bend County may sustain by reason of any failure or default on the part of said principal, then this obligation shall be null and void, otherwise to remain in full force and effect.

This bond is payable at the County Courthouse in the County of Fort Bend and State of Texas.

It is understood that at any time Fort Bend County deems itself insecure under this bond, it may require further and/or additional bonds of the principal.

EXECUTED this 8th day of January, 2016.

Millis Equipment Rental, LLC

PRINCIPAL

BY

Travelers Casualty and Surety Company of America

SURETY

BY Roxanne G. Hebert, Attorney-in-Fact



POWER OF ATTORNEY

Farmington Casualty Company
Fidelity and Guaranty Insurance Company
Fidelity and Guaranty Insurance Underwriters, Inc.
St. Paul Fire and Marine Insurance Company
St. Paul Guardian Insurance Company

St. Paul Mercury Insurance Company
Travelers Casualty and Surety Company
Travelers Casualty and Surety Company of America
United States Fidelity and Guaranty Company

Attorney-In Fact No. 230155

Certificate No. 006596778

KNOW ALL MEN BY THESE PRESENTS: That Farmington Casualty Company, St. Paul Fire and Marine Insurance Company, St. Paul Guardian Insurance Company, St. Paul Mercury Insurance Company, Travelers Casualty and Surety Company, Travelers Casualty and Surety Company of America, and United States Fidelity and Guaranty Company are corporations duly organized under the laws of the State of Connecticut, that Fidelity and Guaranty Insurance Company is a corporation duly organized under the laws of the State of Iowa, and that Fidelity and Guaranty Insurance Underwriters, Inc., is a corporation duly organized under the laws of the State of Wisconsin (herein collectively called the "Companies"), and that the Companies do hereby make, constitute and appoint

Kurt A. Risk, Sue Kohler, Sharon Cavanaugh, Misty D. Amaya, Francine Hay, David R. Groppe, Sharen R. Groppe, Roxanne G. Hebert, and Beverly A. Ireland

of the City of Houston, State of Texas, their true and lawful Attorney(s)-in-Fact, each in their separate capacity if more than one is named above, to sign, execute, seal and acknowledge any and all bonds, recognizances, conditional undertakings and other writings obligatory in the nature thereof on behalf of the Companies in their business of guaranteeing the fidelity of persons, guaranteeing the performance of contracts and executing or guaranteeing bonds and undertakings required or permitted in any actions or proceedings allowed by law.

IN WITNESS WHEREOF, the Companies have caused this instrument to be signed and their corporate seals to be hereto affixed, this 12th day of November, 2015.

Farmington Casualty Company
Fidelity and Guaranty Insurance Company
Fidelity and Guaranty Insurance Underwriters, Inc.
St. Paul Fire and Marine Insurance Company
St. Paul Guardian Insurance Company

St. Paul Mercury Insurance Company
Travelers Casualty and Surety Company
Travelers Casualty and Surety Company of America
United States Fidelity and Guaranty Company



State of Connecticut
City of Hartford ss.

By: [Signature]
Robert L. Raney, Senior Vice President

On this 12th day of November, 2015, before me personally appeared Robert L. Raney, who acknowledged himself to be the Senior Vice President of Farmington Casualty Company, Fidelity and Guaranty Insurance Company, Fidelity and Guaranty Insurance Underwriters, Inc., St. Paul Fire and Marine Insurance Company, St. Paul Guardian Insurance Company, St. Paul Mercury Insurance Company, Travelers Casualty and Surety Company, Travelers Casualty and Surety Company of America, and United States Fidelity and Guaranty Company, and that he, as such, being authorized so to do, executed the foregoing instrument for the purposes therein contained by signing on behalf of the corporations by himself as a duly authorized officer.

In Witness Whereof, I hereunto set my hand and official seal.
My Commission expires the 30th day of June, 2016.



[Signature: Marie C. Tetreault]
Marie C. Tetreault, Notary Public

This Power of Attorney is granted under and by the authority of the following resolutions adopted by the Boards of Directors of Farmington Casualty Company, Fidelity and Guaranty Insurance Company, Fidelity and Guaranty Insurance Underwriters, Inc., St. Paul Fire and Marine Insurance Company, St. Paul Guardian Insurance Company, St. Paul Mercury Insurance Company, Travelers Casualty and Surety Company, Travelers Casualty and Surety Company of America, and United States Fidelity and Guaranty Company, which resolutions are now in full force and effect, reading as follows:

**RESOLVED**, that the Chairman, the President, any Vice Chairman, any Executive Vice President, any Senior Vice President, any Vice President, any Second Vice President, the Treasurer, any Assistant Treasurer, the Corporate Secretary or any Assistant Secretary may appoint Attorneys-in-Fact and Agents to act for and on behalf of the Company and may give such appointee such authority as his or her certificate of authority may prescribe to sign with the Company's name and seal with the Company's seal bonds, recognizances, contracts of indemnity, and other writings obligatory in the nature of a bond, recognizance, or conditional undertaking, and any of said officers or the Board of Directors at any time may remove any such appointee and revoke the power given him or her; and it is

**FURTHER RESOLVED**, that the Chairman, the President, any Vice Chairman, any Executive Vice President, any Senior Vice President or any Vice President may delegate all or any part of the foregoing authority to one or more officers or employees of this Company, provided that each such delegation is in writing and a copy thereof is filed in the office of the Secretary; and it is

**FURTHER RESOLVED**, that any bond, recognizance, contract of indemnity, or writing obligatory in the nature of a bond, recognizance, or conditional undertaking shall be valid and binding upon the Company when (a) signed by the President, any Vice Chairman, any Executive Vice President, any Senior Vice President or any Vice President, any Second Vice President, the Treasurer, any Assistant Treasurer, the Corporate Secretary or any Assistant Secretary and duly attested and sealed with the Company's seal by a Secretary or Assistant Secretary; or (b) duly executed (under seal, if required) by one or more Attorneys-in-Fact and Agents pursuant to the power prescribed in his or her certificate or their certificates of authority or by one or more Company officers pursuant to a written delegation of authority; and it is

**FURTHER RESOLVED**, that the signature of each of the following officers: President, any Executive Vice President, any Senior Vice President, any Vice President, any Assistant Vice President, any Secretary, any Assistant Secretary, and the seal of the Company may be affixed by facsimile to any Power of Attorney or to any certificate relating thereto appointing Resident Vice Presidents, Resident Assistant Secretaries or Attorneys-in-Fact for purposes only of executing and attesting bonds and undertakings and other writings obligatory in the nature thereof, and any such Power of Attorney or certificate bearing such facsimile signature or facsimile seal shall be valid and binding upon the Company and any such power so executed and certified by such facsimile signature and facsimile seal shall be valid and binding on the Company in the future with respect to any bond or understanding to which it is attached.

I, Kevin E. Hughes, the undersigned, Assistant Secretary, of Farmington Casualty Company, Fidelity and Guaranty Insurance Company, Fidelity and Guaranty Insurance Underwriters, Inc., St. Paul Fire and Marine Insurance Company, St. Paul Guardian Insurance Company, St. Paul Mercury Insurance Company, Travelers Casualty and Surety Company, Travelers Casualty and Surety Company of America, and United States Fidelity and Guaranty Company do hereby certify that the above and foregoing is a true and correct copy of the Power of Attorney executed by said Companies, which is in full force and effect and has not been revoked.

IN TESTIMONY WHEREOF, I have hereunto set my hand and affixed the seals of said Companies this 8th day of January, 20 16

WARNING: THIS POWER OF ATTORNEY IS INVALID WITHOUT THE RED BORDER

Kevin E. Hughes  
Kevin E. Hughes, Assistant Secretary



To verify the authenticity of this Power of Attorney, call 1-800-421-3880 or contact us at www.travelersbond.com. Please refer to the Attorney-In-Fact number, the above-named individuals and the details of the bond to which the power is attached.



## IMPORTANT NOTICE

### TO OBTAIN INFORMATION OR MAKE A COMPLAINT:

You may contact Travelers Casualty & Surety Company of America, Travelers Casualty & Surety Company, Travelers Indemnity Company, Standard Fire Insurance Company and/or Farmington Casualty Company for information or to make a complaint at:

Travelers Bond  
Attn: Claims  
1500 Market Street  
West Tower, Suite 2900  
Philadelphia, PA 19102

(267) 675-3130  
(267) 675-3102 Fax

You may contact the Texas Department of Insurance to obtain the information on companies, coverages, rights or complaints at:

Texas Department of Insurance  
P.O. Box 149104  
Austin, TX 78714-9104

(800) 252-3439

ATTACH THIS NOTICE TO YOUR BOND. This notice is for information only and does not become a part or a condition of the attached document and is given to comply with Section 2253-021, Government Code, and Section 53.202, Property Code, effective September 1, 2001.