

REVIEW BY FORT BEND COUNTY COMMISSIONERS COURT

On this 5th day of January, 2016, Commissioners Court came on to be heard and reviewed the accompanying notice of Jier LLC / Comcast of Houston, LLC
Job Location 23910 Westheimer Pkwy, Katy, TX 77494
Date 12/8/2015 Bond No. 104865058, Permit No. 2015-4525 to make use of certain Fort Bend County property subject to, "A Revised Order Regulating the Laying, Construction, Maintenance, and Repair of Buried Cables, Conduits, and Pole Lines, In, Under, Across or Along Roads, Streets, Highways, and Drainage Ditches in Fort Bend County, Texas, Under the Jurisdiction of the Commissioners Court of Fort Bend County, Texas," as passed by the Commissioners Court of Fort Bend County, Texas the 3rd day of August, 1987, recorded in Volume _____ of the Minutes of the Commissioners Court of Fort Bend County, Texas, to the extent that such order is not inconsistent with Article 1436a, Vernon's Texas Civil Statutes. Upon Motion of Commissioner Mousch, seconded by Commissioner Patterson, duly put and carried, it is ORDERED, ADJUDGED AND DECREED that said notice of said above purpose is hereby acknowledged by the Commissioners Court of Fort Bend County, Texas, and that said notice be placed on record according to the regulation order thereof.

Notes:

1. Evidence of review by the Commissioners Court must be kept on the job site and failure to do so constitutes grounds for job shutdown.
2. Written notices are required:
 - a. 48 hours in advance of construction start up, and
 - b. when construction is completed and ready for final inspection
 Mail notices to: Permit Administrator
 Fort Bend County Engineering
 301 Jackson Street
 Richmond, Texas 77469
 281-633-7500
3. This permit expires one (1) year from date of permit if construction has not commenced.

By: Paul J. Stangle, PE, PTOE
for County Engineer

Presented to Commissioners Court and approved.
Recorded in Volume 1-05-16
Minutes of Commissioners Court

By: N/A
Drainage District Engineer/Manager

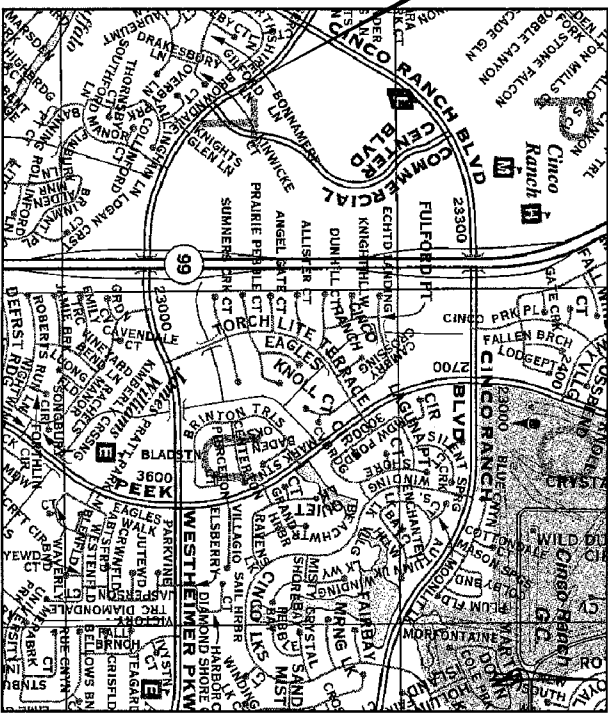
Clerk of Commissioners Court
By: Aminda Willis
Deputy

1	SHEET INDEX
2	COVER SHEET
3	PLAN AND SECTION SHEET
	TRAFFIC CONTROL PLAN



PROPOSED CONDUIT ALIGNMENT ACROSS WESTHEIMER PARKWAY
 NORTHWEST OF COMMERCIAL CENTER BLVD FOR APPROX. 99 FEET.

PROJECT
 LOCATION



VICINITY MAP
 KEY MAP NO. 485-1



Comcast
 7033 AIRPORT BLVD.
 HOUSTON, TX 77061-3912

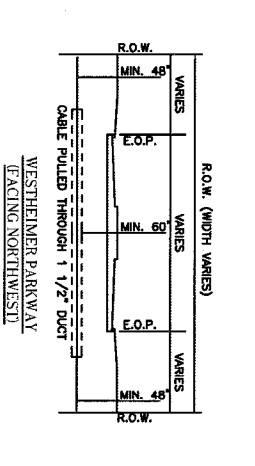
COMCAST SHALL INSTALL A 1-1/2" CONDUIT ACROSS WESTHEIMER PARKWAY, APPROXIMATELY 625' NORTHWEST OF CL COMMERCIAL CENTER BLVD FOR A DISTANCE OF 99 LF.

JT-15604-CIN - WESTHEIMER PARKWAY

DESIGNED BY: JER, LLC
 DRAWN BY: MKK
 DWG. NO.:
 SHEET NO. 2 OF 3

LAUBERT: 44863
 DATE: 12/05/2015
 KEY MAP NO. 445-1
 SCALE: NTS

- NOTES :**
1. THE CONTRACTOR SHALL CONTACT TEXAS ONE CALL SYSTEM AT 1-800-245-4545 MIN. 48 HOURS BEFORE DIGGING.
 2. THE CONTRACTOR SHALL DETERMINE THE EXACT LOCATION OF ALL UNDERGROUND FACILITIES BEFORE COMMENCING WORK AND ARE TO BE FULLY RESPONSIBLE FOR ALL DAMAGES CAUSED BY HIS FAILURE TO EXACTLY LOCATE AND PRESERVE ALL UNDERGROUND FACILITIES.
 3. NO MORE TRENCH OPENED AT ONE TIME THAN CAN BE BACKFILLED AND COMPACTED IN 10" LIFTS AT THE END OF EACH DAY. (NO TRENCH LEFT OPENED OVERNIGHT)
 4. ALL EXCESS EXCAVATION TO BE REMOVED FROM THE ROAD RIGHT-OF-WAY AT THE END OF EACH DAY.
 5. DITCHES TO BE OPENED AT THE END OF EACH DAY TO ASSURE ADEQUATE DRAINAGE.
 6. ROAD MUST BE KEPT OPEN TO TRAFFIC AND CONTRACTOR MUST PROVIDE ADEQUATE FLAGMEN, SIGNALS, ETC., TO PROVIDE COMPLETE SAFETY TO THE PUBLIC.
 7. IF IT BECOMES NECESSARY FOR EQUIPMENT TO OPERATE ON A PORTION OF THE PAVEMENT, PRECAUTIONS MUST BE TAKEN TO PREVENT ANY DAMAGE WHATSOEVER TO THE PAVEMENT.
 8. CONDITION OF ROAD UPON COMPLETION OF JOB SHALL BE AS GOOD OR BETTER THAN PRIOR TO STARTING.
 9. CONTRACTOR SHALL COMPLY WITH ALL APPLICABLE NATIONAL, ELECTRICAL SAFETY CODE (NEC) REQUIREMENTS, CENTERPOINT ENERGY ELECTRIC POLE ATTACHMENT GUIDELINES & PROCEDURES AND ALL APPLICABLE LOCAL REQUIREMENTS AND REGULATIONS FOR PLACEMENT OF AERIAL CABLE FACILITIES. 18" MIN. VERTICAL CLEARANCE

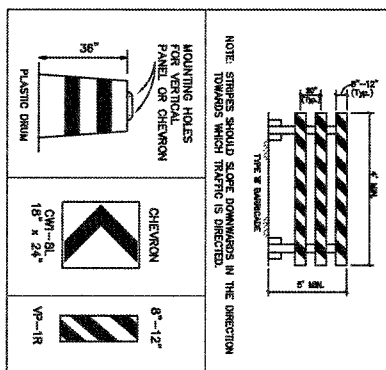
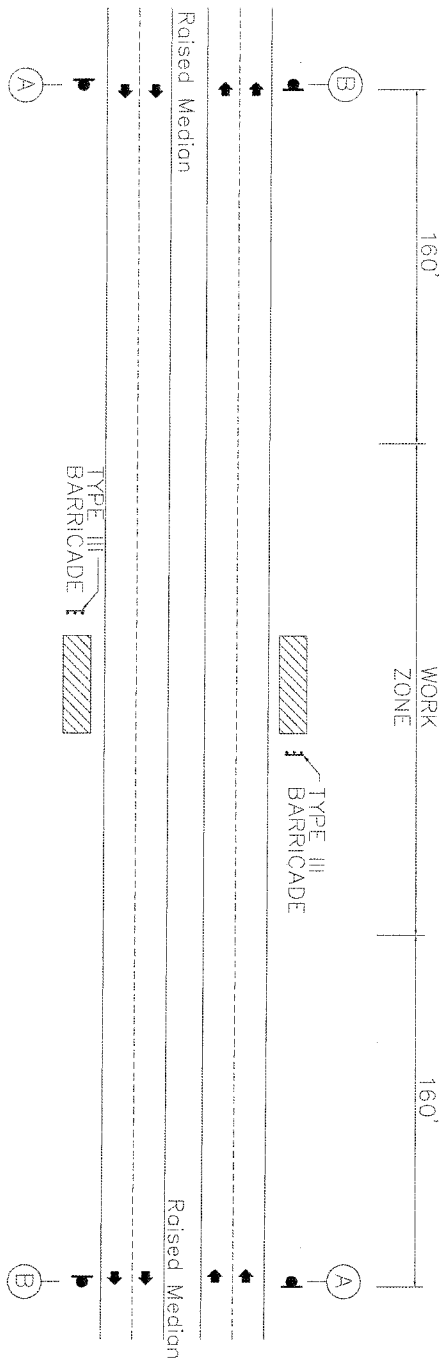


PROJECT BEGINS HERE
 625' ± NORTHWEST OF
 CL COMMERCIAL CENTER

PROJECT ENDS HERE
 (PLUG 1 1/2" DUCT)

PROP 1 1/2" DUCT ~ 99'
 (DIRECTIONAL DRILL)

1104



- SPECIAL TRAFFIC REQUIREMENTS**
1. Contractor shall provide and install traffic control devices in conformance with part V of the Texas Manual on Uniform Traffic Control Devices (Texas MUTCD), most recent edition with revisions.
 2. No lanes shall be closed during the hours of 7:00 AM to 8:00 AM and 4:00 PM to 6:30 PM Monday thru Friday.
 3. An off-duty Uniformed Police Officer is required to direct traffic when lanes are closed.
 4. Contractor shall cover open government excavations with approved steel plates during non-working hours. A minimum 36" x 36" steel plate shall be used. The plate shall be secured to the ground with 3/4" x 36" diameter or approved equal with steeling and steel spacers to prevent float to obstruction during non-working hours.
 5. Approved copies of Traffic Control Plans and lane closure permits shall be available for inspection at job site at all times.
 6. If the contractor chooses to use a different method of "Traffic Control Plans" during the construction, they shall be responsible to prepare and submit an alternate set of plans to Harris County Traffic Section for approval. Ten working days prior to implementation.
 7. These plans shall be drawn to scale on reproducible mylar and sealed by a Licensed Engineer in Harris County. The plans shall be stamped with the Harris County Engineer's seal and signature.
 8. If the project is within 400 feet from a residential or commercial area, the contractor shall contact Harris County public infrastructure department, signal division, at 713-891-3210 (twice) working days prior to the start of construction.

Key Map #485-T

- LEGEND**
- PLASTIC DRUM (see spacing for standardizing devices)
 - ▼ OFF-DUTY UNIFORMED POLICE OFFICER
 - ▬ TYPE III BARRICADE
 - ▬ FLASHING ARROW PANEL

Jier, LLC

PROFESSIONAL ENGINEER
 DOUG KAUFMAN
 LICENSE NO. 85493
 STATE OF TEXAS

Doug Kaufman 12/05/15

TRAFFIC CONTROL PLAN
 WESTHEIMER PARKWAY
 (TYPICAL)

SHEET NO. 3 OF 3 SCALE: N.T.S.