

REVIEW BY FORT BEND COUNTY COMMISSIONERS COURT

On this 5th day of January, 2016, Commissioners Court came on to be heard and reviewed the accompanying notice of JR2 Energy Services, Inc. / Center Point Energy Houston Electric, LLC Job Location 4007 BEASLEY WEST END RD, BEASLEY, TX 77417 Date 12/8/2015 Bond No. 22001420, Permit No. 2015-4543 to make use of certain Fort Bend County property subject to, "A Revised Order Regulating the Laying, Construction, Maintenance, and Repair of Buried Cables, Conduits, and Pole Lines, In, Under, Across or Along Roads, Streets, Highways, and Drainage Ditches in Fort Bend County, Texas, Under the Jurisdiction of the Commissioners Court of Fort Bend County, Texas," as passed by the Commissioners Court of Fort Bend County, Texas the 3rd day of August, 1987, recorded in Volume _____ of the Minutes of the Commissioners Court of Fort Bend County, Texas, to the extent that such order is not inconsistent with Article 1436a, Vernon's Texas Civil Statutes. Upon Motion of Commissioner Monson, seconded by Commissioner Patterson, duly put and carried, it is ORDERED, ADJUDGED AND DECREED that said notice of said above purpose is hereby acknowledged by the Commissioners Court of Fort Bend County, Texas, and that said notice be placed on record according to the regulation order thereof.

Notes:

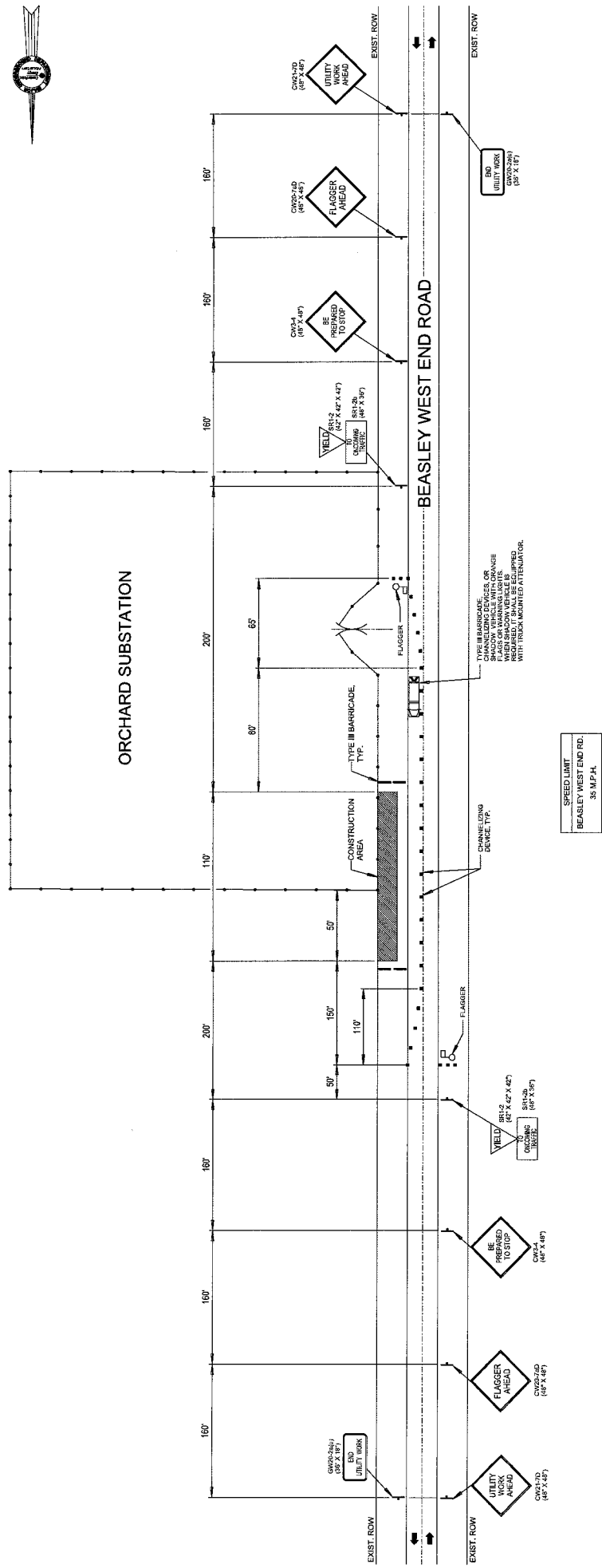
1. Evidence of review by the Commissioners Court must be kept on the job site and failure to do so constitutes grounds for job shutdown.
2. Written notices are required:
 - a. 48 hours in advance of construction start up, and
 - b. when construction is completed and ready for final inspection
 Mail notices to: Permit Administrator
 Fort Bend County Engineering
 301 Jackson Street
 Richmond, Texas 77469
 281-633-7500
3. This permit expires one (1) year from date of permit if construction has not commenced.

By: Rick J Stargel, PE, PTOE
for County Engineer

Presented to Commissioners Court and approved.
Recorded in Volume 1-05-16
Minutes of Commissioners Court

By: N/A
Drainage District Engineer/Manager

Clerk of Commissioners Court
By: Quanda Wilkins
Deputy



TRAFFIC CONTROL PLAN

TRAFFIC CONTROL GENERAL NOTES:

- CONTRACTOR SHALL PROVIDE AND INSTALL TRAFFIC CONTROL DEVICES IN CONFORMANCE WITH PART VI OF THE TEXAS MANUAL ON UNIFORM TRAFFIC CONTROL DEVICES, (TEXAS MUTCD, MOST RECENT EDITION AS REVISED) DURING CONSTRUCTION.
- CONTRACTOR TO NOTIFY THE "UNDERGROUND UTILITY COORDINATING COMMITTEE" (1-800-868-8344) 48 HOURS BEFORE STARTING WORK.
- IF THE CONTRACTOR CHOOSES TO USE A DIFFERENT METHOD OF TRAFFIC CONTROL THAN THAT OUTLINED IN CONTRACT DRAWINGS, THE CONTRACTOR SHALL BE RESPONSIBLE TO PREPARE AND SUBMIT AN ALTERNATE SET OF PLANS TO PLAN REVIEW SECTION FOR APPROVAL TEN WORKING DAYS PRIOR TO IMPLEMENTATION. THESE PLANS SHALL BE DRAWN TO SCALE ON REPRODUCIBLE MYLAR AND SEALED BY A REGISTERED PROFESSIONAL ENGINEER. THESE PLANS WILL BECOME A PART OF THE CONTRACT DRAWINGS.
- THE TRAFFIC CONTROL SIGNS, DEVICES, AND BARRICADES SHOWN ON THESE DRAWINGS CONSTITUTE MINIMUM REQUIREMENTS AND ARE NOT TO BE DELETED OR OMITTED DURING NON-WORKING HOURS AND OPEN TIMES FOR NORMAL TRAFFIC FLOW. THE CONTRACTOR SHALL PROVIDE ADDITIONAL SIGNS, BARRICADES, AND WARNING DEVICES TO WARN THE PUBLIC, PROVIDE FOR THE SAFE MOVEMENT OF TRAFFIC, AND PROVIDE FOR THE SAFETY OF THE CONSTRUCTION AREA WHERE FIELD REQUIREMENTS ARE NOT FULLY SATISFIED AS SHOWN HEREON.
- NO WORK SHALL BE PERFORMED IN THE TRAVEL WAY INCLUDING LOADING AND UNLOADING OF TRUCKS.
- WHERE APPLICABLE, THE CONTRACTOR SHALL MAINTAIN ALL EXISTING STOP SIGNS, STREET LIGHTS, SIGNING SIGNS, AND MOVEMENT MARKERS IN PLACE, AND PROPER OPERATION OF TRAFFIC SIGNALS.
- THE CONTRACTOR SHALL PROVIDE AND MAINTAIN BARRICADES AND/OR DEVICES, AS REQUIRED TO PROTECT PEDESTRIANS WITHIN THE PROJECT AREA.
- THE CONTRACTOR SHALL MAINTAIN SAFE ACCESS (INGRESS AND EGRESS) TO ADJOINING PROPERTIES AT ALL TIMES.
- CONTRACTOR SHALL INSURE THAT ALL BARRICADES, SIGNS, DEVICES, AND CHANNELING DEVICES ARE MAINTAINED IN A CLEAR FUNCTIONAL CONDITION AT ALL TIMES.
- CONTRACTOR SHALL COVER OPEN EXCAVATIONS WITH STEEL PLATES AND COVER OPEN EXCAVATIONS DURING NON-WORKING HOURS AND OPEN LANE FOR NORMAL TRAFFIC FLOW.
- ALL TRAVEL LANES SHALL BE MINIMUM OF 10' WIDE.
- CONTRACTOR SHALL MAINTAIN ONE LANE OF TRAFFIC IN EACH DIRECTION DURING WORKING HOURS AND MAINTAIN TRAFFIC LANES ACCORDING TO TRAFFIC CONTROL PLANS DURING WORKING HOURS.
- IN THE EVENT WHEN NO TRAFFIC CONTROL PLANS EXIST AS A PART OF CONTRACT DRAWINGS, CONTRACTOR SHALL PREPARE AND SUBMIT TO PLAN REVIEW SECTION FOR APPROVAL TEN WORKING DAYS PRIOR TO IMPLEMENTATION.
- THE PLANS SHALL BE DRAWN TO SCALE ON REPRODUCIBLE MYLAR AND SEALED BY A REGISTERED PROFESSIONAL ENGINEER. THESE PLANS WILL BECOME A PART OF THE CONTRACT DRAWINGS.
- APPROVED COPIES OF TRAFFIC CONTROL PLANS AND LANE/SIDEWALK CLOSURE PERMITS SHALL BE AVAILABLE FOR INSPECTION AT JOB SITE AT ALL TIMES.

	7322 SW Freeway Houston, Tx. #7074 713.559.0150
	Texas Registration Number F-16451
MAJOR ACCOUNTS GROUP ENGINEERING TRAFFIC CONTROL PLAN ORCHARD SUBSTATION 4007 BEASLEY WEST END ROAD BEASLEY, TEXAS	
DRAWN BY: VJF/AJW/ML APPROVED:	SCALE: NOT TO SCALE SHEET NO. 3 OF 3 DATE:
61780003	