

REVIEW BY FORT BEND COUNTY COMMISSIONERS COURT

On this 13th day of October, 2015, Commissioners Court came on to be heard and reviewed the accompanying notice of Wier Enterprises

Job Location Willow Fork Bayou at 29029 Katy Frwy, Katy, TX 77494

Date Bond No. 42677, Permit No. 2015-2961 to make use of certain Fort Bend County property subject to, "A Revised Order Regulating the Laying, Construction, Maintenance, and Repair of Buried Cables, Conduits, and Pole Lines, In, Under, Across or Along Roads, Streets, Highways, and Drainage Ditches in Fort Bend County, Texas, Under the Jurisdiction of the Commissioners Court of Fort Bend County, Texas," as passed by the Commissioners Court of Fort Bend County, Texas the 3rd day of August, 1987, recorded in Volume _____ of the Minutes of the Commissioners Court of Fort Bend County, Texas, to the extent that such order is not inconsistent with Article 1436a, Vernon's Texas Civil Statutes. Upon Motion of Commissioner

Meyers, seconded by Commissioner Patterson, duly put and carried, it is ORDERED, ADJUDGED AND DECREED that said notice of said above purpose is hereby acknowledged by the Commissioners Court of Fort Bend County, Texas, and that said notice be placed on record according to the regulation order thereof.

Notes:

1. Evidence of review by the Commissioners Court must be kept on the job site and failure to do so constitutes grounds for job shutdown.
2. Written notices are required:
 - a. 48 hours in advance of construction start up, and
 - b. when construction is completed and ready for final inspection
 Mail notices to: Permit Administrator
 Fort Bend County Engineering
 301 Jackson Street
 Richmond, Texas 77469
 281-633-7500
3. This permit expires one (1) year from date of permit if construction has not commenced.

By: [Signature]
County Engineer

Presented to Commissioners Court and approved.
Recorded in Volume 10-13-15
Minutes of Commissioners Court

By: [Signature]
Drainage District Engineer/Manager

Clerk of Commissioners Court
By: [Signature]
Deputy



AlliganceBank
T E X A S

P.O. BOX 41314
Houston, TX 77241-1314

THIS DOCUMENT HAS A MICRO-PRINT SIGNATURE LINE, ARTIFICIAL WATERMARK, AND A SECURITY SCREEN. ABSENCE OF THESE FEATURES WILL INDICATE A COPY

CASHIERS CHECK

42677

Date: 09/09/15

35-2572/1130

Five Thousand and 00/100*****

Pay to the **FORT BEND COUNTY DRAINAGE DIST.**
Order of

\$ *****5,000.00

TWO SIGNATURES REQUIRED OVER \$10,000

[Handwritten Signature]

President

WIER ENTERPRISES
Remiter

[REDACTED]



Security Features
Printed on Cash

DATE: 10-14-15

	CURRENCY	DOLLARS	CENTS
COINS			
TOTAL CASH			
CHECKS			
1 Cashiers Check 0000			
2 4 9617			
3			
4 Wier Enterprises			
5			
6			
7			
8 Permit			
9 2015-2914			
10			
11			
12 CUM 10-13-15			
13 # 135			
14			
15			
16			
17			
18			
19			
20			
21			
22			
23			
24			
25			
26			
27			
28			
TOTAL FROM OTHER SIDE OF ATTACHED LIST			
PLEASE PRINT TOTAL		5000	

FORT BEND COUNTY CLERK
REGISTRY FUND
301 JACKSON
RICHMOND, TX 77469

PROSPERITY BANK
SUGAR LAND BANKING CENTER
14869 SOUTHWEST FREEWAY • SUGAR LAND, TX 77478
281-209-7200

RE-ENTER GRAND TOTAL IN SCREENED BOXES

\$ 5,000.00

DEPOSIT TICKET
88-2205/1131-111
TOTAL ITEMS 1
DEPOSITS MAY NOT BE AVAILABLE FOR IMMEDIATE WITHDRAWAL.

PLEASE PRINT TOTAL

10/14/2015 2:40 PM
BR# 111 Tlr# 9 Seq# 64
Account [REDACTED]
DDA Deposit 5,000.00

Prosperity Bank

Willis, Linda

From: Client Services - TX <clientservices@texasclass.com>
Sent: Tuesday, October 13, 2015 4:57 PM
To: Willis, Linda
Cc: Client Services - TX
Subject: RE:

Good Afternoon Linda,

We setup the following new account-

TXCLASS Account #	TXCLASS Account Name
██████████	CCM2015-2961 Wier Enterprises

Have a great evening!

Regards,
Aaron



From: Willis, Linda [mailto:Linda.Willis@fortbendcountytexas.gov]
Sent: Tuesday, October 13, 2015 3:36 PM
To: Client Services - TX <clientservices@texasclass.com>
Subject:

Please add new account.

Thanks.

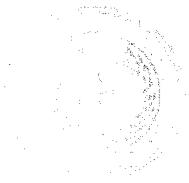


Linda Willis

Administrative Services Coordinator
Laura Richard
Fort Bend County Clerk
281-344-3952
281-341-8697(Fax)
301 Jackson Street
Richmond, TX 77469

DEPOSIT

PERMIT #	2015-2961
STYLE:	Wier Enterprises
NAME PUT INTO TEXAS CLASS AS:	Wier Enterprises
TEXAS CLASS ACCOUNT NUMBER	[REDACTED]
DEPOSIT AMOUNT:	\$5,000.00
DATE RECEIVED:	10/13/2015
DATE TRANSFERRED TO TEXAS CLASS:	10/20/2015



DRAINAGE DISTRICT

Fort Bend County, Texas

September 30, 2015

Mr. Osiel Perez
Texas Engineering & Mapping Co.
12810 Century Drive
Stafford, Texas 77477
Ph: (281) 491-2525
Fax: (281) 491-2535

Re: Ron Hoover RV & Marine
29029 Katy Freeway

Dear Mr. Perez:

The Fort Bend County Drainage District has received the above referenced construction plans for review and comment. The proposed project lies within the City of Katy city limits and the Drainage District review is limited to evaluating any impacts along our Willow Fork of Buffalo Bayou right-of-way.

The proposed project includes a detention pond outfall structure and extreme event overflow swale within the existing Willow Fork of Buffalo Bayou easement. Sheet C2.1 specifically notes that the contractor must contact Mr. Johnny Ortega with the Fort Bend County Engineering Department, at (281) 633-7500, to obtain a permit prior to any work with the Fort Bend County Drainage District right-of-way.

Subject to the permit being acquired and City of Katy approval, the Fort Bend County Drainage District interposes no objection to approval of the construction plans.

Please let me know if you have any questions.

Sincerely,

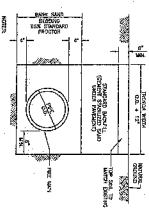
A handwritten signature in black ink, appearing to read "Neil J. Goertz".

Neil J. Goertz, P.E., CFM
Engineer I
Fort Bend County Drainage District

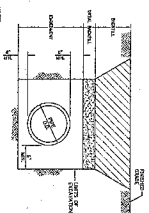
cc: Mr. Travis Huff – Fort Bend County Engineering Department

CONSTRUCTION NOTES:

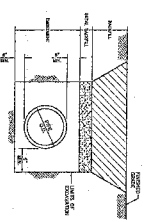
1. All work shall be done in accordance with the approved plans and specifications.
2. The contractor shall be responsible for obtaining all necessary permits and licenses.
3. The contractor shall be responsible for the safety of all workers and the public.
4. The contractor shall be responsible for the protection of all existing utilities.
5. The contractor shall be responsible for the disposal of all waste materials.
6. The contractor shall be responsible for the cleanup of all work areas.
7. The contractor shall be responsible for the maintenance of all equipment.
8. The contractor shall be responsible for the storage of all materials.
9. The contractor shall be responsible for the transportation of all materials.
10. The contractor shall be responsible for the unloading of all materials.
11. The contractor shall be responsible for the installation of all equipment.
12. The contractor shall be responsible for the testing of all equipment.
13. The contractor shall be responsible for the adjustment of all equipment.
14. The contractor shall be responsible for the operation of all equipment.
15. The contractor shall be responsible for the maintenance of all equipment.
16. The contractor shall be responsible for the repair of all equipment.
17. The contractor shall be responsible for the replacement of all parts.
18. The contractor shall be responsible for the removal of all equipment.
19. The contractor shall be responsible for the disposal of all equipment.
20. The contractor shall be responsible for the cleanup of all work areas.



**ELEC/WATER MAN
BEDDING AND BACKCELL**

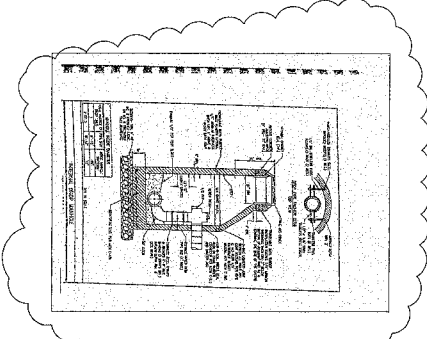
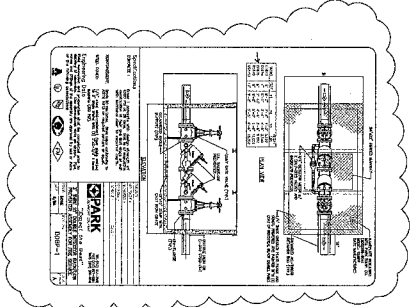
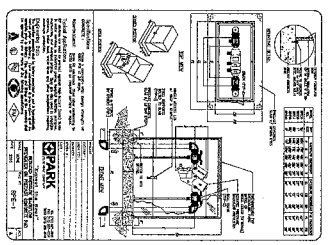
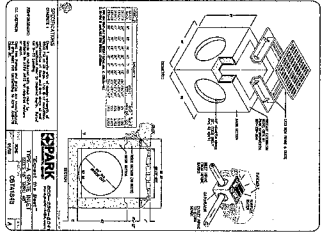
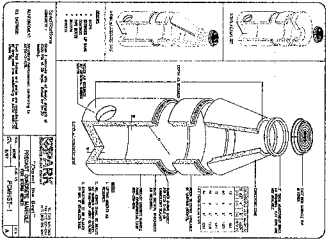
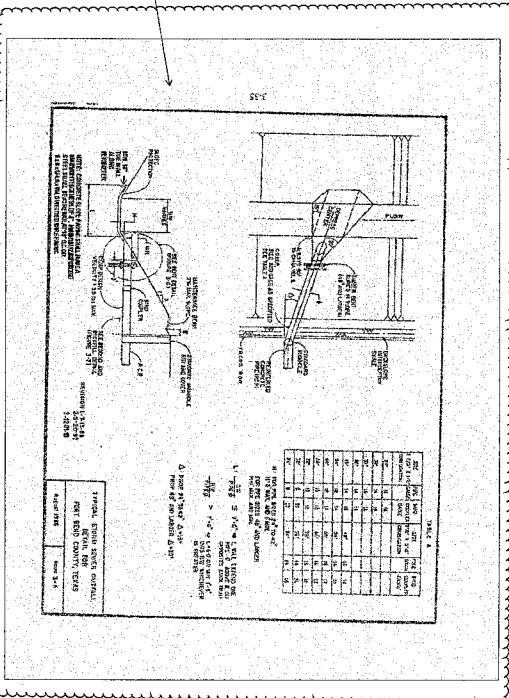


**SLOPE SEWER
BEDDING AND BACKCELL**



**CLASS 'MA'
SAMPER SEWER
BEDDING AND BACKCELL**

SEE PLAN FOR LOCATION OF THIS SEWER



DIAGONAL REINFORCEMENT

- C-7 NOTES & DETAILS**
1. See notes on sheet C-6.
 2. See notes on sheet C-8.
 3. See notes on sheet C-9.
 4. See notes on sheet C-10.
 5. See notes on sheet C-11.
 6. See notes on sheet C-12.
 7. See notes on sheet C-13.
 8. See notes on sheet C-14.
 9. See notes on sheet C-15.
 10. See notes on sheet C-16.
 11. See notes on sheet C-17.
 12. See notes on sheet C-18.
 13. See notes on sheet C-19.
 14. See notes on sheet C-20.
 15. See notes on sheet C-21.
 16. See notes on sheet C-22.
 17. See notes on sheet C-23.
 18. See notes on sheet C-24.
 19. See notes on sheet C-25.
 20. See notes on sheet C-26.
 21. See notes on sheet C-27.
 22. See notes on sheet C-28.
 23. See notes on sheet C-29.
 24. See notes on sheet C-30.
 25. See notes on sheet C-31.
 26. See notes on sheet C-32.
 27. See notes on sheet C-33.
 28. See notes on sheet C-34.
 29. See notes on sheet C-35.
 30. See notes on sheet C-36.
 31. See notes on sheet C-37.
 32. See notes on sheet C-38.
 33. See notes on sheet C-39.
 34. See notes on sheet C-40.
 35. See notes on sheet C-41.
 36. See notes on sheet C-42.
 37. See notes on sheet C-43.
 38. See notes on sheet C-44.
 39. See notes on sheet C-45.
 40. See notes on sheet C-46.
 41. See notes on sheet C-47.
 42. See notes on sheet C-48.
 43. See notes on sheet C-49.
 44. See notes on sheet C-50.
 45. See notes on sheet C-51.
 46. See notes on sheet C-52.
 47. See notes on sheet C-53.
 48. See notes on sheet C-54.
 49. See notes on sheet C-55.
 50. See notes on sheet C-56.
 51. See notes on sheet C-57.
 52. See notes on sheet C-58.
 53. See notes on sheet C-59.
 54. See notes on sheet C-60.
 55. See notes on sheet C-61.
 56. See notes on sheet C-62.
 57. See notes on sheet C-63.
 58. See notes on sheet C-64.
 59. See notes on sheet C-65.
 60. See notes on sheet C-66.
 61. See notes on sheet C-67.
 62. See notes on sheet C-68.
 63. See notes on sheet C-69.
 64. See notes on sheet C-70.
 65. See notes on sheet C-71.
 66. See notes on sheet C-72.
 67. See notes on sheet C-73.
 68. See notes on sheet C-74.
 69. See notes on sheet C-75.
 70. See notes on sheet C-76.
 71. See notes on sheet C-77.
 72. See notes on sheet C-78.
 73. See notes on sheet C-79.
 74. See notes on sheet C-80.
 75. See notes on sheet C-81.
 76. See notes on sheet C-82.
 77. See notes on sheet C-83.
 78. See notes on sheet C-84.
 79. See notes on sheet C-85.
 80. See notes on sheet C-86.
 81. See notes on sheet C-87.
 82. See notes on sheet C-88.
 83. See notes on sheet C-89.
 84. See notes on sheet C-90.
 85. See notes on sheet C-91.
 86. See notes on sheet C-92.
 87. See notes on sheet C-93.
 88. See notes on sheet C-94.
 89. See notes on sheet C-95.
 90. See notes on sheet C-96.
 91. See notes on sheet C-97.
 92. See notes on sheet C-98.
 93. See notes on sheet C-99.
 94. See notes on sheet C-100.

RON HOOVER RV & MARINE
LOCATED AT:
29029 KATY FREEWAY
KATY, TEXAS 77494

TEARD ROOMING & SERVICE CO.
1100 W. IRLAND AVENUE
DALLAS, TEXAS 75207
PHONE: 972-441-1111 FAX: 972-441-1112

TEARD ROOMING & SERVICE CO.
1100 W. IRLAND AVENUE
DALLAS, TEXAS 75207
PHONE: 972-441-1111 FAX: 972-441-1112

TEARD ROOMING & SERVICE CO.
1100 W. IRLAND AVENUE
DALLAS, TEXAS 75207
PHONE: 972-441-1111 FAX: 972-441-1112

C-7
NOTES & DETAILS

