

**PLAT RECORDING SHEET**

**PLAT NAME:** Grand Corner Reserves Partial Replat No. 6

**PLAT NO:** \_\_\_\_\_

**ACREAGE:** 2.410

**LEAGUE:** Joel E. McCrary Survey

**ABSTRACT NUMBER:** 403

**NUMBER OF BLOCKS:** 1

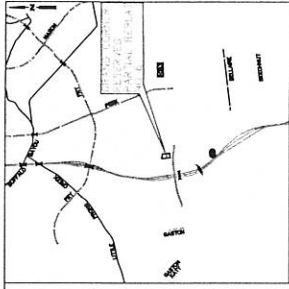
**NUMBER OF LOTS:** 0

**NUMBER OF RESERVES:** 1

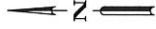
**OWNERS:** Mission Grand Corners Investors LP, a Texas Limited Partnership

\_\_\_\_\_  
(DEPUTY CLERK)





VICINITY MAP



DISTRICT NAMES  
 GRAND LAKES BLDG. NO. 4  
 FORT BEND DRAINAGE DISTRICT  
 MATT LEE, S.E.  
 ELECTRICITY  
 CENTURION ENERGY  
 FORT BEND DRAINAGE DISTRICT  
 WATER

# GRAND CORNER RESERVES PARTIAL REPEAT NO 6

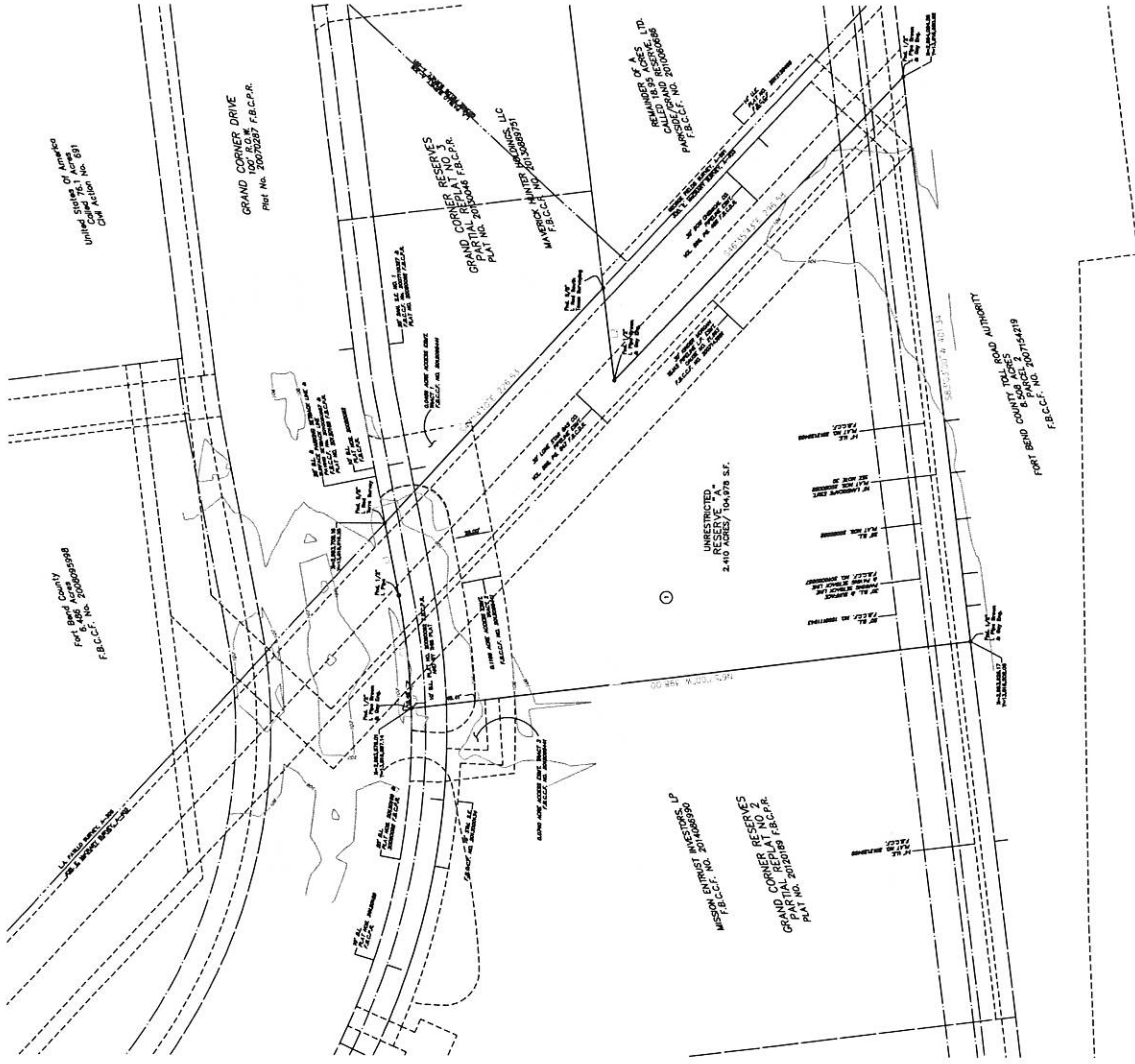
A SUBDIVISION OF 2,410 ACRES OF LAND  
 LOCATED IN THE  
 JOEL E. MCCRARY SURVEY, A-403  
 FORT BEND COUNTY, TEXAS  
 ALSO BEING A PARTIAL REPEAT OF  
 GRAND CORNER RESERVES RECORDED UNDER  
 GRAND CORNER RESERVE REPEAT NO. 20080092, F.B.C.P.R.

LOTS: 0 RESERVES: 1 BLOCKS: 1  
 SCALE: 1" = 40' DATE: JUNE, 2015

MISSION GRAND CORNER REPEATS, L.P.  
 1100 E. WINDYBROOK DRIVE  
 FORT WORTH, TEXAS 76102



Brown & Gray Engineers, Inc.  
 1100 E. WINDYBROOK DRIVE  
 FORT WORTH, TEXAS 76102  
 TEL: 817-338-8200  
 WWW.BROWNANDGRAY.COM  
 TABLE: Licensure Surveying Firm No. 010965-00



CURVE DATA  
 MATH: 1/2000  
 1/2000  
 1/2000

LINE DATA  
 1/2000  
 1/2000  
 1/2000

PL 003  
 VARIABLE WIDTH R.O.W.