

16F

**REVIEW BY FORT BEND COUNTY COMMISSIONERS COURT**

On this 28th day of July, 2015, Commissioners Court came on to be heard and reviewed the accompanying notice of Jier LLC on behalf of Comcast of Houston, LLC Job Location 18721 S University Blvd, Sugar Land, TX 77478 Date 7/14/2015 Bond No. 104865058, Permit No. 2015-1502 to make use of certain Fort Bend County property subject to, "A Revised Order Regulating the Laying, Construction, Maintenance, and Repair of Buried Cables, Conduits, and Pole Lines, In, Under, Across or Along Roads, Streets, Highways, and Drainage Ditches in Fort Bend County, Texas, Under the Jurisdiction of the Commissioners Court of Fort Bend County, Texas," as passed by the Commissioners Court of Fort Bend County, Texas the 3rd day of August, 1987, recorded in Volume \_\_\_\_\_ of the Minutes of the Commissioners Court of Fort Bend County, Texas, to the extent that such order is not inconsistent with Article 1436a, Vernon's Texas Civil Statutes. Upon Motion of Commissioner Meyers, seconded by Commissioner Morvan, duly put and carried, it is ORDERED, ADJUDGED AND DECREED that said notice of said above purpose is hereby acknowledged by the Commissioners Court of Fort Bend County, Texas, and that said notice be placed on record according to the regulation order thereof.

Notes:

1. Evidence of review by the Commissioners Court must be kept on the job site and failure to do so constitutes grounds for job shutdown.
2. Written notices are required:
  - a. 48 hours in advance of construction start up, and
  - b. when construction is completed and ready for final inspection
 Mail notices to: Permit Administrator  
 Fort Bend County Engineering  
 301 Jackson Street  
 Richmond, Texas 77469  
 281-633-7500
3. This permit expires one (1) year from date of permit if construction has not commenced.

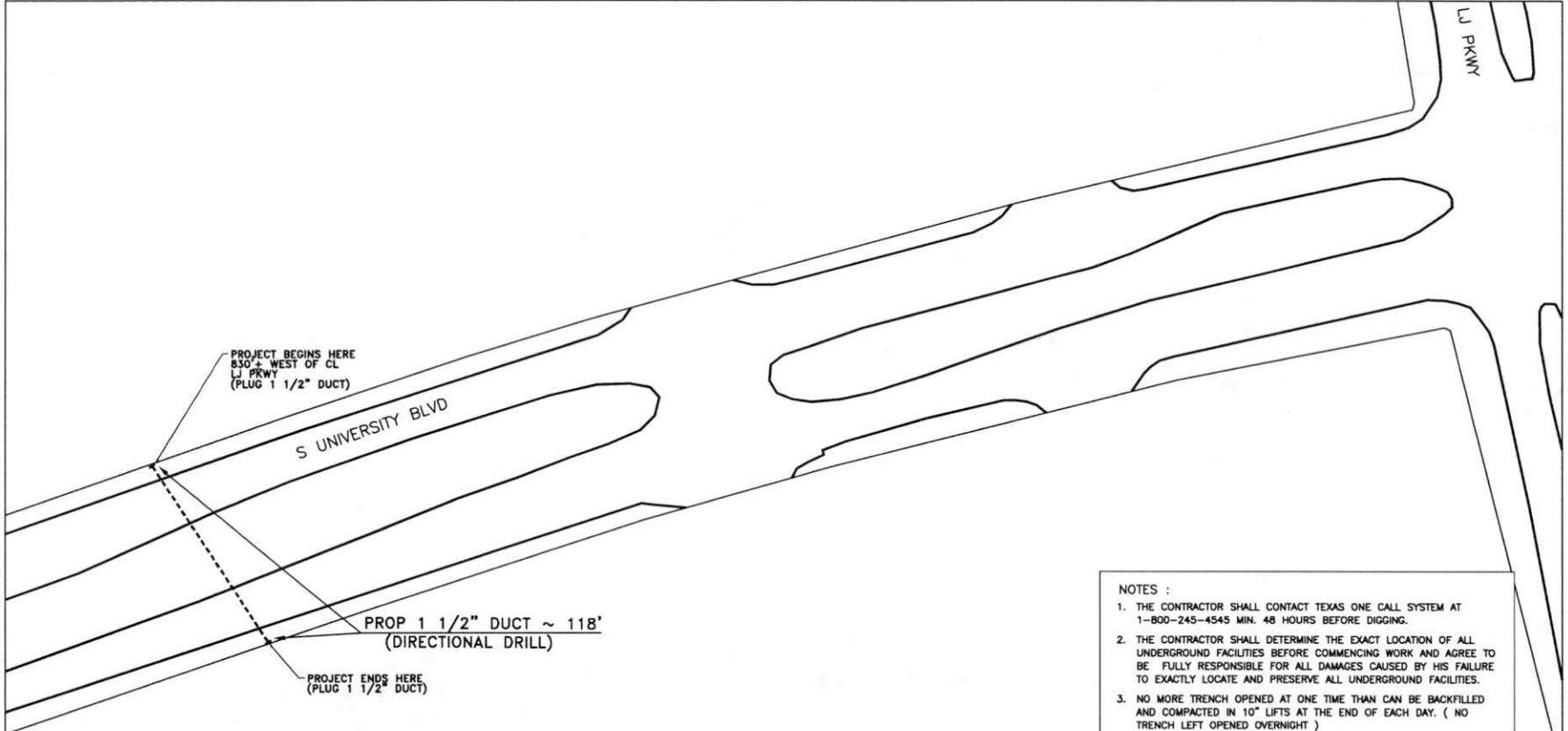
By: [Signature]  
County Engineer

Presented to Commissioners Court and approved.  
Recorded in Volume 7-28-15 / 16F  
Minutes of Commissioners Court

By: N/A  
Drainage District Engineer/Manager

Clerk of Commissioners Court  
By: [Signature]  
Deputy





PROJECT BEGINS HERE  
830 ± WEST OF CL  
LJ PKWY  
(PLUG 1 1/2" DUCT)

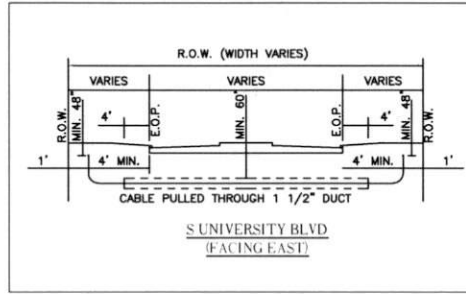
S UNIVERSITY BLVD

PROP 1 1/2" DUCT ~ 118'  
(DIRECTIONAL DRILL)

PROJECT ENDS HERE  
(PLUG 1 1/2" DUCT)

LJ PKWY

- NOTES :
1. THE CONTRACTOR SHALL CONTACT TEXAS ONE CALL SYSTEM AT 1-800-245-4545 MIN. 48 HOURS BEFORE DIGGING.
  2. THE CONTRACTOR SHALL DETERMINE THE EXACT LOCATION OF ALL UNDERGROUND FACILITIES BEFORE COMMENCING WORK AND AGREE TO BE FULLY RESPONSIBLE FOR ALL DAMAGES CAUSED BY HIS FAILURE TO EXACTLY LOCATE AND PRESERVE ALL UNDERGROUND FACILITIES.
  3. NO MORE TRENCH OPENED AT ONE TIME THAN CAN BE BACKFILLED AND COMPACTED IN 10" LIFTS AT THE END OF EACH DAY. ( NO TRENCH LEFT OPENED OVERNIGHT )
  4. ALL EXCESS EXCAVATION TO BE REMOVED FROM THE ROAD RIGHT-OF-WAY AT THE END OF EACH DAY.
  5. DITCHES TO BE OPENED AT THE END OF EACH DAY TO ASSURE ADEQUATE DRAINAGE.
  6. ROAD MUST BE KEPT OPEN TO TRAFFIC AND CONTRACTOR MUST PROVIDE ADEQUATE FLAGMEN, SIGNALS, ETC., TO PROVIDE COMPLETE SAFETY TO THE PUBLIC.
  7. IF IT BECOMES NECESSARY FOR EQUIPMENT TO OPERATE ON A PORTION OF THE PAVEMENT, PRECAUTIONS MUST BE TAKEN TO PREVENT ANY DAMAGE WHATSOEVER TO THE PAVEMENT.
  8. CONDITION OF ROAD UPON COMPLETION OF JOB SHALL BE AS GOOD OR BETTER THAN PRIOR TO STARTING.
  9. CONTRACTOR SHALL COMPLY WITH ALL APPLICABLE NATIONAL ELECTRICAL SAFETY CODE (NESC) REQUIREMENTS, CENTERPOINT ENERGY ELECTRIC POLE ATTACHMENT GUIDELINES & PROCEDURES AND ALL APPLICABLE LOCAL REQUIREMENTS AND REGULATIONS FOR PLACEMENT OF AERIAL CABLE FACILITIES.



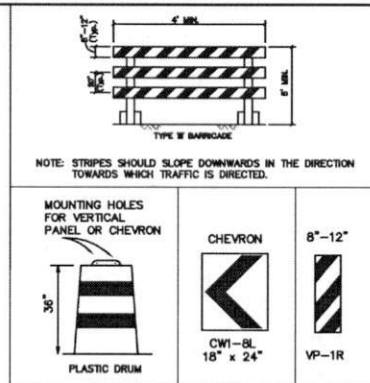
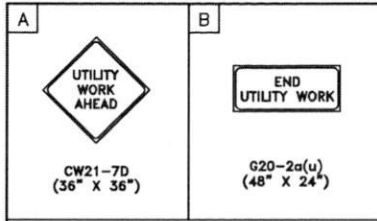
**Comcast**  
7033 AIRPORT BLVD.  
HOUSTON, TX 77061-3912

COMCAST SHALL INSTALL A 1-1 1/2" CONDUIT ACROSS S UNIVERSITY BLVD APPROXIMATELY 830' WEST OF CL LJ PKWY FOR A DISTANCE OF 118 LF.

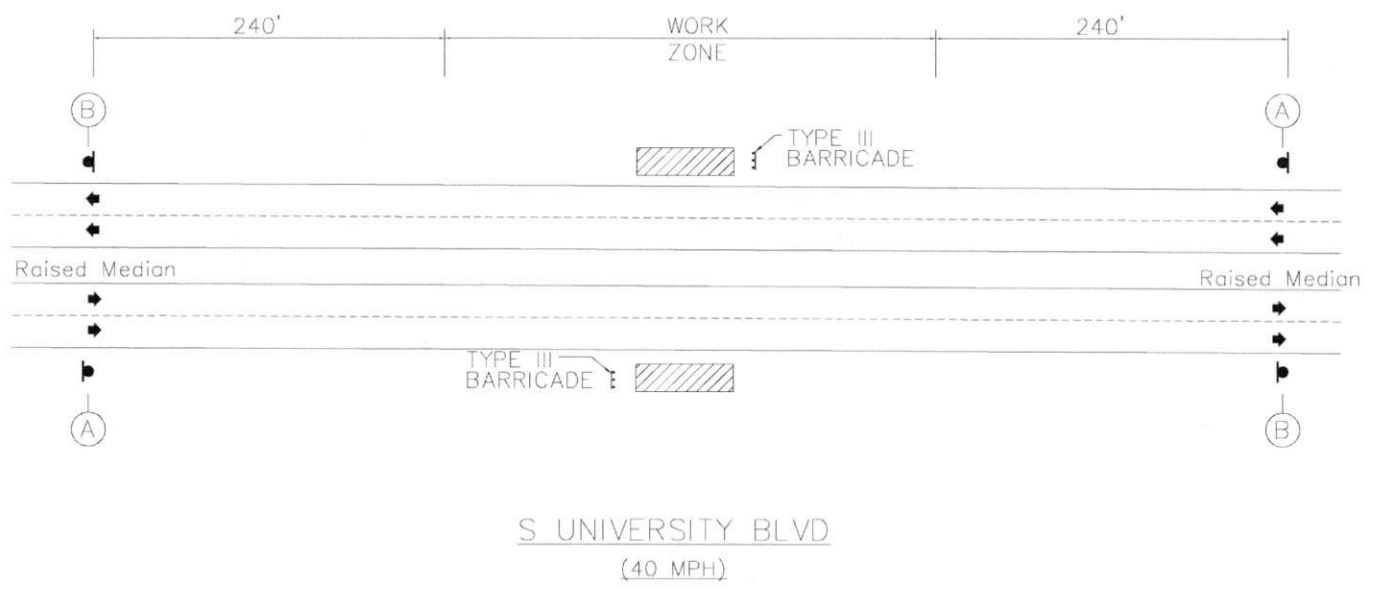
ME513453B - METHODIST HOSPITAL

DESIGNED BY: JIER, LLC  
DRAWN BY: WDK  
DWG. NO.  
SHEET NO. 1 OF 1

LAMBERT: ----  
DATE: 07/10/2015  
KEY MAP NO. 609-N  
SCALE: NTS



- SPECIAL TRAFFIC REQUIREMENTS**
- Contractor shall provide and install traffic control devices in conformance with part VI of the Texas Manual on Uniform Traffic Control Devices (Texas MUTCD, most recent edition with revisions) during construction.
  - No lanes shall be closed during the hours of 7:00 AM to 9:00 AM and 4:00 PM to 6:30 PM Monday thru Friday.
  - An off-duty Uniformed Police Officer is required to direct traffic when lanes are blocked.
  - Contractor shall cover open pavement excavations with anchored steel plates during non-working hours, and open lanes for normal traffic flow. If covering is not feasible, use Trantax FR 336 EFX 36" delineator or approved equal with sheeting and base spoxed to pavement next to excavation during non-working hours.
  - Approved copies of Traffic Control Plans and lane closure permits shall be available for inspection at job site at all times.
  - If the contractor chooses to use a different method of "Traffic Control Plans" during the construction than what is outlined in the contract drawings, they shall be responsible to prepare and submit an alternate set of plans\* to Harris County traffic Section for approval ten working days prior to implementation.  
 \*These plans shall be drawn to scale on reproducible mylar and sealed by a Licensed Engineer in the State of Texas. Plans will become a part of the contract drawings.
  - If the project is within 400 feet from a signalized intersection, the contractor shall contact Harris County public infrastructure department, signal division, at 713-881-3210 five(5) working days prior to the start of construction.



- LEGEND**
- PLASTIC DRUM (see spacing for channelizing devices)
  - OFF-DUTY UNIFORMED POLICE OFFICER
  - ▨ TYPE III BARRICADE
  - ◀ FLASHING ARROW PANEL

**Jier, LLC**

DOUG KRAUSE  
85493  
LICENSED PROFESSIONAL ENGINEER

*Doug Krause* 07/14/15

TRAFFIC CONTROL PLAN

S UNIVERSITY BLVD  
(TYPICAL)

SHEET NO. 1 OF 1      SCALE: N.T.S.

0:\001\204\_01-1808-01 - Modified.mxd - 4/11/2018 - Modified.mxd - 2014-11-10 10:44:00 AM