



Fort Bend County Engineering
FORT BEND COUNTY, TEXAS

Richard W. Stolleis, P.E.
County Engineer

May 11, 2015

Commissioner James Patterson
Fort Bend County Precinct 4
12919 Dairy Ashford Road Suite 200
Sugar Land, TX 77478

**RE: Long Meadow Farms, Section 30 - Traffic Control Plan
Long Meadow Farms, Section 31**

Dear Commissioner Patterson:

Fort Bend County Engineering has completed and recommends approval of the traffic control plans for the above referenced subdivisions. The public hearing date for acceptance of the plans is being scheduled.

A copy of the traffic control plans are attached for your review. If you should have any questions, please give me a call.

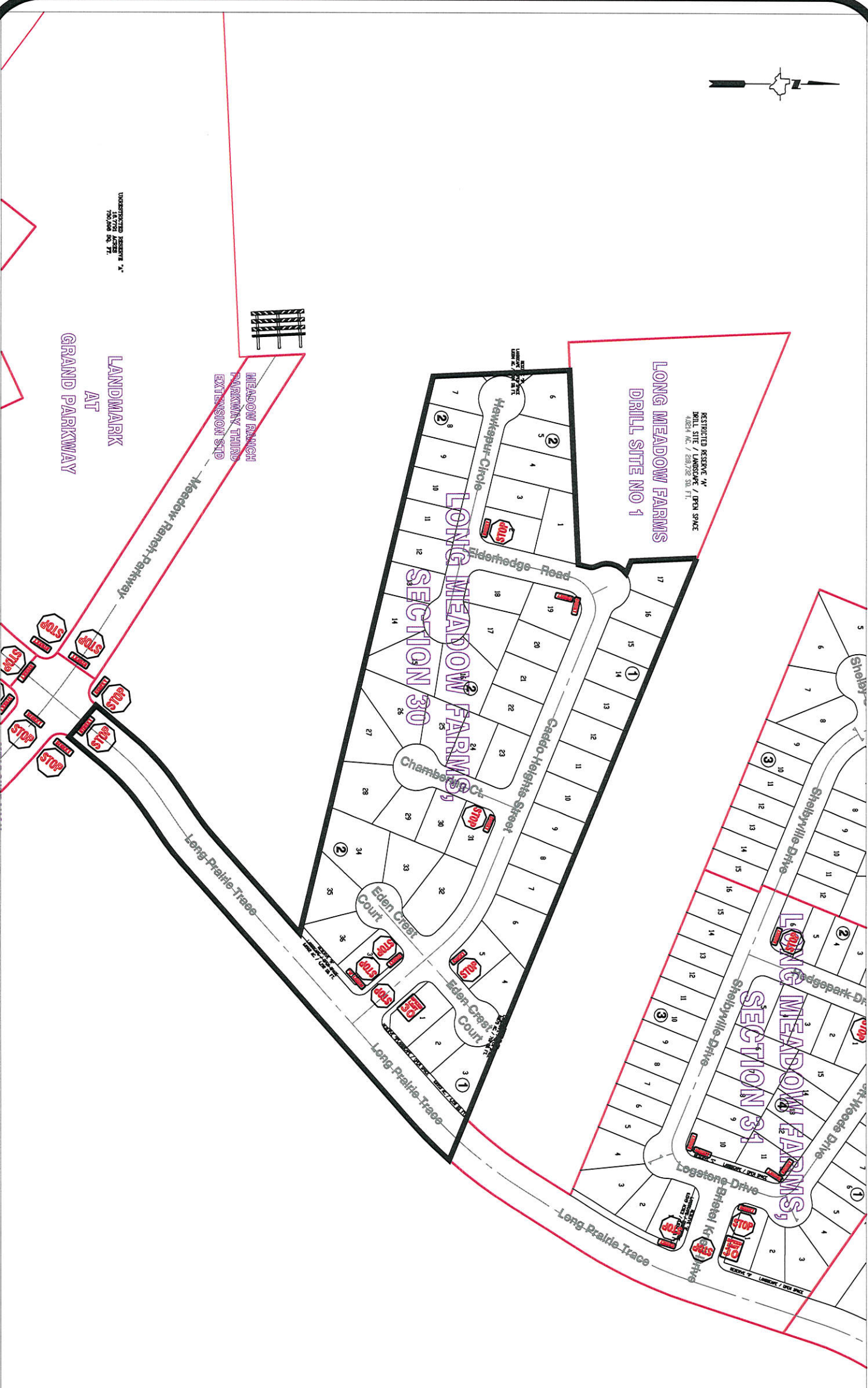
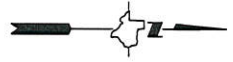
Sincerely,



Jorge Salgado
Construction Inspector
Engineer Technician I

JS/mjs

cc: Judge Robert E. Hebert, County Judge
Marc Grant - FBC Road & Bridge
Brian Fields - Signage Department
File



Note:

The purpose of this traffic control plan is to establish traffic control for Long Meadow Farms, Section 30.

Drawn By: L. Brdecka

Date: 5-11-15

Approved By: Clay A. Forster, PE

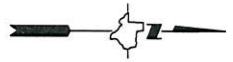
Date: 11/24/15

Scale

1" = 300'-0"

**Long Meadow Farms,
Section 30
Control Map and
Traffic Sign Layout**

Fort Bend County Engineering Dept.
301 Jackson Street
Richmond, Texas 77469



Note:

The purpose of this traffic control plan is to establish traffic control for Long Meadow Farms, Section 31.

Drawn By: L. Brdecka

Date: 5-11-15

Approved By: Clay A. Forster, PE

Date: 11 MAY 15

Scale

1" = 300'-0"

**Long Meadow Farms,
Section 31
Control Map and
Traffic Sign Layout**

Fort Bend County Engineering Dept.
301 Jackson Street
Richmond, Texas 77469