



P.O. BOX 1386 | HOUSTON, TEXAS 77251-1386 | (713) 802-5000 | WWW.TXDOT.GOV

November 17, 2014

Rick Staigle, P.E.  
First Assistant County Engineer  
Fort Bend County  
301 Jackson St.  
Richmond, TX 77469

RE: CSJ 0838-03-023  
FM 361 at Fairchilds Creek  
Notification of future bridge closure and temporary detour route

Dear Mr. Staigle:

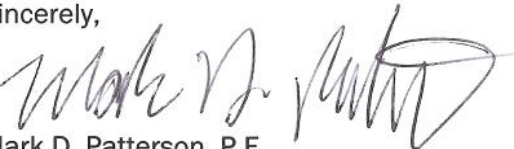
The Texas Department of Transportation (TxDOT) and Cobb, Fendley & Associates, Inc. (CFA), have developed construction plans for the replacement of the above referenced bridge in Fort Bend County. The project is scheduled to let for construction by TxDOT in May 2015. Due to the nature of the project, it will be necessary to close this bridge and detour the traffic during construction.

We expect the bridge closure detour to be in service for approximately four months. Once construction is complete, traffic will utilize the new bridge. Attached is the detour layout for this bridge construction using FM 2977, Psencik Rd, and Fairchild Rd as coordinated between CFA and Fort Bend County earlier this year. Your concurrence with this detour route is greatly appreciated.

Please contact Hamid Youssefi, at (713) 802-5503 should you have any questions concerning this matter.

Concur: *Rick Staigle, PE*  
Rick Staigle, P.E.  
First Assistant County Engineer

Sincerely,

  
Mark D. Patterson, P.E.  
Director of Consultant  
Contract Administration  
Houston District

HY:ht

Attachments

Cc: Hamid Youssefi, P.E.  
Craig Hester, P.E., CFA

OUR GOALS

MAINTAIN A SAFE SYSTEM ▪ ADDRESS CONGESTION ▪ CONNECT TEXAS COMMUNITIES ▪ BEST IN CLASS STATE AGENCY  
An Equal Opportunity Employer



**STATE OF TEXAS**  
**TEXAS DEPARTMENT OF TRANSPORTATION**

# PLANS OF PROPOSED STATE HIGHWAY IMPROVEMENT

PROJECT NO  
CSJ 0838-03-023  
LIMITS: FM 361 AT FAIRCHILD CREEK

PROJECT CONTROL	ROADWAY LENGTH		BRIDGE LENGTH		NET LENGTH	
	FT	MI	FT	MI	FT	MI
CNTR-SEC-JOB	300.00	0.057	100.00	0.019	400.00	0.076
0838-03-023						

FM 361  
FORT BEND COUNTY

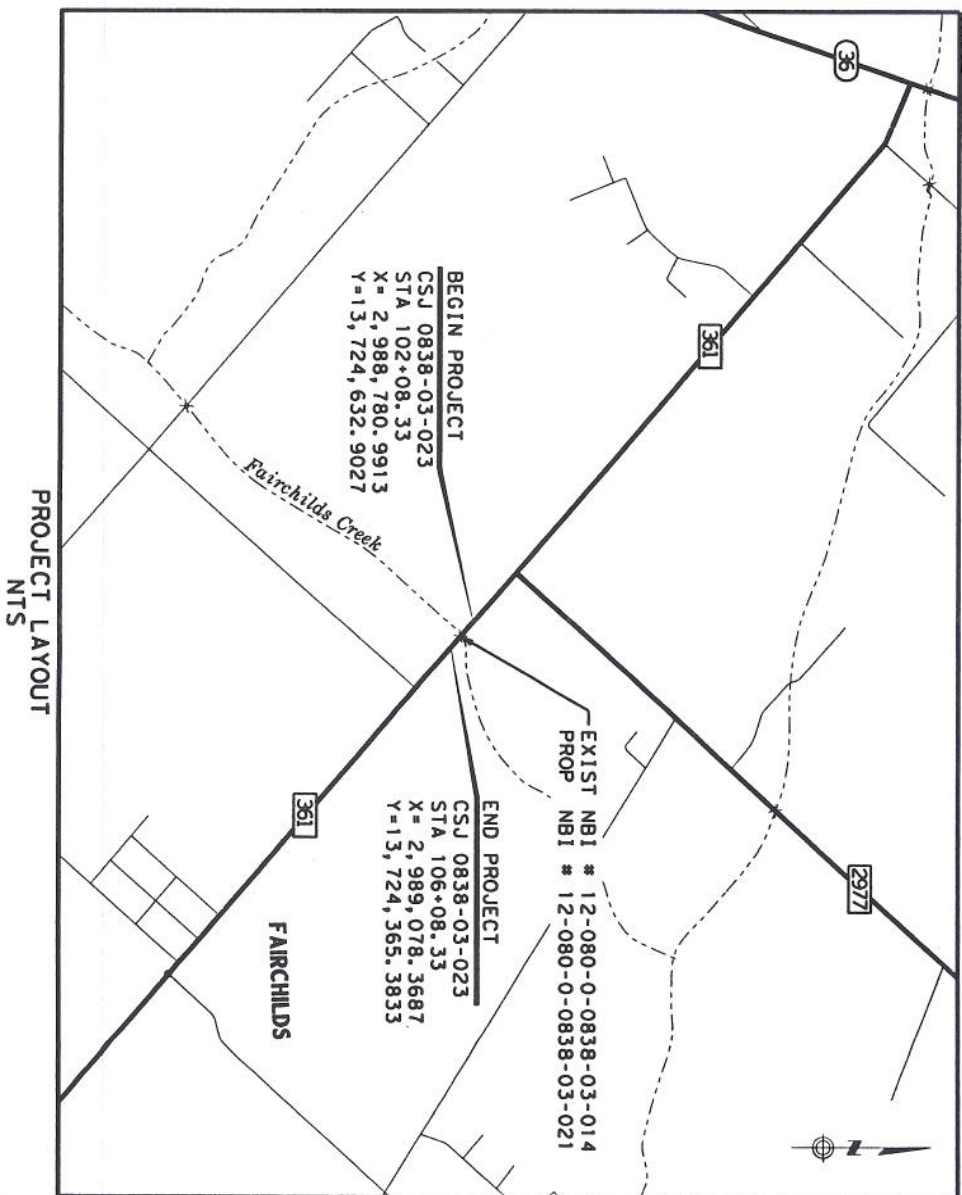
FOR THE CONSTRUCTION OF THE REPLACEMENT OF EXISTING BRIDGE FACILITIES  
CONSISTING OF BRIDGE STRUCTURE AND ROADWAY APPROACHES

**TDLR INSPECTION NOT REQUIRED**

HORIZONTAL CONTROL IS BASED ON RTK GPS OBSERVATIONS HOLDING TxDOT VRS NETWORK IN FORT BEND COUNTY, TEXAS.

- ALL BEARINGS AND COORDINATES ARE BASED ON THE TEXAS COORDINATE SYSTEM, SOUTH CENTRAL ZONE, NORTH AMERICAN DATUM OF 1983, 2011 ADJUSTMENT, 2010 EPOCH.
- ALL DISTANCES AND COORDINATES SHOWN ARE SURFACE AND MAY BE CONVERTED TO GRID BY DIVIDING BY A COMBINED ADJUSTMENT FACTOR OF 1.00013.

VERTICAL CONTROL IS BASED ON RTK GPS OBSERVATIONS HOLDING TxDOT VRS NETWORK IN FORT BEND COUNTY, TEXAS. ALL ELEVATIONS ARE RELATED TO NAVD 88 USING GEOID 12A TO COMPUTE ORTHOMETRIC HEIGHTS (SEA LEVEL ELEVATIONS).



COUNTY FORT BEND PROJ NO             
HWY NO FM 361 LETTING DATE             
DATE ACCEPTED           

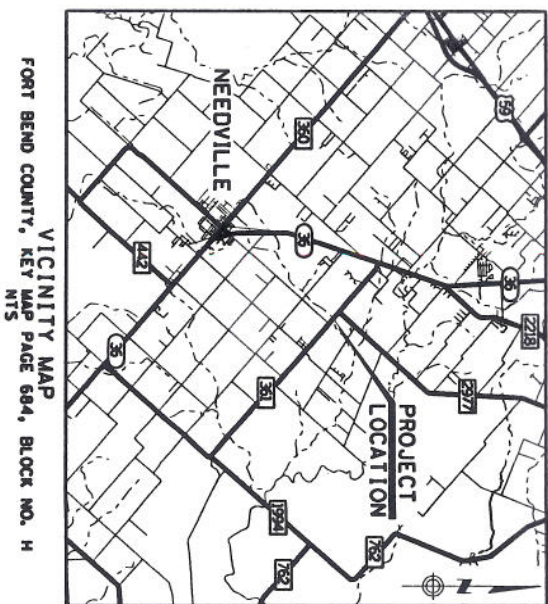
SPECIFICATIONS ADOPTED BY THE TEXAS DEPARTMENT OF TRANSPORTATION, JUNE 1, 2004 AND SPECIFICATION ITEMS LISTED AND DATED AS FOLLOWS, SHALL GOVERN ON THIS PROJECT: REQUIRED CONTRACT PROVISIONS FOR ALL FEDERAL-AID CONSTRUCTION CONTRACTS (FORM FHWA 1273, MAY, 2012).

EQUATIONS - NONE  
EXCEPTIONS - NONE  
RAILROAD GRADE CROSSINGS - NONE

© 2014 by Texas Department of Transportation;  
all rights reserved.

FUNCTIONAL CLASS: MAJOR COLLECTOR			
PROJECT CONTROL	ADT		DESIGN SPEED
	2015	2035	
CNTR-SEC-JOB	5027	7106	MPH
0838-03-023			60

FED. NO.	PROJECT NO.		SHEET NO.
6			1
STATE	DISTRICT	COUNTY	
TEXAS	HOU		
CONTROL NO.	SECTION NO.	JOB NO.	WARRANTY NO.
0838	03	023	FM 36



VICINITY MAP  
FORT BEND COUNTY, KEY MAP PAGE 684, BLOCK NO. H  
NTS

## INTERIM REVIEW

**Not intended for construction, bidding or permit purposes.**

Engineer: CRAIG HESTER

P.E. Serial No.: 65414

Date: 10/24/2014

**CobbFendley**  
TBPE Firm Registration No. 274  
TBPE's Firm Registration No. 100467  
3430 Northwest Freeway, Suite 1100  
Houston, Texas 77040  
713.462.3242 | fax 713.462.3262  
[www.cobbhendley.com](http://www.cobbhendley.com)

TBPE Firm Registration No. 274  
 TBPLS Firm Registration No. 100467  
 3430 Northwest Freeway, Suite 1100  
 Houston, Texas 77040  
 713.462.3242 | fax 713.462.3262  
[www.cobbfendley.com](http://www.cobbfendley.com)

462.3242 | fax 713.462.3262  
www.cobbfendley.com

[www.cobbfendley.com](http://www.cobbfendley.com)



SUBMITTED FOR LETTING

**APPROVED FOR LETTING**

PROJECT MANAGER

DIRECTOR, TRAFFIC OPERATIONS DIVISION

RECOMMENDED FOR LETTING

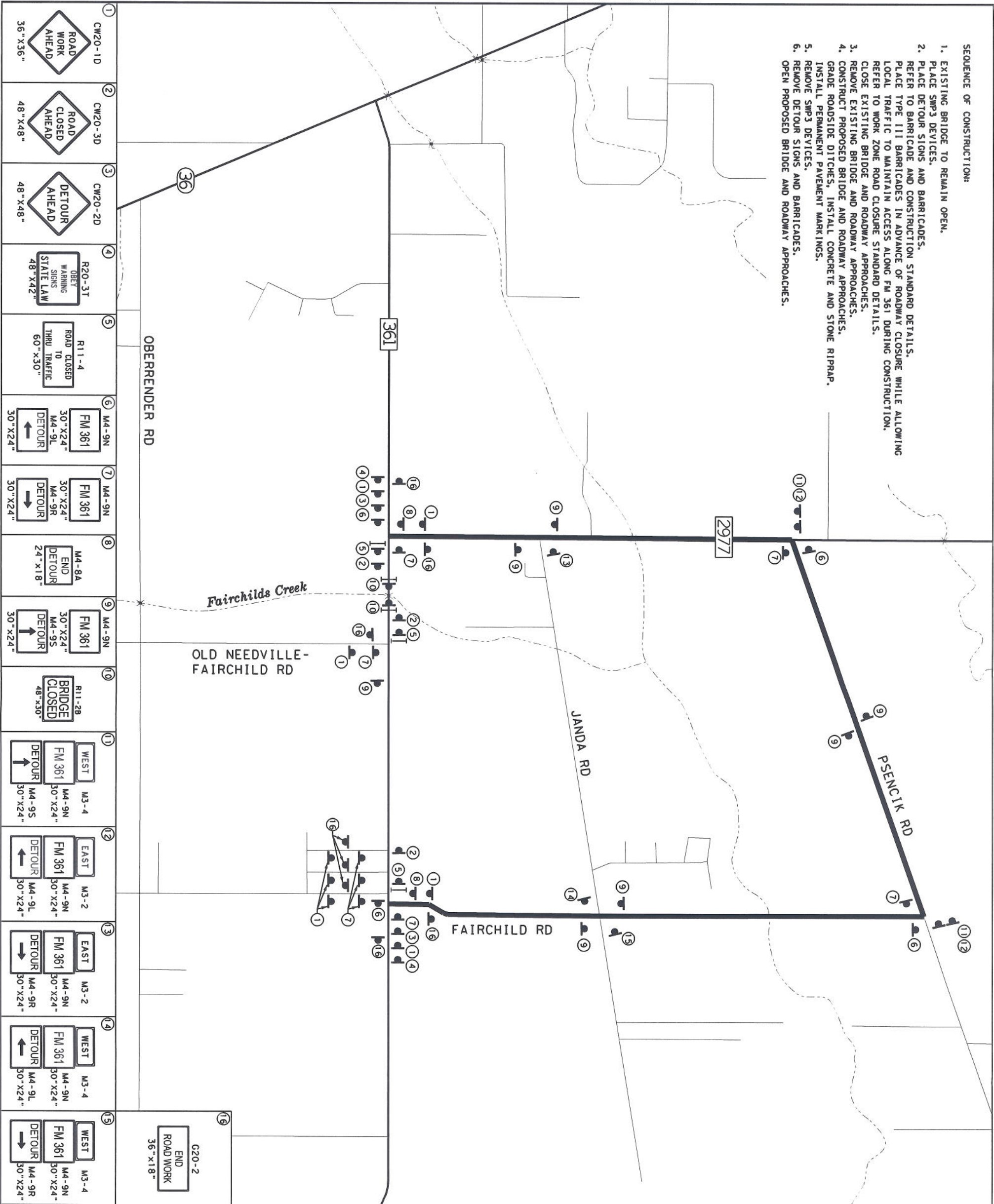
APPROVED FOR LETTING

DISTRICT ENGINEER

**DIRECTOR, DESIGN DIVISION**



- SEQUENCE OF CONSTRUCTION:
1. EXISTING BRIDGE TO REMAIN OPEN.
  2. PLACE SMP3 DEVICES.
  3. PLACE DETOUR SIGNS AND BARRICADES.
  4. REFER TO BARRICADE AND CONSTRUCTION STANDARD DETAILS.
  5. PLACE TYPE III BARRICADES IN ADVANCE OF ROADWAY CLOSURE WHILE ALLOWING LOCAL TRAFFIC TO MAINTAIN ACCESS ALONG FM 361 DURING CONSTRUCTION.
  6. REFER TO WORK ZONE ROAD CLOSURE STANDARD DETAILS.
  7. CLOSE EXISTING BRIDGE AND ROADWAY APPROACHES.
  8. REMOVE EXISTING BRIDGE AND ROADWAY APPROACHES.
  9. CONSTRUCT PROPOSED BRIDGE AND ROADWAY APPROACHES.
  10. GRADE ROADSIDE DITCHES, INSTALL CONCRETE AND STONE RIPRAP.
  11. INSTALL PERMANENT PAVEMENT MARKINGS.
  12. REMOVE SMP3 DEVICES.
  13. REMOVE DETOUR SIGNS AND BARRICADES.
  14. OPEN PROPOSED BRIDGE AND ROADWAY APPROACHES.



- LEGEND
- 1. SIGN
  - 2. TYPE III BARRICADE
  - 3. DETOUR ROUTE



- NOTES:
1. PLACE THREE PORTABLE CHANGEABLE MESSAGE SIGNS (PCMS) TO WARN DRIVERS OF FM 361 BRIDGE CLOSURE A MINIMUM OF TWO WEEKS IN ADVANCE OF CLOSURE.
  2. REFER TO BARRICADE AND CONSTRUCTION STANDARD DETAILS FOR SIGN SPACING REQUIREMENTS.

**INTERIM REVIEW**

Not intended for construction, bidding or permit purposes.

Engineer: W. MATTHEW ADAMS

P.E. Serial No.: 105842

Date: 11/21/2014



**CobbFendley**

13430 Northwest Freeway, Suite 1100  
Houston, Texas 77040  
713.462.3242 | fax 713.462.3262  
www.cobbendley.com



DETOUR LAYOUT									
SHEET 1 OF 1									
NO.	FEED NO.	STATE	PROJECT NO.	NO.	NO.	NO.	NO.	NO.	NO.
1	6	TEXAS							
2									
3									
4									
5									
6									
7									
8									
9									
10									
11									
12									
13									
14									
15									
16									
17									
18									
19									
20									
21									
22									
23									
24									
25									
26									
27									
28									
29									
30									
31									
32									
33									
34									
35									
36									
37									
38									
39									
40									
41									
42									
43									
44									
45									
46									
47									
48									
49									
50									
51									
52									
53									
54									
55									
56									
57									
58									
59									
60									
61									
62									
63									
64									
65									
66									
67									
68									
69									
70									
71									
72									
73									
74									
75									
76									
77									
78									
79									
80									
81									
82									
83									
84									
85									
86									
87									
88									
89									
90									
91									
92									
93									
94									
95									
96									
97									
98									
99									
100									