

FM 1093 WESTPARK EXTENSION



Project Update

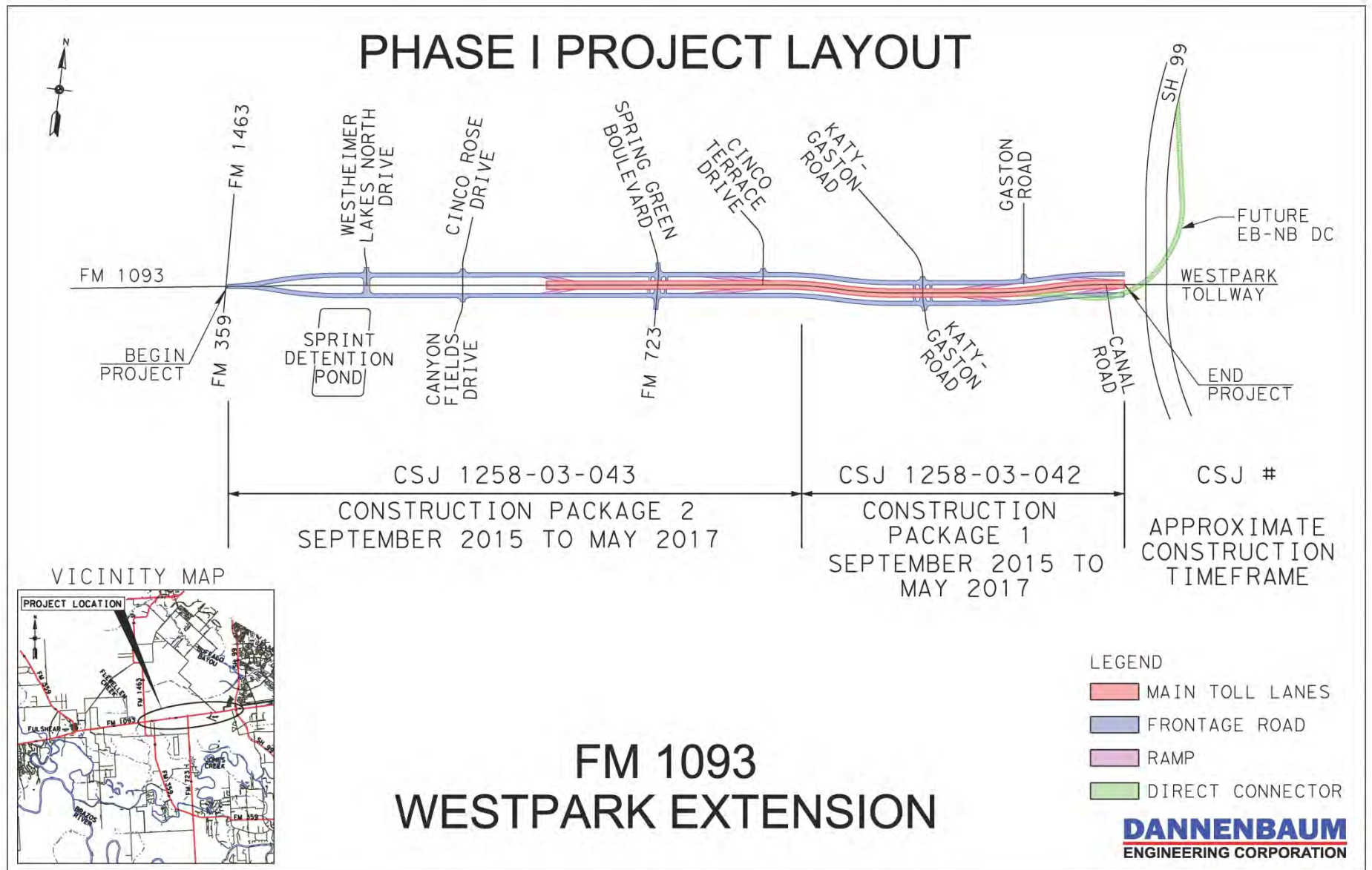
December 2, 2014

DANNENBAUM
ENGINEERING CORPORATION



FM 1093 WESTPARK EXTENSION PHASE I – FM 359/1463 TO SH 99

PHASE I PROJECT LAYOUT



FM 1093 WESTPARK EXTENSION

DANNENBAUM
ENGINEERING CORPORATION

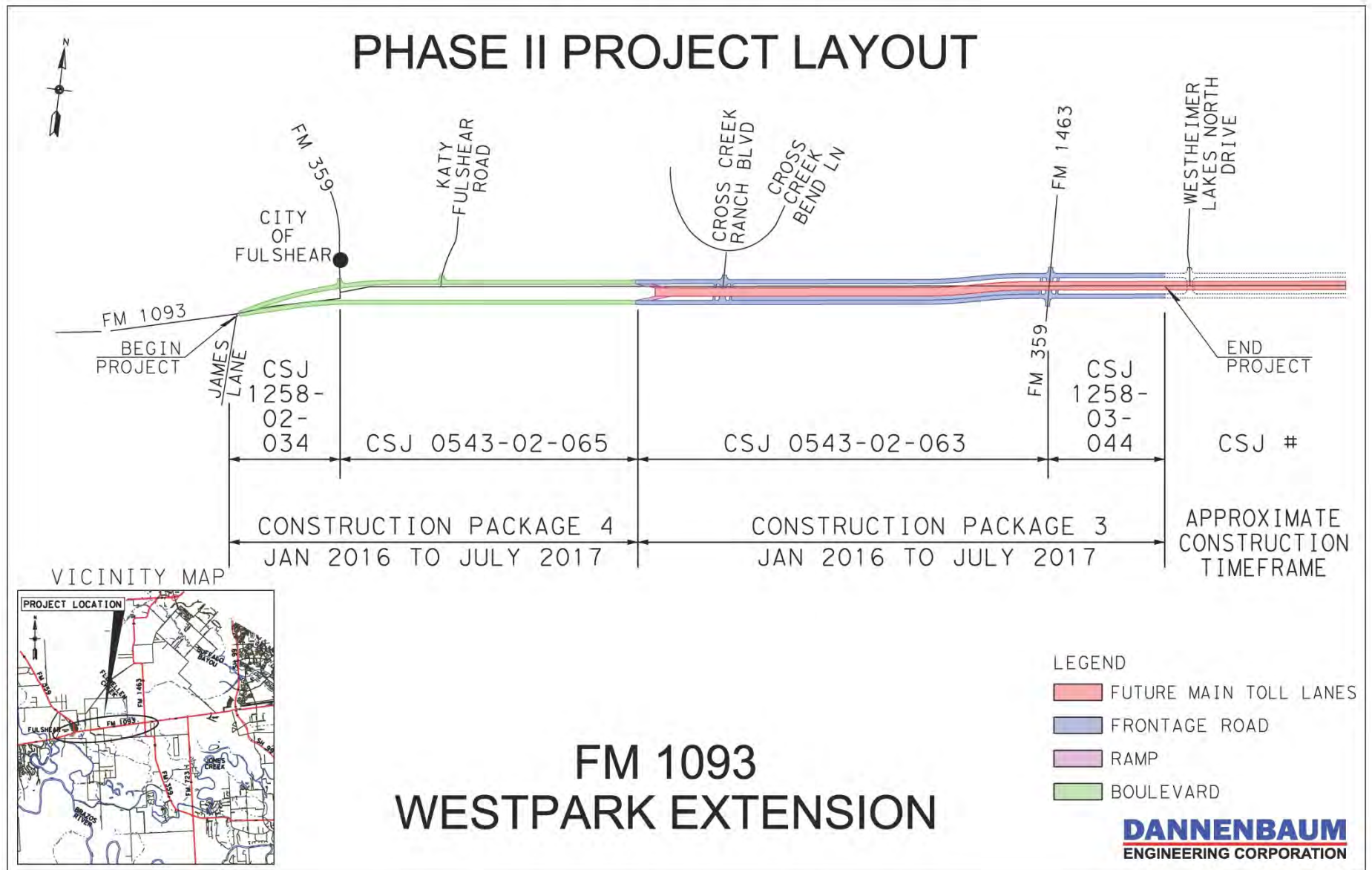
FM 1093 WESTPARK EXTENSION PHASE I – FM 359/1463 TO SH 99

Phase I Update

- **July 31st Public Meeting**
- **Current Development Schedule**
 - **EA Re-Evaluation submitted to TxDOT in October**
 - **EA Re-Evaluation Approval: January 2015**
 - **Schematic and Hydraulic Impact Report approved by TxDOT**
 - **PS&E 60% Design submittal: December 2014**
 - **PS&E Final Design submittal: April 2015**
 - **Project Letting: July 2015**
 - **Construction: September 2015 to May 2017**

FM 1093 WESTPARK EXTENSION PHASE II – FULSHEAR TO FM 359/FM 1463

PHASE II PROJECT LAYOUT



FM 1093 WESTPARK EXTENSION

LEGEND

- FUTURE MAIN TOLL LANES
- FRONTAGE ROAD
- RAMP
- BOULEVARD

DANNENBAUM
ENGINEERING CORPORATION

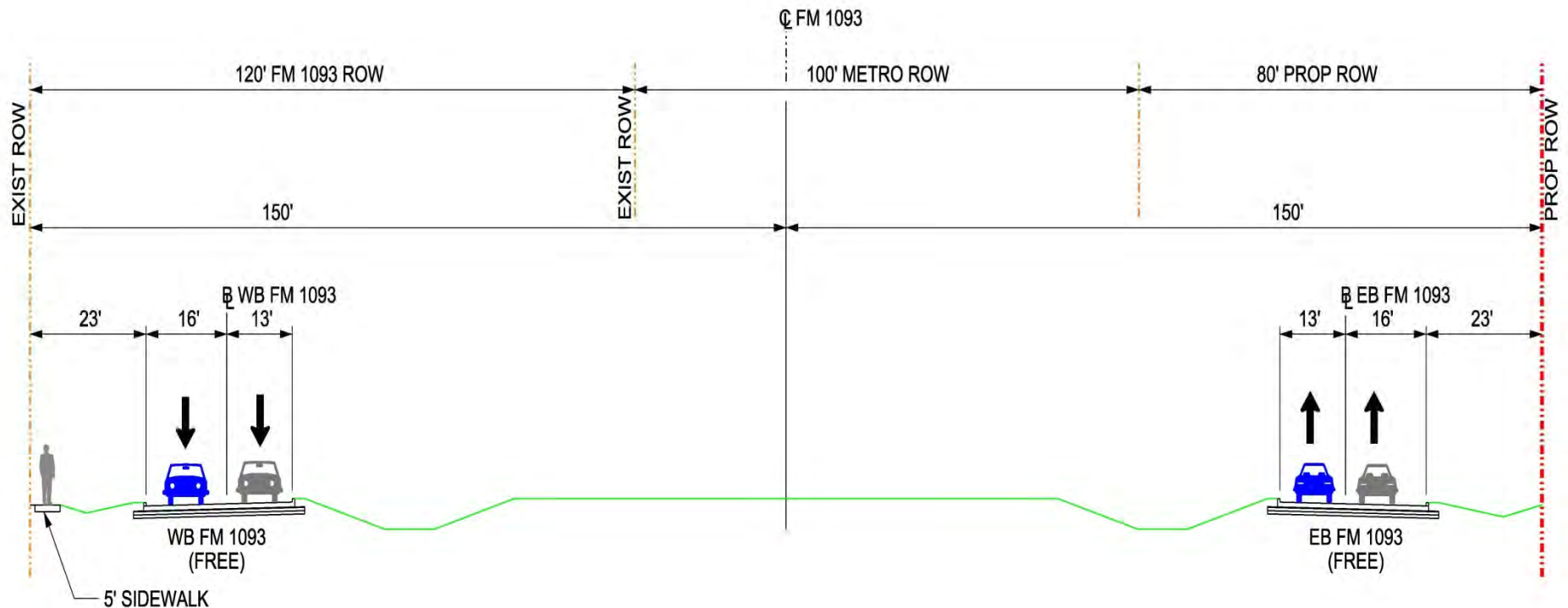
FM 1093 WESTPARK EXTENSION PHASE II – FULSHEAR TO FM 359/FM 1463

Phase II Update

- Original Design utilized 50' of METRO ROW
- Revised Design utilizes 100' of METRO ROW and property south of METRO
- Design Revisions provide opportunities to improve Project
- Current Development Schedule
 - Phase II Public Meeting: December 9th, 5:30 pm at Irene Stern Community Center in Fulshear
 - Environmental Assessment Approval: September 2015
 - Complete Design: September 2015
 - Construction: January 2016 to June 2017

FM 1093 WESTPARK EXTENSION PHASE II – FULSHEAR TO FM 359/FM 1463

PROPOSED TYPICAL SECTION



**WEST OF CROSS CREEK RANCH BOULEVARD
(LOOKING EAST)**

DANNENBAUM
ENGINEERING CORPORATION

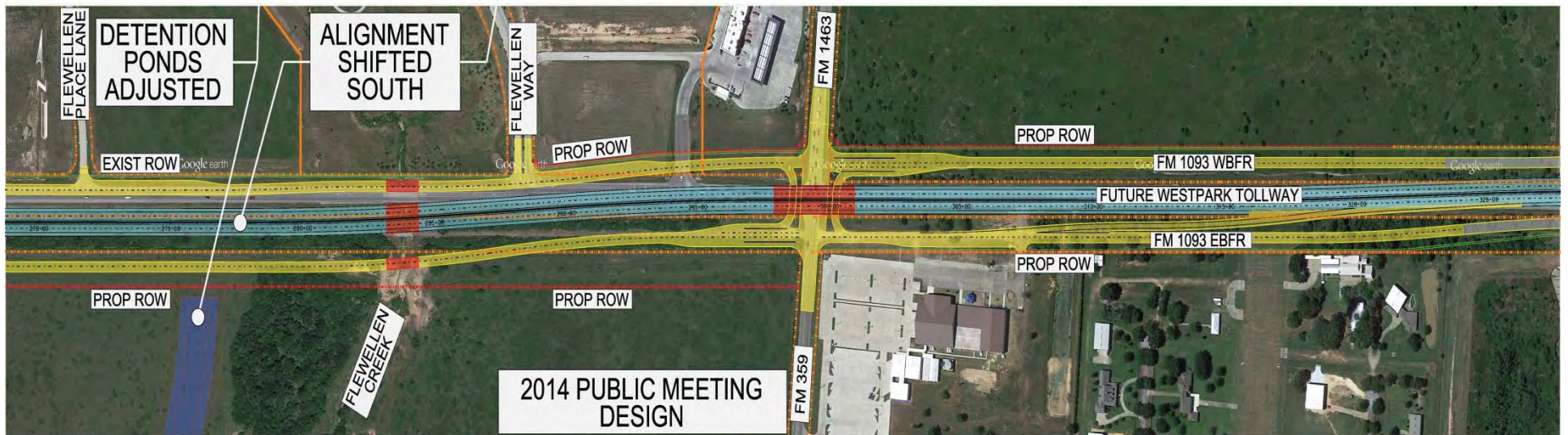
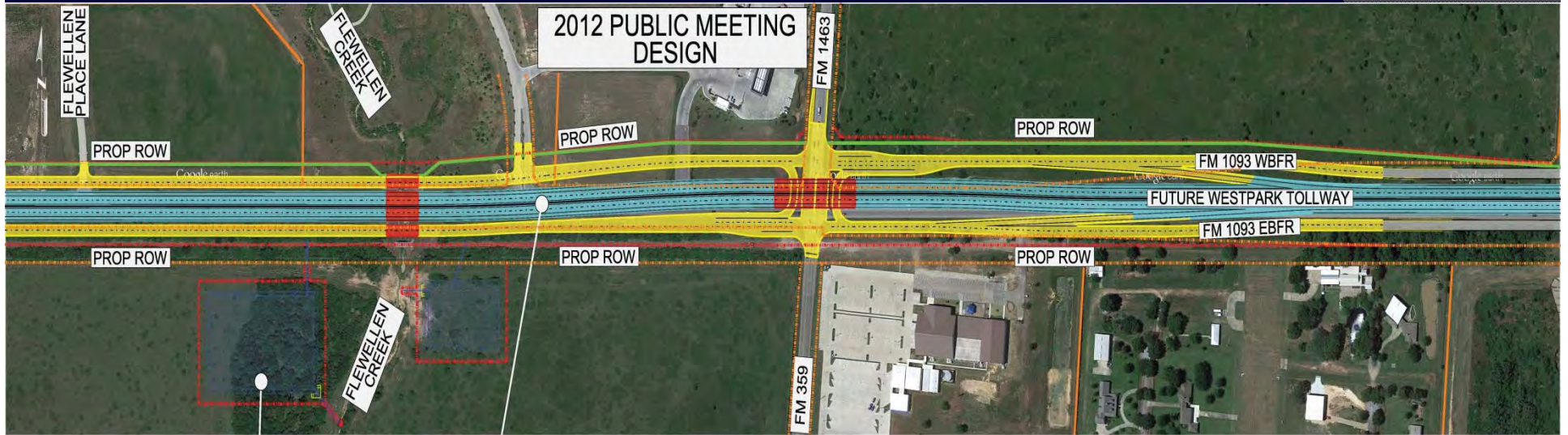
FM 1093 WESTPARK EXTENSION PHASE II DESIGN CHANGES



WESTHEIMER LAKES TO END OF PHASE I

DANNENBAUM
ENGINEERING CORPORATION

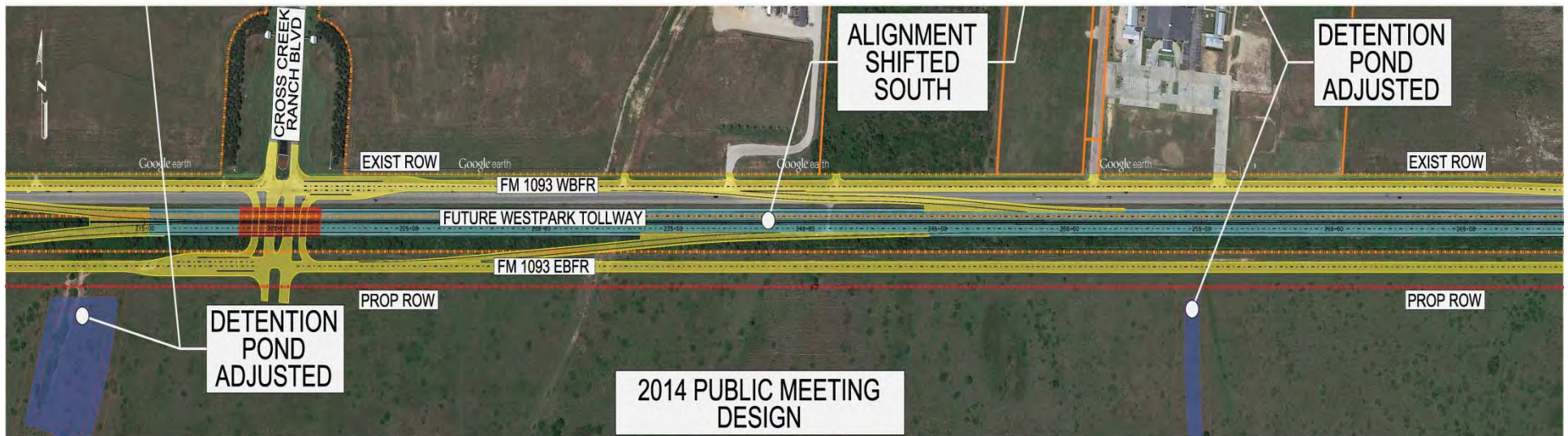
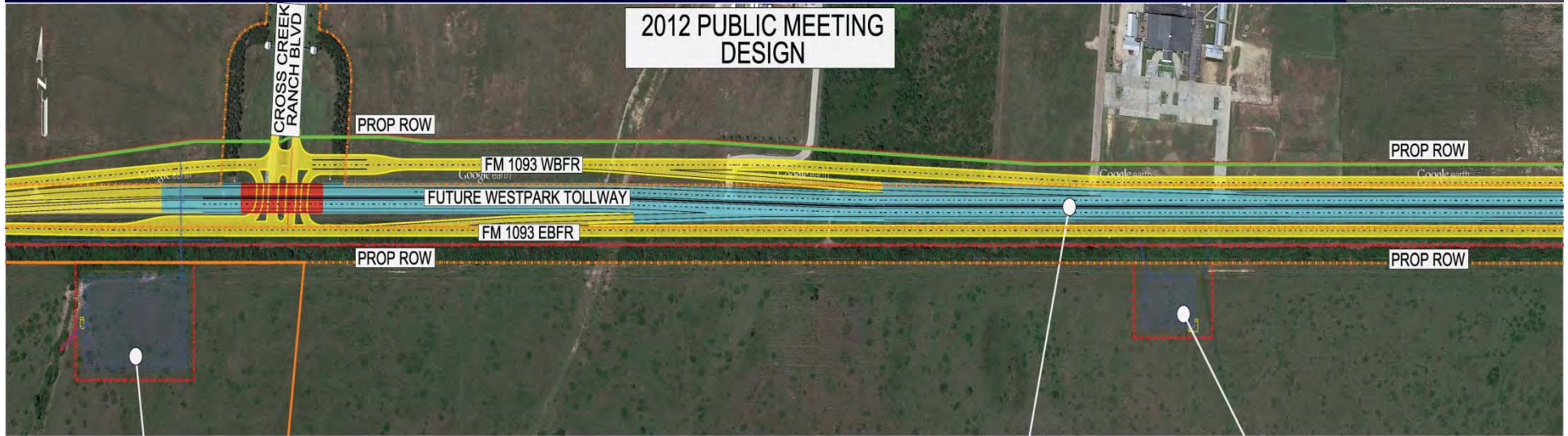
FM 1093 WESTPARK EXTENSION PHASE II DESIGN CHANGES



FLEWELLEN PLACE LN TO WESTHEIMER LAKES

DANNENBAUM
ENGINEERING CORPORATION

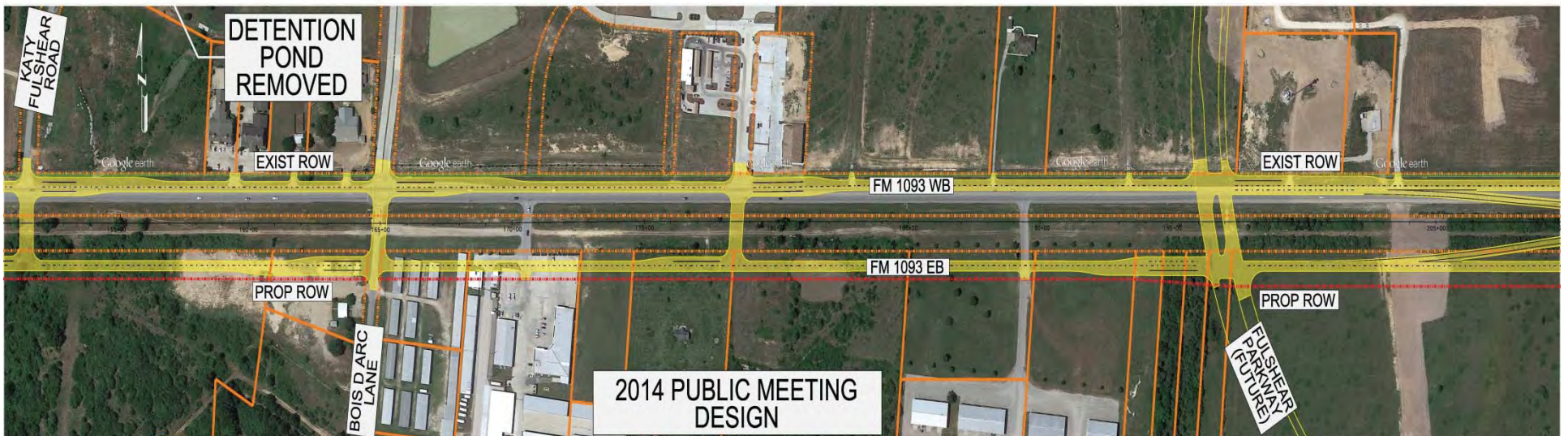
FM 1093 WESTPARK EXTENSION PHASE II DESIGN CHANGES



CROSS CREEK RANCH TO FLEWELLEN PLACE LN

DANNENBAUM
ENGINEERING CORPORATION

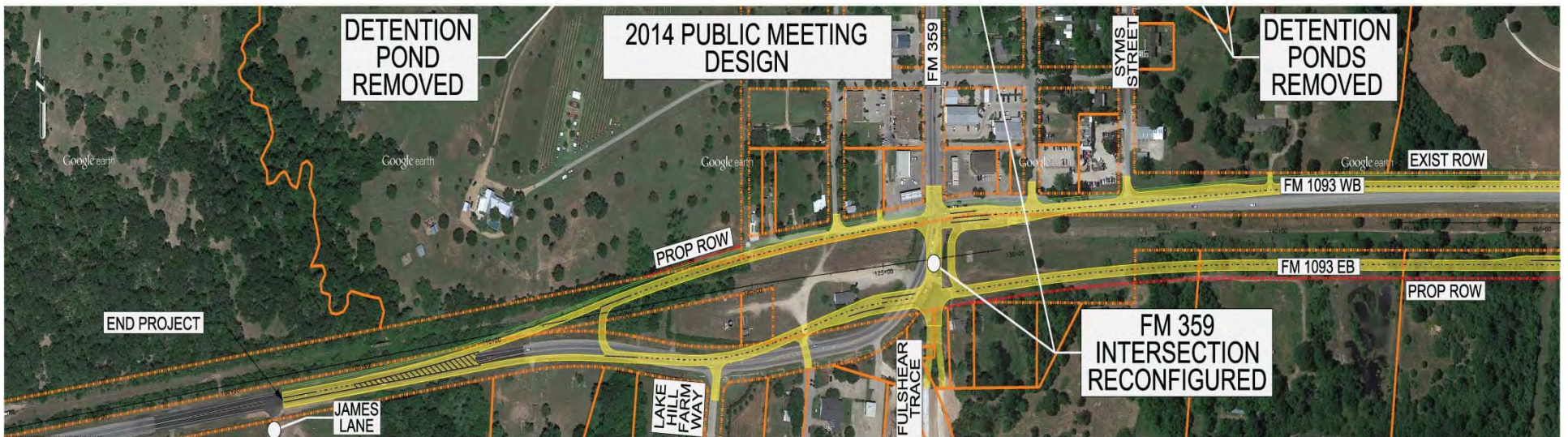
FM 1093 WESTPARK EXTENSION PHASE II DESIGN CHANGES



KATY FULSHEAR ROAD TO CROSS CREEK RANCH

DANNENBAUM
ENGINEERING CORPORATION

FM 1093 WESTPARK EXTENSION PHASE II DESIGN CHANGES



JAMES LANE TO KATY FULSHEAR ROAD

DANNENBAUM
ENGINEERING CORPORATION

FM 1093 WESTPARK EXTENSION

QUESTIONS ?