

FM 1093 WESTPARK EXTENSION



Project Update

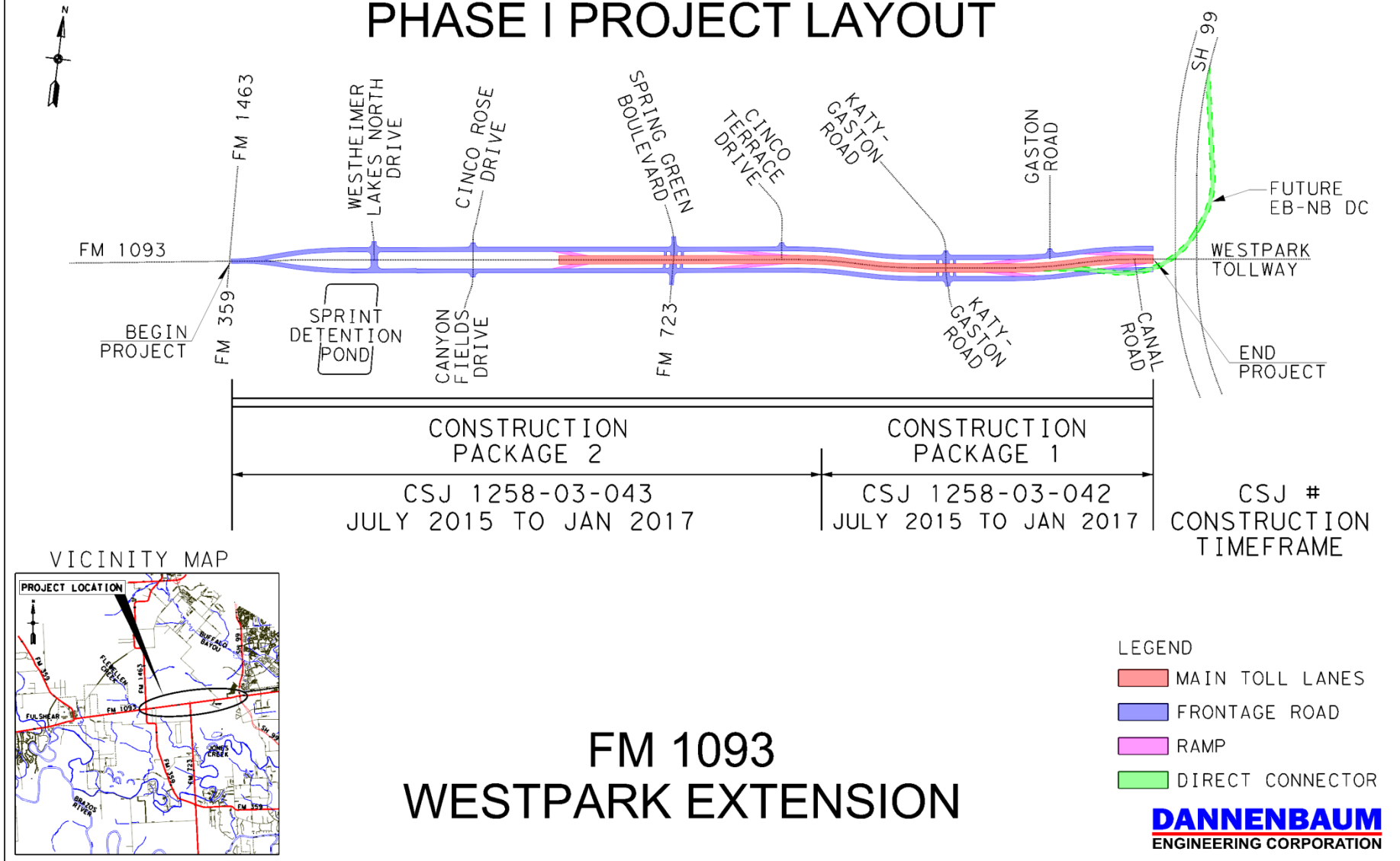
July 16, 2014

DANNENBAUM
ENGINEERING CORPORATION



PHASE I – FM 1463 TO SH 99

PHASE I PROJECT LAYOUT

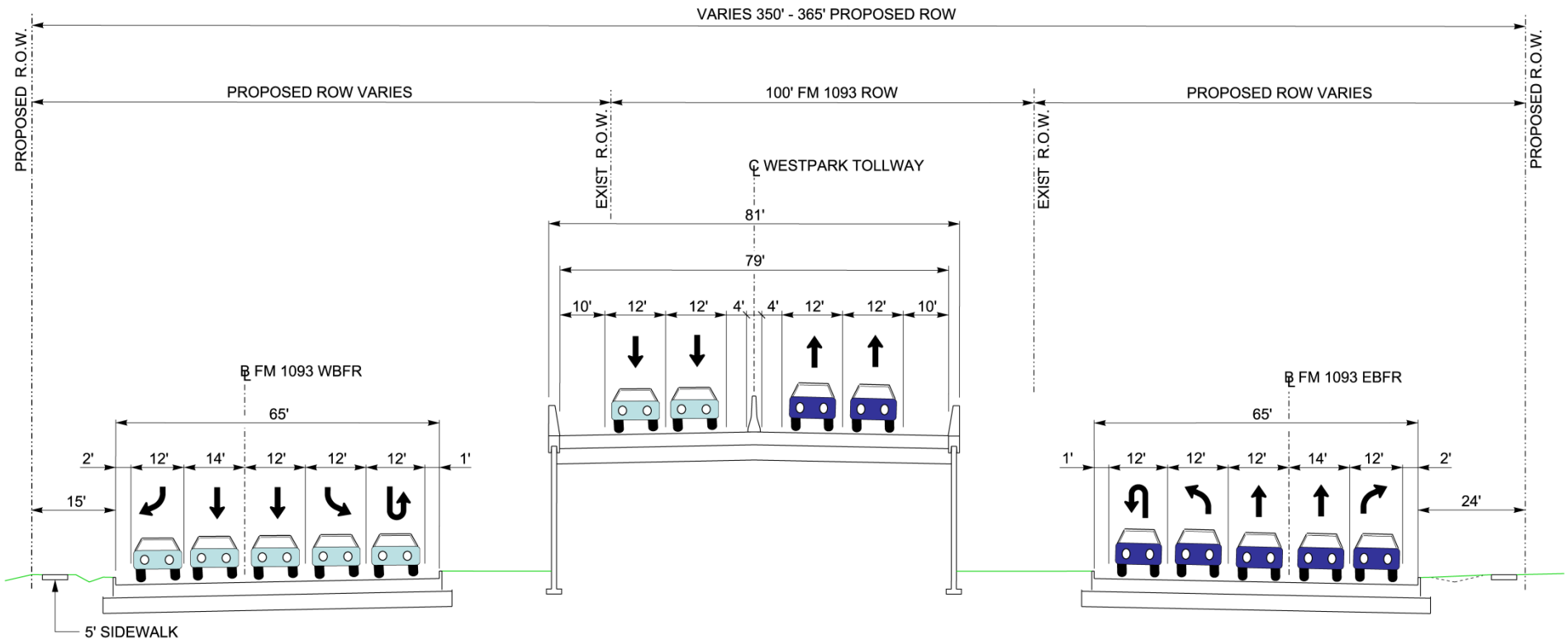


PHASE I – FM 1463 to SH 99

100' METRO ROW Acquisition

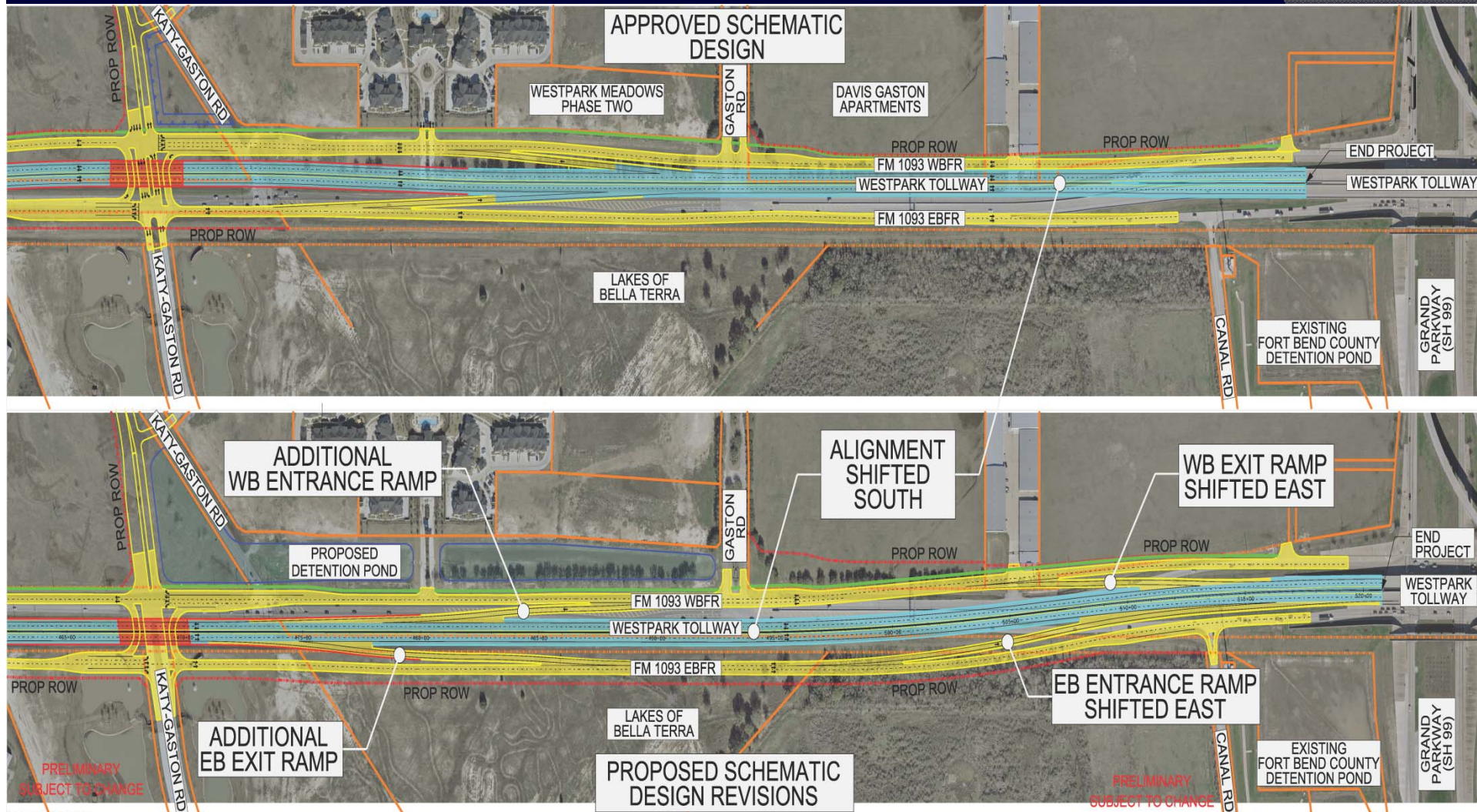
- Original Design utilized 50' of METRO ROW
- Revised Design utilizes 100' of METRO ROW
- Design Revisions provide opportunities to improve Project
- Current Development Schedule
 - Phase I Public Meeting: July 31st, 6 pm at Seven Lakes High School
 - EA Re-Evaluation Approval: January 2015
 - Complete Design: April 2015
 - Construction: July 2015 to January 2017

PHASE I – PROPOSED RETAINED FILL TYPICAL SECTION



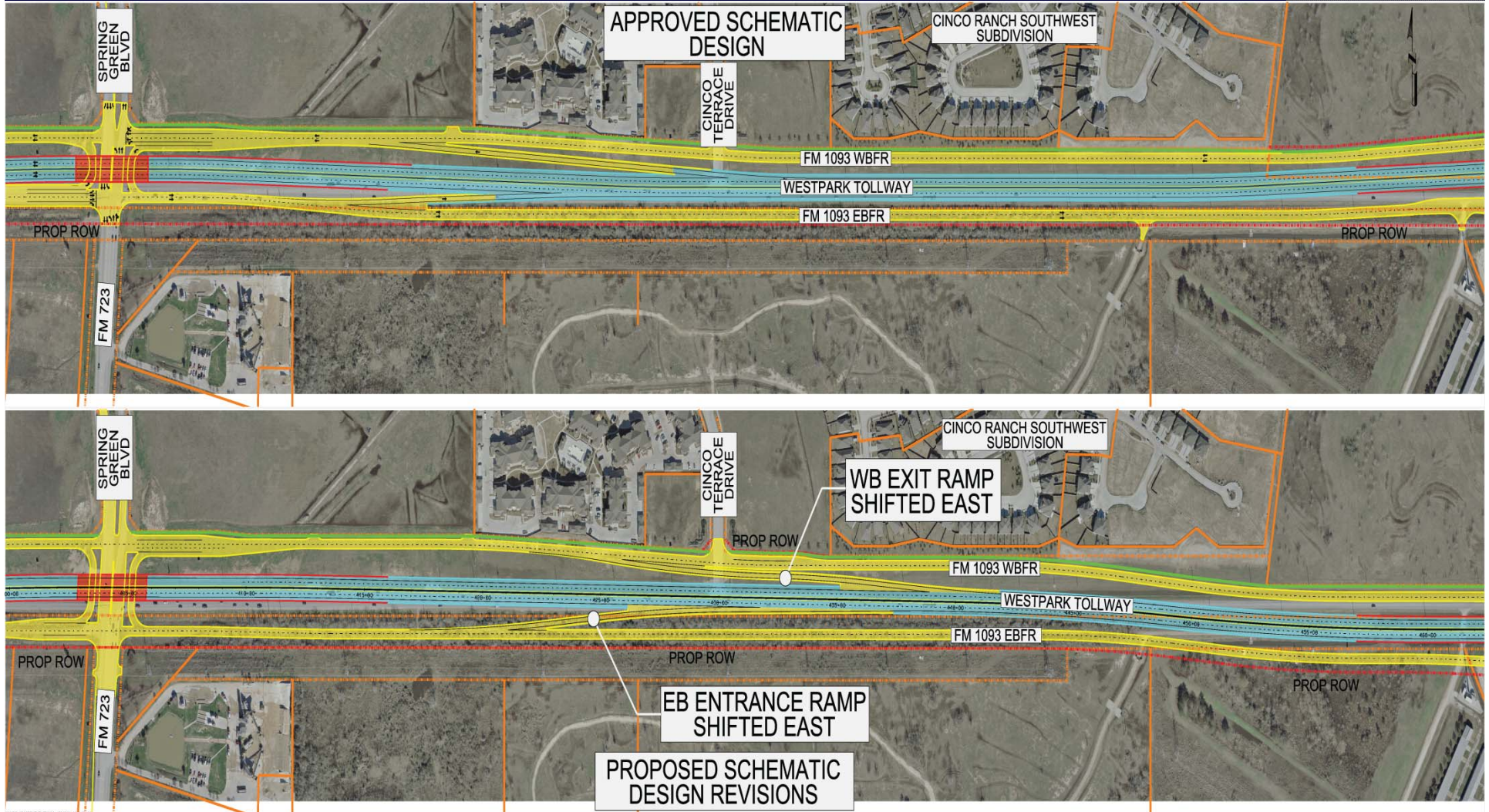
WEST OF SPRING GREEN TO SH 99

PHASE I – DESIGN CHANGES



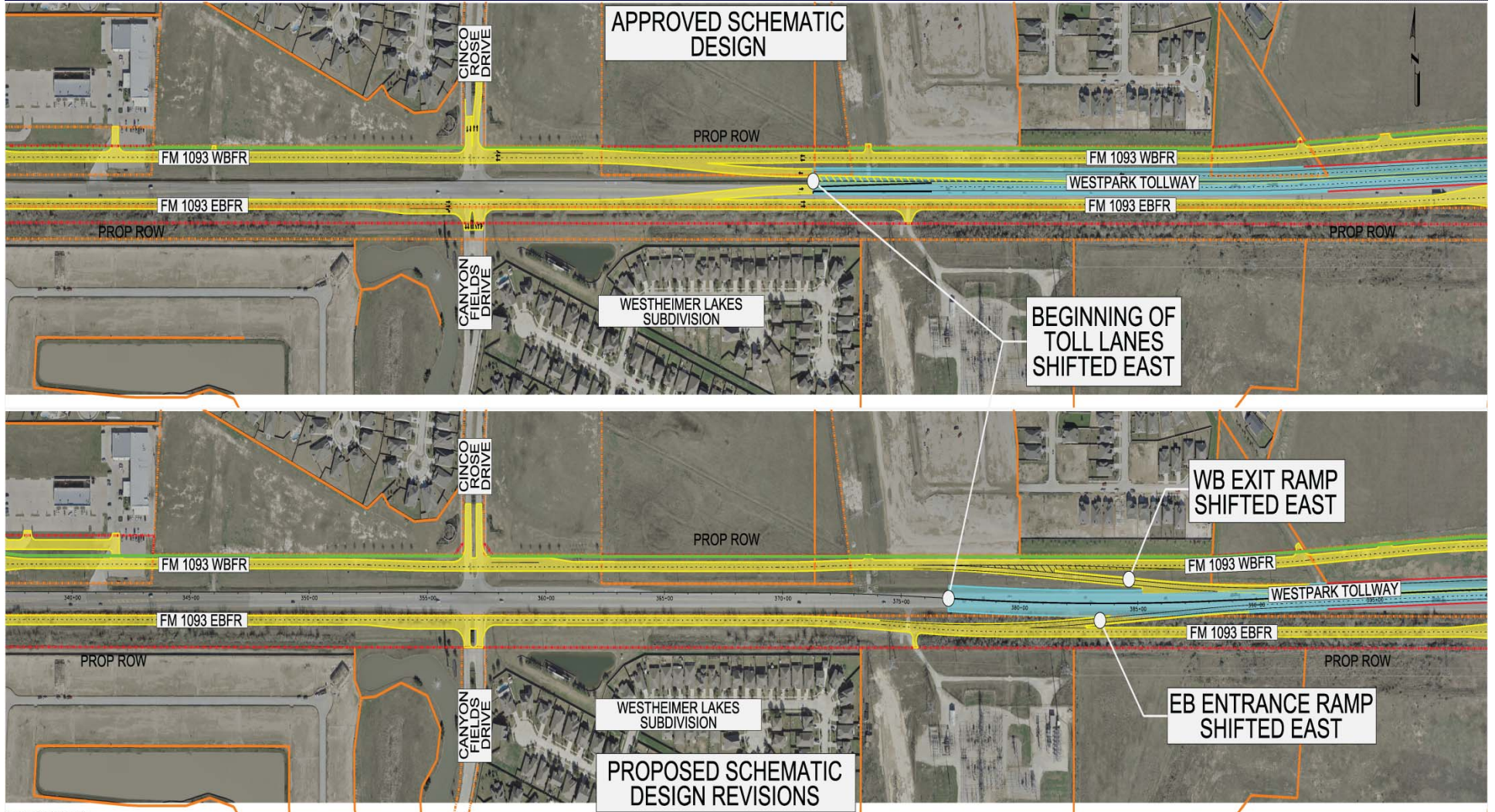
KATY-GASTON TO SH 99

PHASE I – DESIGN CHANGES



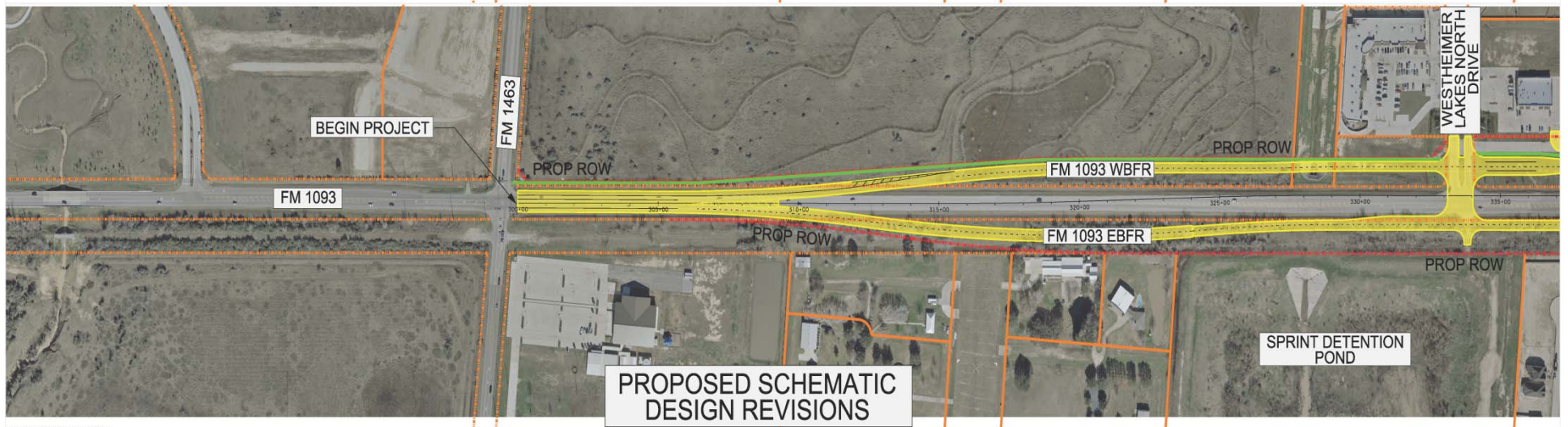
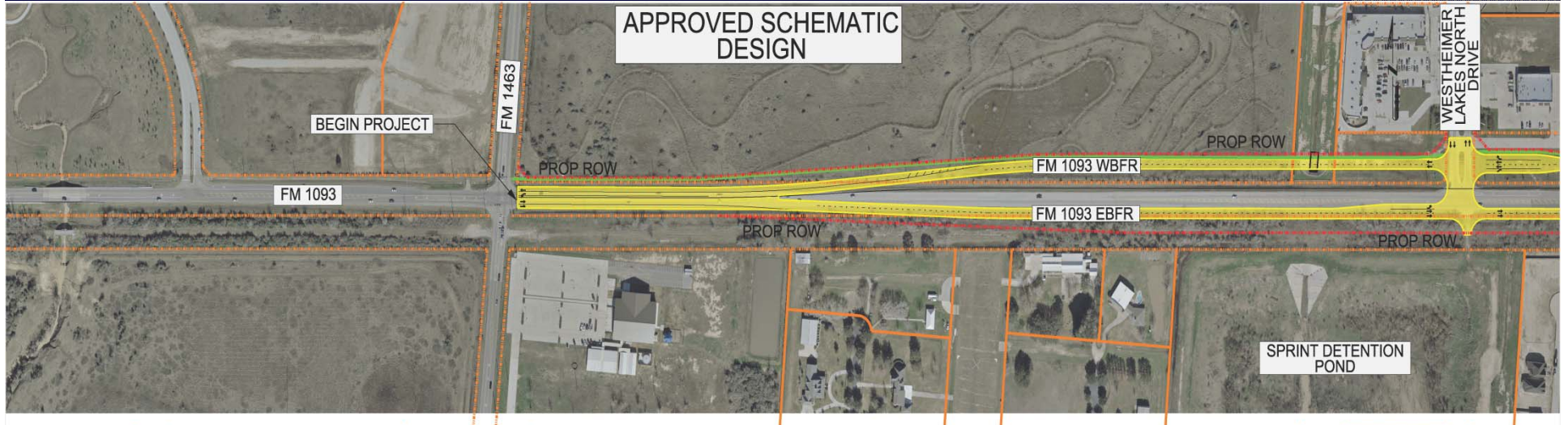
SPRING GREEN TO KATY-GASTON

PHASE I – DESIGN CHANGES



WESTHEIMER LAKES TO SPRING GREEN

PHASE I – DESIGN CHANGES



BEGIN PROJECT TO WESTHEIMER LAKES

FM 1093 WESTPARK EXTENSION

QUESTIONS ?