



FORT BEND COUNTY ENGINEERING

Fort Bend County, Texas

Richard W. Stolleis, P.E.
County Engineer

June 3, 2013

Commissioner James Patterson
Fort Bend County Precinct 4
12919 Dairy Ashford Road
Sugar Land, Texas 77478

RE: Traffic Control Plan for Grand Parkway (SH 99) Northbound Access Road (North of West Bellfort & South of Peek Road)

Dear Commissioner Patterson:

Fort Bend County Engineering recommends approval of the traffic control plan for Grand Parkway Northbound Access Road.

This roadway was constructed by Municipal Utility District 194 and transferred to Fort Bend County for maintenance.

If there are no objections to the plan, a public hearing will be scheduled on the next available Commissioner's Court agenda. A copy of the traffic control plan is attached for your review. If you should have any questions, please give me a call.

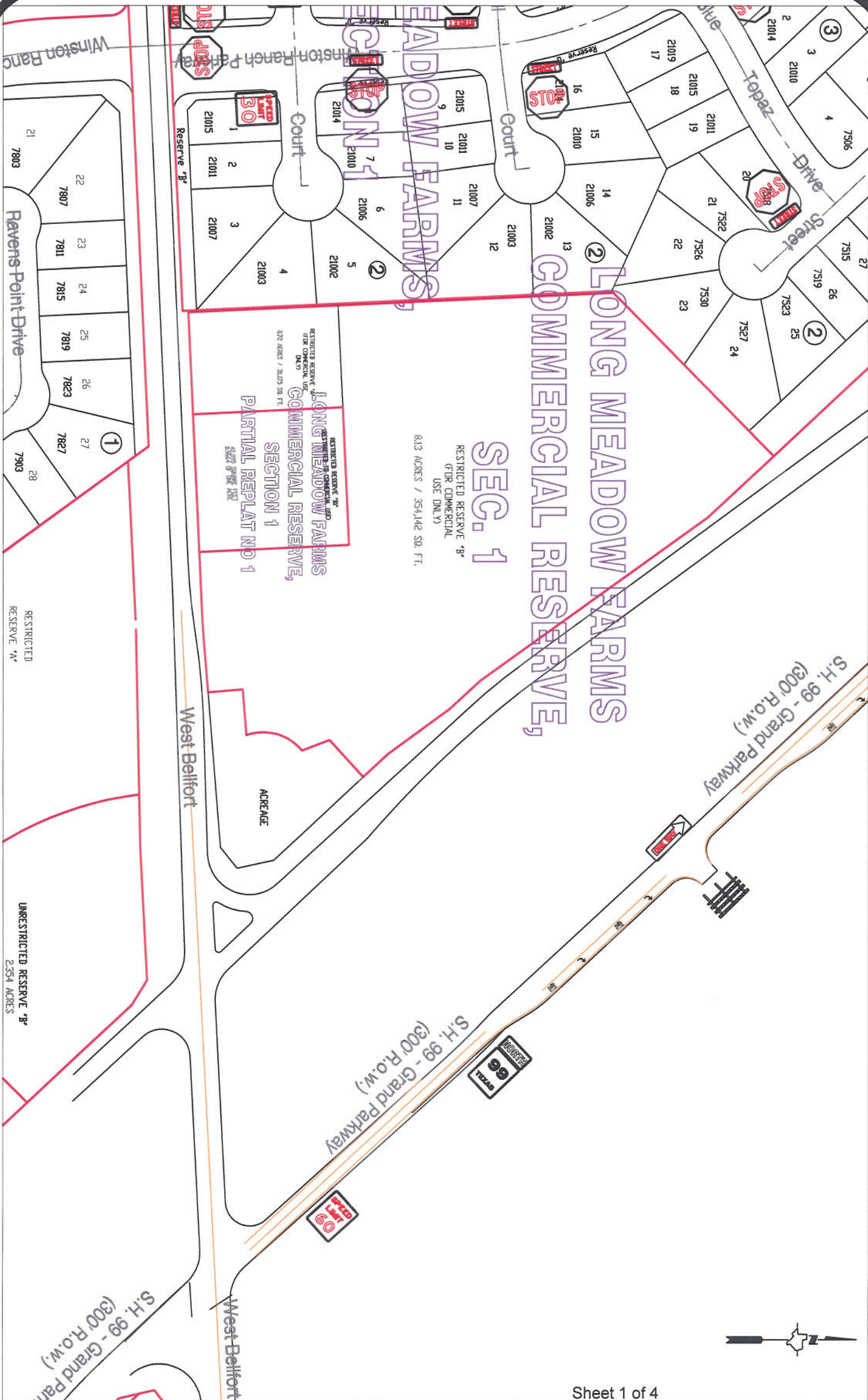
Sincerely,

A handwritten signature in cursive script that reads "Steven L. Evans".

Steven L. Evans
Assistant to County Engineer

SLE/mjs

cc: Judge Robert E. Hebert, County Judge
Marc Grant - FBC Road & Bridge
Marc Grant - Signage Department
Mr. Alex Khoshakhlagh, P. E., Costello, Inc., FBC MUD 194 Engineer
File



Sheet 1 of 4

Note:

The purpose of this traffic control plan is to establish traffic control for the Northbound Access Road Along Grand Parkway.

Drawn By: L. Brdecka

Date: 6-3-13

Approved By: Steven L. Evans

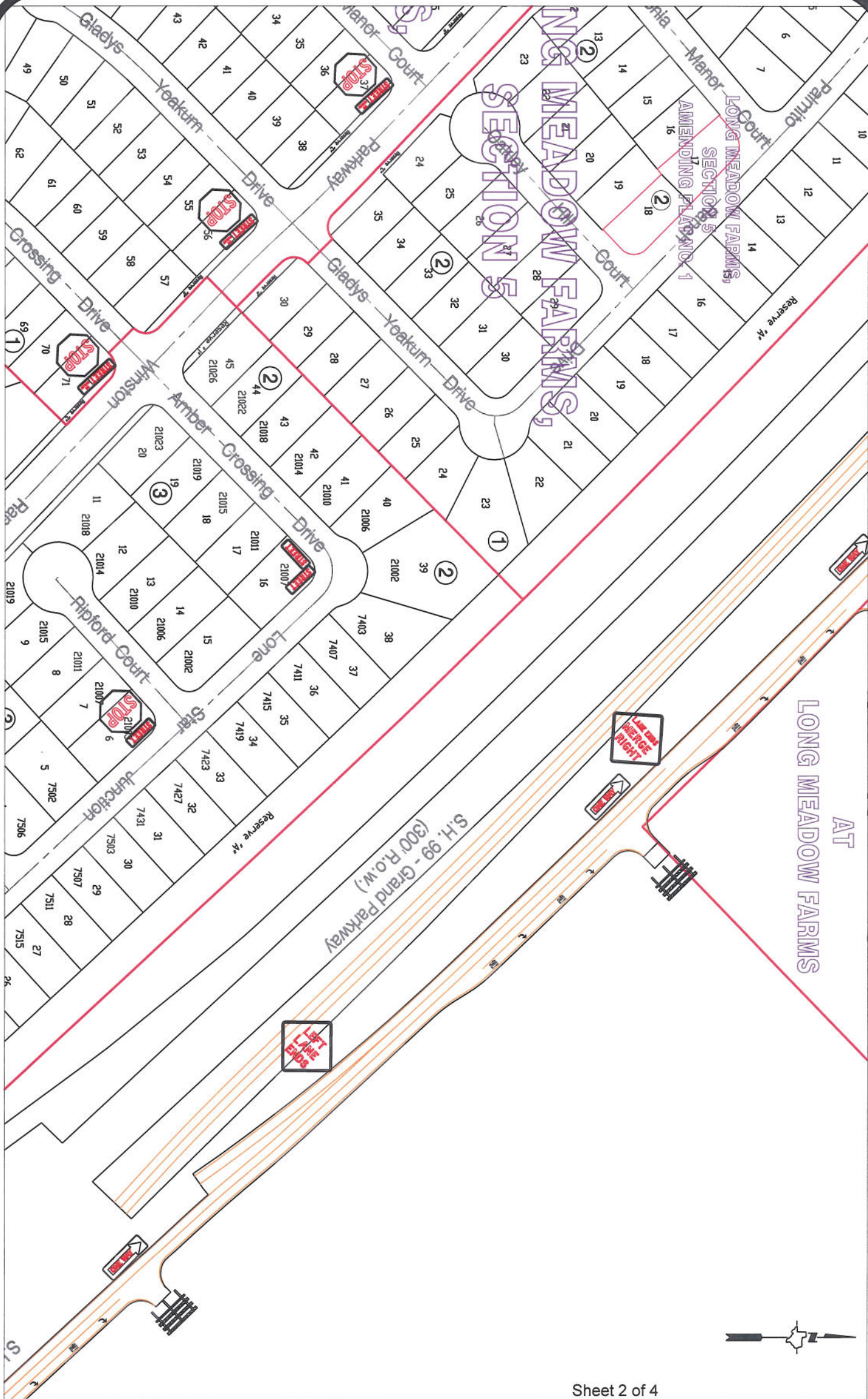
Date: 6-3-13

Scale

N.T.S.

**Northbound Access Road Along
Grand Parkway
Control Map and Traffic Sign Layout**

Fort Bend County Engineering Dept.
1124 Blume Road
Rosenberg, Texas 77471



Sheet 2 of 4

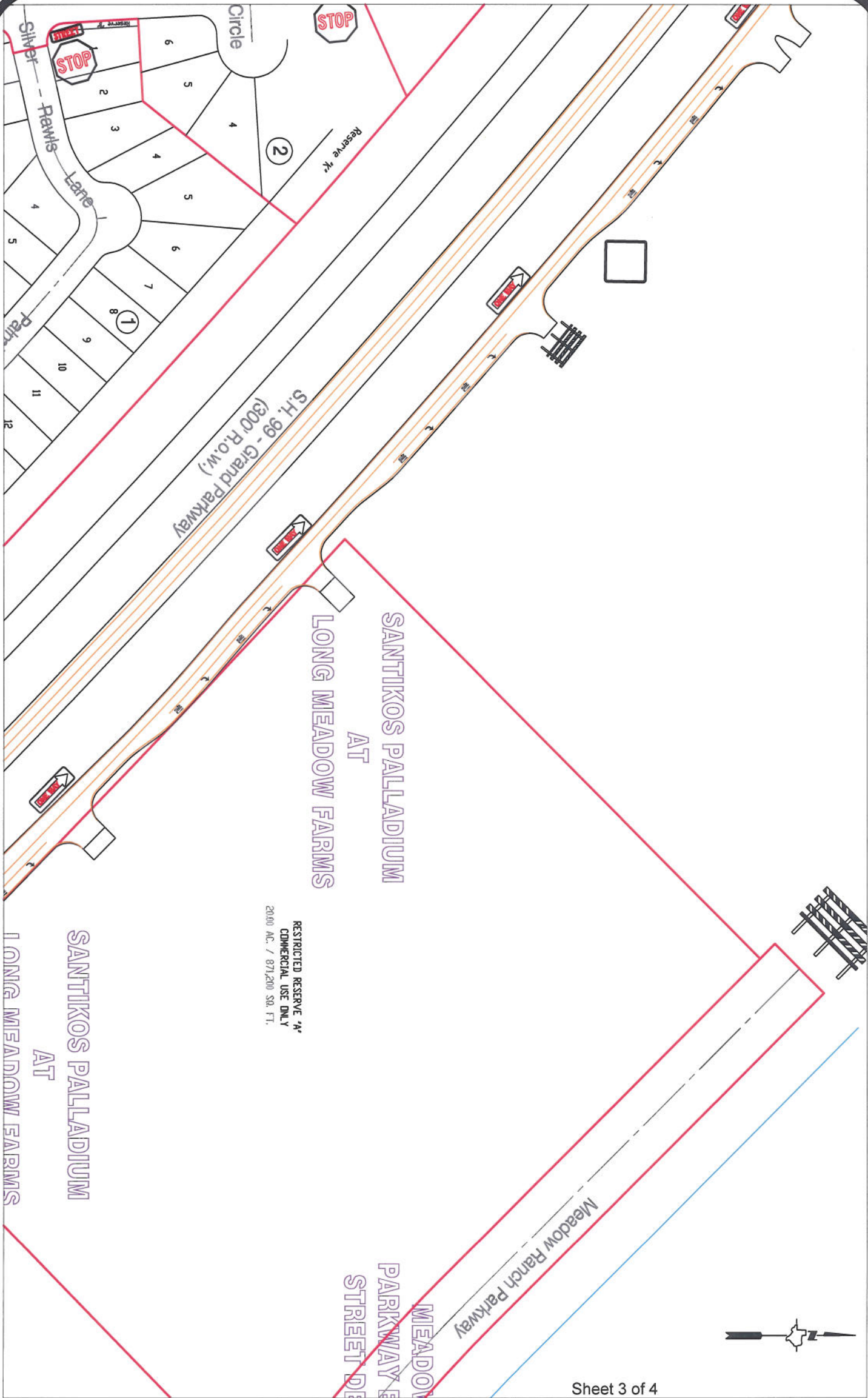
Note:

The purpose of this traffic control plan is to establish traffic control for the Northbound Access Road Along Grand Parkway.

Drawn By: L. Brdecka
Date: 6-3-13
Approved By: Steven L. Evans
Date: 6-3-13
Scale
N.T.S.

Northbound Access Road Along
Grand Parkway
Control Map and Traffic Sign Layout

Fort Bend County Engineering Dept.
1124 Blume Road
Rosenberg, Texas 77471



Note:

The purpose of this traffic control plan is to establish traffic control for the Northbound Access Road Along Grand Parkway.

Drawn By: L. Brdecka

Date: 6-3-13

Approved By: Steven L. Evans

Date: 6-3-13

Scale

N.T.S.

**Northbound Access Road Along Grand Parkway
Control Map and Traffic Sign Layout**

Fort Bend County Engineering Dept.
1124 Blume Road
Rosenberg, Texas 77471

