

5B

FORT BEND COUNTY ENGINEERING

Fort Bend County, Texas

Richard W. Stolleis, P.E.
County Engineer

September 13, 2012

Commissioner W. A. "Andy" Meyers
Fort Bend County Precinct 3
22333 Grand Corner Drive
Katy, Texas 77494

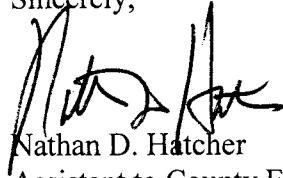
RE: Traffic/Safety Study for Katy ISD - Griffin Elementary (Fry Road)

Dear Commissioner:

Fort Bend County Engineering has completed and recommends approval of the traffic control plans for Griffin Elementary School to extend the school zone on to Courtney Manor Lane. The public hearing date for acceptance of the plan will be scheduled on the next available Commissioner's Court agenda.

A copy of the traffic control plan is attached for your review. If you should have any questions, please give me a call.

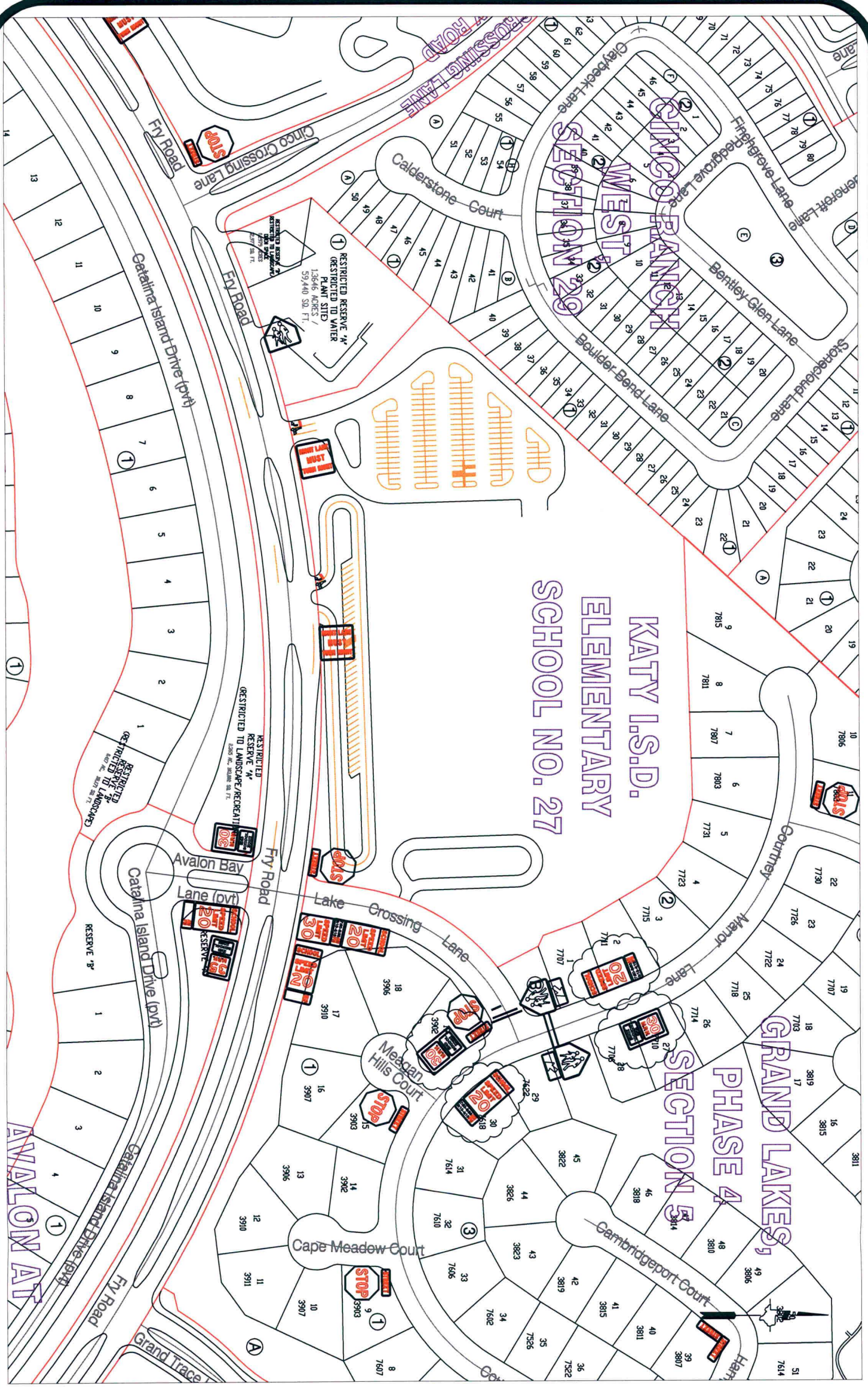
Sincerely,



Nathan D. Hatcher
Assistant to County Engineer

NDH/mjs

cc: Judge Robert E. Hebert, County Judge
Marc Grant - FBC Road & Bridge
Marc Grant - Signage Department
Mr. John C. Bremer, Katy Ind. School District Police Dept., 20370 Franz Road,
Katy, Texas 77449, johncbremer@katyisd.org
File



Note:

The purpose of this traffic control plan is to revise traffic control for Katy I.S.D. Elementary School No. 27 (Griffin Elementary) as indicated on the drawing.

Drawn By: L. Brdecka
 Date: 9-13-12
 Approved By: Steven L. Evans
 Date: 9-13-12
 Scale
 1" = 200'-0"

**Revised Katy I.S.D. Elementary
 School No. 27 STD
 Control Map and
 Traffic Sign Layout**
 Fort Bend County Engineering Dept.
 1124 Blume Road
 Rosenberg, Texas 77471