

17PP

September 28, 2012

Commissioner Andy Meyers, Precinct 3
Fort Bend County
22333 Grand Corner Drive
Katy, Texas 77494

Mr. Ron Drachenberg
1124-52 Blume Road
Rosenberg, Texas 77471



RECEIVED

10/2/2012

23501 Cinco Ranch Blvd.
Suite A-250
Katy, Texas 77494
(281) 579-0340
Fax (281) 579-8212
landplan@krga.com

RE: Katy-Flewellen Road Street Name Change

Dear Commissioner Meyers and Mr. Drachenberg,

Kerry R. Gilbert & Assoc., Inc. on behalf of CH-B Pine Mill, LLC, requests to change the street name of Katy-Flewellen Road in the location noted on the attached exhibit. Originally, Katy-Flewellen was proposed to extend south of Roesner Road through the Pine Mill Ranch Subdivision and Cinco Ranch Southwest Subdivision. However, over the years, the alignment of Katy-Flewellen Road has not been maintained. Single-family development has occurred that prevents the extension of Katy-Flewellen Road, south of Roesner Road.

Currently within the Pine Mill Ranch Subdivision, two segments of Katy-Flewellen Road have been recorded with the Fort Bend County Clerks Office. One segment is north of Pine Mill Drive and the second segment is south of Pine Mill Drive, as depicted on the attached exhibit. Since neither segment connects with the existing Katy-Flewellen Road north of Roesner Road, we are requesting to change the street name of these two segments to Winding Point Lane. This will prevent any confusion that could occur with having the same street name in different locations.

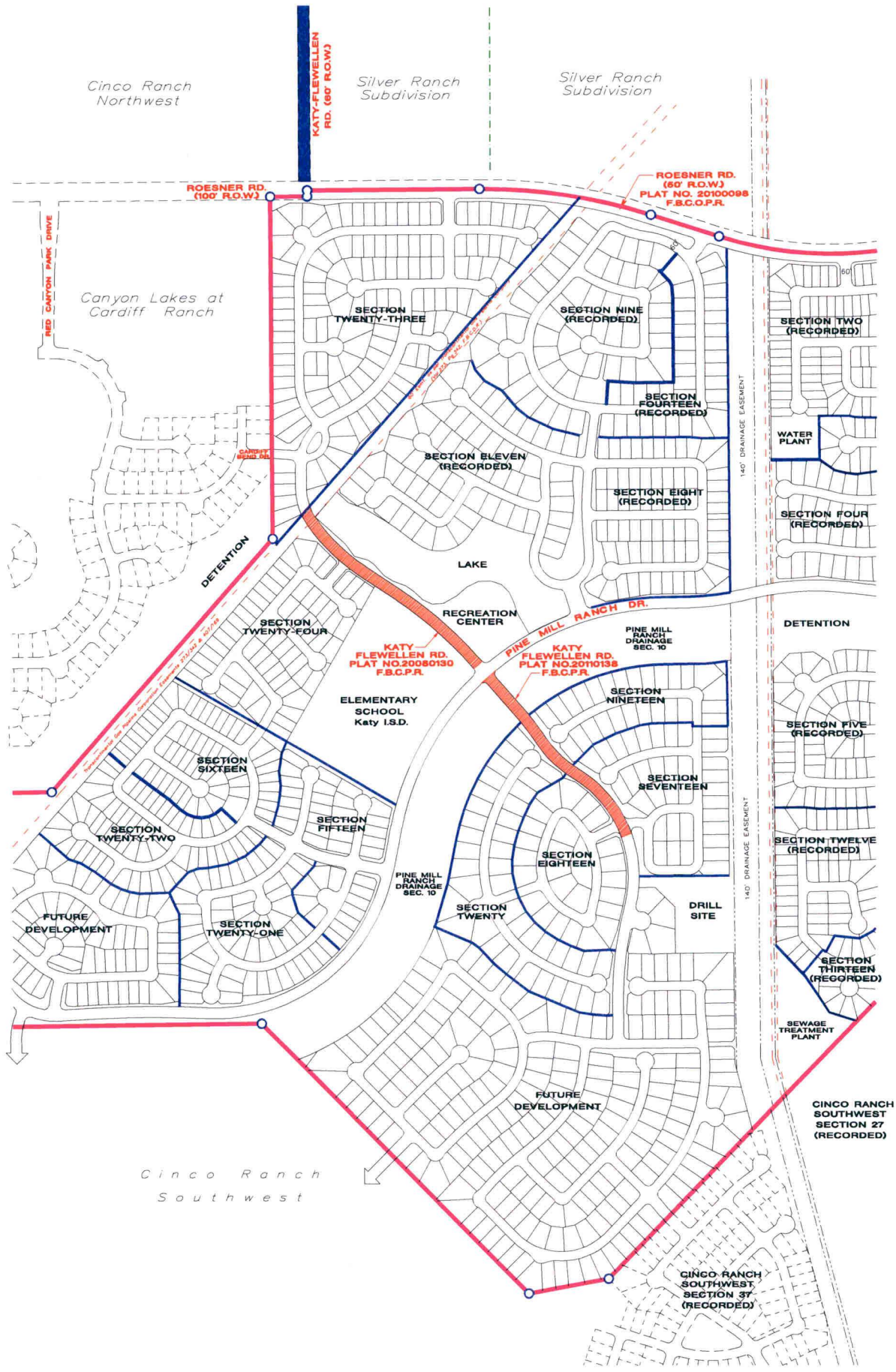
Please call me if you need any further information to process our request to the change the street name of Katy-Flewellen Road to Winding Point Lane south of Roesner Road.

Sincerely,

Christy B. Smidt
Associate

cc: Micheal Kim, CH-B Pine Mill, LLC.
Nathan Hatcher, Asst. County Engineer

Enclosure



 **KATY FLEWELLEN RD. (NAME REMAINS)**

 **WINDING POINT LN. (NEW NAME)**

an exhibit for
PINE MILL RANCH
 prepared for
CH-B Pine Mill LLC

KERRY R. GILBERT & ASSOCIATES, INC. Land Planning Consultants

23501 Cinco Ranch Blvd.
 Suite A-250
 Katy, Texas 77494
 (281)579-0340

SCALE: 0 150 300 600

SEPTEMBER 27, 2012
 KGA# 04601B

THIS DRAWING IS A PICTORIAL REPRESENTATION FOR PRESENTATION PURPOSES ONLY AND IS SUBJECT TO CHANGE. FURTHER, SAID DRAWING IS A SCANNED IMAGE ONLY AND IS NOT FOR COMPUTATION OR CONSTRUCTION PURPOSES. THIS DRAWING MAY OR MAY NOT INCORPORATE INFORMATION AND/OR DATA PROVIDED TO KERRY R. GILBERT & ASSOCIATES, INC. BY OTHER CONSULTANTS RELATIVE TO ENGINEERING AND DRAINAGE, FLOOD PLANS, AND ENVIRONMENTAL ISSUES AND SHOULD NOT BE RELIED UPON FOR ANY LOCATION AND CHARACTER OF THE FACILITIES SHOWN ON THIS MAP ARE INTENDED. ADDITIONALLY, NO WARRANTY IS MADE TO THE ACCURACY OF THE INFORMATION CONTAINED HEREIN.
 ©2008-2009 KERRY R. GILBERT & ASSOCIATES, INC. ALL RIGHTS RESERVED

