

5B2

FORT BEND COUNTY ENGINEERING

Fort Bend County, Texas

Richard W. Stolleis, P.E.
County Engineer

August 6, 2012

Commissioner Grady Prestage
Fort Bend County Precinct 2
3030 Texas Parkway, Suite 213
Missouri City, Texas 77459

**RE: Cambridge Falls, Section 2 - Traffic Control Plan
Cambridge Falls, Section 3**

Dear Commissioner:

Fort Bend County Engineering has completed and recommends approval of the traffic control plans for the above referenced subdivision. The public hearing date for acceptance of the plans is being scheduled.

A copy of the traffic control plan is attached for your review. If you should have any questions, please give me a call.

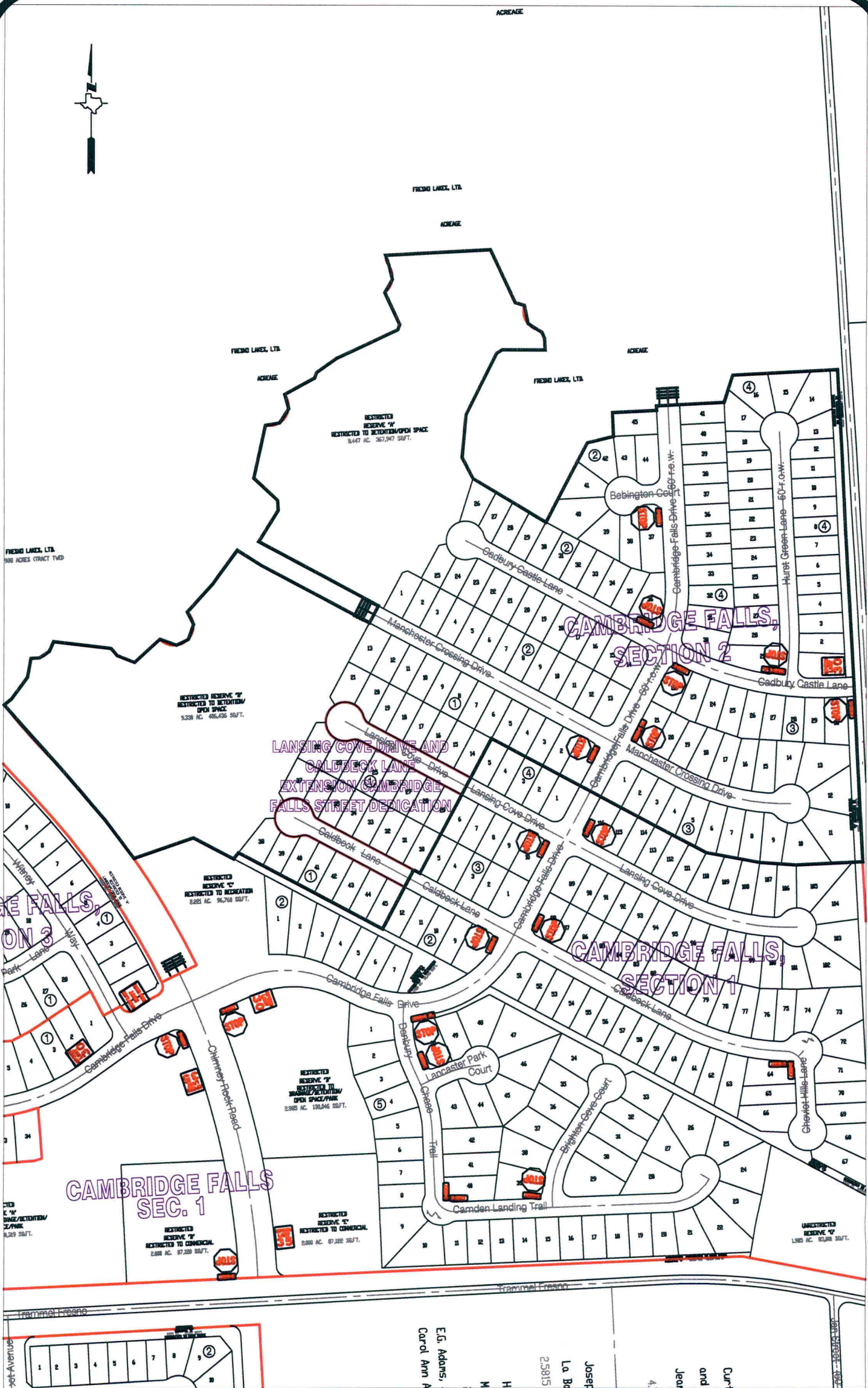
Sincerely,



DeWayne O. Davis, P.E.
Engineer III

DOD/mjs

cc: Judge Robert E. Hebert, County Judge
Marc Grant - FBC Road & Bridge
Marc Grant - Signage Department
File



Note:

The purpose of this traffic control plan is to establish traffic control for Cambridge Falls, Section 2.

Drawn By: L. Brdecka
Date: 7-27-12
Approved By: DeWayne Davis, P.E.
Date: 7-27-12
Scale
1" = 300'-0"

**Cambridge Falls, Section 2
Control Map and
Traffic Sign Layout**

Fort Bend County Engineering Dept.
1124 Blume Road
Rosenberg, Texas 77471

RES
RES
RESTRICTED TO
8.447 AC.

FRESNO LAKES, LTD.
99,988 ACRES (TRACT TMD)

RESTRICTED RESERVE "B"
RESTRICTED TO DETENTION/
OPEN SPACE
9.330 AC. 406,436 SQ.FT.

RESTRICTED
RESERVE "C"
RESTRICTED TO RECREATION
2,221 AC. 96,760 SQ.FT.

RESTRICTED
RESERVE "D"
RESTRICTED TO
DRAINAGE/DETENTION/
OPEN SPACE/PARK
2,985 AC. 130,046 SQ.FT.

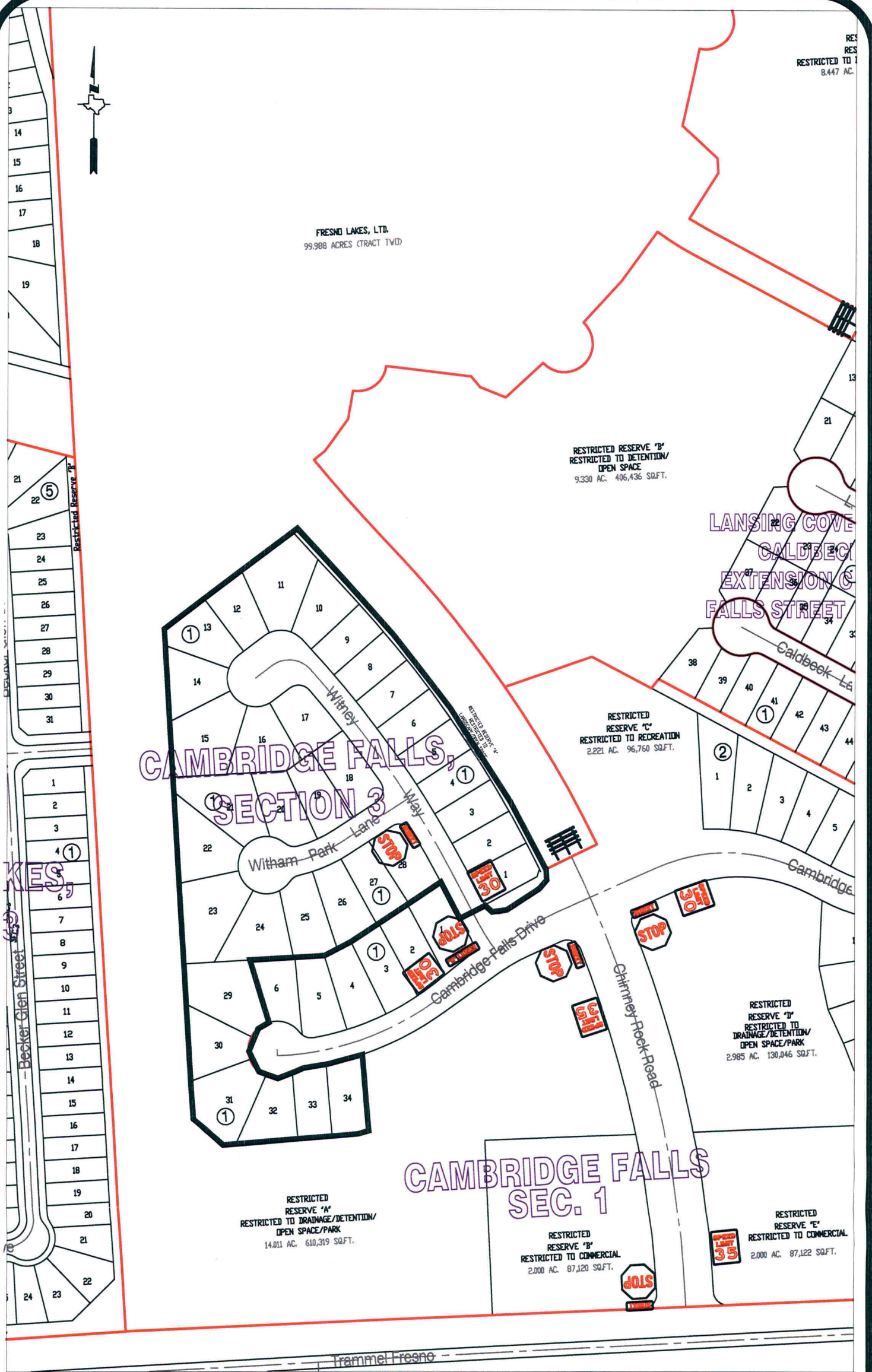
RESTRICTED
RESERVE "A"
RESTRICTED TO DRAINAGE/DETENTION/
OPEN SPACE/PARK
14,011 AC. 610,319 SQ.FT.

RESTRICTED
RESERVE "B"
RESTRICTED TO COMMERCIAL
2,000 AC. 87,120 SQ.FT.

RESTRICTED
RESERVE "E"
RESTRICTED TO COMMERCIAL
2,000 AC. 87,122 SQ.FT.

CAMBRIDGE FALLS, SECTION 3

CAMBRIDGE FALLS SEC. 1



Note:

The purpose of this traffic control plan is to establish traffic control for Cambridge Falls, Section 3.

Drawn By: L. Brdecka
 Date: 7-31-12
 Approved By: DeWayne Davis, P.E.
 Date: 7-31-12
 Scale
 1" = 200'-0"

**Cambridge Falls, Section 3
 Control Map and
 Traffic Sign Layout**

Fort Bend County Engineering Dept.
 1124 Blume Road
 Rosenberg, Texas 77471

FORT BEND COUNTY ENGINEERING
Fort Bend County, Texas

Richard W. Stolleis, P.E.
County Engineer

August 6, 2012

Commissioner W. A. "Andy" Meyers
Fort Bend County Precinct 3
22333 Grand Corner Drive
Katy, Texas 77494

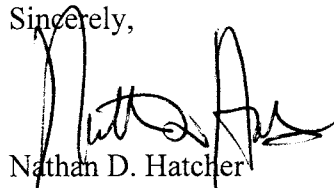
RE: Pine Mill Ranch, Section 5 - Traffic Control Plan
Pine Mill Ranch, Section 9
Pine Mill Ranch, Section 14

Dear Commissioner:

Fort Bend County Engineering has completed and recommends approval of the traffic control plans for the above referenced subdivisions. The public hearing date for acceptance of the plans is being scheduled.

A copy of the traffic control plans is attached for your review. If you should have any questions, please give me a call.

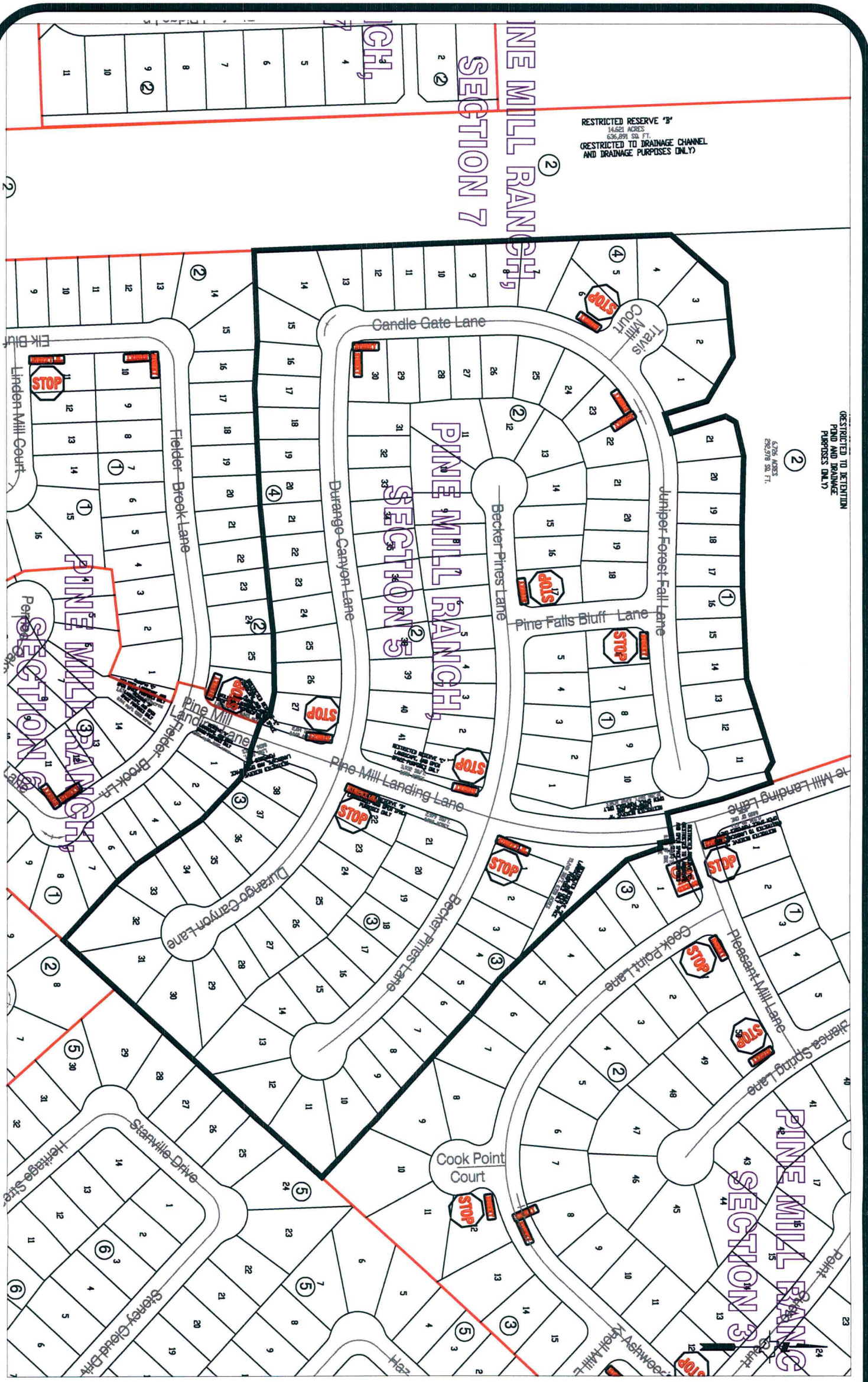
Sincerely,



Nathan D. Hatcher
Assistant to County Engineer

NDH/mjs

cc: Judge Robert E. Hebert, County Judge
Marc Grant - FBC Road & Bridge
Marc Grant - Signage Department
File



RESTRICTED RESERVE "B"
 14.621 ACRES
 636,891 SQ. FT.
 (RESTRICTED TO DRAINAGE CHANNEL
 AND DRAINAGE PURPOSES ONLY)

(2)
 RESTRICTED TO DETENTION
 POND AND DRAINAGE
 PURPOSES ONLY

(2)
 5.794 ACRES
 252,278 SQ. FT.

Note:

The purpose of this traffic control plan is to establish traffic control for Pine Mill Ranch, Section 5.

Drawn By: L. Brdecka
 Date: 7-27-12
 Approved By: Nathan Hatcher
 Date: 7-27-12
 Scale
 1" = 200'-0"

**Pine Mill Ranch, Section 5
 Control Map and
 Traffic Sign Layout**

Fort Bend County Engineering Dept.
 1124 Blume Road
 Rosenberg, Texas 77471



Note:

The purpose of this traffic control plan is to establish traffic control for Pine Mill Ranch, Section 9.

Drawn By: L. Brdecka
 Date: 7-27-12
 Approved By: Nathan Hatcher
 Date: 7-27-12
 Scale
 1" = 200'-0"

**Pine Mill Ranch, Section 9
 Control Map and
 Traffic Sign Layout**

Fort Bend County Engineering Dept.
 1124 Blume Road
 Rosenberg, Texas 77471



Note:

The purpose of this traffic control plan is to establish traffic control for Pine Mill Ranch, Section 14.

Drawn By: L. Brdecka

Date: 7-27-12

Approved By: Nathan Hatcher

Date: 7-27-12

Scale

1" = 200'-0"

**Pine Mill Ranch, Section 14
Control Map and
Traffic Sign Layout**

Fort Bend County Engineering Dept.
1124 Blume Road
Rosenberg, Texas 77471

5B4



FORT BEND COUNTY ENGINEERING
Fort Bend County, Texas

Richard W. Stolleis, P.E.
County Engineer

August 6, 2012

Commissioner W. A. "Andy" Meyers
Fort Bend County Precinct 3
22333 Grand Corner Drive
Katy, Texas 77494

**RE: Spring Green Boulevard Extension form Evans Mill Lane North to
Roesner Road STD - Traffic Control Plan**

Dear Commissioner:

Fort Bend County Engineering has completed and recommends approval of the traffic control plan for the above referenced subdivision. The public hearing date for acceptance of the plan is being scheduled.

A copy of the traffic control plans is attached for your review. If you should have any questions, please give me a call.

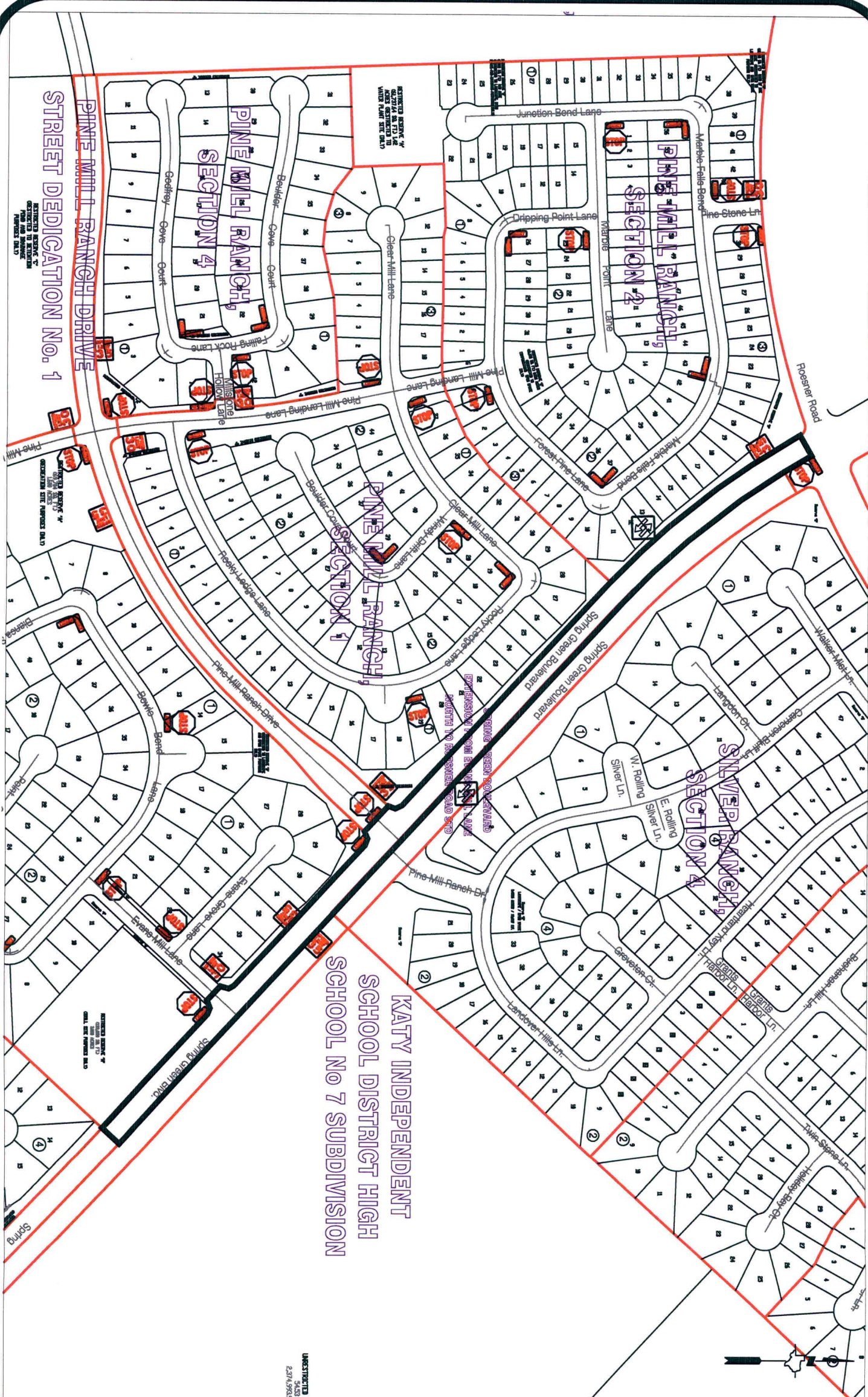
Sincerely,

A handwritten signature in black ink, appearing to read "Nathan D. Hatcher", is written over the typed name.

Nathan D. Hatcher
Assistant to County Engineer

NDH/mjs

cc: Judge Robert E. Hebert, County Judge
Marc Grant - FBC Road & Bridge
Marc Grant - Signage Department
File



KATY INDEPENDENT
SCHOOL DISTRICT HIGH
SCHOOL NO 7 SUBDIVISION

STREET DEDICATION NO. 1
PINE MILL RANCH DRIVE

Note:

The purpose of this traffic control plan is to establish traffic control for Spring Green Boulevard Extension from Evans Mill Lane North to Roesner Road STD.

Drawn By: L. Brdecka
 Date: 7-27-12
 Approved By: Nathan Hatcher
 Date: 7-27-12
 Scale
1" = 300'-0"

Spring Green Boulevard Extension
from Evans Mill Lane North to
Roesner Road STD
Control Map and Traffic Sign Layout

Fort Bend County Engineering Dept.
 1124 Blume Road
 Rosenberg, Texas 77471

UNRESTRICTED
 231/15523



FORT BEND COUNTY ENGINEERING
Fort Bend County, Texas

Richard W. Stolleis, P.E.
County Engineer

August 6, 2012

Commissioner W. A. "Andy" Meyers
Fort Bend County Precinct 3
22333 Grand Corner Drive
Katy, Texas 77494

RE: Canyon Lakes at Cardiff Ranch, Section 1 - Traffic Control Plan

Dear Commissioner:

Fort Bend County Engineering has completed and recommends approval of the traffic control plan for the above referenced subdivision. The public hearing date for acceptance of the plan is being scheduled.

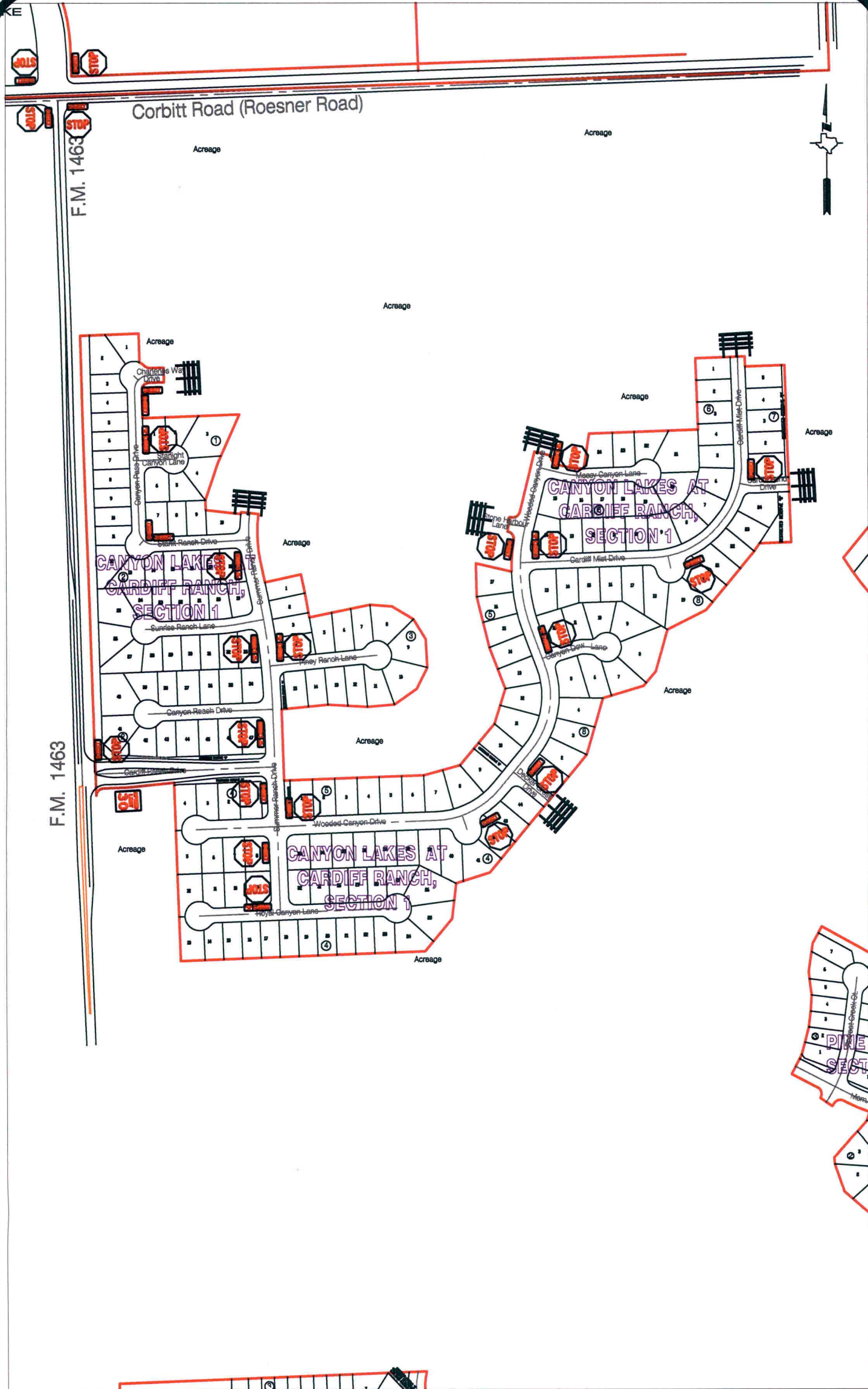
A copy of the traffic control plans is attached for your review. If you should have any questions, please give me a call.

Sincerely,

Nathan D. Hatcher
Assistant to County Engineer

NDH/mjs

cc: Judge Robert E. Hebert, County Judge
Marc Grant - FBC Road & Bridge
Marc Grant - Signage Department
File



Note:

The purpose of this traffic control plan is to establish traffic control for Canyon Lakes at Cardiff Ranch, Section 1.

Drawn By: L. Brdecka
 Date: 8-6-12
 Approved By: Nathan Hatcher
 Date: 8-6-12
 Scale
 1" = 400'-0"

**Canyon Lakes at Cardiff Ranch,
 Section 1
 Control Map and Traffic Sign Layout**

Fort Bend County Engineering Dept.
 1124 Blume Road
 Rosenberg, Texas 77471

FORT BEND COUNTY ENGINEERING

Fort Bend County, Texas

Richard W. Stolleis, P.E.
County Engineer

July 5, 2012

Commissioner W. A. "Andy" Meyers
Fort Bend County Precinct 3
22333 Grand Corner Drive
Katy, Texas 77494

RE: Traffic/Safety Study for Katy ISD, Roosevelt Alexander Elementary School at the intersection of Fry Road & Peek Road to install "No Right Turn on Red During School Hours" signs

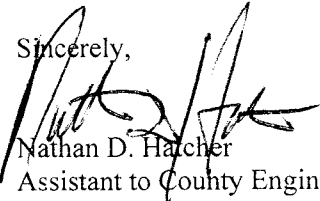
Dear Commissioner Meyers:

Fort Bend County Engineering Department has conducted a traffic study at the referenced intersection within the Grand Lakes subdivision. The primary purpose of this study was to investigate the need for additional traffic control devices adjacent to the Roosevelt Alexander Elementary School. The study has determined the efficiency and safety of the intersection could be improved by installing "No Right Turn on Red During School Hours" signs on the Peek Road and Fry Road approaches in each direction.

The installation of "No Right Turn on Red During School Hours" will help the traffic flow during school zone hours which are from 7:50 am to 8:50 am in the morning and 3:10 p.m. to 4:10 p.m. in the afternoon.

Fort Bend County Engineering has completed and recommends approval of the revised traffic control plan. The public hearing date for acceptance of the plan is being scheduled. If you should need any additional information, please contact me at 281-633-7515.

Sincerely,



Nathan D. Hatcher
Assistant to County Engineer

NDH/mjs

cc: Judge Robert E. Hebert, County Judge
Marc Grant - FBC Road & Bridge
Marc Grant - Signage Department
File

