

FORT BEND COUNTY ENGINEERING
Fort Bend County, Texas

Richard W. Stolleis, P.E.
County Engineer

July 2, 2012

Commissioner James Patterson
Fort Bend County Precinct 4
12919 Dairy Ashford Road
Sugar Land, Texas 77478

RE: West Bellfort -Traffic Control Plan
From: Eldridge Road (FM1876) to Harlem Road

Dear Commissioner:

Fort Bend County Engineering has completed and recommends approval of the traffic control plan for the above referenced mobility project. This traffic control plan reestablishes the speed limit from Eldridge Road through to Harlem Road at 40 mph. The public hearing date for acceptance of the plan is being scheduled.

A copy of the traffic control plan is attached for your review. If you should have any questions, please give me a call.

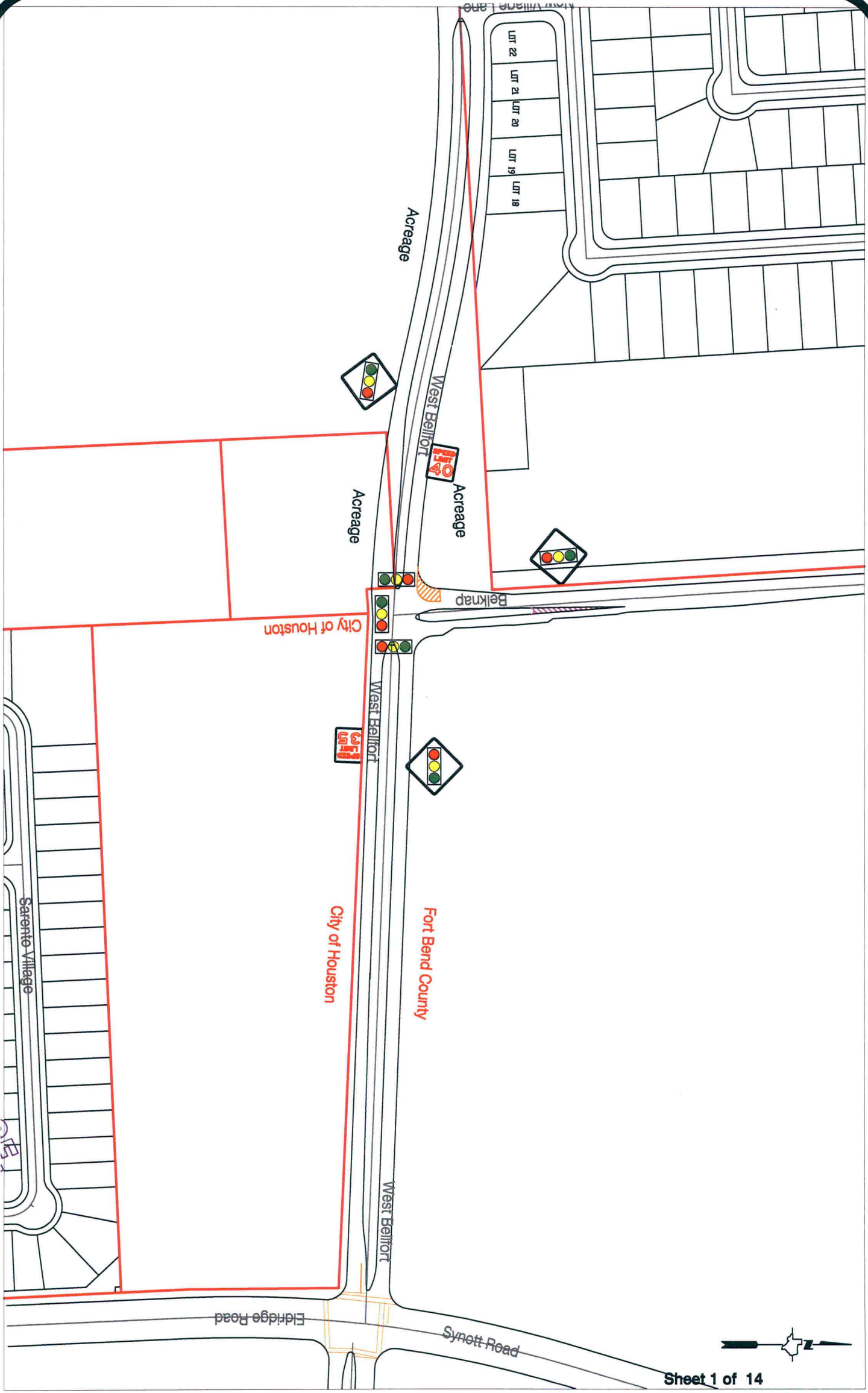
Sincerely,



Steven L. Evans
Assistant to County Engineer

SLE/mjs

cc: Judge Robert E. Hebert, County Judge
Marc Grant - FBC Road & Bridge
Marc Grant - Signage Department
File



Sheet 1 of 14

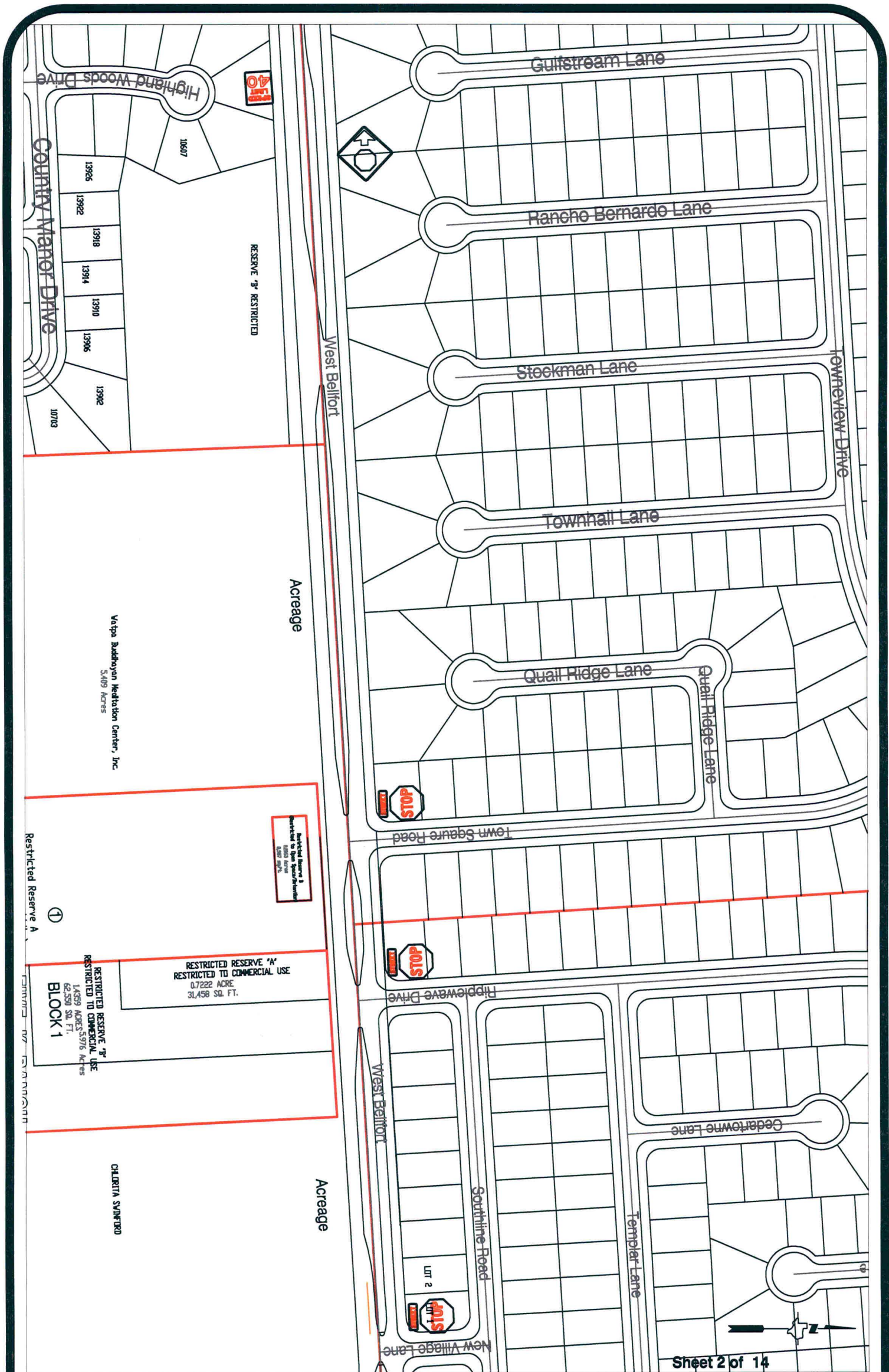
Note:

The purpose of this traffic control plan is to establish traffic control for West Bellfort from Eldridge to Harlem Road.

Drawn By: L. Brdecka
 Date: 6-27-12
 Approved By: Steven L. Evans
 Date: 6-27-12
 Scale
 1" = 200'-0"

**West Bellfort from Eldridge to Harlem Road
 Control Map and Traffic Sign Layout**

Fort Bend County Engineering Dept.
 1124 Blume Road
 Rosenberg, Texas 77471



Sheet 2 of 14

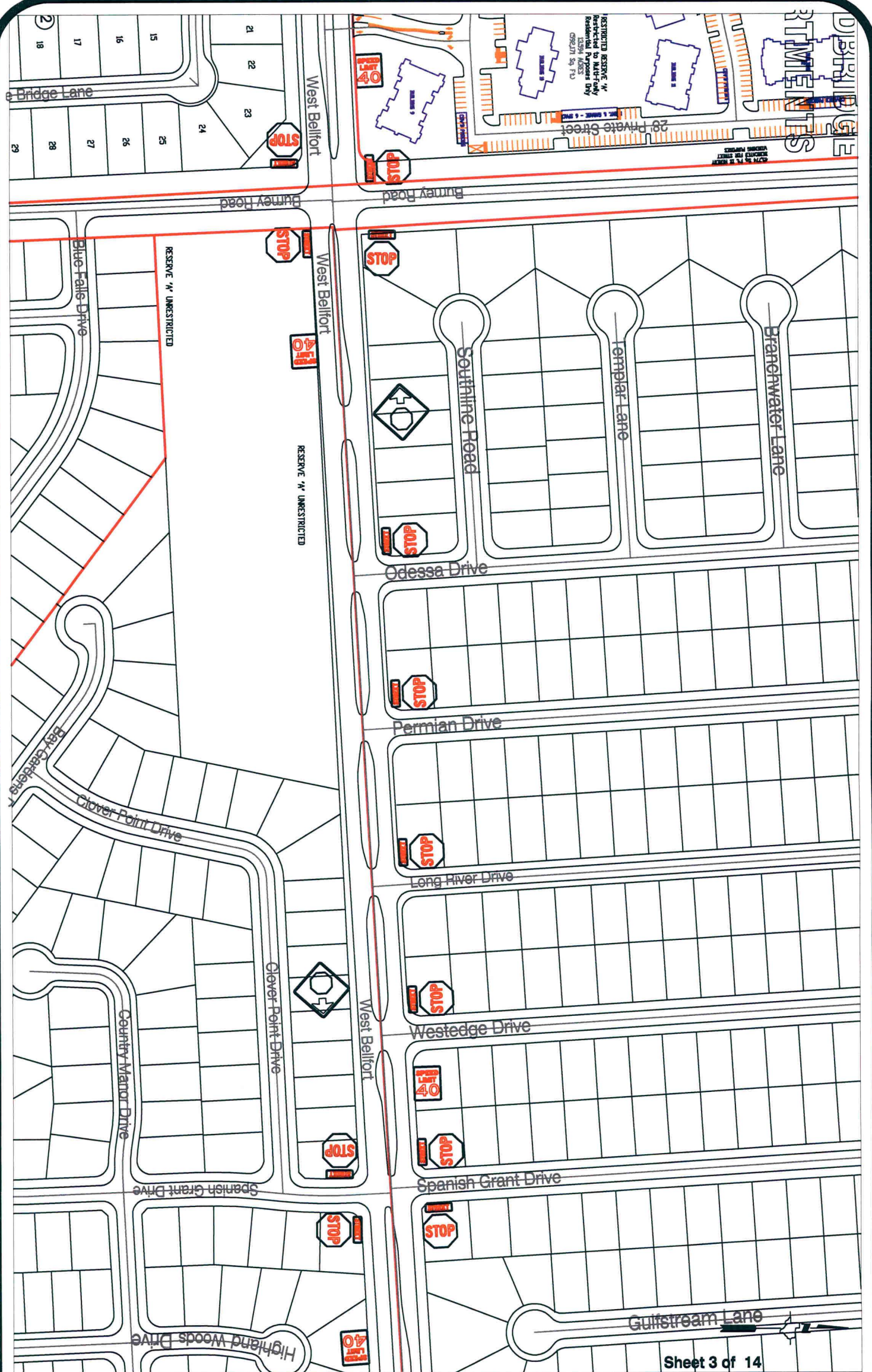
Note:

The purpose of this traffic control plan is to establish traffic control for West Bellfort from Eldridge to Harlem Road.

Drawn By: L. Brdecka
 Date: 6-27-12
 Approved By: Steven L. Evans
 Date: 6-27-12
 Scale
 1" = 200'-0"

**West Bellfort from Eldridge to Harlem Road
 Control Map and Traffic Sign Layout**

Fort Bend County Engineering Dept.
 1124 Blume Road
 Rosenberg, Texas 77471

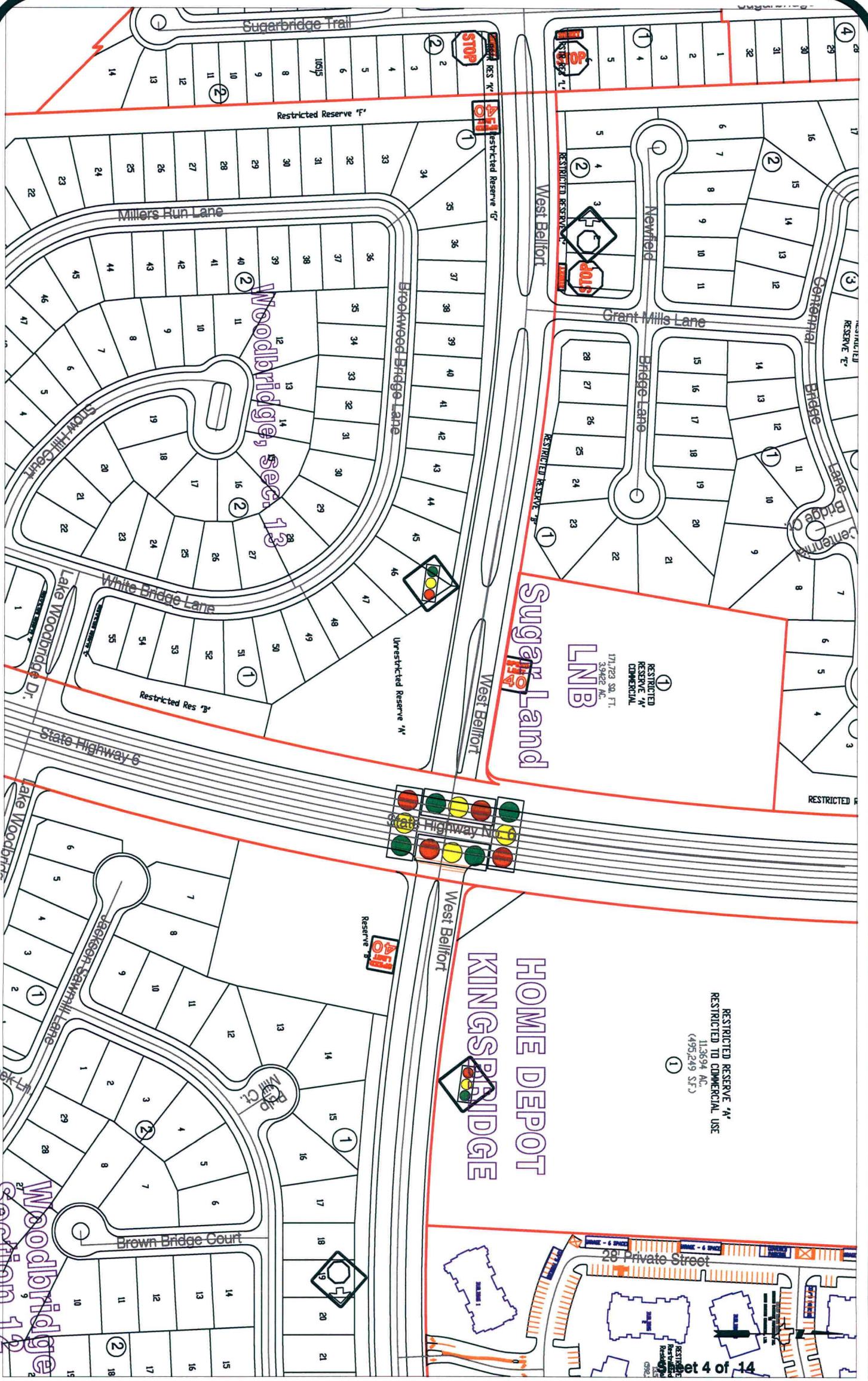


Sheet 3 of 14

Note:
 The purpose of this traffic control plan is to establish traffic control for West Bellfort from Eldridge to Harlem Road.

Drawn By: L. Brdecka
 Date: 6-27-12
 Approved By: Steven L. Evans
 Date: 6-27-12
 Scale
 1" = 200'-0"

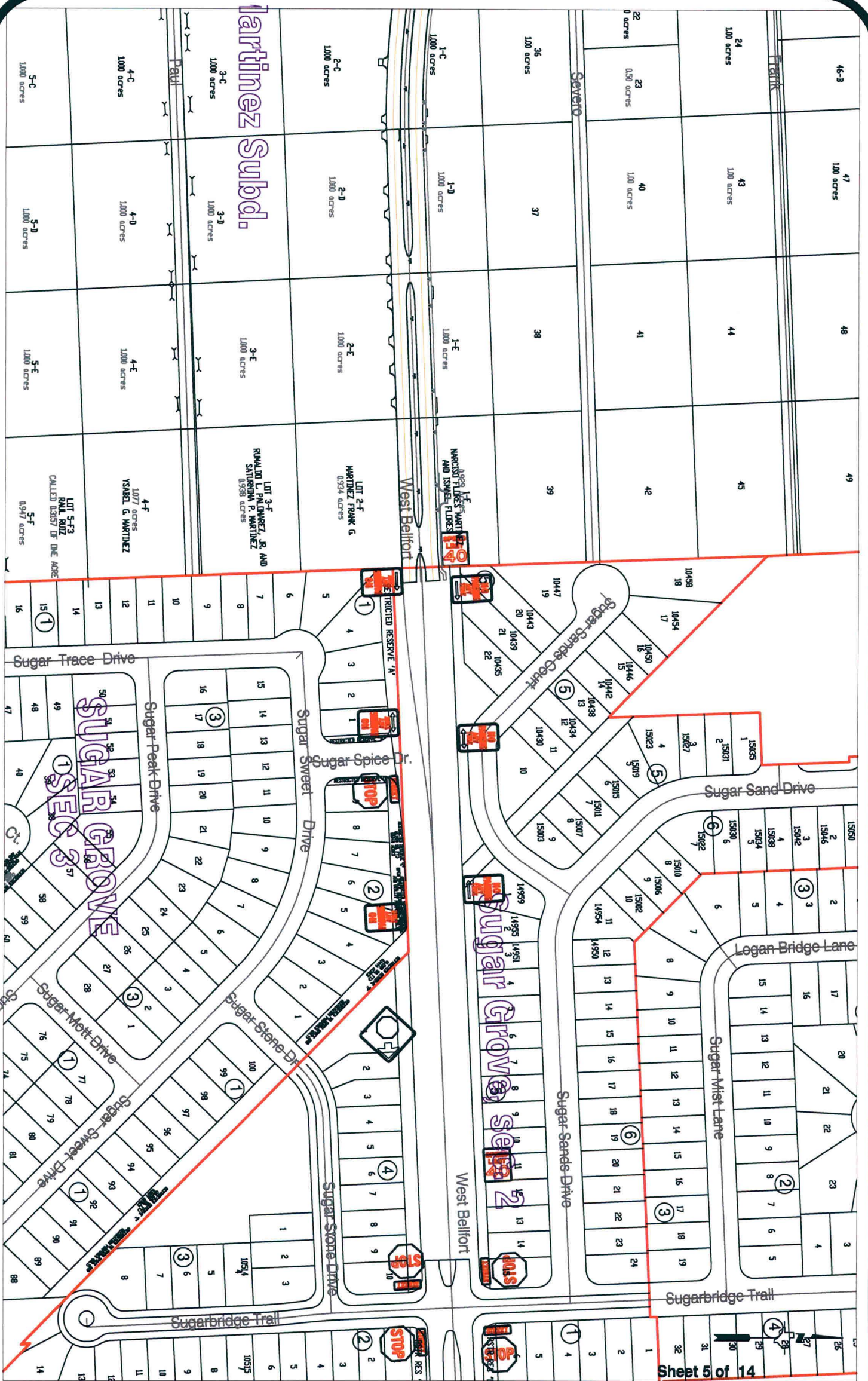
West Bellfort from Eldridge to Harlem Road
Control Map and Traffic Sign Layout
 Fort Bend County Engineering Dept.
 1124 Blume Road
 Rosenberg, Texas 77471



Note:
 The purpose of this traffic control plan is to establish traffic control for West Belfort from Eldridge to Harlem Road.

Drawn By: L. Brdecka
 Date: 6-27-12
 Approved By: Steven L. Evans
 Date: 6-27-12
 Scale
 1" = 200'-0"

West Belfort from Eldridge to Harlem Road
Control Map and Traffic Sign Layout
 Fort Bend County Engineering Dept.
 1124 Blume Road
 Rosenberg, Texas 77471



Note:

The purpose of this traffic control plan is to establish traffic control for West Bellfort from Eldridge to Harlem Road.

Drawn By: L. Brdecka
 Date: 6-27-12
 Approved By: Steven L. Evans
 Date: 6-27-12
 Scale
 1" = 200'-0"

**West Bellfort from Eldridge to Harlem Road
 Control Map and Traffic Sign Layout**

Fort Bend County Engineering Dept.
 1124 Blume Road
 Rosenberg, Texas 77471

SPRINT LANDFILL

SPRINT LANDFILL

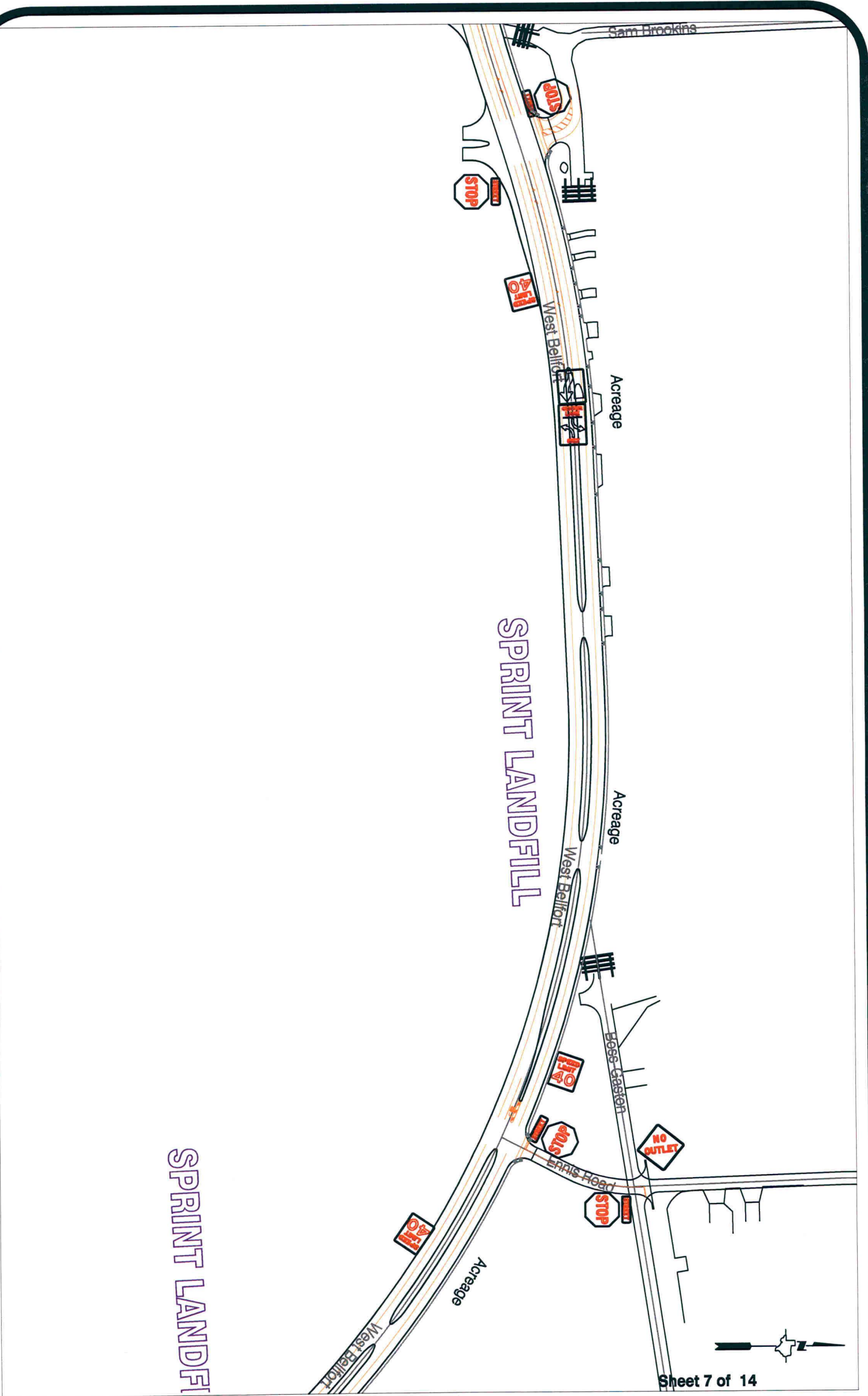


Sheet 6 of 14

Note:
 The purpose of this traffic control plan is to establish traffic control for West Belfort from Eldridge to Harlem Road.

Drawn By: L. Brdecka
 Date: 6-27-12
 Approved By: Steven L. Evans
 Date: 6-27-12
 Scale
 1" = 200'-0"

West Belfort from Eldridge to Harlem Road
Control Map and Traffic Sign Layout
 Fort Bend County Engineering Dept.
 1124 Blume Road
 Rosenberg, Texas 77471



Sheet 7 of 14

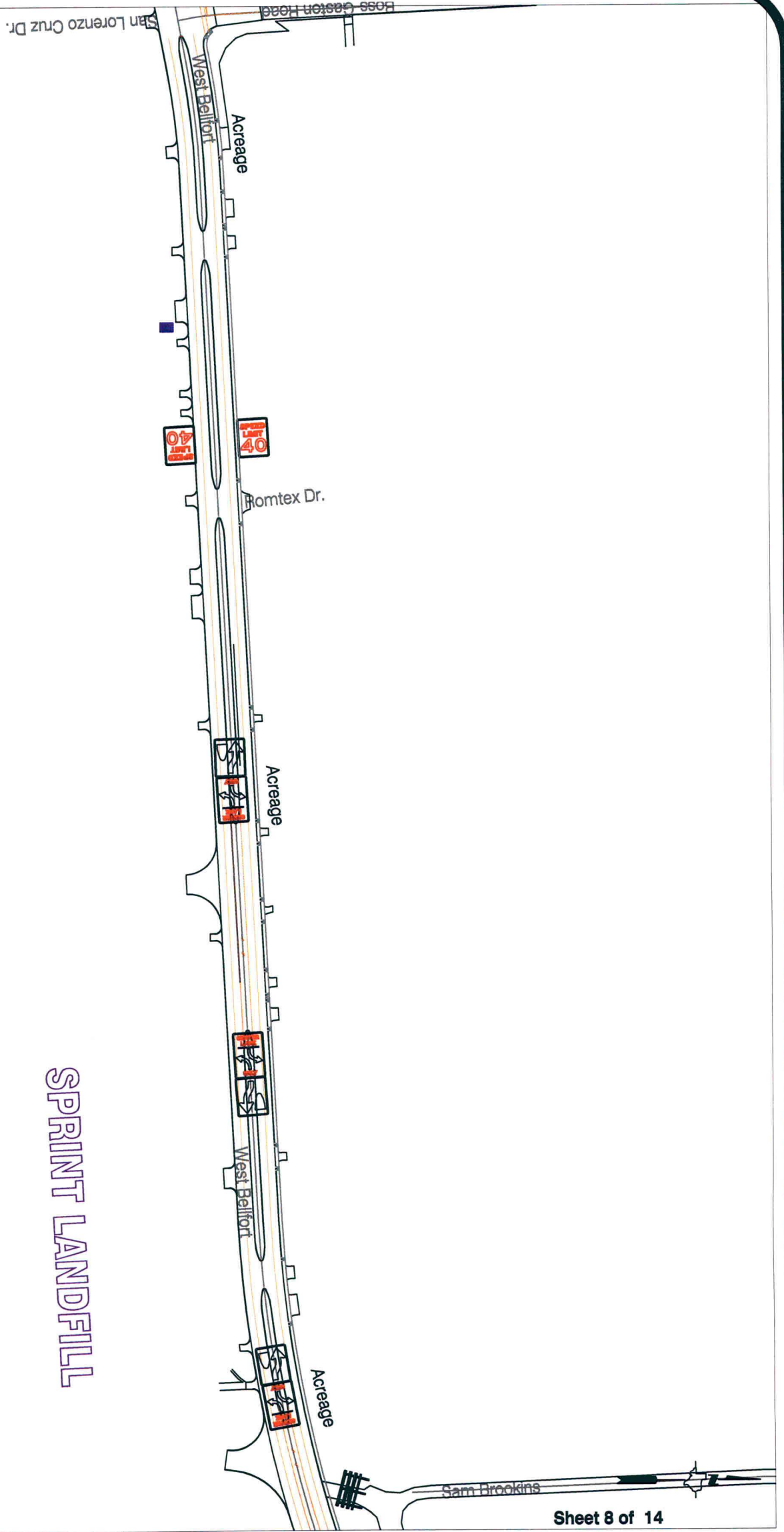
Note:

The purpose of this traffic control plan is to establish traffic control for West Belfort from Eldridge to Harlem Road.

Drawn By: L. Brdecka
 Date: 6-27-12
 Approved By: Steven L. Evans
 Date: 6-27-12
 Scale
 1" = 200'-0"

**West Belfort from Eldridge to Harlem Road
 Control Map and Traffic Sign Layout**

Fort Bend County Engineering Dept.
 1124 Blume Road
 Rosenberg, Texas 77471



SPRINT LANDFILL

Note:
 The purpose of this traffic control plan is to establish traffic control for West Bellfort from Eldridge to Harlem Road.

Drawn By: L. Brdecka
 Date: 6-27-12
 Approved By: Steven L. Evans
 Date: 6-27-12
 Scale
 1" = 200'-0"

**West Bellfort from Eldridge to Harlem Road
 Control Map and Traffic Sign Layout**
 Fort Bend County Engineering Dept.
 1124 Blume Road
 Rosenberg, Texas 77471

ALIANA,
SECTION 2
T NO. 1

ALIANA,
Section 3



Sheet 9 of 14

Note:

The purpose of this traffic control plan is to establish traffic control for West Bellfort from Eldridge to Harlem Road.

Drawn By: L. Brdecka

Date: 6-27-12

Approved By: Steven L. Evans

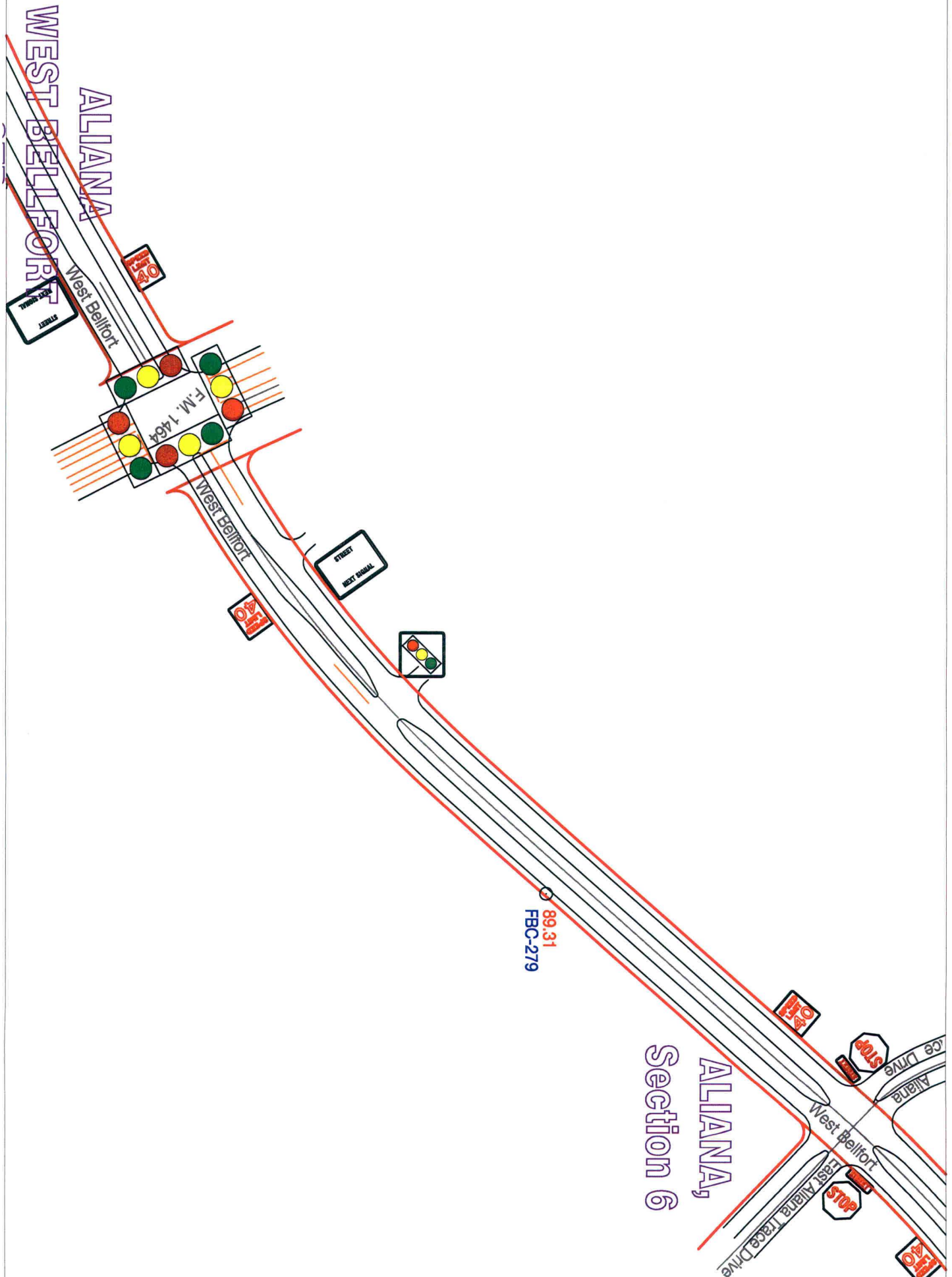
Date: 6-27-12

Scale

1" = 200'-0"

**West Bellfort from Eldridge to Harlem Road
Control Map and Traffic Sign Layout**

Fort Bend County Engineering Dept.
1124 Blume Road
Rosenberg, Texas 77471



Sheet 10 of 14

Note:

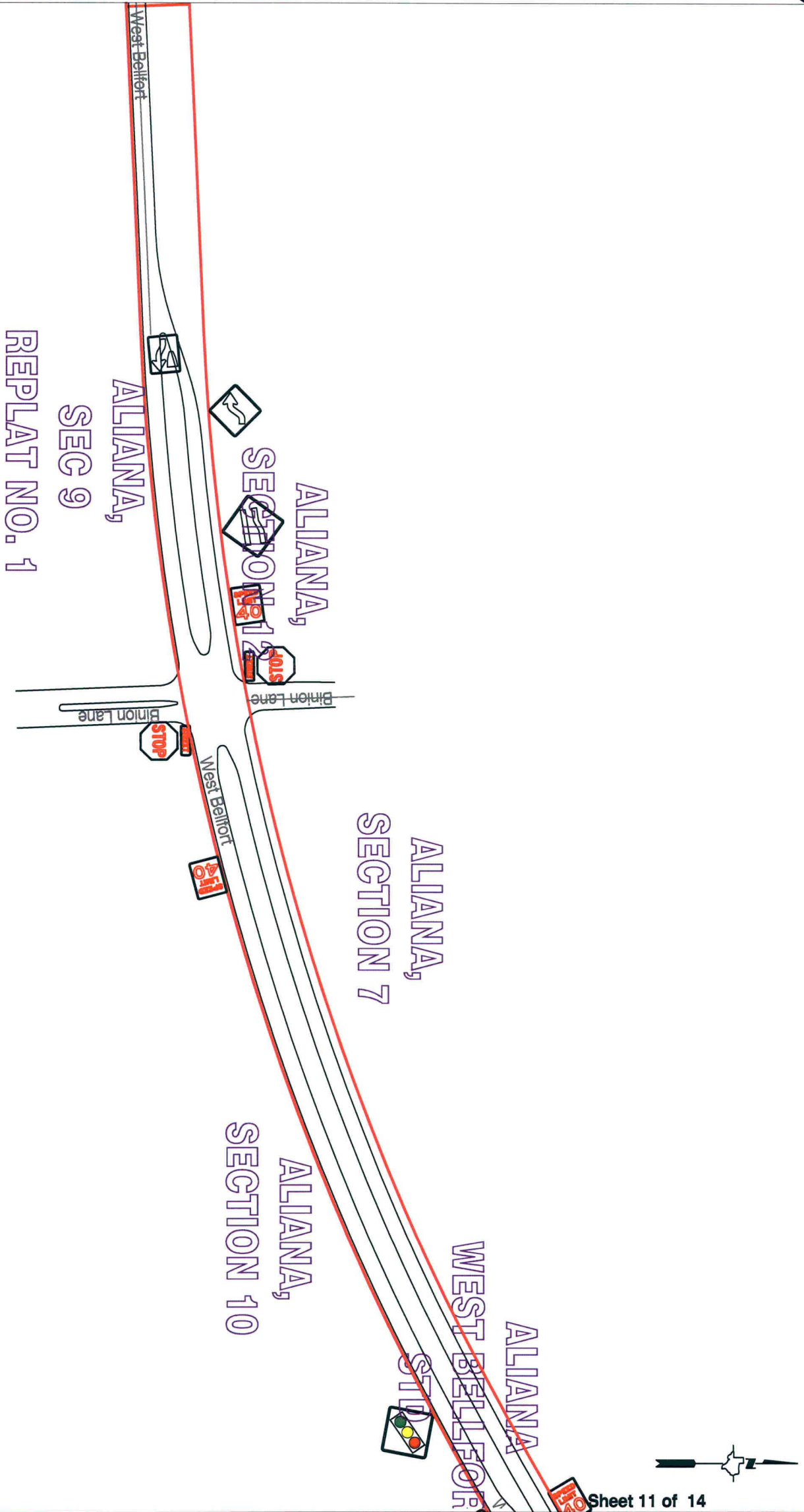
The purpose of this traffic control plan is to establish traffic control for West Belfort from Eldridge to Harlem Road.

Drawn By: L. Brdecka
 Date: 6-27-12
 Approved By: Steven L. Evans
 Date: 6-27-12
 Scale

1" = 200'-0"

**West Belfort from Eldridge to Harlem Road
 Control Map and Traffic Sign Layout**

Fort Bend County Engineering Dept.
 1124 Blume Road
 Rosenberg, Texas 77471



Note:

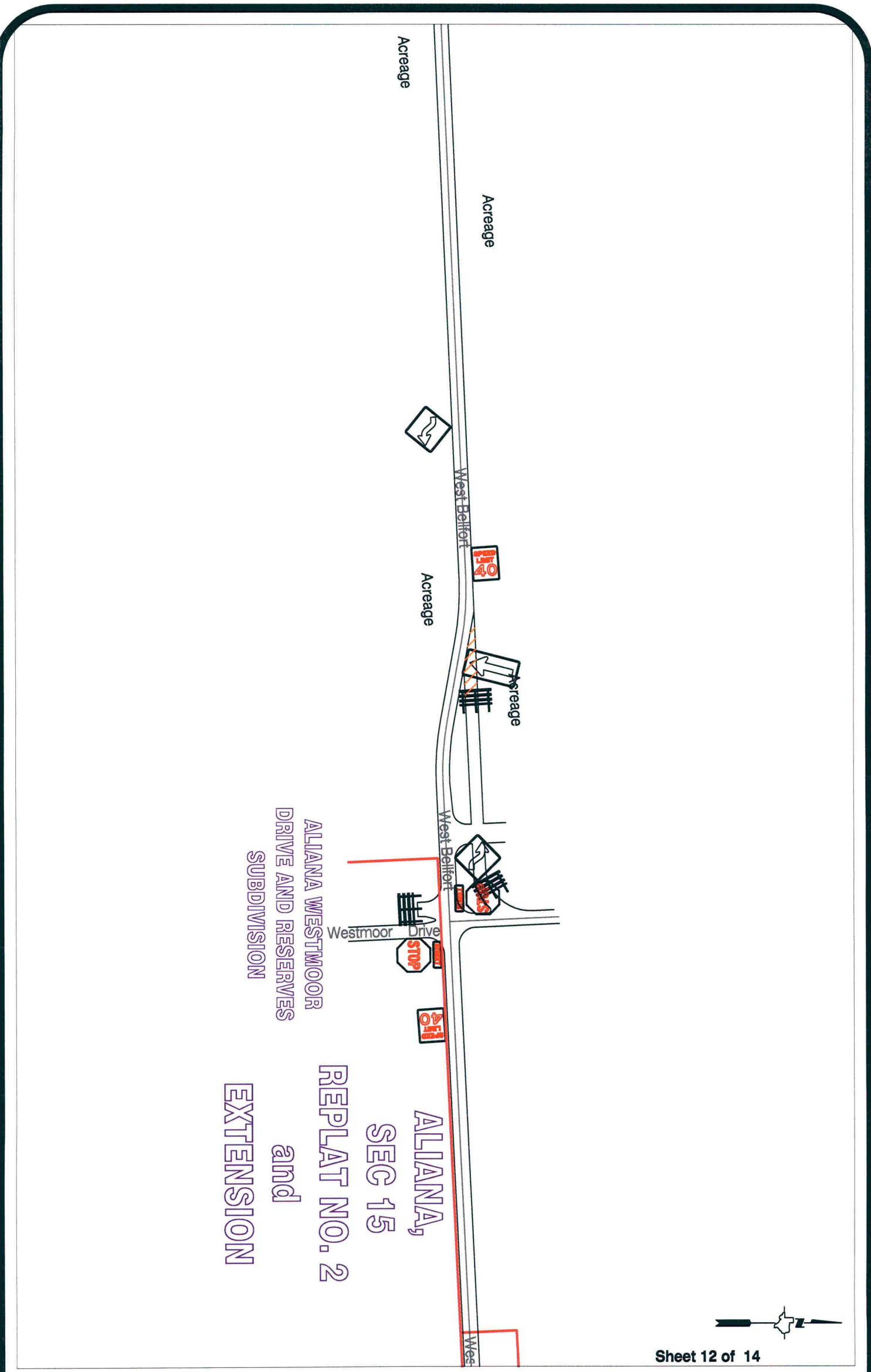
The purpose of this traffic control plan is to establish traffic control for West Bellfort from Eldridge to Harlem Road.

Drawn By: L. Brdecka
 Date: 6-27-12
 Approved By: Steven L. Evans
 Date: 6-27-12

Scale
 1" = 200'-0"

**West Bellfort from Eldridge to Harlem Road
 Control Map and Traffic Sign Layout**

Fort Bend County Engineering Dept.
 1124 Blume Road
 Rosenberg, Texas 77471



ALLIANA WESTMOOR
 DRIVE AND RESERVES
 SUBDIVISION

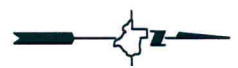
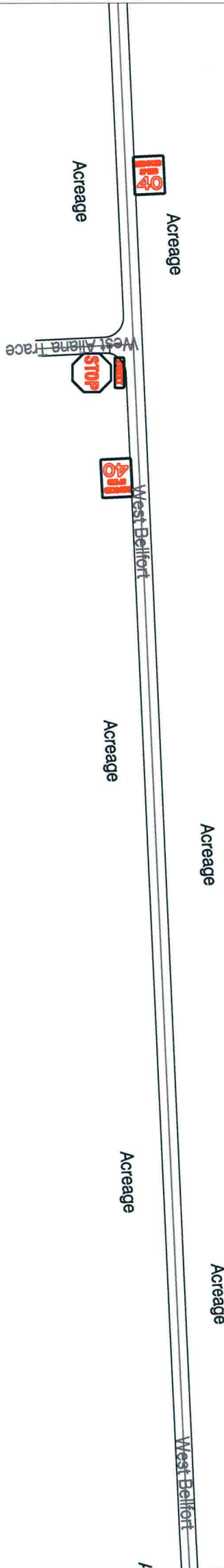
REPLAT NO. 2
 and
 EXTENSION

Note:
 The purpose of this traffic control plan is to establish traffic control for West Belfort from Eldridge to Harlem Road.

Drawn By: L. Brdecka
 Date: 6-27-12
 Approved By: Steven L. Evans
 Date: 6-27-12
 Scale
 1" = 200'-0"

**West Belfort from Eldridge to Harlem Road
 Control Map and Traffic Sign Layout**

Fort Bend County Engineering Dept.
 1124 Blume Road
 Rosenberg, Texas 77471



Sheet 13 of 14

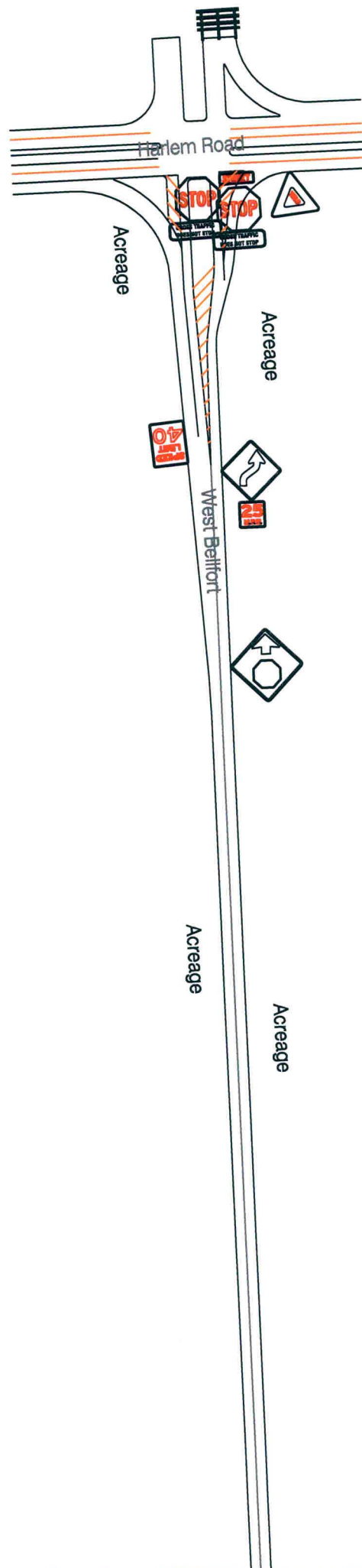
Note:

The purpose of this traffic control plan is to establish traffic control for West Bellfort from Eldridge to Harlem Road.

Drawn By: L. Brdecka
 Date: 6-27-12
 Approved By: Steven L. Evans
 Date: 6-27-12
 Scale
 1" = 200'-0"

**West Bellfort from Eldridge to Harlem Road
 Control Map and Traffic Sign Layout**

Fort Bend County Engineering Dept.
 1124 Blume Road
 Rosenberg, Texas 77471



Sheet 14 of 14

Note:

The purpose of this traffic control plan is to establish traffic control for West Bellfort from Eldridge to Harlem Road.

Drawn By: L. Brdecka

Date: 6-27-12

Approved By: Steven L. Evans

Date: 6-27-12

Scale

1" = 200'-0"

**West Bellfort from Eldridge to Harlem Road
Control Map and Traffic Sign Layout**

Fort Bend County Engineering Dept.
1124 Blume Road
Rosenberg, Texas 77471