

5A

# FORT BEND COUNTY ENGINEERING

Fort Bend County, Texas

Richard W. Stolleis, P.E.  
County Engineer

July 19, 2012

Commissioner W. A. "Andy" Meyers  
Fort Bend County Precinct 3  
22333 Grand Corner Drive  
Katy, Texas 77494

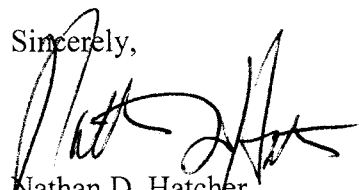
**RE: Katy-Flewellen Road Mobility Bond Project #734 -Traffic Control Plan**  
**From: Katy-Gaston to Pin Oak Road**

Dear Commissioner:

Fort Bend County Engineering has completed and recommends approval of the traffic control plan for the above referenced mobility project. The public hearing date for acceptance of the plan is scheduled for August 7, 2012.

A copy of the traffic control plan is attached for your review. If you should have any questions, please give me a call.

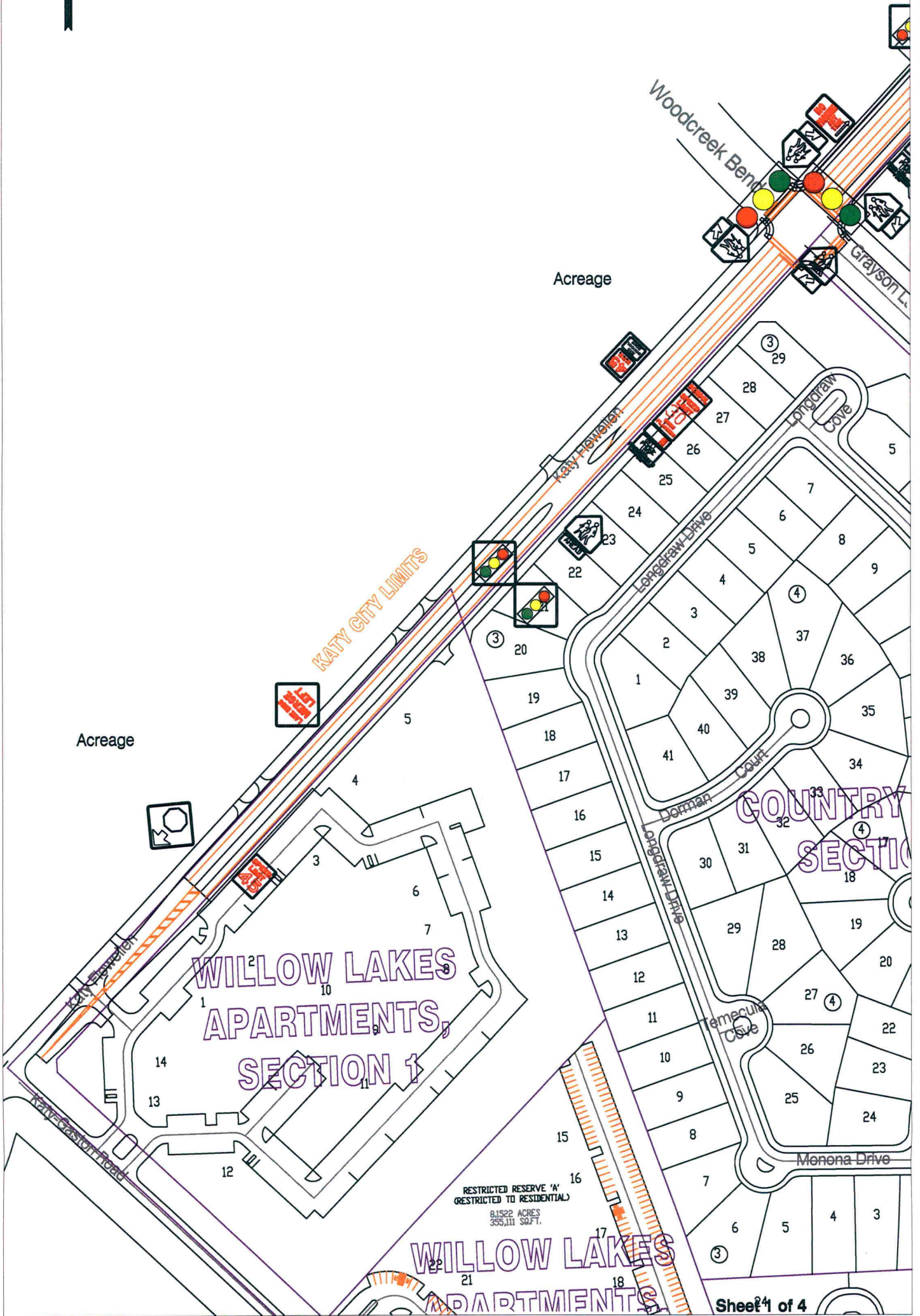
Sincerely,



Nathan D. Hatcher  
Assistant to County Engineer

NDH/mjs

cc: Judge Robert E. Hebert, County Judge  
Marc Grant - FBC Road & Bridge  
Marc Grant - Signage Department  
File



**Note:**

The purpose of this traffic control plan is to establish traffic control for Katy-Flewellen from Katy-Gaston to Pin Oak.

Drawn By: L. Brdecka

Date: 7-19-12

Approved By: Nathan Hatcher

Date: 7-19-12

Scale

1" = 200'-0"

**Katy-Flewellen from Katy-Gaston to Pin Oak Control Map and Traffic Sign Layout**

Fort Bend County Engineering Dept.  
1124 Blume Road  
Rosenberg, Texas 77471



Acreage

Acreage

K.I.S.D. Middle School

KATY CITY LIMIT

COUNTRY LAKES, SECTION 1

COUNTRY LAKES SECTION 2

Sheet 2 of 4

**Note:**

The purpose of this traffic control plan is to establish traffic control for Katy-Flewellen from Katy-Gaston to Pin Oak.

Drawn By: L. Brdecka

Date: 7-19-12

Approved By: Nathan Hatcher

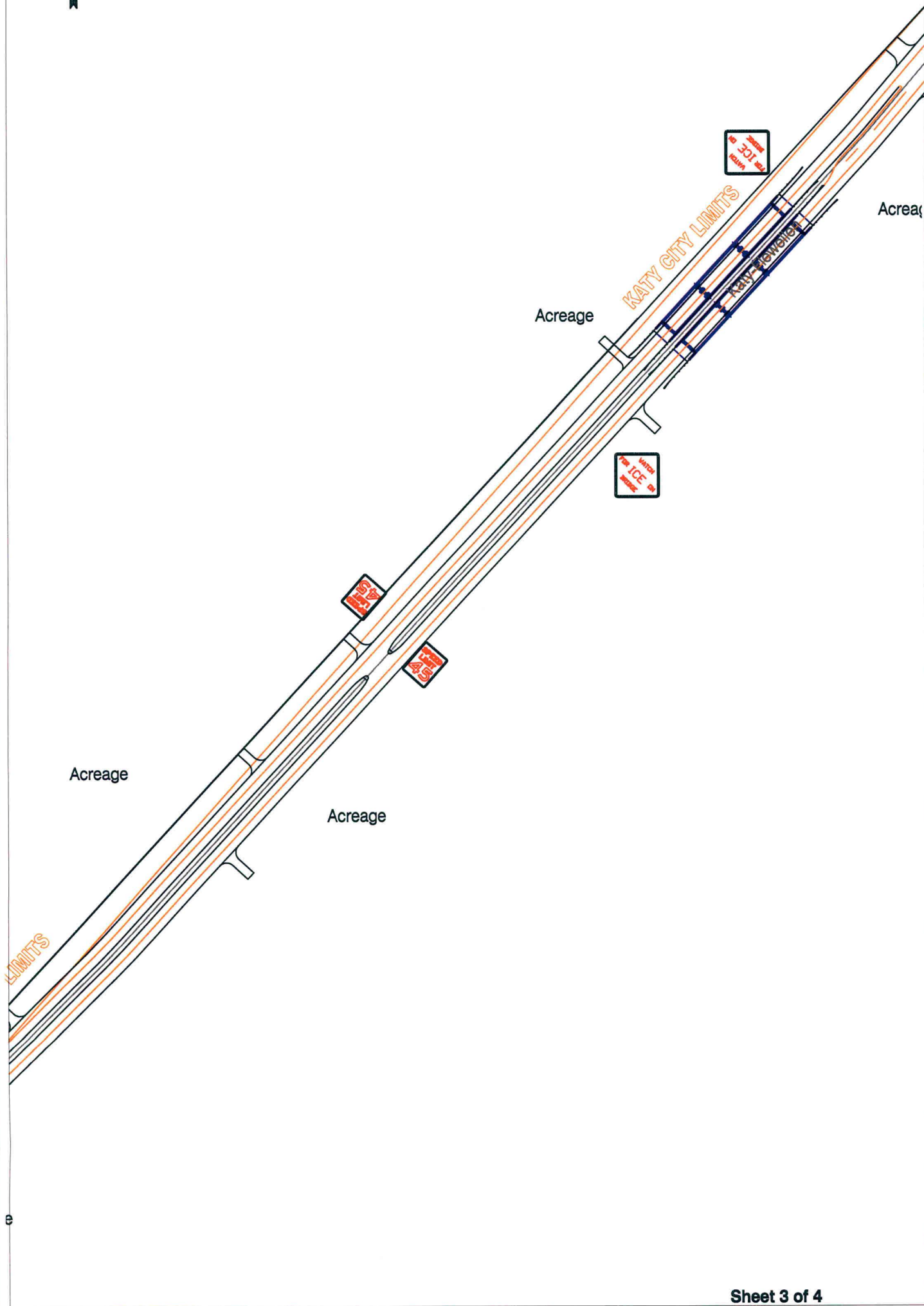
Date: 7-19-12

Scale

1" = 200'-0"

Katy-Flewellen from Katy-Gaston to Pin Oak Control Map and Traffic Sign Layout

Fort Bend County Engineering Dept.  
1124 Blume Road  
Rosenberg, Texas 77471



Sheet 3 of 4

**Note:**

The purpose of this traffic control plan is to establish traffic control for Katy-Flewellen from Katy-Gaston to Pin Oak.

Drawn By: L. Brdecka

Date: 7-19-12

Approved By: Nathan Hatcher

Date: 7-19-12

Scale

1" = 200'-0"

**Katy-Flewellen from Katy-Gaston to Pin Oak Control Map and Traffic Sign Layout**

Fort Bend County Engineering Dept.  
1124 Blume Road  
Rosenberg, Texas 77471



VILLIAN R. LANGELIN, TRUSTEE  
TO  
PIN OAK CROSSING, INC.  
4,9785 ACRES



**Note:**

The purpose of this traffic control plan is to establish traffic control for Katy-Flewellen from Katy-Gaston to Pin Oak.

Drawn By: L. Brdecka

Date: 7-19-12

Approved By: Nathan Hatcher

Date: 7-19-12

Scale

1" = 200'-0"

**Katy-Flewellen from Katy-Gaston to Pin Oak Control Map and Traffic Sign Layout**

Fort Bend County Engineering Dept.  
1124 Blume Road  
Rosenberg, Texas 77471