

**FORT BEND COUNTY ENGINEERING**  
Fort Bend County, Texas

Richard W. Stolleis, P.E.  
County Engineer

June 26, 2012

Commissioner W. A. "Andy" Meyers  
Fort Bend County Precinct 3  
22333 Grand Corner Drive  
Katy, Texas 77494

**RE: Pine Mill Ranch, Section 6 - Traffic Control Plan**  
**Pine Mill Ranch, Section 12**  
**Pine Mill Ranch, Section 13**

Dear Commissioner:

Fort Bend County Engineering has completed and recommends approval of the traffic control plans for the above referenced subdivisions. The public hearing date for acceptance of the plans is being scheduled.

A copy of the traffic control plans is attached for your review. If you should have any questions, please give me a call.

Sincerely,



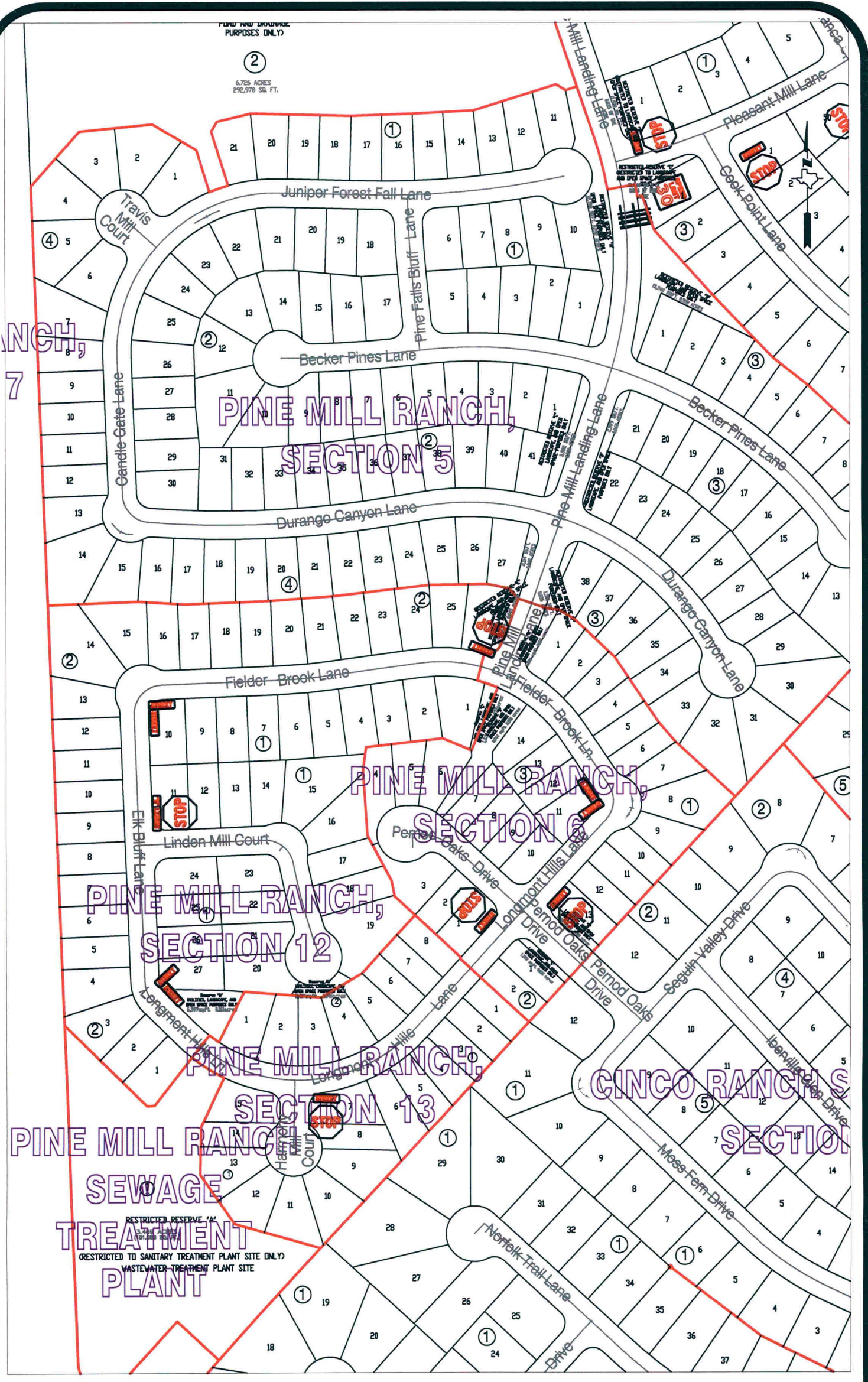
Nathan D. Hatcher  
Assistant to County Engineer

NDH/mjs

cc: Judge Robert E. Hebert, County Judge  
Marc Grant - FBC Road & Bridge  
Marc Grant - Signage Department  
File

LAND AND SURFACE  
PURPOSES ONLY

②  
6,726 ACRES  
292,978 SQ. FT.



**Note:**

The purpose of this traffic control plan is to establish traffic control for Pine Mill Ranch, Section 6.

Drawn By: L. Brdecka  
 Date: 6-27-12  
 Approved By: Nathan Hatcher  
 Date: 6-27-12  
 Scale  
 1" = 200'-0"

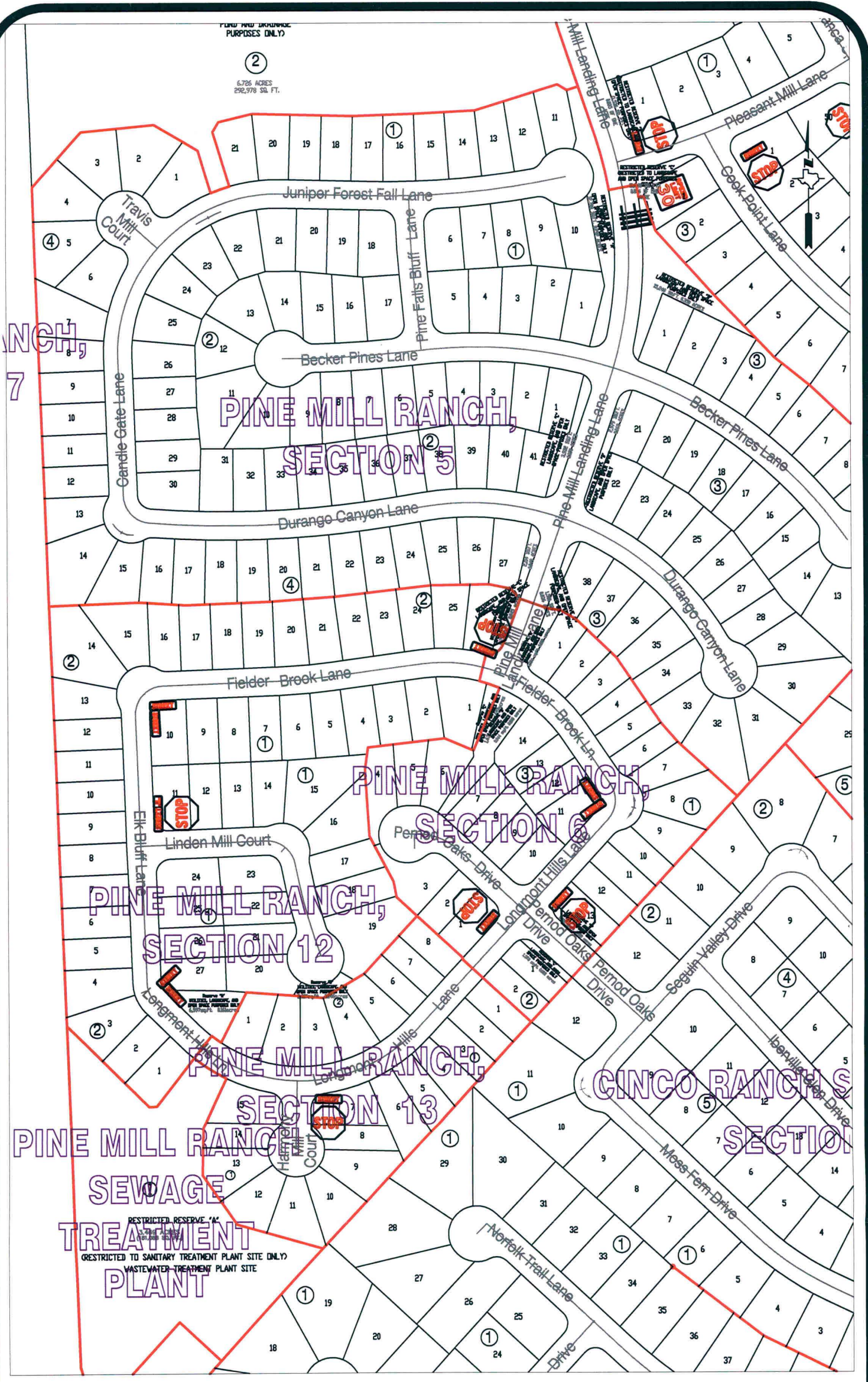
**Pine Mill Ranch, Section 6  
 Control Map and  
 Traffic Sign Layout**

Fort Bend County Engineering Dept.  
 1124 Blume Road  
 Rosenberg, Texas 77471

PLANS AND DIMENSIONS FOR TRAFFIC CONTROL PURPOSES ONLY

②

6,786 ACRES  
292,978 SQ. FT.



7  
7

RESTRICTED RESERVE 'A'  
(FOR SANITARY TREATMENT PLANT ONLY)  
RESTRICTED TO SANITARY TREATMENT PLANT SITE ONLY  
WASTEWATER TREATMENT PLANT SITE

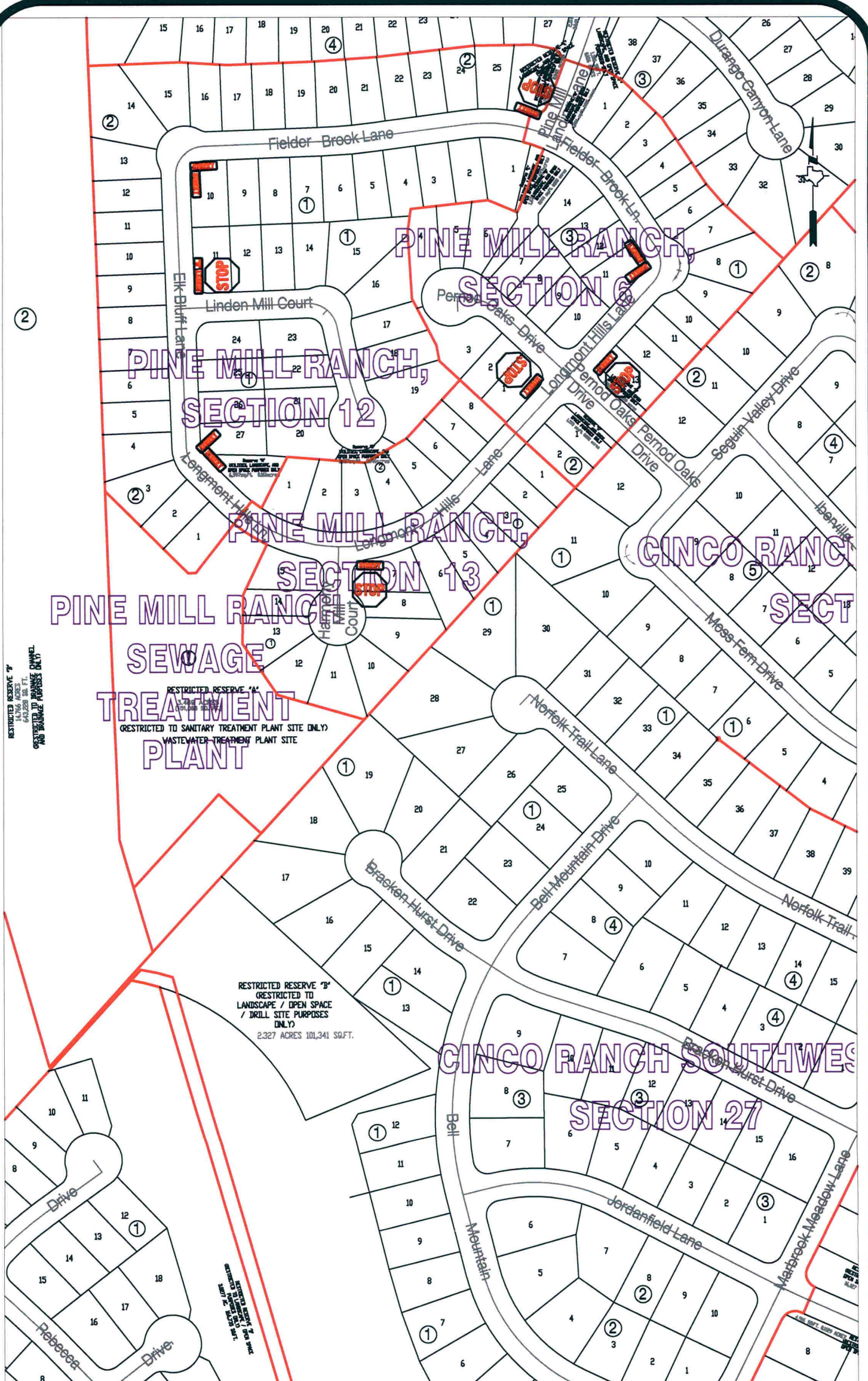
**Note:**

The purpose of this traffic control plan is to establish traffic control for Pine Mill Ranch, Section 12.

Drawn By: L. Brdecka  
 Date: 6-27-12  
 Approved By: Nathan Hatcher  
 Date: 6-27-12  
 Scale: 1" = 200'-0"

**Pine Mill Ranch, Section 12**  
**Control Map and**  
**Traffic Sign Layout**

Fort Bend County Engineering Dept.  
 1124 Blume Road  
 Rosenberg, Texas 77471



**Note:**

The purpose of this traffic control plan is to establish traffic control for Pine Mill Ranch, Section 13.

Drawn By: L. Brdecka  
 Date: 6-27-12  
 Approved By: Nathan Hatcher  
 Date: 6-27-12  
 Scale  
 1" = 200'-0"

**Pine Mill Ranch, Section 13  
 Control Map and  
 Traffic Sign Layout**

Fort Bend County Engineering Dept.  
 1124 Blume Road  
 Rosenberg, Texas 77471