

**FORT BEND COUNTY ENGINEERING**

Fort Bend County, Texas

Richard W. Stolleis, P.E.  
County Engineer

June 26, 2012

Commissioner James Patterson  
Fort Bend County Precinct 4  
12919 Dairy Ashford Road  
Sugar Land, Texas 77478

**RE: Long Meadow Farms, Section 18 - Traffic Control Plan**  
**Long Meadow Farms, Section 20**  
**Long Meadow Farms, Section 28**

Dear Commissioner:

Fort Bend County Engineering has completed and recommends approval of the traffic control plans for the above referenced subdivisions. The public hearing date for acceptance of the plans is being scheduled.

A copy of the traffic control plans is attached for your review. If you should have any questions, please give me a call.

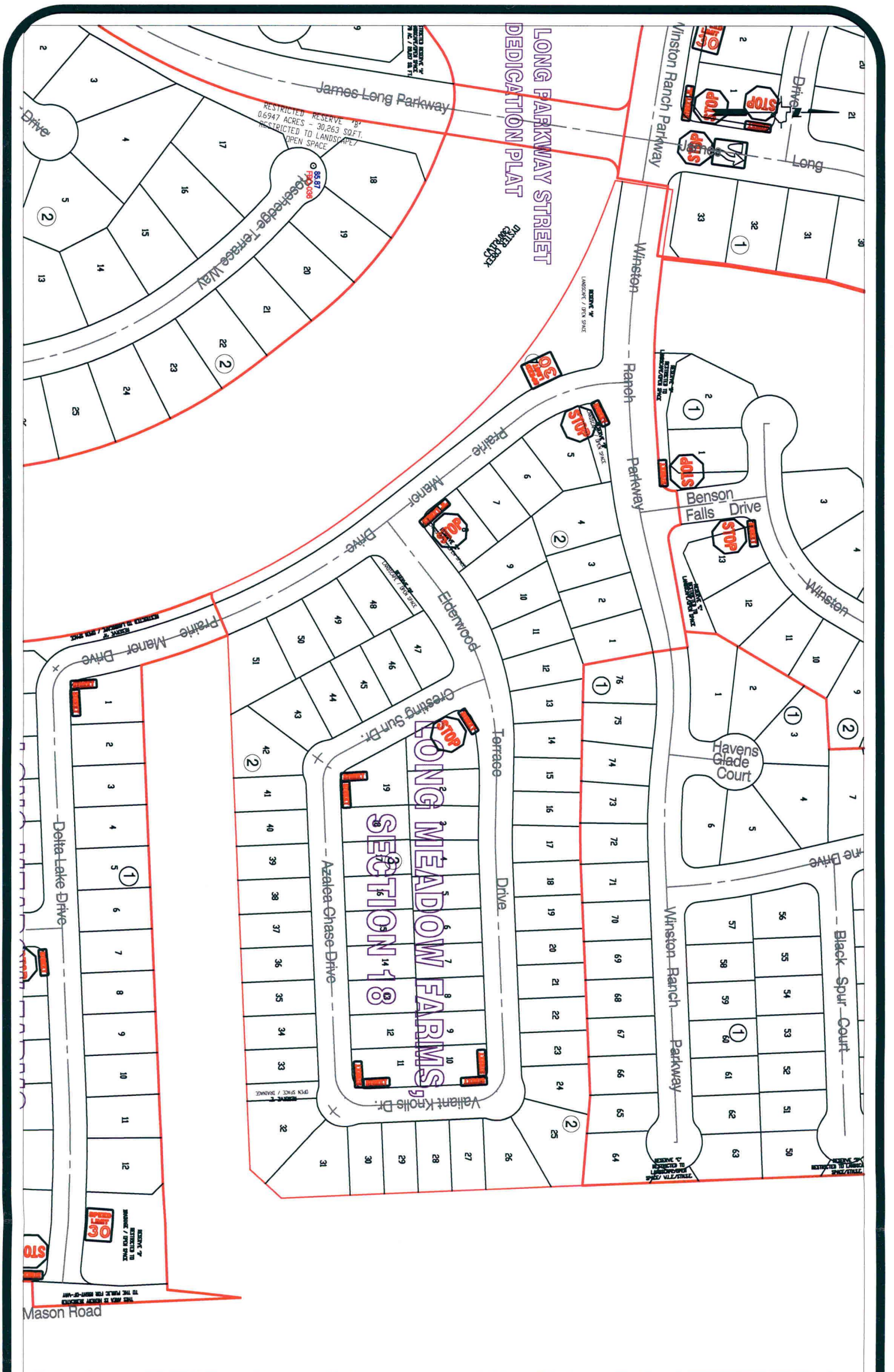
Sincerely,



Steven L. Evans  
Assistant to County Engineer

SLE/mjs

cc: Judge Robert E. Hebert, County Judge  
Marc Grant - FBC Road & Bridge  
Marc Grant - Signage Department  
File



**Note:**

The purpose of this traffic control plan is to establish traffic control for Long Meadow Farms, Section 18.

Drawn By: L. Brdecka

Date: 6-27-12

Approved By: Steve Evans

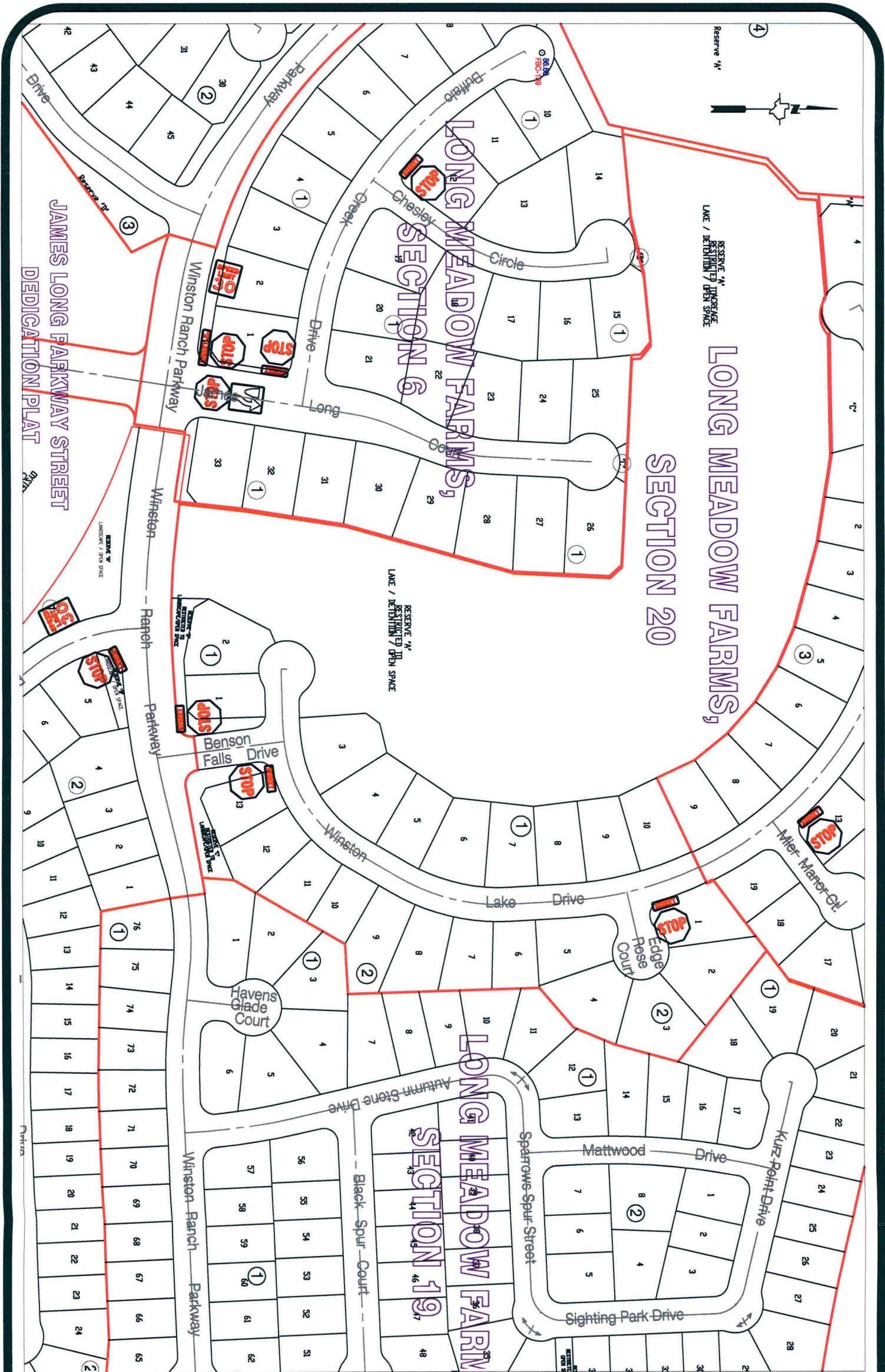
Date: 6-27-12

Scale

1" = 200'-0"

**Long Meadow Farms, Section 18  
Control Map and  
Traffic Sign Layout**

Fort Bend County Engineering Dept.  
1124 Blume Road  
Rosenberg, Texas 77471



**Note:**

The purpose of this traffic control plan is to establish traffic control for Long Meadow Farms, Section 20.

Drawn By: L. Brdecka

Date: 6-27-12

Approved By: Steve Evans

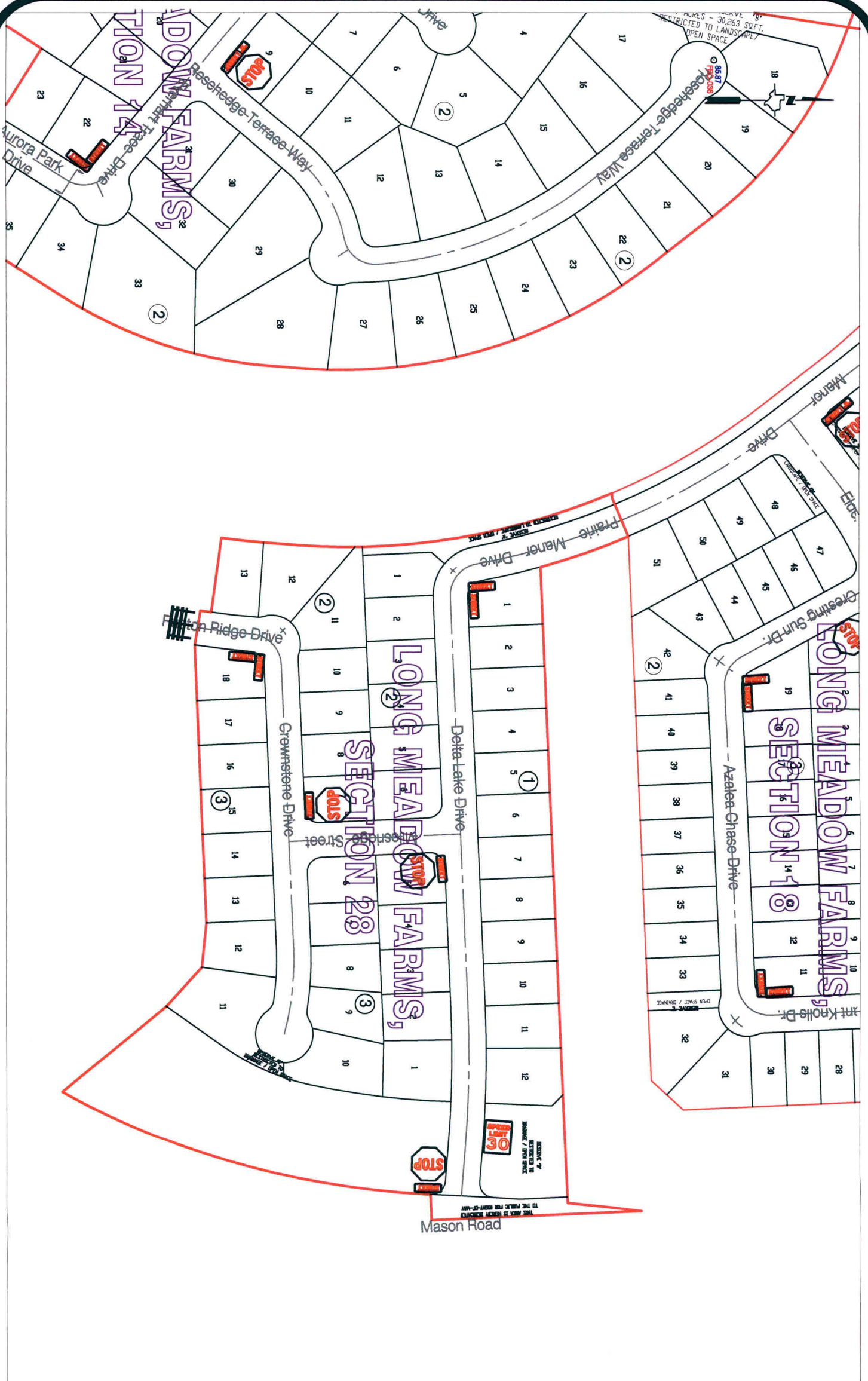
Date: 6-27-12

Scale

1" = 200'-0"

**Long Meadow Farms, Section 20  
Control Map and  
Traffic Sign Layout**

Fort Bend County Engineering Dept.  
1124 Blume Road  
Rosenberg, Texas 77471



**Note:**  
 The purpose of this traffic control plan is to establish traffic control for Long Meadow Farms, Section 28.

Drawn By: L. Brdecka  
 Date: 6-27-12  
 Approved By: Steve Evans  
 Date: 6-27-12  
 Scale  
 1" = 200'-0"

**Long Meadow Farms, Section 28**  
**Control Map and**  
**Traffic Sign Layout**  
 Fort Bend County Engineering Dept.  
 1124 Blume Road  
 Rosenberg, Texas 77471