

**PLAT RECORDING SHEET**

**PLAT NAME:** LJ Parkway Street Dedication Plat Phase IV

**PLAT NO:** \_\_\_\_\_

**ACREAGE:** 22.4882

**LEAGUE:** William Little Survey

**ABSTRACT NUMBER:** 54

**NUMBER OF BLOCKS:** 1

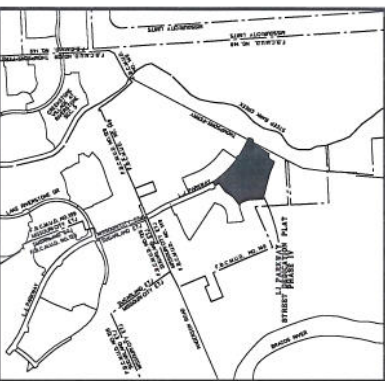
**NUMBER OF LOTS:** 0

**NUMBER OF RESERVES:** 2

**OWNERS:** Herrin Ranch Development II, Inc. and Fort Bend County Levee

Improvement District No. 19

\_\_\_\_\_  
**(DEPUTY CLERK)**



RESERVE "A"	LANDSCAPE / OPEN SPACE	2.1994 AC. / 10.818 S.F.
RESERVE "B" <td>RECREATION / PLAYSET</td> <td>11.8994 AC. / 131,136 S.F.</td>	RECREATION / PLAYSET	11.8994 AC. / 131,136 S.F.
TOTAL		14.0988 ACRES

RESERVE "A"	LANDSCAPE / OPEN SPACE	2.1994 AC. / 10.818 S.F.
RESERVE "B" <td>RECREATION / PLAYSET</td> <td>11.8994 AC. / 131,136 S.F.</td>	RECREATION / PLAYSET	11.8994 AC. / 131,136 S.F.
TOTAL		14.0988 ACRES

ACREAGE  
 CALL 18.65 ACRES  
 HERRIN RANCH DEV. #1  
 C.F. NO. 2009078945  
 D.R.F. B.C.

ACREAGE  
 CALL 34.31 ACRES  
 HERRIN TRACT B-3441  
 C.F. NO. 2009078945  
 D.R.F. B.C.

ACREAGE  
 CALL 18.65 ACRES  
 HERRIN RANCH DEV. #1  
 C.F. NO. 2009078945  
 D.R.F. B.C.

ACREAGE  
 CALL 18.65 ACRES  
 HERRIN RANCH DEV. #1  
 C.F. NO. 2009078945  
 D.R.F. B.C.

ACREAGE  
 CALL 18.65 ACRES  
 HERRIN RANCH DEV. #1  
 C.F. NO. 2009078945  
 D.R.F. B.C.

ACREAGE  
 CALL 18.65 ACRES  
 HERRIN RANCH DEV. #1  
 C.F. NO. 2009078945  
 D.R.F. B.C.

ACREAGE  
 CALL 18.65 ACRES  
 HERRIN RANCH DEV. #1  
 C.F. NO. 2009078945  
 D.R.F. B.C.

# LJ PARKWAY STREET DEDICATION PLAT PHASE IV

BEING A SUBDIVISION OF 22.4882 ACRES  
 WILLIAM LITTLE SURVEY, A-54  
 FORT BEND COUNTY, TEXAS

1 BLOCK 2 RESERVES  
 SCALE: 1"=100' DATE: MAY, 2012

OWNER:  
 HERRIN RANCH DEVELOPMENT II, INC.  
 A TEXAS CORPORATION  
 1801 W. WILSON, 1102 PRESIDENT  
 BUILDING, SUITE 100  
 HOUSTON, TEXAS 77056  
 (281) 481-8100 FAX: (281) 481-8104

ENGINEER/SURVEYOR:  
 Costello, Inc.  
 Engineering and Surveying  
 2002 Formosa Blvd. Suite 400  
 Houston, Texas 77058  
 (713) 774-1100  
 (713) 774-1100  
 REGISTRATION NO. 380

PLANNER:  
 KERRY R. GILBERT & ASSOCIATES, INC.  
 LAND PLANNING CONSULTANTS  
 8501 GIRD PARK BLVD.  
 KATY, TEXAS 77454  
 (281) 339-0091

MARK D. ARMSTRONG  
 PROFESSIONAL LAND SURVEYOR  
 TEXAS REGISTRATION NUMBER - 5363



MISSOURI CITY  
 TEXAS

RESERVE "A"	LANDSCAPE / OPEN SPACE	2.1994 AC. / 10.818 S.F.
RESERVE "B" <td>RECREATION / PLAYSET</td> <td>11.8994 AC. / 131,136 S.F.</td>	RECREATION / PLAYSET	11.8994 AC. / 131,136 S.F.
TOTAL		14.0988 ACRES

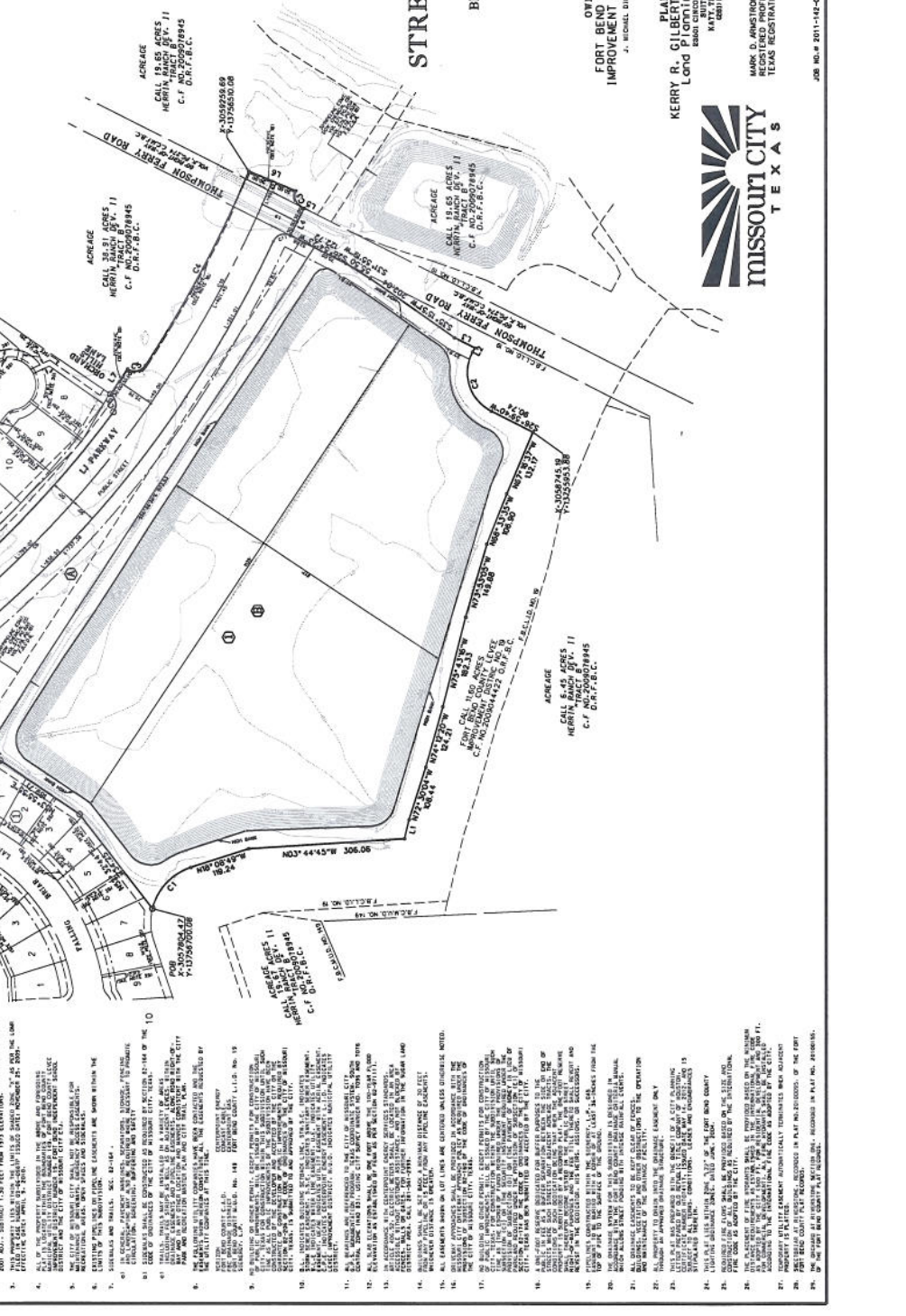
RESERVE "A"	LANDSCAPE / OPEN SPACE	2.1994 AC. / 10.818 S.F.
RESERVE "B" <td>RECREATION / PLAYSET</td> <td>11.8994 AC. / 131,136 S.F.</td>	RECREATION / PLAYSET	11.8994 AC. / 131,136 S.F.
TOTAL		14.0988 ACRES

RESERVE "A"	LANDSCAPE / OPEN SPACE	2.1994 AC. / 10.818 S.F.
RESERVE "B" <td>RECREATION / PLAYSET</td> <td>11.8994 AC. / 131,136 S.F.</td>	RECREATION / PLAYSET	11.8994 AC. / 131,136 S.F.
TOTAL		14.0988 ACRES

RESERVE "A"	LANDSCAPE / OPEN SPACE	2.1994 AC. / 10.818 S.F.
RESERVE "B" <td>RECREATION / PLAYSET</td> <td>11.8994 AC. / 131,136 S.F.</td>	RECREATION / PLAYSET	11.8994 AC. / 131,136 S.F.
TOTAL		14.0988 ACRES

RESERVE "A"	LANDSCAPE / OPEN SPACE	2.1994 AC. / 10.818 S.F.
RESERVE "B" <td>RECREATION / PLAYSET</td> <td>11.8994 AC. / 131,136 S.F.</td>	RECREATION / PLAYSET	11.8994 AC. / 131,136 S.F.
TOTAL		14.0988 ACRES

RESERVE "A"	LANDSCAPE / OPEN SPACE	2.1994 AC. / 10.818 S.F.
RESERVE "B" <td>RECREATION / PLAYSET</td> <td>11.8994 AC. / 131,136 S.F.</td>	RECREATION / PLAYSET	11.8994 AC. / 131,136 S.F.
TOTAL		14.0988 ACRES



NOTES:  
 1. CONFORM TO THE CITY OF HOUSTON, TEXAS, SUBDIVISION MAP ACT.  
 2. THIS PLAT IS TO BE RECORDED IN THE PUBLIC RECORDS OF THE COUNTY OF HOUSTON, TEXAS.  
 3. THE SURVEYOR HAS CONDUCTED A VISUAL INSPECTION OF THE PROPERTY AND HAS FOUND IT TO BE IN ACCORDANCE WITH THE CITY OF HOUSTON, TEXAS, SUBDIVISION MAP ACT.  
 4. ALL OF THE PROPERTY SHOWN ON THIS PLAT IS SUBJECT TO THE CITY OF HOUSTON, TEXAS, SUBDIVISION MAP ACT.  
 5. THE SURVEYOR HAS CONDUCTED A VISUAL INSPECTION OF THE PROPERTY AND HAS FOUND IT TO BE IN ACCORDANCE WITH THE CITY OF HOUSTON, TEXAS, SUBDIVISION MAP ACT.  
 6. THE SURVEYOR HAS CONDUCTED A VISUAL INSPECTION OF THE PROPERTY AND HAS FOUND IT TO BE IN ACCORDANCE WITH THE CITY OF HOUSTON, TEXAS, SUBDIVISION MAP ACT.  
 7. THE SURVEYOR HAS CONDUCTED A VISUAL INSPECTION OF THE PROPERTY AND HAS FOUND IT TO BE IN ACCORDANCE WITH THE CITY OF HOUSTON, TEXAS, SUBDIVISION MAP ACT.  
 8. THE SURVEYOR HAS CONDUCTED A VISUAL INSPECTION OF THE PROPERTY AND HAS FOUND IT TO BE IN ACCORDANCE WITH THE CITY OF HOUSTON, TEXAS, SUBDIVISION MAP ACT.  
 9. THE SURVEYOR HAS CONDUCTED A VISUAL INSPECTION OF THE PROPERTY AND HAS FOUND IT TO BE IN ACCORDANCE WITH THE CITY OF HOUSTON, TEXAS, SUBDIVISION MAP ACT.  
 10. THE SURVEYOR HAS CONDUCTED A VISUAL INSPECTION OF THE PROPERTY AND HAS FOUND IT TO BE IN ACCORDANCE WITH THE CITY OF HOUSTON, TEXAS, SUBDIVISION MAP ACT.  
 11. THE SURVEYOR HAS CONDUCTED A VISUAL INSPECTION OF THE PROPERTY AND HAS FOUND IT TO BE IN ACCORDANCE WITH THE CITY OF HOUSTON, TEXAS, SUBDIVISION MAP ACT.  
 12. THE SURVEYOR HAS CONDUCTED A VISUAL INSPECTION OF THE PROPERTY AND HAS FOUND IT TO BE IN ACCORDANCE WITH THE CITY OF HOUSTON, TEXAS, SUBDIVISION MAP ACT.  
 13. THE SURVEYOR HAS CONDUCTED A VISUAL INSPECTION OF THE PROPERTY AND HAS FOUND IT TO BE IN ACCORDANCE WITH THE CITY OF HOUSTON, TEXAS, SUBDIVISION MAP ACT.  
 14. THE SURVEYOR HAS CONDUCTED A VISUAL INSPECTION OF THE PROPERTY AND HAS FOUND IT TO BE IN ACCORDANCE WITH THE CITY OF HOUSTON, TEXAS, SUBDIVISION MAP ACT.  
 15. THE SURVEYOR HAS CONDUCTED A VISUAL INSPECTION OF THE PROPERTY AND HAS FOUND IT TO BE IN ACCORDANCE WITH THE CITY OF HOUSTON, TEXAS, SUBDIVISION MAP ACT.  
 16. THE SURVEYOR HAS CONDUCTED A VISUAL INSPECTION OF THE PROPERTY AND HAS FOUND IT TO BE IN ACCORDANCE WITH THE CITY OF HOUSTON, TEXAS, SUBDIVISION MAP ACT.  
 17. THE SURVEYOR HAS CONDUCTED A VISUAL INSPECTION OF THE PROPERTY AND HAS FOUND IT TO BE IN ACCORDANCE WITH THE CITY OF HOUSTON, TEXAS, SUBDIVISION MAP ACT.  
 18. THE SURVEYOR HAS CONDUCTED A VISUAL INSPECTION OF THE PROPERTY AND HAS FOUND IT TO BE IN ACCORDANCE WITH THE CITY OF HOUSTON, TEXAS, SUBDIVISION MAP ACT.  
 19. THE SURVEYOR HAS CONDUCTED A VISUAL INSPECTION OF THE PROPERTY AND HAS FOUND IT TO BE IN ACCORDANCE WITH THE CITY OF HOUSTON, TEXAS, SUBDIVISION MAP ACT.  
 20. THE SURVEYOR HAS CONDUCTED A VISUAL INSPECTION OF THE PROPERTY AND HAS FOUND IT TO BE IN ACCORDANCE WITH THE CITY OF HOUSTON, TEXAS, SUBDIVISION MAP ACT.  
 21. THE SURVEYOR HAS CONDUCTED A VISUAL INSPECTION OF THE PROPERTY AND HAS FOUND IT TO BE IN ACCORDANCE WITH THE CITY OF HOUSTON, TEXAS, SUBDIVISION MAP ACT.  
 22. THE SURVEYOR HAS CONDUCTED A VISUAL INSPECTION OF THE PROPERTY AND HAS FOUND IT TO BE IN ACCORDANCE WITH THE CITY OF HOUSTON, TEXAS, SUBDIVISION MAP ACT.  
 23. THE SURVEYOR HAS CONDUCTED A VISUAL INSPECTION OF THE PROPERTY AND HAS FOUND IT TO BE IN ACCORDANCE WITH THE CITY OF HOUSTON, TEXAS, SUBDIVISION MAP ACT.  
 24. THE SURVEYOR HAS CONDUCTED A VISUAL INSPECTION OF THE PROPERTY AND HAS FOUND IT TO BE IN ACCORDANCE WITH THE CITY OF HOUSTON, TEXAS, SUBDIVISION MAP ACT.  
 25. THE SURVEYOR HAS CONDUCTED A VISUAL INSPECTION OF THE PROPERTY AND HAS FOUND IT TO BE IN ACCORDANCE WITH THE CITY OF HOUSTON, TEXAS, SUBDIVISION MAP ACT.  
 26. THE SURVEYOR HAS CONDUCTED A VISUAL INSPECTION OF THE PROPERTY AND HAS FOUND IT TO BE IN ACCORDANCE WITH THE CITY OF HOUSTON, TEXAS, SUBDIVISION MAP ACT.  
 27. THE SURVEYOR HAS CONDUCTED A VISUAL INSPECTION OF THE PROPERTY AND HAS FOUND IT TO BE IN ACCORDANCE WITH THE CITY OF HOUSTON, TEXAS, SUBDIVISION MAP ACT.  
 28. THE SURVEYOR HAS CONDUCTED A VISUAL INSPECTION OF THE PROPERTY AND HAS FOUND IT TO BE IN ACCORDANCE WITH THE CITY OF HOUSTON, TEXAS, SUBDIVISION MAP ACT.  
 29. THE SURVEYOR HAS CONDUCTED A VISUAL INSPECTION OF THE PROPERTY AND HAS FOUND IT TO BE IN ACCORDANCE WITH THE CITY OF HOUSTON, TEXAS, SUBDIVISION MAP ACT.  
 30. THE SURVEYOR HAS CONDUCTED A VISUAL INSPECTION OF THE PROPERTY AND HAS FOUND IT TO BE IN ACCORDANCE WITH THE CITY OF HOUSTON, TEXAS, SUBDIVISION MAP ACT.

