

5A

FORT BEND COUNTY ENGINEERING

Fort Bend County, Texas

D. Jesse Hegemier
County Engineer

March 20, 2012

Commissioner Grady Prestage
Fort Bend County Precinct 2
3030 Texas Parkway, Suite 213
Missouri City, Texas 77459

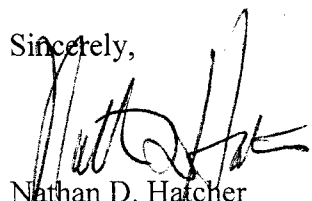
RE: Discovery Lane Street Dedication -Traffic Control Plan

Dear Commissioner:

Fort Bend County Engineering has completed and recommend approval of the traffic control plan for the above referenced subdivision. The public hearing date for acceptance of the plan is being scheduled.

A copy of the traffic control plan is attached for your review. If you should have any questions, please give me a call.

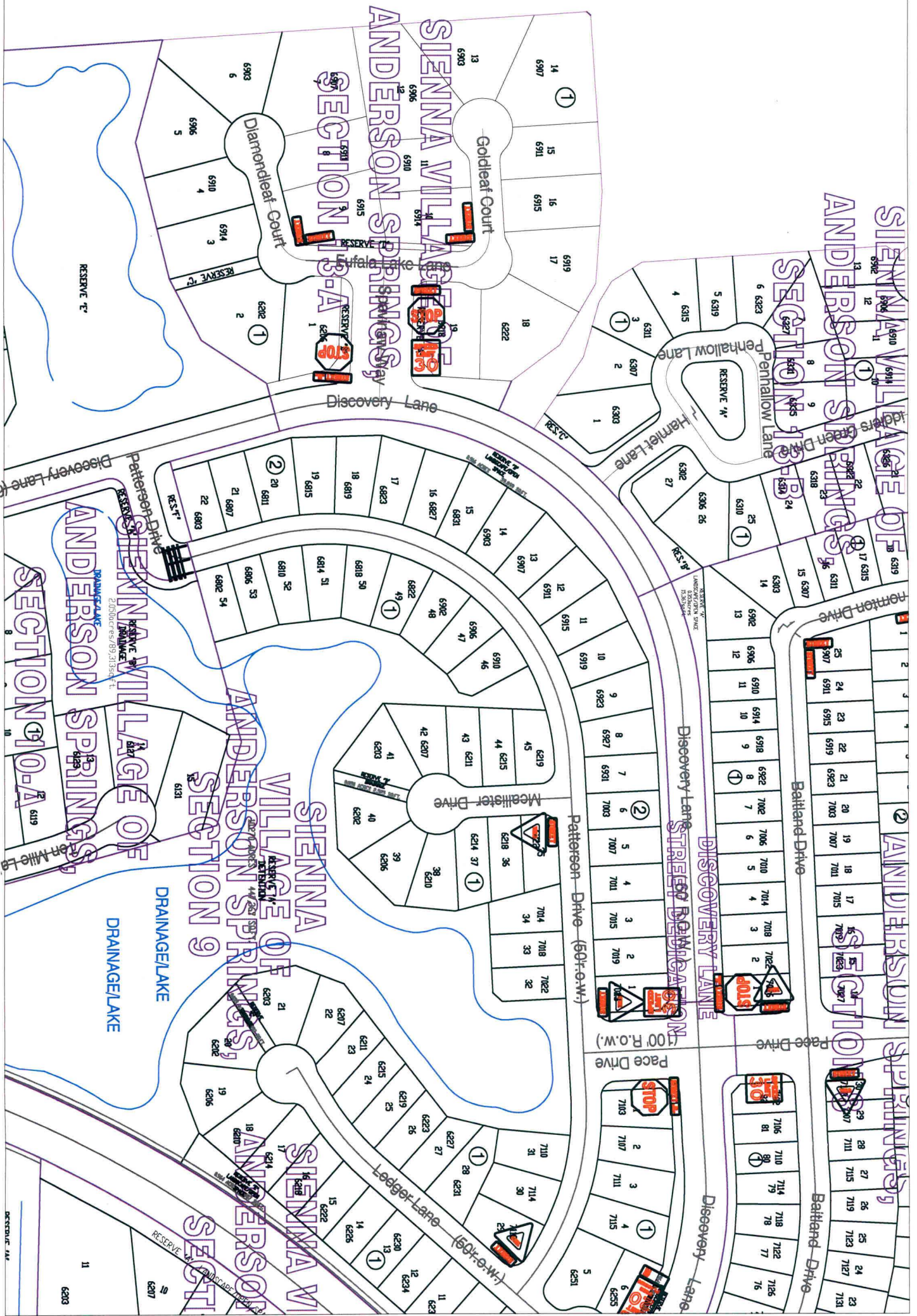
Sincerely,



Nathan D. Hatcher
Assistant to County Engineer

NDH/mjs

cc: Judge Robert E. Hebert, County Judge
Marc Grant - FBC Road & Bridge
Marc Grant - Signage Department
File



Note:

The purpose of this traffic control plan is to establish traffic control for Discovery Lane Street Dedication.

Drawn By: L. Brdecka

Date: 3-20-12

Approved By: Nathan Hatcher

Date: 3-20-12

Scale

1" = 200'-0"

**Discovery Lane Street Dedication
Control Map
and Traffic Sign Layout**

Fort Bend County Engineering Dept.
1124 Blume Road
Rosenberg, Texas 77471