

**FORT BEND COUNTY ENGINEERING**

Fort Bend County, Texas

D. Jesse Hegemier  
County Engineer

January 11, 2012

Commissioner Richard Morrison  
Fort Bend County Precinct 1  
1517 Eugene Heimann Circle, Suite 300  
Richmond, Texas 77469

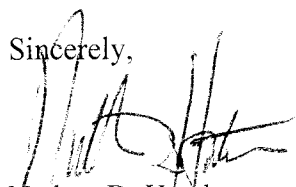
**RE: Sunrise Meadow, Section 5 -Traffic Control Plan  
Sunrise Meadow Drive Street Dedication**

Dear Commissioner:

Fort Bend County Engineering has completed and recommends approval of the traffic control plans for the above referenced subdivisions. The public hearing date for acceptance of the plans is being scheduled.

A copy of the traffic control plan is attached for your review. If you should have any questions, please give me a call.

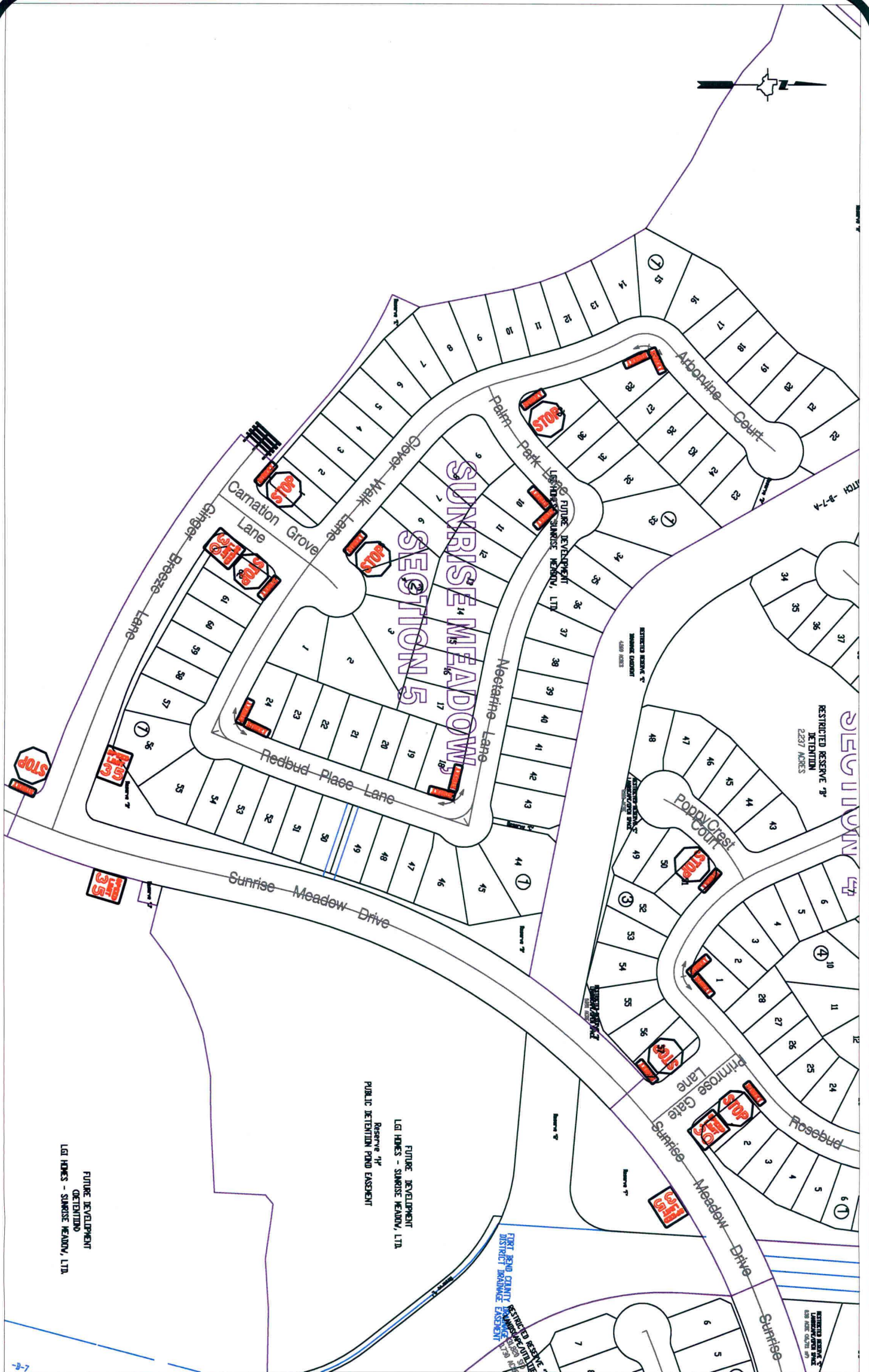
Sincerely,



Nathan D. Hatcher  
Assistant to County Engineer

NDH/mjs

cc: Judge Robert E. Hebert, County Judge  
Marc Grant - FBC Road & Bridge  
Marc Grant - Signage Department  
File



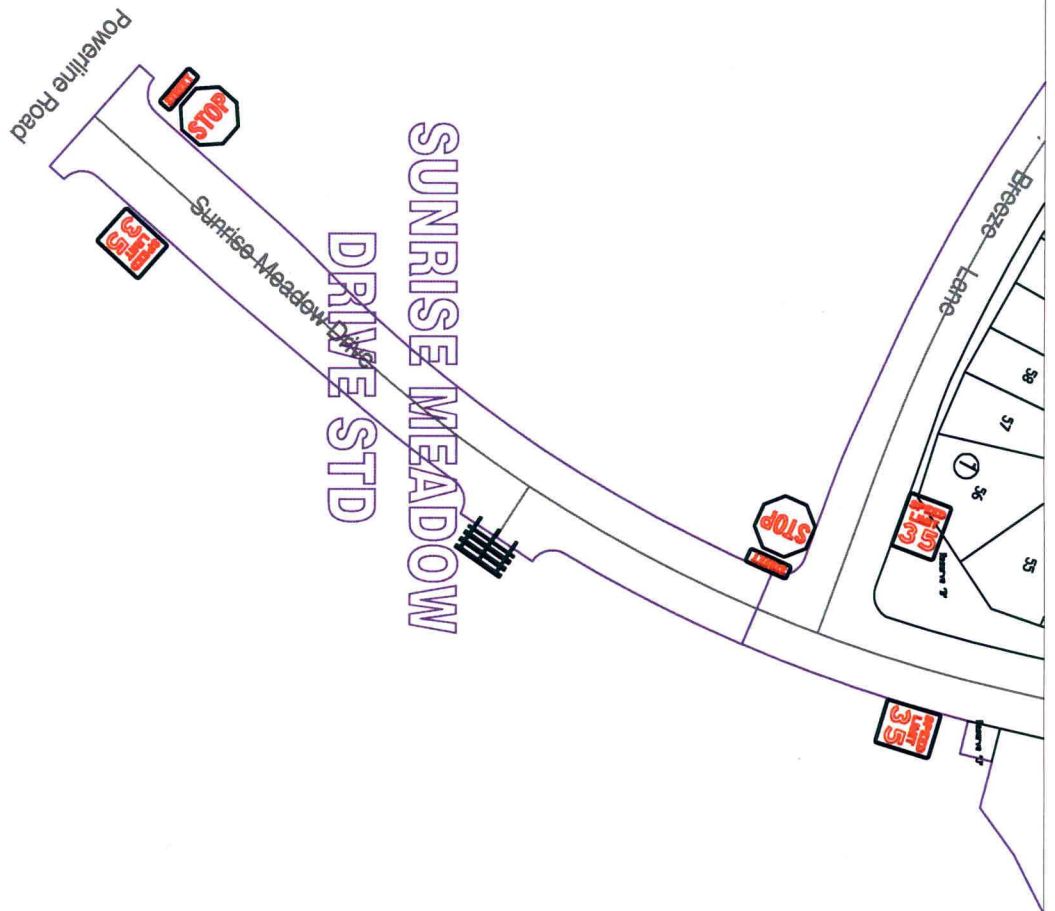
**Note:**

The purpose of this traffic control plan is to establish traffic control for Sunrise Meadow, Section 5.

Drawn By: L. Brdecka  
 Date: 1-10-12  
 Approved By: Nathan Hatcher  
 Date: 1-10-12  
 Scale  
 1" = 200'-0"

**Sunrise Meadow, Section 5  
 Control Map and  
 Traffic Sign Layout**

Fort Bend County Engineering Dept.  
 1124 Blume Road  
 Rosenberg, Texas 77471



EL. REGALADO  
1.620 ACRES

CRAIG ZAMATOVSKI  
1.372 ACRES

140'  
DRAINAGE ESMNT.

FORT BEND

FUTURE DEVELOPMENT  
ORIENTING  
LGI HOMES - SUNRISE MEADOW, LTD.

**Note:**

The purpose of this traffic control plan is to establish traffic control for Sunrise Meadow Drive Street Dedication.

Drawn By: L. Brdecka  
Date: 1-10-12  
Approved By: Nathan Hatcher  
Date: 1-10-12  
Scale

1" = 200'-0"

**Sunrise Meadow Drive STD.  
Control Map and  
Traffic Sign Layout**

Fort Bend County Engineering Dept.  
1124 Blume Road  
Rosenberg, Texas 77471