

FORT BEND COUNTY ENGINEERING

Fort Bend County, Texas

D. Jesse Hegemier
County Engineer

September 1, 2011

Commissioner W. A. "Andy" Meyers
Fort Bend County Precinct 3
22333 Grand Corner Drive
Katy, Texas 77494

**RE: Long Meadow Farms, Section 13 -Traffic Control Plan
Long Meadow Farms, Section 15**

Dear Commissioner:

Fort Bend County Engineering has completed and recommends approval of the traffic control plans for the above referenced subdivisions. The public hearing date for acceptance of the plans is being scheduled.

A copy of the traffic control plan is attached for your review. If you should have any questions, please give me a call.

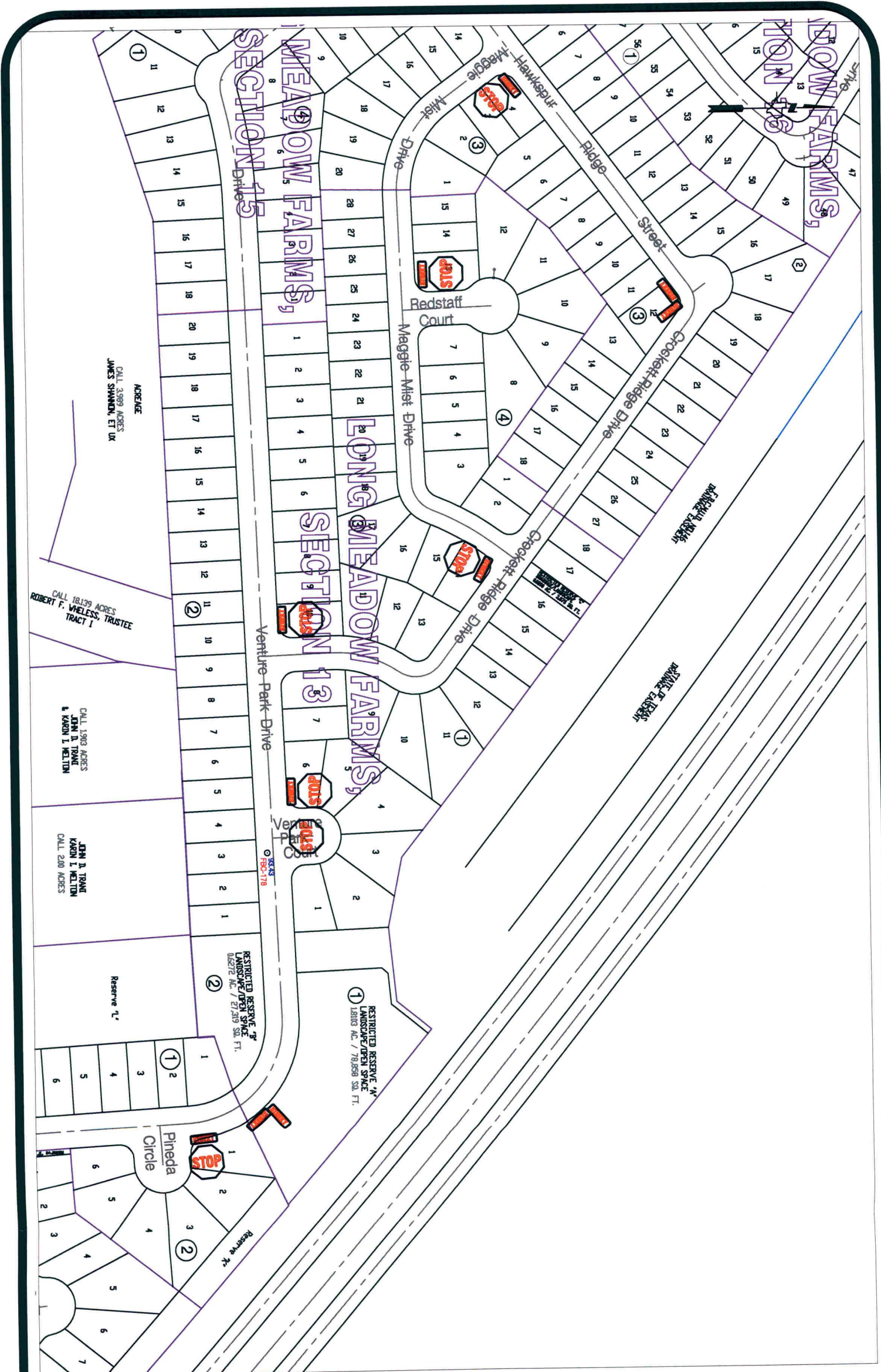
Sincerely,



Steven L. Evans
Assistant to County Engineer

SLE/mjs

cc: Judge Robert E. Hebert, County Judge
Marc Grant - FBC Road & Bridge
Marc Grant - Signage Department
File



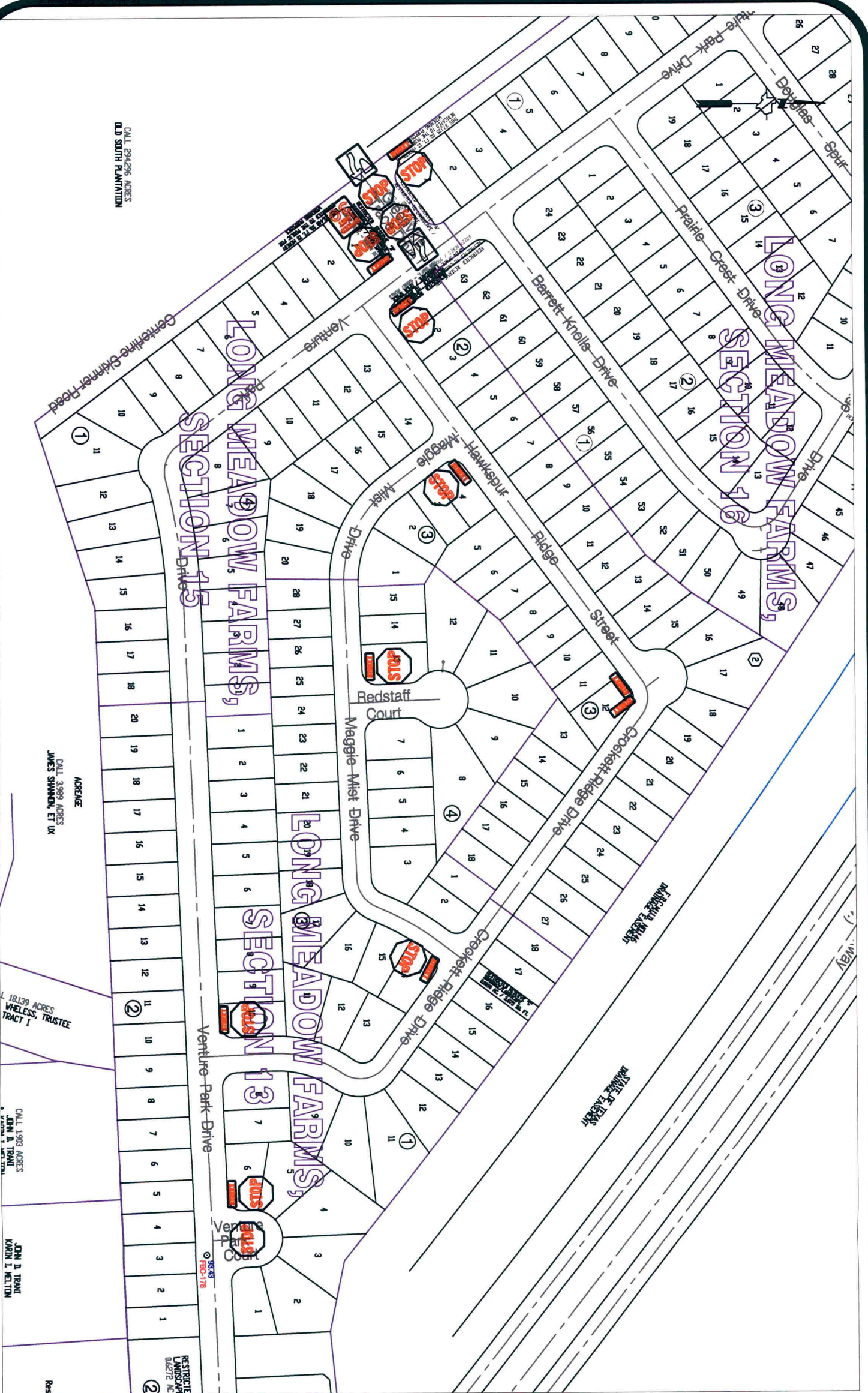
Note:

The purpose of this traffic control plan is to establish traffic control for Long Meadow Farms, Section 13.

Drawn By: L. Brdecka
 Date: 8-31-11
 Approved By: Steve Evans
 Date: 8-31-11
 Scale
 1" = 200'-0"

**Long Meadow Farms, Section 13
 Control Map and
 Traffic Sign Layout**

Fort Bend County Engineering Dept.
 1124 Blume Road
 Rosenberg, Texas 77471



CALL 894296 ADRES
O.D SOUTH PLANTATION

ACREAGE
CALL 3989 ADRES
JAMES SHANNON, ET UX

1.18139 ACRES
WHEELS, TRUSTEE
TRACT 1

CALL 1593 ADRES
JOHN D. TRANT
KARON L. HELTON

CALL 1593 ADRES
JOHN D. TRANT
KARON L. HELTON

Note:

The purpose of this traffic control plan is to establish traffic control for Long Meadow Farms, Section 15.

Drawn By: L. Brdecka

Date: 8-31-11

Approved By: Steve Evans

Date: 8-31-11

Scale

1" = 200'-0"

**Long Meadow Farms, Section 15
Control Map and
Traffic Sign Layout**

Fort Bend County Engineering Dept.
1124 Blume Road
Rosenberg, Texas 77471