

FORT BEND COUNTY ENGINEERING
Fort Bend County, Texas

D. Jesse Hegemier
County Engineer

June 13, 2011

Commissioner W. A. "Andy" Meyers
Fort Bend County Precinct 3
1809 Eldridge Road
Sugar Land, Texas 77478

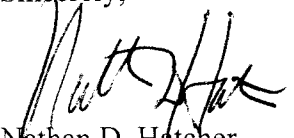
RE: Cinco Ranch Southwest, Section 31 -Traffic Control Plan
Cinco Ranch Southwest, Section 38
Cinco Ranch Southwest, Section 41

Dear Commissioner:

Fort Bend County Engineering has completed and recommends approval of the traffic control plans for the above referenced subdivisions. The public hearing date for acceptance of the plans is being scheduled.

A copy of the traffic control plan is attached for your review. If you should have any questions, please give me a call.

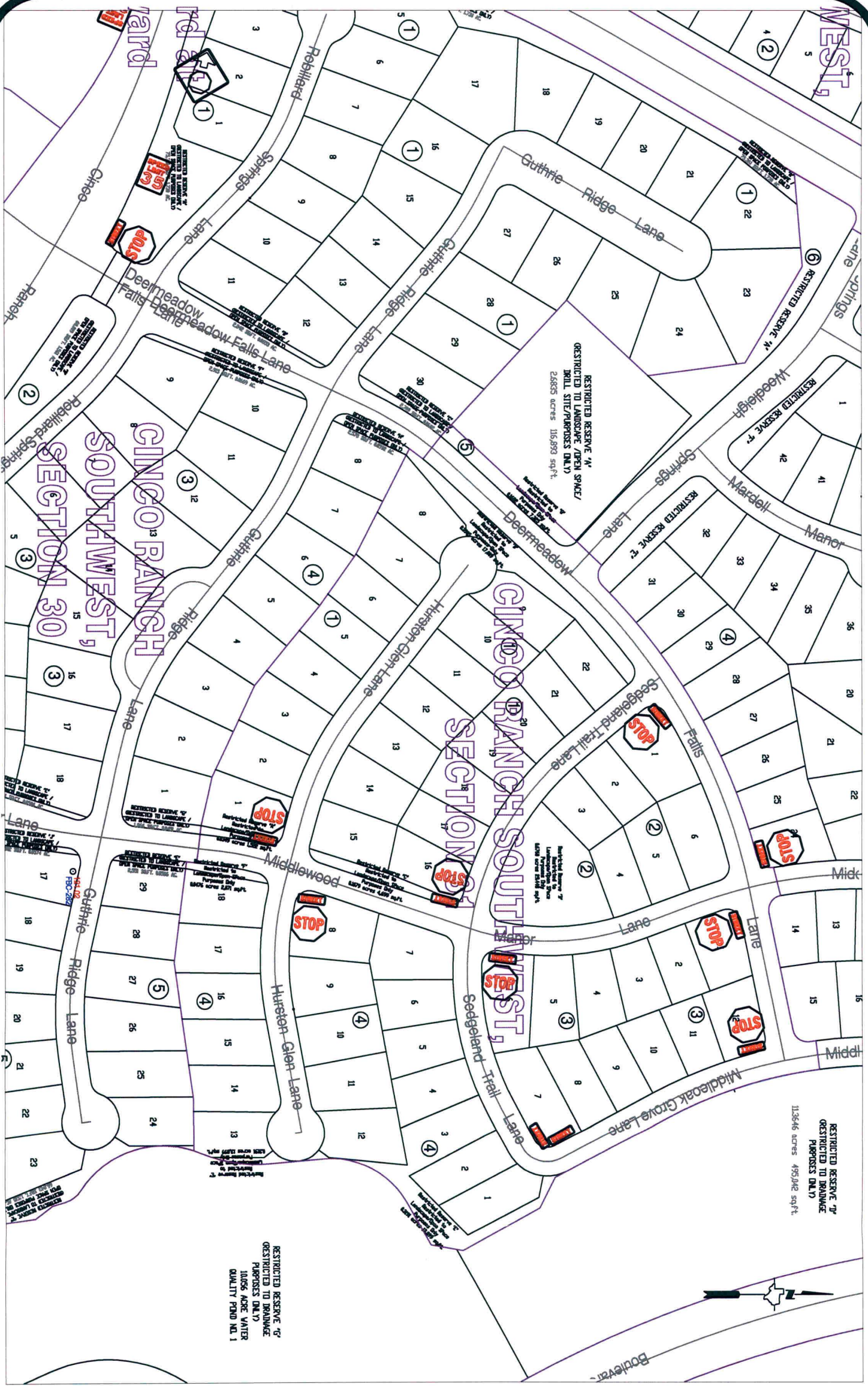
Sincerely,



Nathan D. Hatcher
Assistant to County Engineer

NDH/mjs

cc: Judge Robert E. Hebert, County Judge
Marc Grant - FBC Road & Bridge
Marc Grant - Signage Department
File



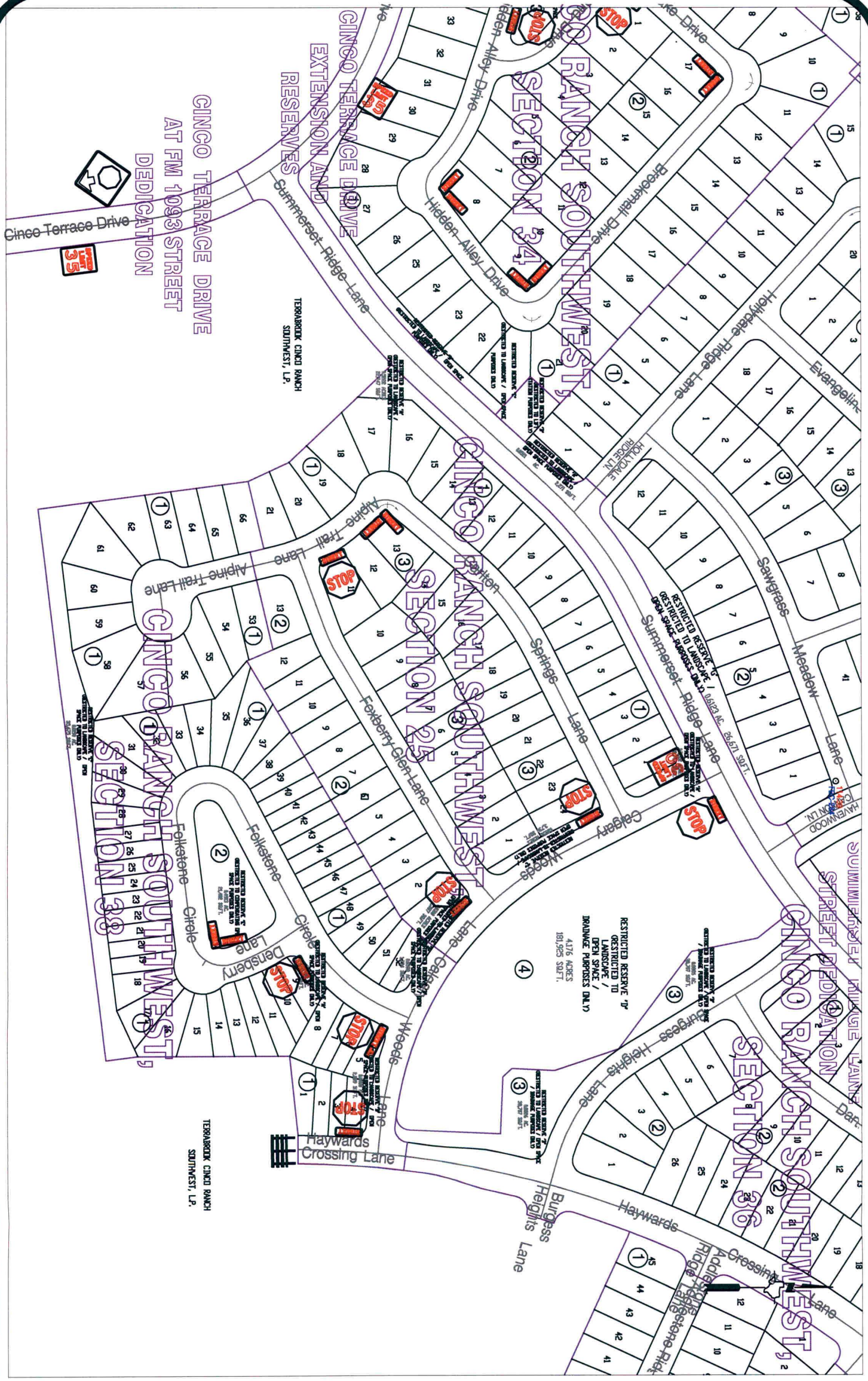
Note:

The purpose of this traffic control plan is to establish traffic control for Cinco Ranch Southwest, Section 31.

Drawn By: L. Brdecka
 Date: 6-9-11
 Approved By: Nathan Hatcher
 Date: 6-9-11
 Scale
 1" = 200'-0"

**Cinco Ranch Southwest, Section 31
 Control Map and
 Traffic Sign Layout**

Fort Bend County Engineering Dept.
 1124 Blume Road
 Rosenberg, Texas 77471



Note:

The purpose of this traffic control plan is to establish traffic control for Cinco Ranch Southwest, Section 38.

Drawn By: L. Brdecka

Date: 6-9-11

Approved By: Nathan Hatcher

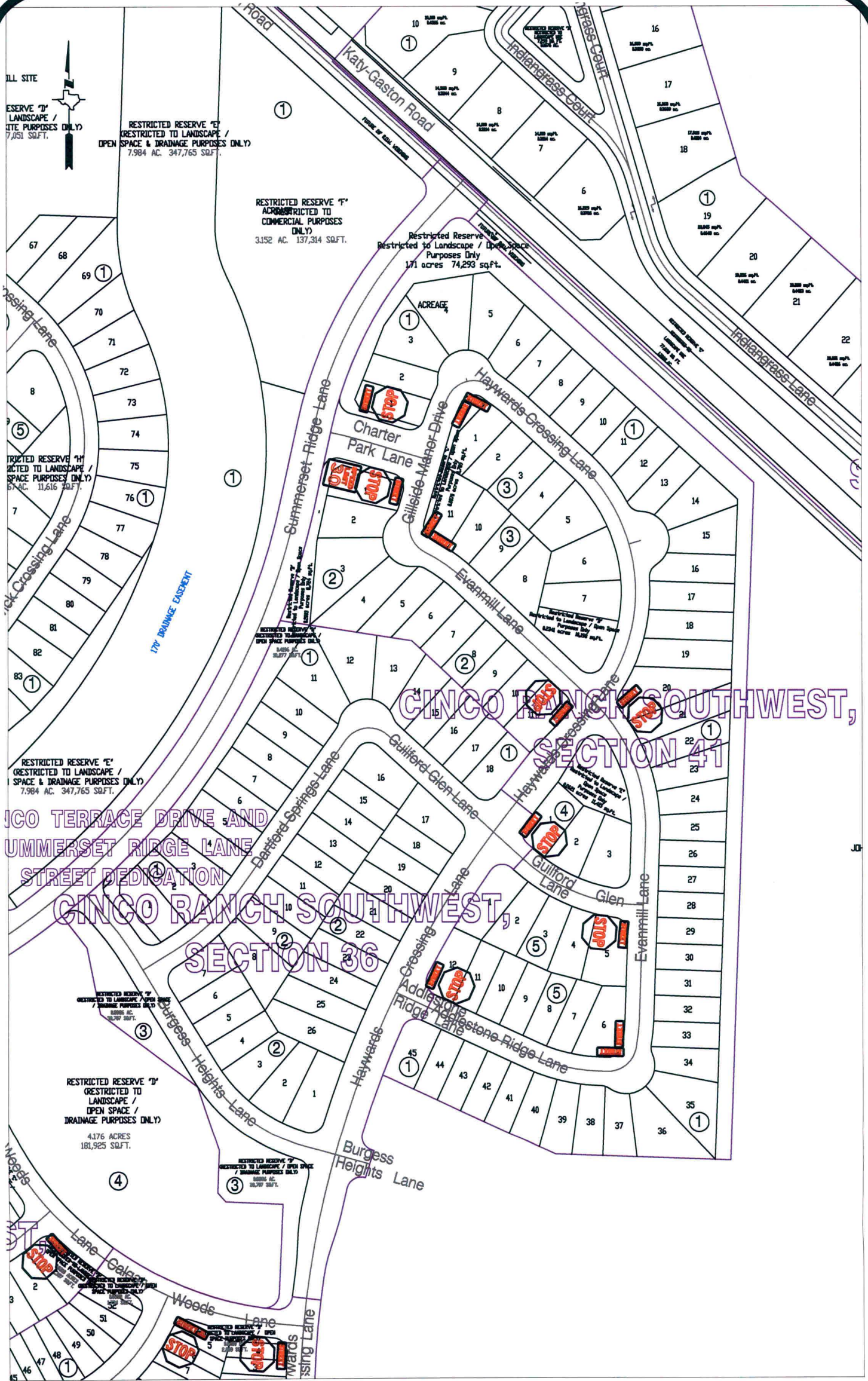
Date: 6-9-11

Scale

1" = 200'-0"

**Cinco Ranch Southwest, Section 38
Control Map and
Traffic Sign Layout**

Fort Bend County Engineering Dept.
1124 Blume Road
Rosenberg, Texas 77471



RESTRICTED RESERVE "D"
 (RESTRICTED TO LANDSCAPE /
 OPEN SPACE & DRAINAGE PURPOSES ONLY)
 7,851 SQ.FT.

RESTRICTED RESERVE "E"
 (RESTRICTED TO LANDSCAPE /
 OPEN SPACE & DRAINAGE PURPOSES ONLY)
 7,984 AC. 347,765 SQ.FT.

RESTRICTED RESERVE "F"
 (RESTRICTED TO COMMERCIAL PURPOSES ONLY)
 3,152 AC. 137,314 SQ.FT.

Restricted Reserve
 Restricted to Landscape / Open Space
 Purposes Only
 171 acres 74,293 sq.ft.

RESTRICTED RESERVE "H"
 (RESTRICTED TO LANDSCAPE /
 OPEN SPACE & DRAINAGE PURPOSES ONLY)
 6.5 AC. 11,616 SQ.FT.

170' DRAINAGE EASEMENT

RESTRICTED RESERVE "E"
 (RESTRICTED TO LANDSCAPE /
 OPEN SPACE & DRAINAGE PURPOSES ONLY)
 7,984 AC. 347,765 SQ.FT.

CINCO TERRACE DRIVE AND
 SUMMERSSET RIDGE LANE
 STREET DEDICATION

CINCO RANCH SOUTHWEST,
 SECTION 36

CINCO RANCH SOUTHWEST,
 SECTION 41

RESTRICTED RESERVE "D"
 (RESTRICTED TO LANDSCAPE /
 OPEN SPACE & DRAINAGE PURPOSES ONLY)
 8,888 AC. 387,887 SQ.FT.

RESTRICTED RESERVE "D"
 (RESTRICTED TO LANDSCAPE /
 OPEN SPACE & DRAINAGE PURPOSES ONLY)
 4,176 ACRES
 181,925 SQ.FT.

RESTRICTED RESERVE "D"
 (RESTRICTED TO LANDSCAPE / OPEN SPACE
 & DRAINAGE PURPOSES ONLY)
 8,888 AC. 387,887 SQ.FT.

Note:

The purpose of this traffic control plan is to establish traffic control for Cinco Ranch Southwest, Section 41.

Drawn By: L. Brdecka
 Date: 6-9-11
 Approved By: Nathan Hatcher
 Date: 6-9-11
 Scale
 1" = 200'-0"

Cinco Ranch Southwest, Section 41
Control Map and
Traffic Sign Layout
 Fort Bend County Engineering Dept.
 1124 Blume Road
 Rosenberg, Texas 77471