

FORT BEND COUNTY ENGINEERING

Fort Bend County, Texas

D. Jesse Hegemier
County Engineer

March 8, 2011

Commissioner W. A. "Andy" Meyers
Fort Bend County Precinct 3
1809 Eldridge Road
Sugar Land, Texas 77478

**RE: Revised Traffic Control Plan - Bellaire Boulevard from Canal Road to FM723 to
establish school zones for Westlake Lutheran Academy School**

Dear Commissioner:

Fort Bend County Engineering has completed and recommends approval of the traffic control plan for the above referenced. The public hearing date for acceptance of the plan is being scheduled.

A copy of the traffic control plan is attached for your review. If you should have any questions, please give me a call.

Sincerely,



Steven L. Evans
Assistant to County Engineer

SLE/mjs

cc: Judge Robert E. Hebert, County Judge
Marc Grant - FBC Road & Bridge
Marc Grant - Signage Department
File

Fm 723
(120' R.o.w.)



Signalized
Intersection

Bellaire Boulevard



BELLAIRE BOULEVARD
CANAL ROAD TO F.M. 723

Bellaire Boulevard



Sheet 1 of 5

Note:

The purpose of this traffic control plan is to revise traffic control for Bellaire Boulevard Canal Road to F.M. 723 with the establishment of a school zone.

Drawn By: L. Brdecka

Date: 3-11-11

Approved By: Steven L. Evans

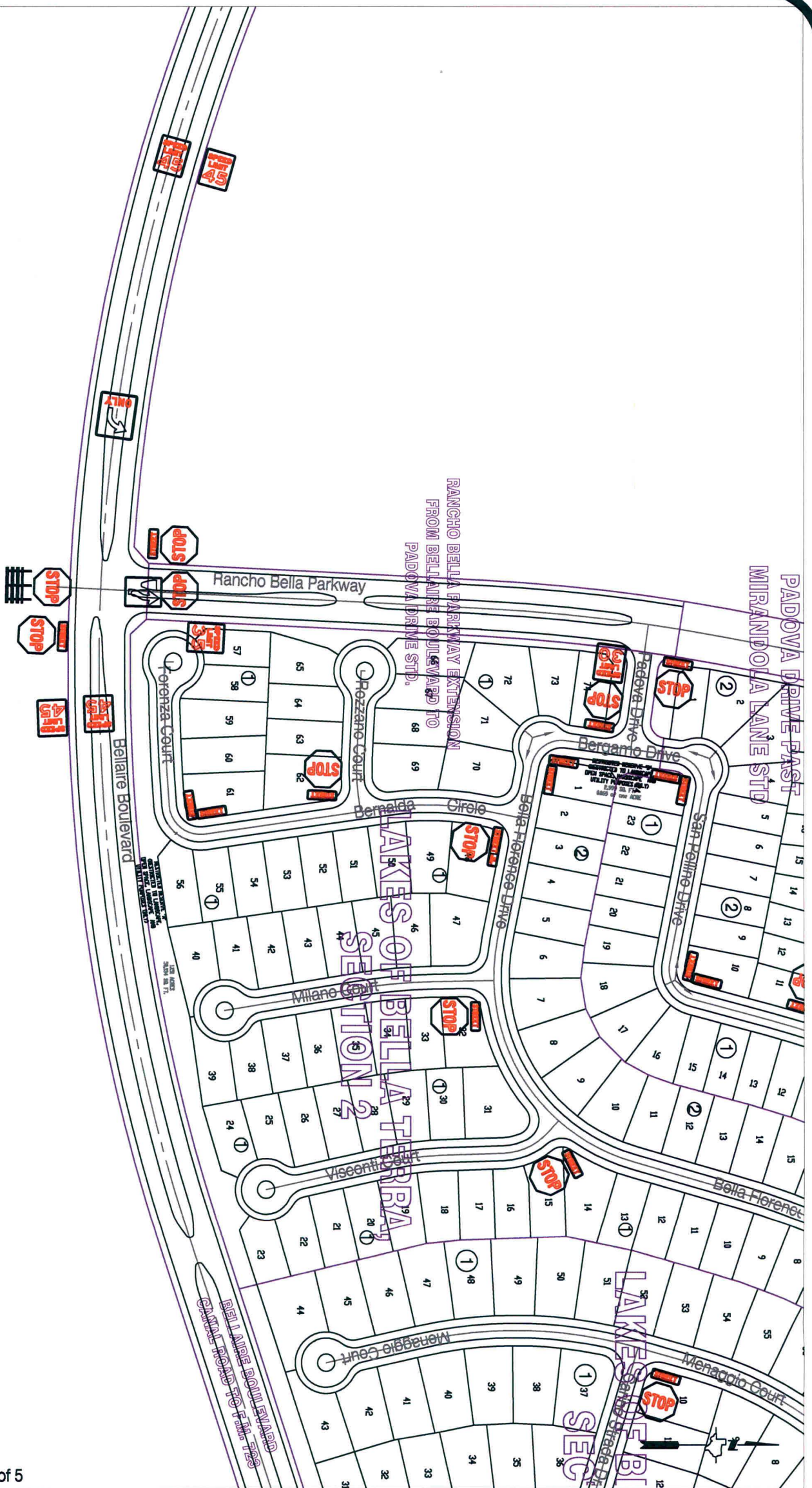
Date: 3-11-11

Scale

1" = 200'-0"

Bellaire Boulevard Canal Road to
F.M. 723
Control Map and
Traffic Sign Layout

Fort Bend County Engineering Dept.
1124 Blume Road
Rosenberg, Texas 77471



Sheet 2 of 5

Note:

The purpose of this traffic control plan is to revise traffic control for Bellaire Boulevard Canal Road to F.M. 723 with the establishment of a school zone.

Drawn By: L. Brdecka

Date: 3-11-11

Approved By: Steven L. Evans

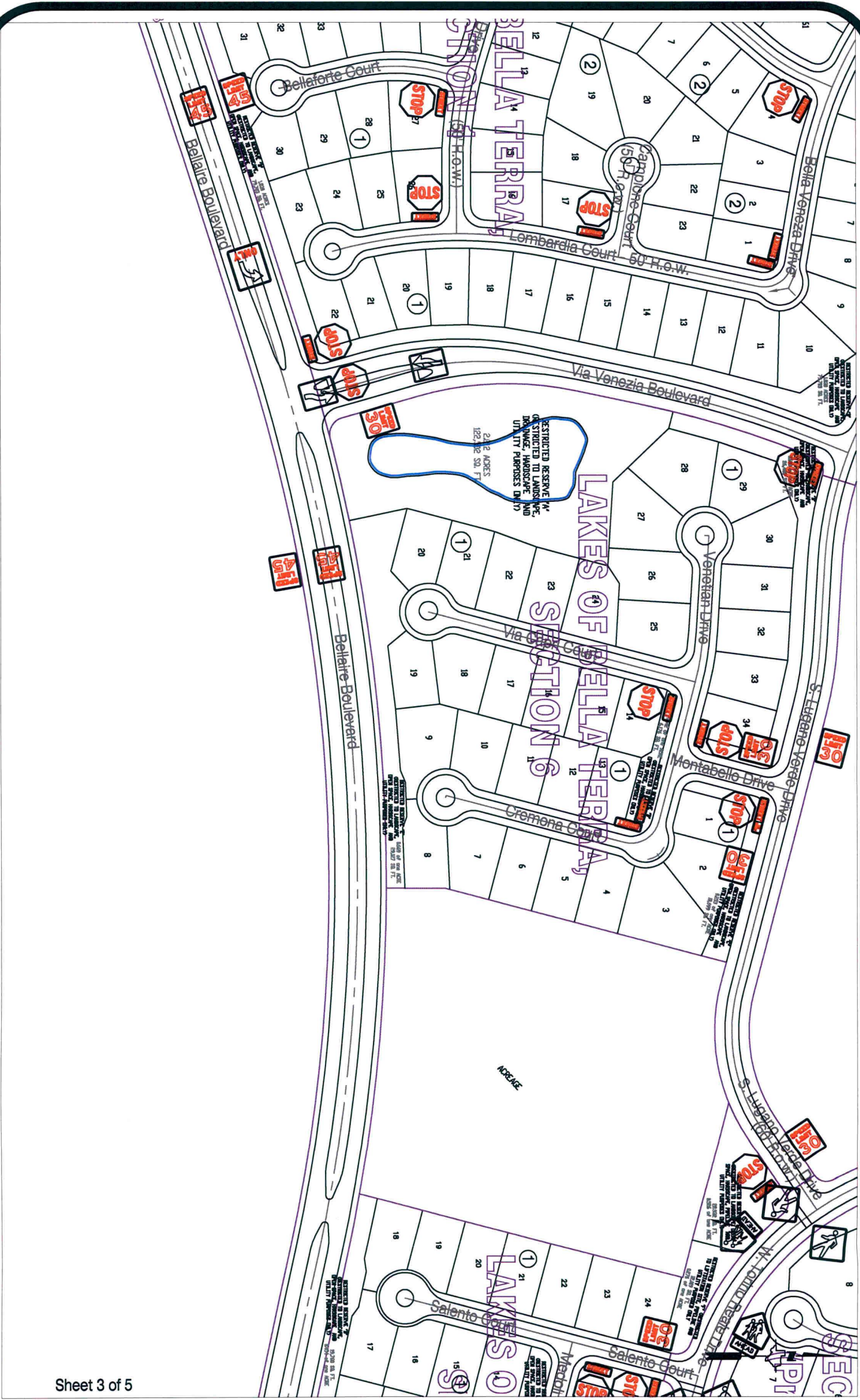
Date: 3-11-11

Scale

1" = 200'-0"

**Bellaire Boulevard Canal Road to
F.M. 723
Control Map and
Traffic Sign Layout**

Fort Bend County Engineering Dept.
1124 Blume Road
Rosenberg, Texas 77471



Sheet 3 of 5

Note:

The purpose of this traffic control plan is to revise traffic control for Bellaire Boulevard Canal Road to F.M. 723 with the establishment of a school zone.

Drawn By: L. Brdecka

Date: 3-11-11

Approved By: Steven L. Evans

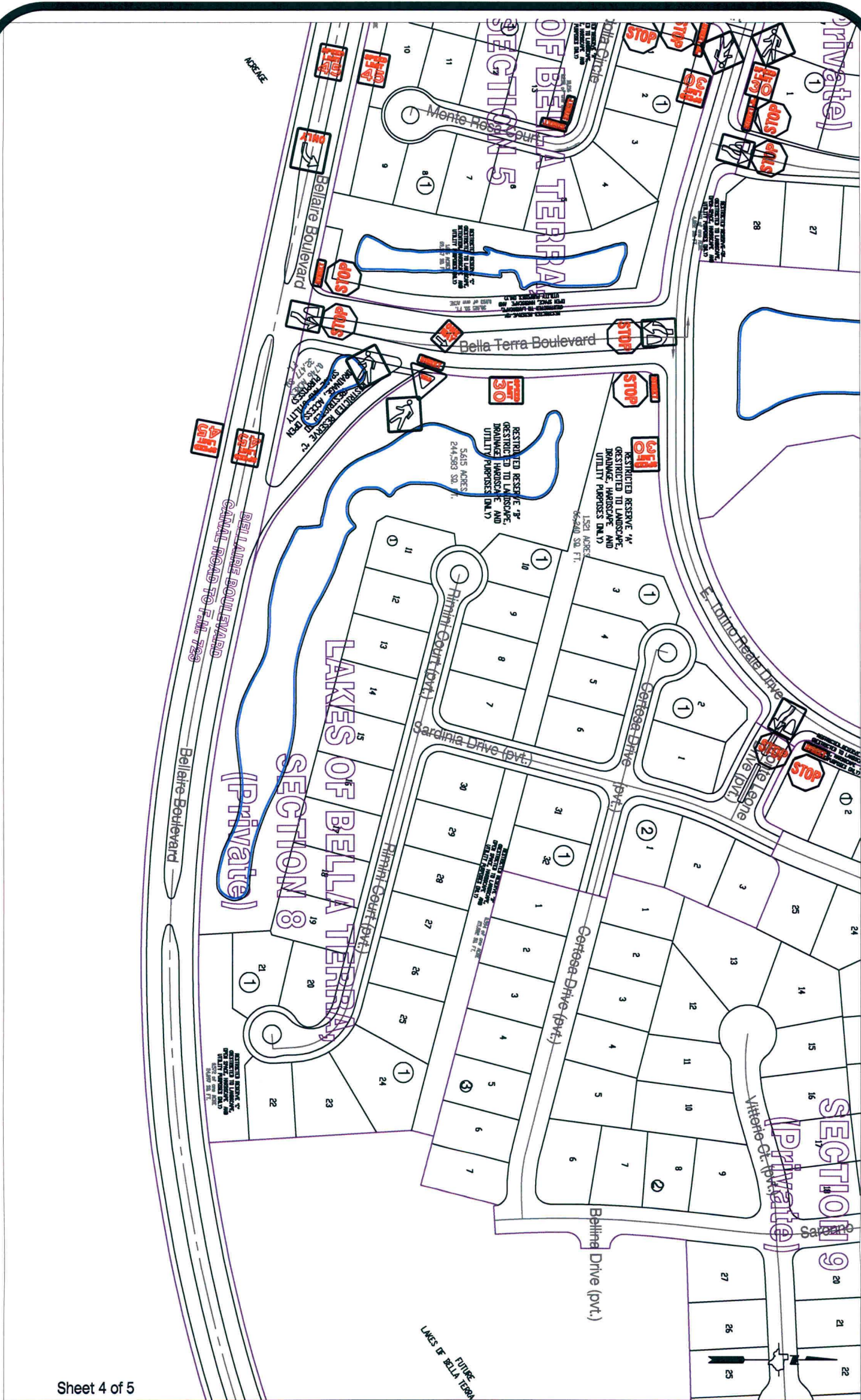
Date: 3-11-11

Scale

1" = 200'-0"

Bellaire Boulevard Canal Road to
F.M. 723
Control Map and
Traffic Sign Layout

Fort Bend County Engineering Dept.
1124 Blume Road
Rosenberg, Texas 77471



Sheet 4 of 5

Note:

The purpose of this traffic control plan is to revise traffic control for Bellaire Boulevard Canal Road to F.M. 723 with the establishment of a school zone.

Drawn By: L. Brdecka

Date: 3-11-11

Approved By: Steven L. Evans

Date: 3-11-11

Scale

1" = 200'-0"

Bellaire Boulevard Canal Road to

F.M. 723

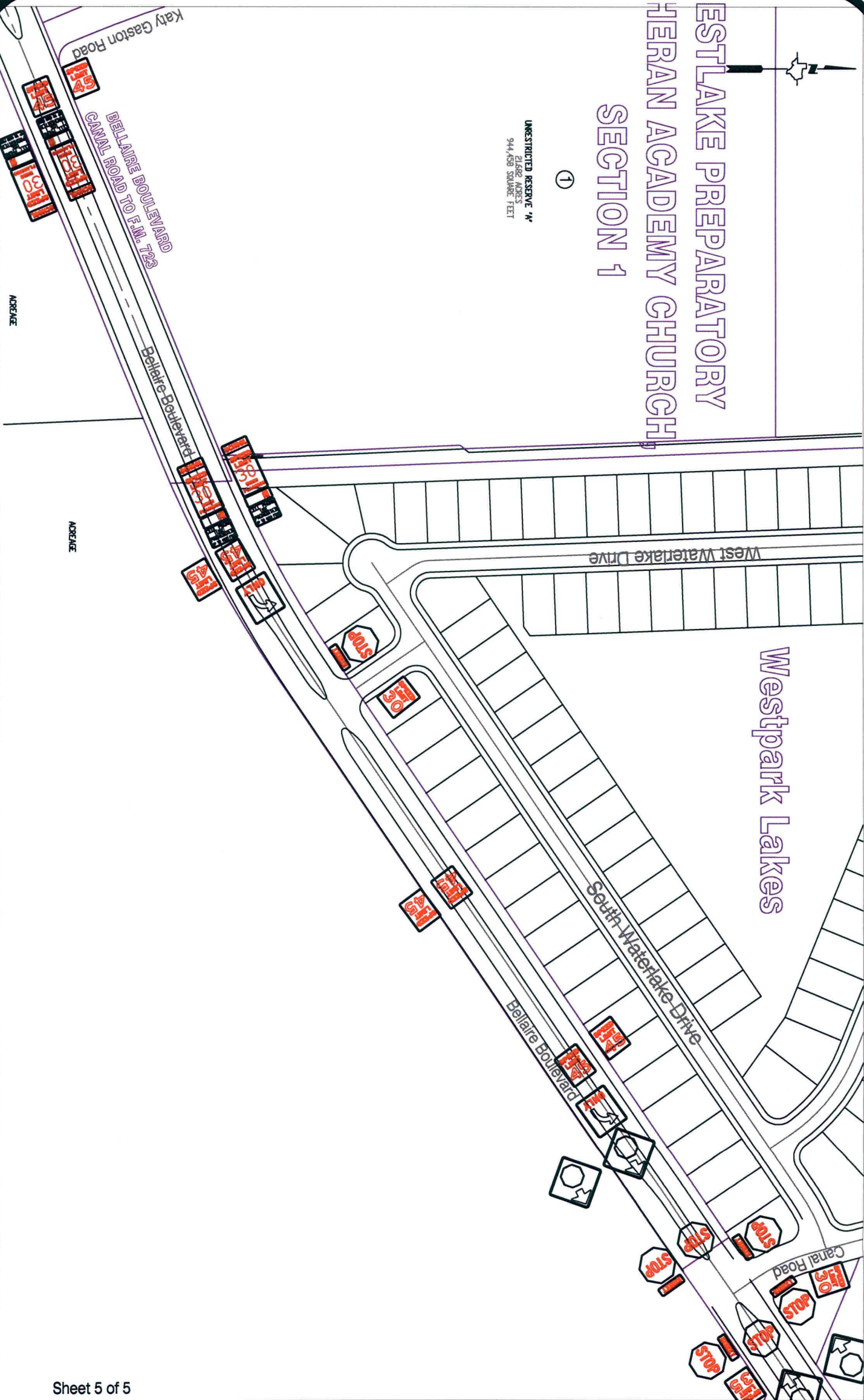
Control Map and

Traffic Sign Layout

Fort Bend County Engineering Dept.

1124 Blume Road

Rosenberg, Texas 77471



Sheet 5 of 5

Note:

The purpose of this traffic control plan is to revise traffic control for Bellaire Boulevard Canal Road to F.M. 723 with the establishment of a school zone.

Drawn By: L. Brdecka

Date: 3-11-11

Approved By: Steven L. Evans

Date: 3-11-11

Scale

1" = 200'-0"

Bellaire Boulevard Canal Road to
F.M. 723
Control Map and
Traffic Sign Layout

Fort Bend County Engineering Dept.
1124 Blume Road
Rosenberg, Texas 77471