

5A

FORT BEND COUNTY ENGINEERING

Fort Bend County, Texas

D. Jesse Hegemier
County Engineer

January 27, 2011

Commissioner W. A. "Andy" Meyers
Fort Bend County Precinct 3
1809 Eldridge Road
Sugar Land, Texas 77478

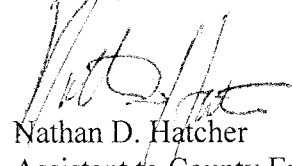
**RE: Firethorne, Section 15 -Traffic Control Plan
Firethorne, Section 18**

Dear Commissioner:

Fort Bend County Engineering has completed and recommends approval of the traffic control plan for the above referenced subdivisions. The public hearing date for acceptance of the plans is being scheduled.

A copy of the traffic control plan is attached for your review. If you should have any questions, please give me a call.

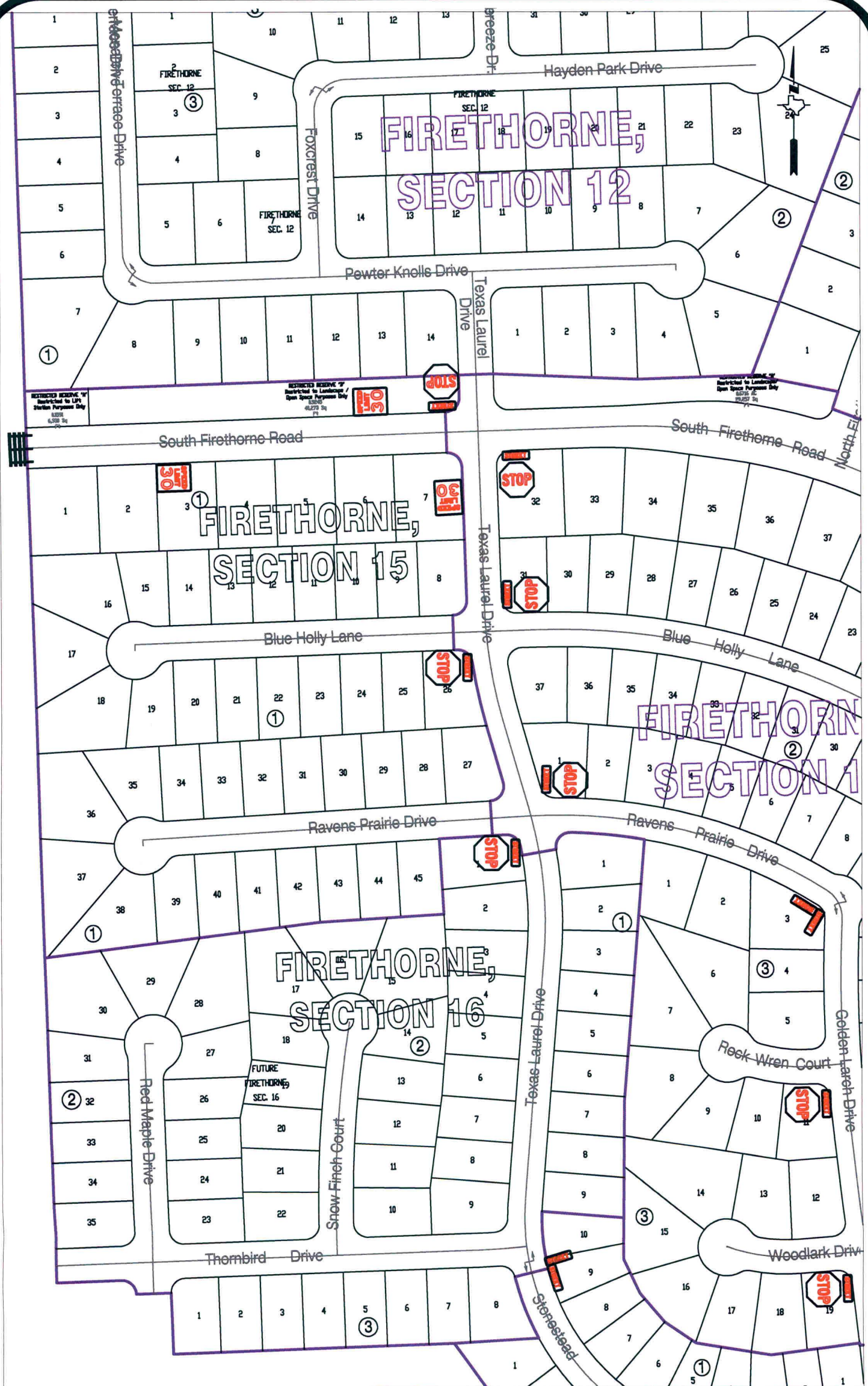
Sincerely,



Nathan D. Hatcher
Assistant to County Engineer

NDH/mjs

cc: Judge Robert E. Hebert, County Judge
Marc Grant - FBC Road & Bridge
Marc Grant - Signage Department
File



Note:

The purpose of this traffic control plan is to establish traffic control for Firethorne, Section 15.

Drawn By: L. Brdecka

Date: 1-27-11

Approved By: Nathan Hatcher

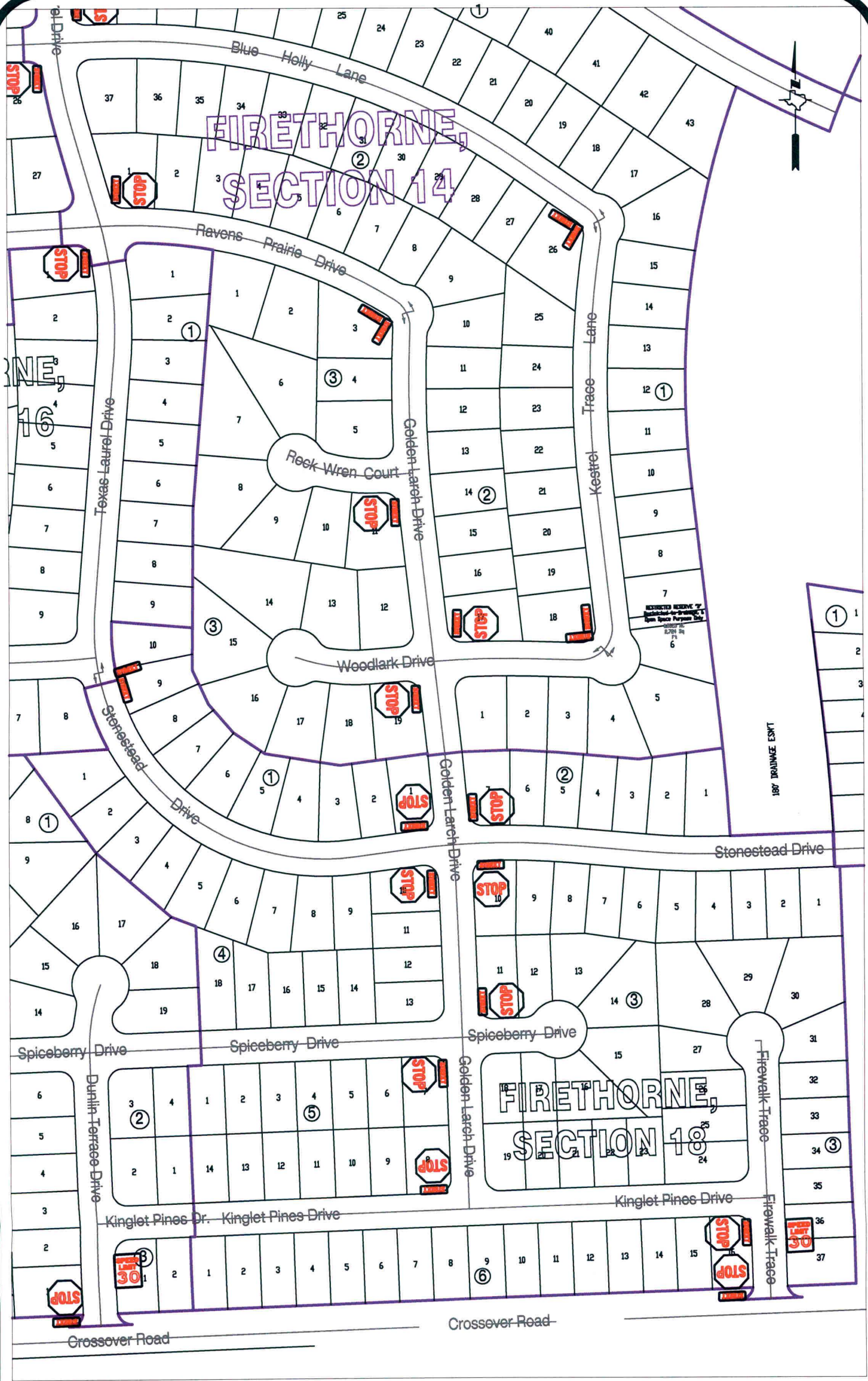
Date: 1-27-11

Scale

1" = 200'-0"

**Firethorne, Section 15
Control Map and
Traffic Sign Layout**

Fort Bend County Engineering Dept.
1124 Blume Road
Rosenberg, Texas 77471



Note:

The purpose of this traffic control plan is to establish traffic control for Firethorne, Section 18.

Drawn By: L. Brdecka
Date: 1-27-11
Approved By: Nathan Hatcher
Date: 1-27-11
Scale
1" = 200'-0"

**Firethorne, Section 18
Control Map and
Traffic Sign Layout**

Fort Bend County Engineering Dept.
1124 Blume Road
Rosenberg, Texas 77471