

**FORT BEND COUNTY ENGINEERING**

Fort Bend County, Texas

D. Jesse Hegemier  
County Engineer

December 3, 2010

Commissioner W. A. "Andy" Meyers  
Fort Bend County Precinct 3  
22333 Grand Corner Drive  
Katy, Texas 77494

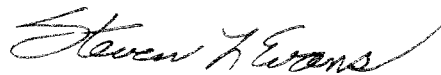
**RE: Waterside Estates, Sec 1 Revised Traffic Control Plan to Establish "No Parking During School Hours" on Richland Creek Lane from Waterside Estates Drive to Edge Mountain Court**

Dear Commissioner:

Fort Bend County Engineering has completed and recommends approval of the revised traffic control plan for Waterside Estates, Sec 1 to Establish "No Parking During School Hours" on Richland Creek Lane from Waterside Estates Drive to Edge Mountain Court near Oakland Elementary School. The public hearing date for acceptance of the plans is being scheduled.

A copy of the traffic control plan is attached for your review. If you should have any questions, please give me a call.

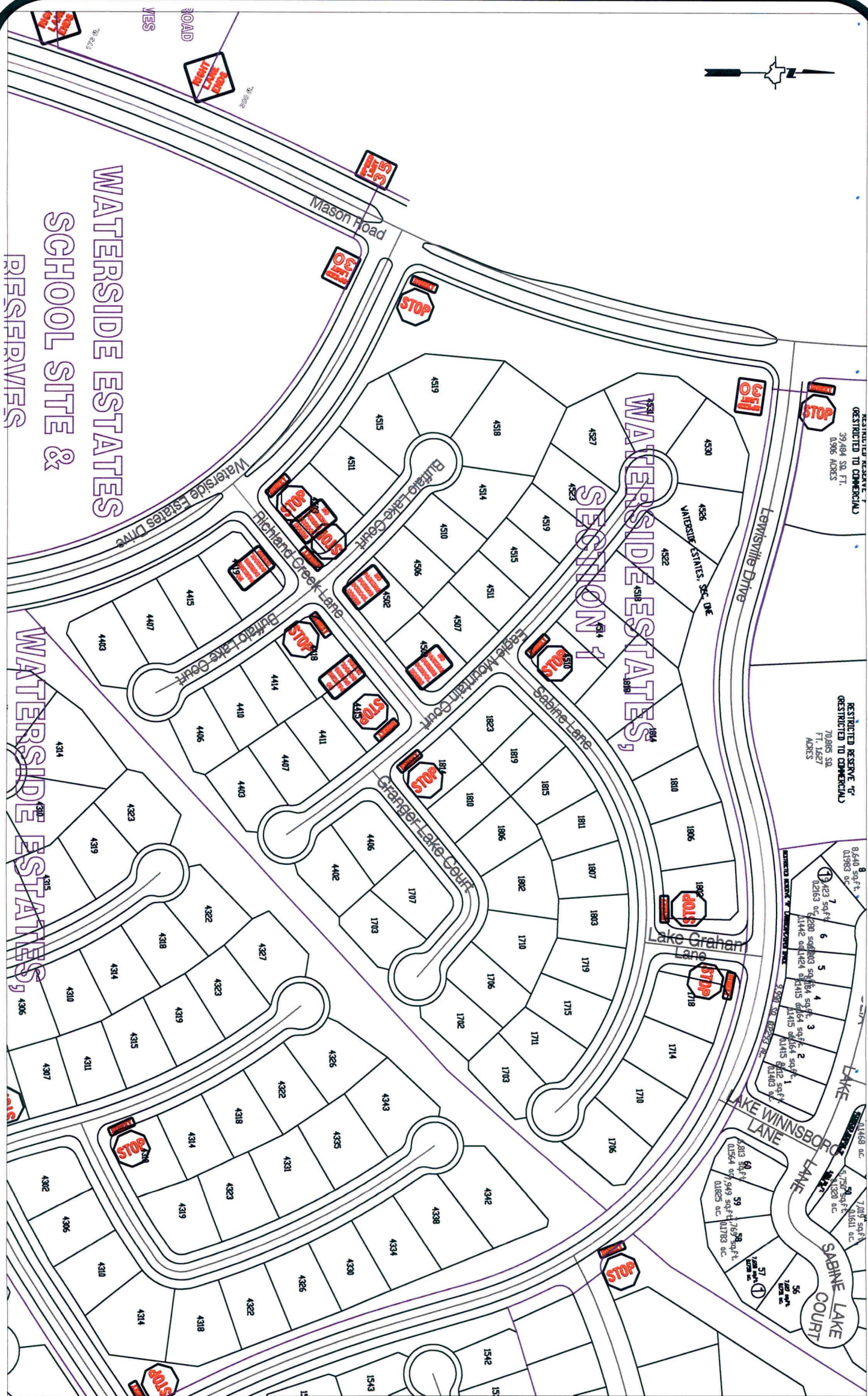
Sincerely,



Steven L. Evans  
Assistant to County Engineer

SLE/mjs

cc: Judge Robert E. Hebert, County Judge  
Marc Grant - FBC Road & Bridge  
Marc Grant - Signage Department  
File



**Note:**

The purpose of this traffic control plan is to revise traffic control for Waterside Estates, Section 1 with the addition of "No Parking During School Hours" signs as shown on drawing.

Drawn By: L. Brdecka

Date: 12-3-10

Approved By: Steve Evans

Date: 12-3-10

Scale

1" = 200'-0"

**Waterside Estates, Section 1**

**Control Map and  
Traffic Sign Layout**

Fort Bend County Engineering Dept.  
1124 Blume Road  
Rosenberg, Texas 77471