

FORT BEND COUNTY ENGINEERING

Fort Bend County, Texas

D. Jesse Hegemier
County Engineer

December 2, 2010

Commissioner Grady Prestage
Fort Bend County Precinct 2
3030 Texas Parkway, Suite 213
Missouri City, Texas 77459

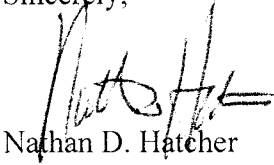
RE: Winfield Lakes, Section 13 -Traffic Control Plan

Dear Commissioner:

Fort Bend County Engineering has completed and recommends approval of the traffic control plan for the above referenced subdivision. The public hearing date for acceptance of the plan is being scheduled.

A copy of the traffic control plan is attached for your review. If you should have any questions, please give me a call.

Sincerely,



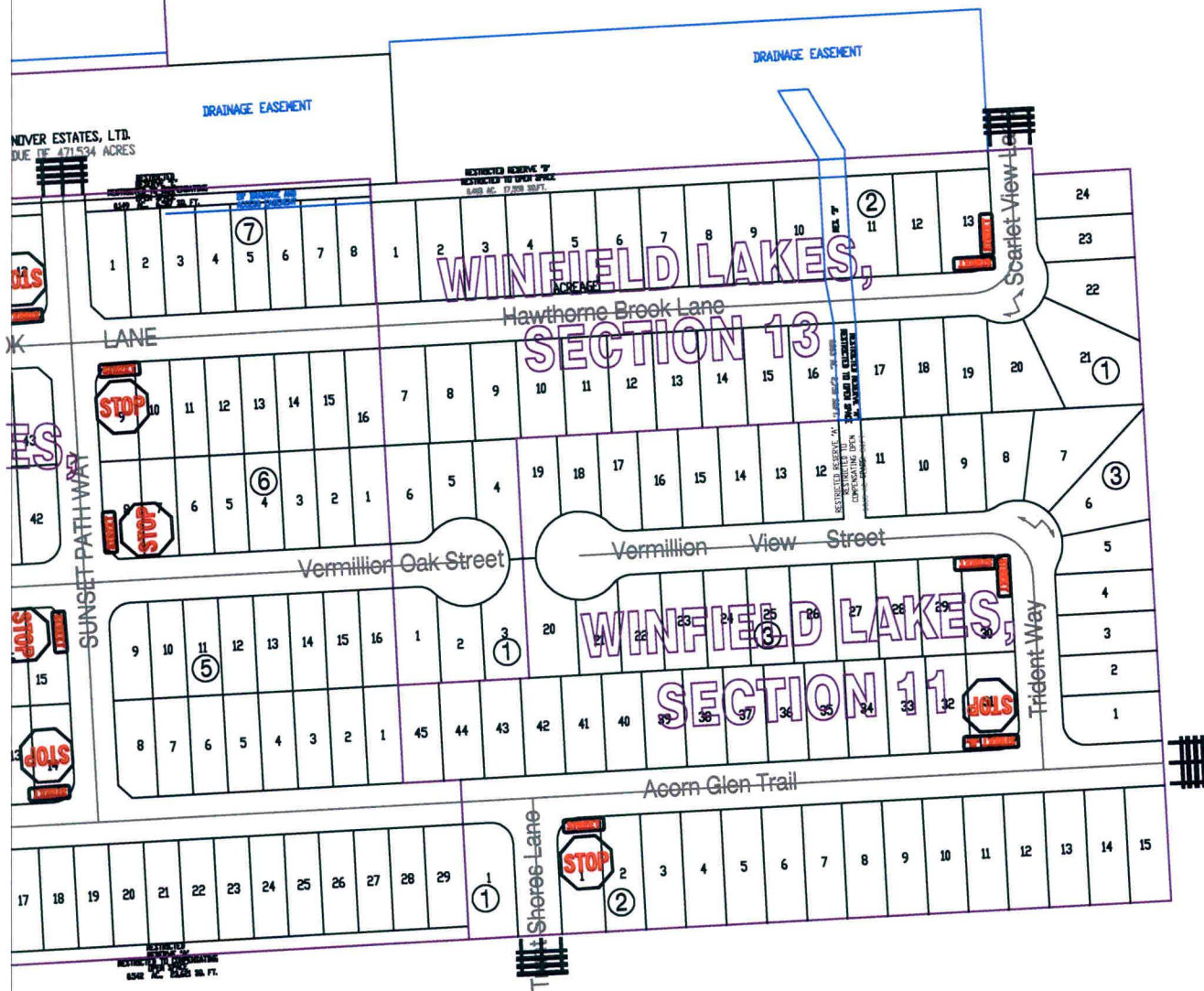
Nathan D. Hatcher
Assistant to County Engineer

NDH/mjs

cc: Judge Robert E. Hebert, County Judge
Marc Grant - FBC Road & Bridge
Marc Grant - Signage Department
File

chool

HANNOVER ESTATES, LTD.
RESIDUE OF 471.534 ACRES



ACREAGE

FRESNO LAKES, LTD.
210.744 ACRES

ACREAGE

FRESNO LAKES, LTD.

ACREAGE

Note:

The purpose of this traffic control plan is to establish traffic control for Winfield Lakes, Section 13.

Drawn By: L. Brdecka

Date: 12-1-10

Approved By: Nathan Hatcher

Date: 12-1-10

Scale

1" = 200'-0"

**Winfield Lakes, Section 13
Control Map and
Traffic Sign Layout**

Fort Bend County Engineering Dept.
1124 Blume Road
Rosenberg, Texas 77471