

5B

FORT BEND COUNTY ENGINEERING

Fort Bend County, Texas

D. Jesse Hegemier
County Engineer

April 19, 2010

Commissioner W. A. "Andy" Meyers
Fort Bend County Precinct 3
1809 Eldridge Road
Sugar Land, Texas 77478

**RE: Traffic/Safety Study
Revised Traffic Control Plan for Cinco Ranch Southwest, Sec. 1
Sendera Subdivision**

Dear Commissioner Meyers:

The Fort Bend County Engineering Department has completed its survey of the parking concerns within the referenced subdivision.

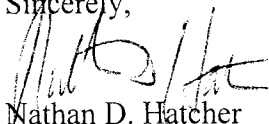
The County observed the parked vehicles from April 1st thru April 8th, and has noted approximately seven to fourteen vehicles parked at various places and at various times throughout the subdivision. It appears that 80 percent of the vehicles parked within the subdivision belong to students attending Seven Meadows High School.

As a safety concern the County Engineering Department interposes no objection to "No Parking During School Hours" signs being placed throughout the subdivision. As a reminder once these signs are installed it will affect all parked vehicles including resident vehicles as well.

The Engineering Department has prepared a traffic control plan to indicate the placement of the signs and recommends acceptance of the traffic control plan as submitted. The public hearing date for acceptance of the plan is being scheduled. A copy of the traffic control plan is attached.

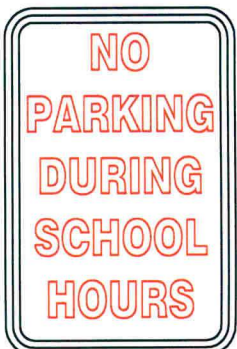
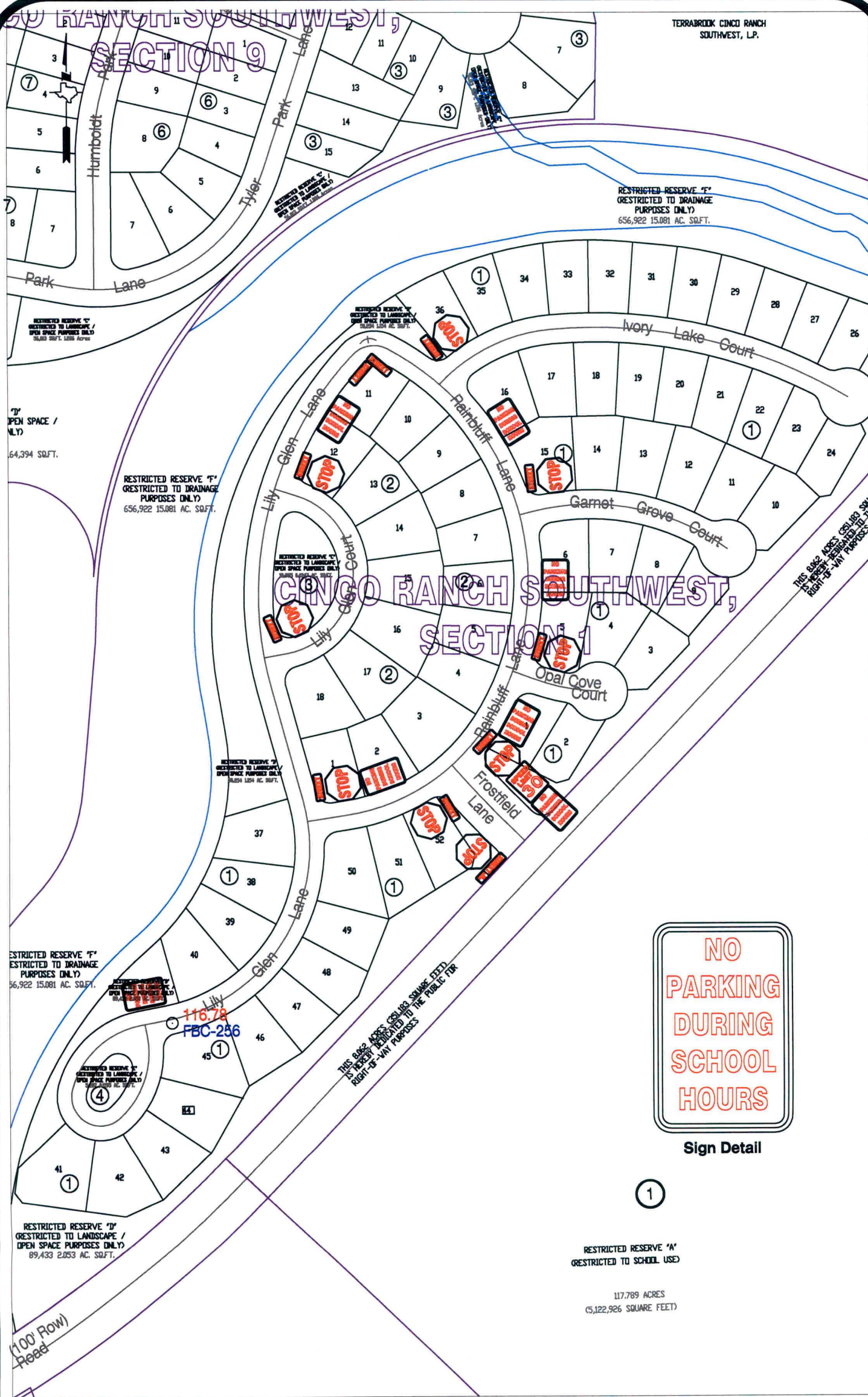
Should you have any questions please do not hesitate to call.

Sincerely,



Nathan D. Hatcher
Assistant to County Engineer

cc: Judge Robert E. Hebert, County Judge
Marc Grant - FBC Road & Bridge
Marc Grant - Signage Department
File



Sign Detail

Note:

The purpose of this traffic control plan is to revise traffic control for Cinco Ranch Southwest, Section 1 with the addition of "No Parking During School Hours" signs as indicated.

Drawn By: L. Brdecka
Date: 4-20-10
Approved By: Nathan Hatcher
Date: 4-20-10
Scale
1" = 200'-0"

Cinco Ranch Southwest, Section 1
Control Map and
Traffic Sign Layout

Fort Bend County Engineering Dept.
1124 Blume Road
Rosenberg, Texas 77471