

**FORT BEND COUNTY ENGINEERING**

Fort Bend County, Texas

D. Jesse Hegemier  
County Engineer

March 4, 2010

Commissioner W. A. "Andy" Meyers  
Fort Bend County Precinct 3  
1809 Eldridge Road  
Sugar Land, Texas 77478

**Re: Traffic/Safety Study for Tealbriar Subdivision  
Delamere Drive - Request for "No Parking Signs"**

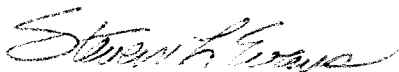
Dear Commissioner:

In your letter dated November 30, 2009, the Tealbriar HOA requested "No Parking" signs for Delamere Drive due to the overflow parking from the adjacent strip center development along Highway 6. Fort Bend Engineering has studied the problem at various times in the past few months and have determined that by placing the no parking signs will not hinder any of the established businesses in the area and will keep the entrance to Tealbriar more open to emergency vehicles. In response to the request for "No Parking" signs along Delamere Drive, Fort Bend Engineering recommends that they be installed from Highway 6 to Chalford Drive on both sides of the street.

A copy of the traffic control plan is attached for your review. The public hearing date for acceptance of the plan is being scheduled.

If you should have any questions, please contact me.

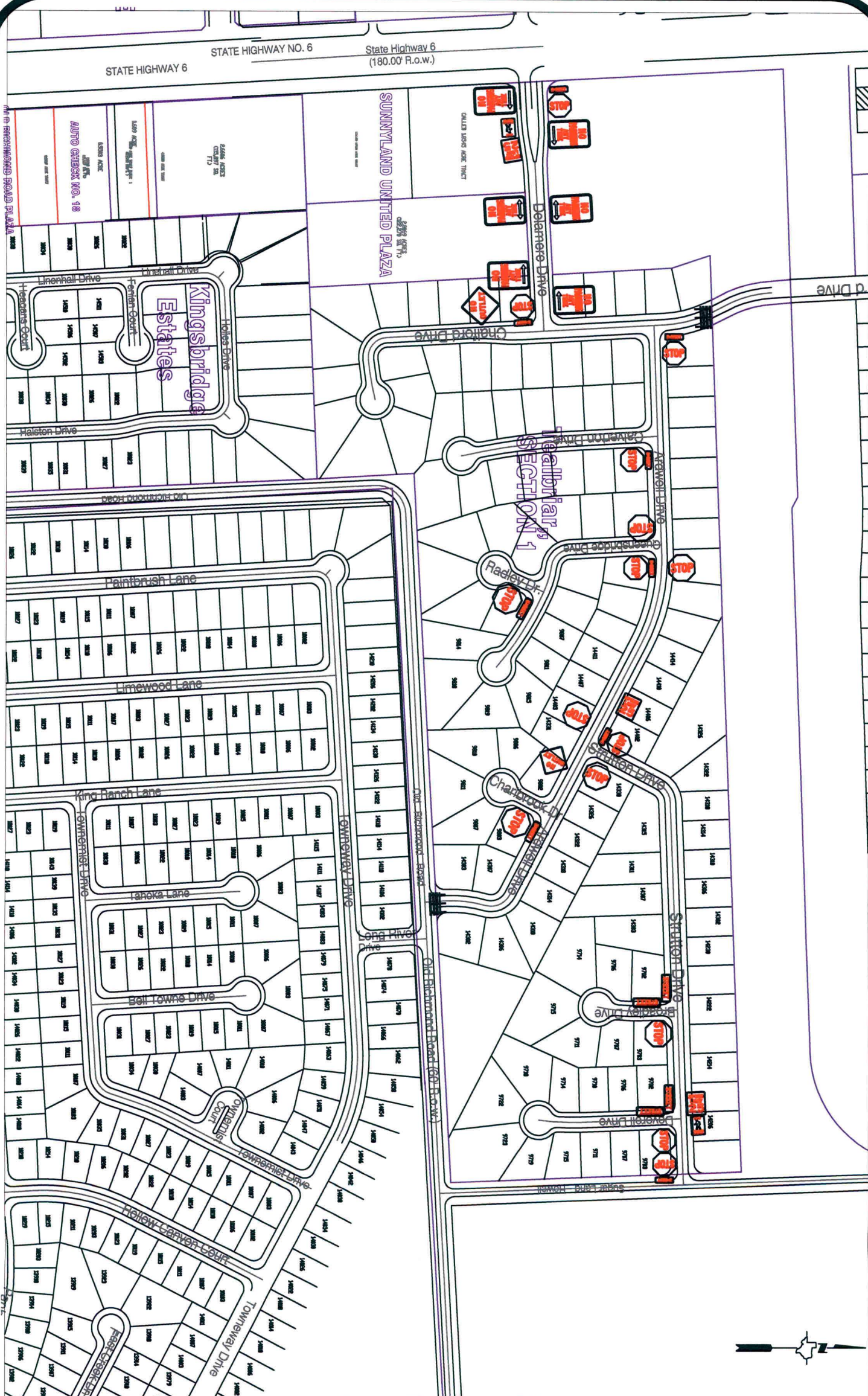
Sincerely,



Steven L. Evans  
Assistant to County Engineer

SLE/mjs

cc: Judge Robert E. Herbert, County Judge  
Marc Grant - FBC Road & Bridge  
Marc Grant - Signage Department  
File



**Note:**

The purpose of this traffic control plan is to revise traffic control for Tealbriar Subdivision with the installation of "No Parking" signs on Delamere Drive.

Drawn By: L. Brdecka

Date: 3-5-10

Approved By: Steven L. Evans

Date: 3-5-10

Scale

1" = 300'-0"

**Tealbriar Subdivision  
Control Map and  
Traffic Sign Layout**

Fort Bend County Engineering Dept.  
1124 Blume Road  
Rosenberg, Texas 77471