

5 B

FORT BEND COUNTY ENGINEERING

Fort Bend County, Texas

D. Jesse Hegemier
County Engineer

February 26, 2010

Commissioner W. A. "Andy" Meyers
Fort Bend County Precinct 3
1809 Eldridge Road
Sugar Land, Texas 77478

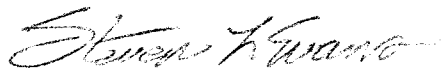
**RE: Mission Sierra, Section 1 -Traffic Control Plan
Mission Sierra, Section 4**

Dear Commissioner:

Fort Bend County Engineering has completed and recommends approval of the traffic control plans for the above referenced subdivision. The public hearing date for acceptance of the plans is being scheduled.

A copy of the traffic control plan is attached for your review. If you should have any questions, please give me a call.

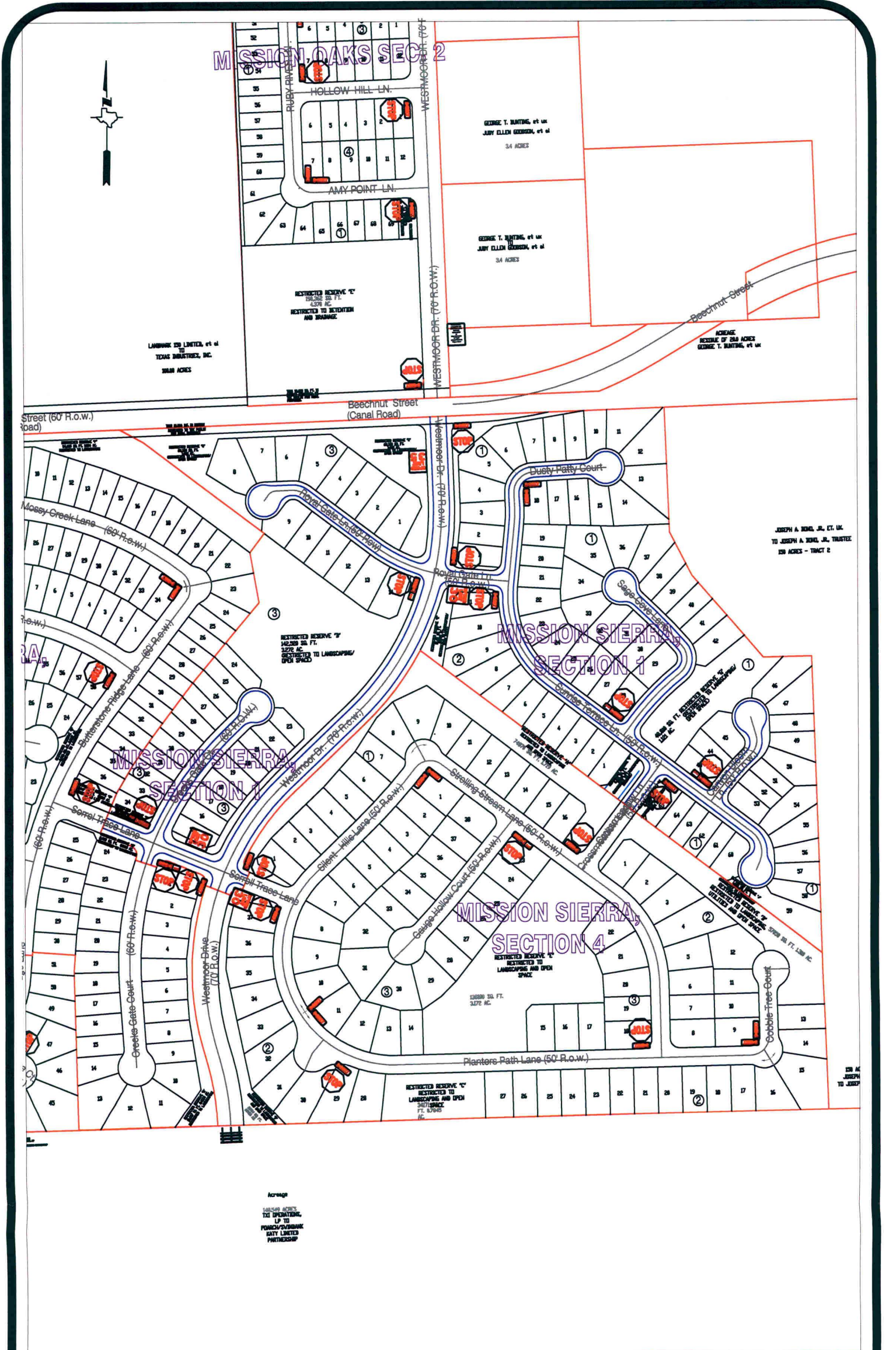
Sincerely,



Steven L. Evans
Assistant to County Engineer

SLE/mjs

cc: Judge Robert E. Hebert, County Judge
Marc Grant - FBC Road & Bridge
Marc Grant - Signage Department
File



Note:

The purpose of this traffic control plan is to establish traffic control for Missions Sierra, Section 1.

Drawn By: L. Brdecka

Date: 12-10-09

Approved By: Steven L. Evans

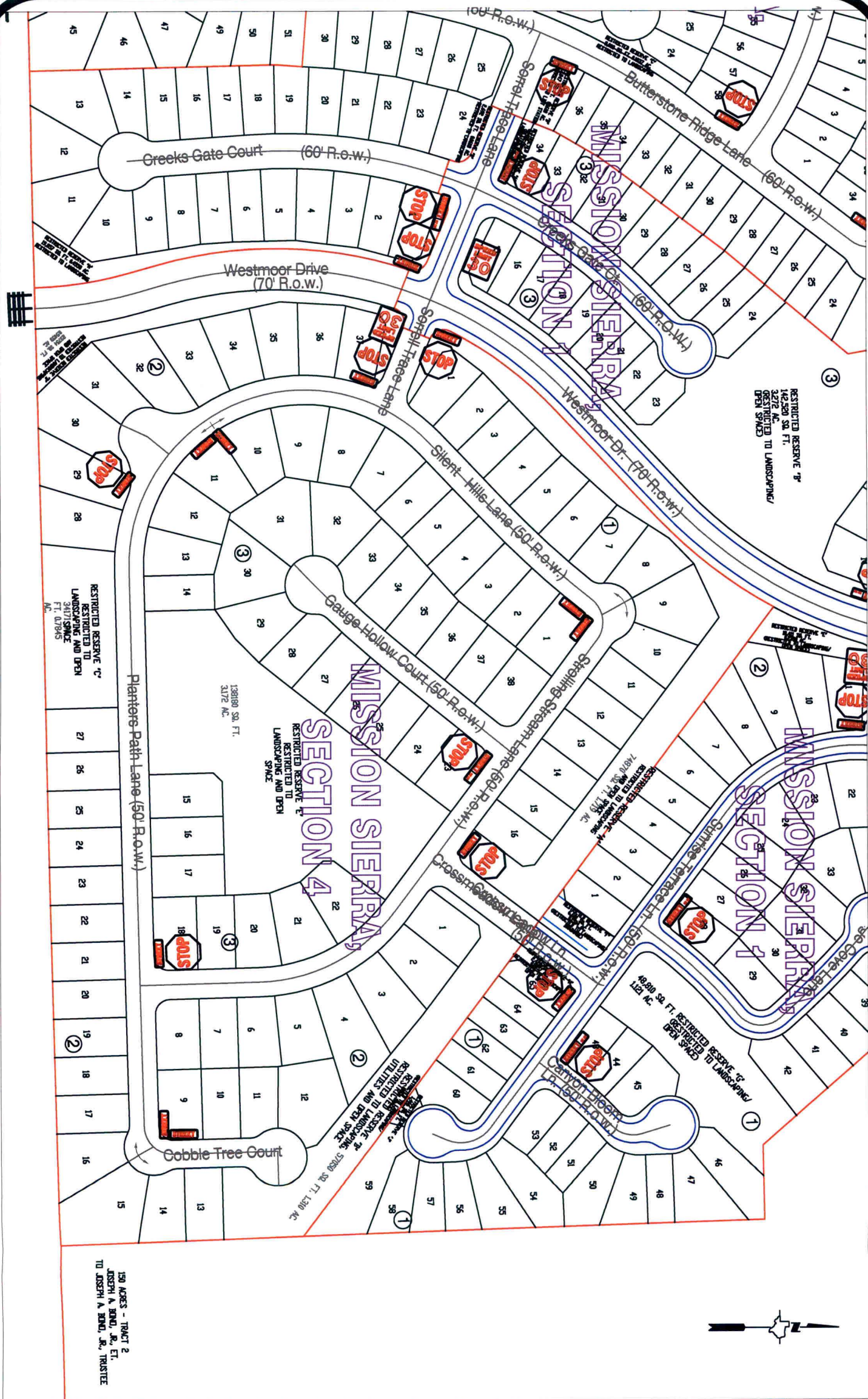
Date: 12-10-09

Scale

1" = 300'-0"

**Mission Sierra, Section 1
Control Map and
Traffic Sign Layout**

Fort Bend County Engineering Dept.
1124 Blume Road
Rosenberg, Texas 77471



150 ACRES - TRACT 2
JOSEPH A. BOND, JR., ET AL.
TO JOSEPH A. BOND, JR., TRUSTEE

Note:

The purpose of this traffic control plan is to establish traffic control for Missions Sierra, Section 4.

Drawn By: L. Brdecka

Date: 12-14-09

Approved By: Steven L. Evans

Date: 12-14-09

Scale

1" = 200'-0"

**Mission Sierra, Section 4
Control Map and
Traffic Sign Layout**

Fort Bend County Engineering Dept.
1124 Blume Road
Rosenberg, Texas 77471