



## FORT BEND COUNTY ENGINEERING

Fort Bend County, Texas

D. Jesse Hegemier  
County Engineer

January 4, 2010

Commissioner W. A. "Andy" Meyers  
Fort Bend County Precinct 3  
1809 Eldridge Road  
Sugar Land, Texas 77478

**RE: Mission Sierra, Section 2 -Traffic Control Plan  
Mission Sierra, Section 3**

Dear Commissioner:

Fort Bend County Engineering has completed and recommends approval of the traffic control plans for the above referenced subdivision. The public hearing date for acceptance of the plans is being scheduled.

A copy of the traffic control plan is attached for your review. If you should have any questions, please give me a call.

Sincerely,

Steven L. Evans  
Assistant to County Engineer

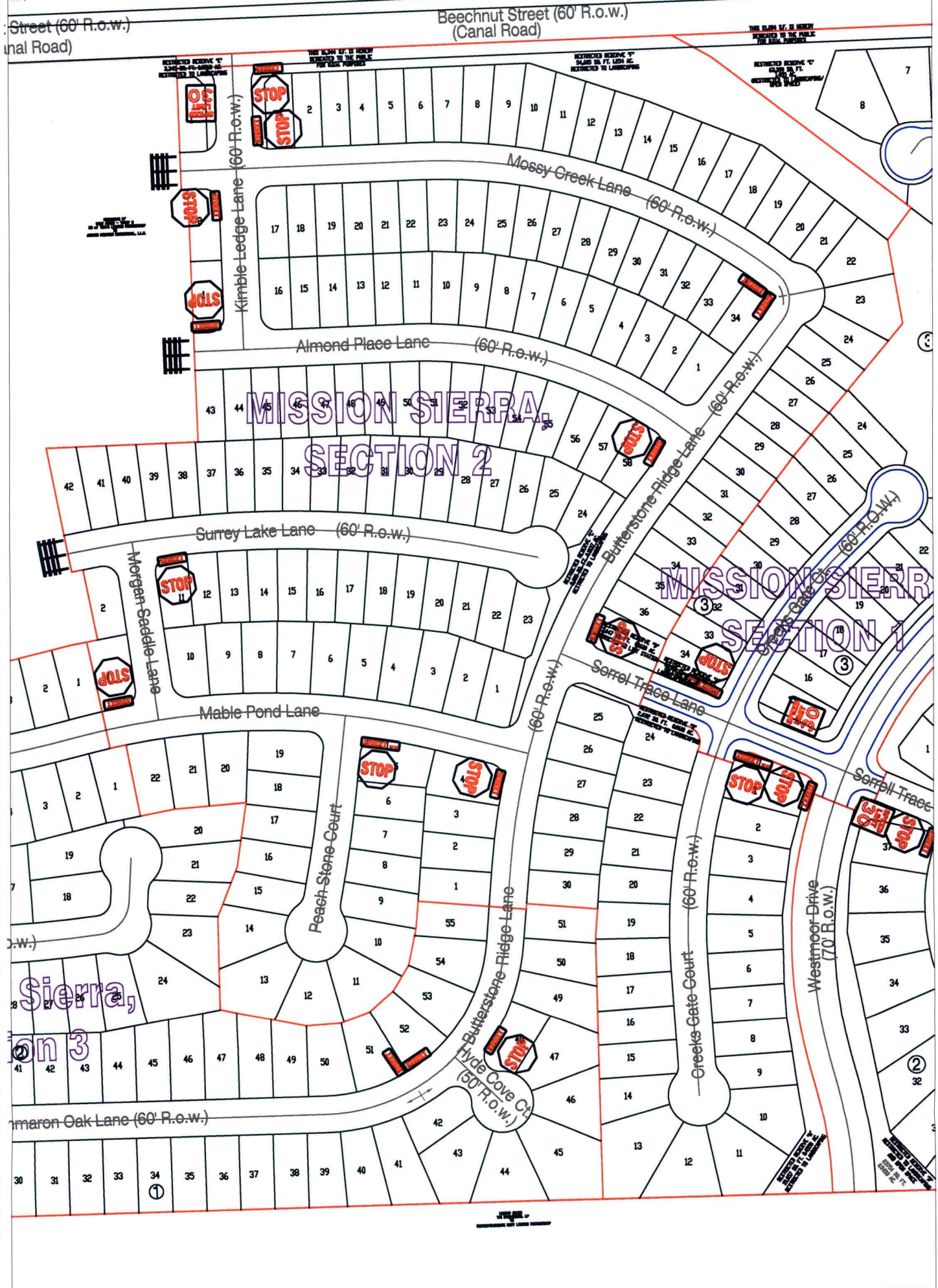
SLE/mjs

cc: Judge Robert E. Hebert, County Judge  
Marc Grant - FBC Road & Bridge  
Marc Grant - Signage Department  
File



LANDMARK 150 LIMITED, et al  
TO  
TEXAS INDUSTRIES, INC.  
100.00 ACRES

LANDMARK 150 LIMITED, et al  
TO  
TEXAS INDUSTRIES, INC.  
100.00 ACRES



**Note:**

The purpose of this traffic control plan is to establish traffic control for Missions Sierra, Section 2.

Drawn By: L. Brdecka

Date: 12-14-09

Approved By: Steven L. Evans

Date: 12-14-09

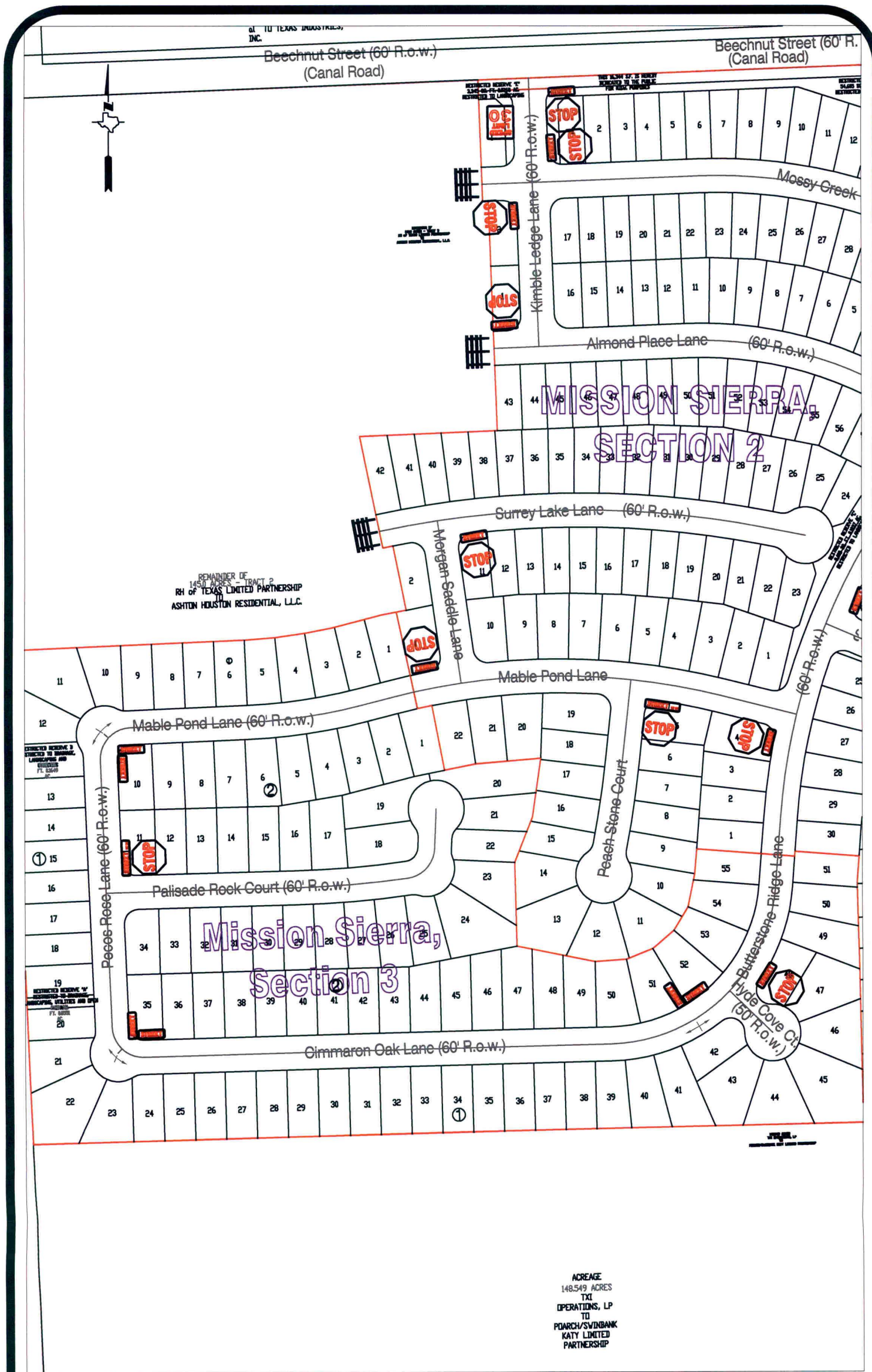
Scale

1" = 200'-0"

**Mission Sierra, Section 2  
Control Map and  
Traffic Sign Layout**

Fort Bend County Engineering Dept.  
1124 Blume Road  
Rosenberg, Texas 77471





**Note:**

The purpose of this traffic control plan is to establish traffic control for Missions Sierra, Section 3.

Drawn By: L. Brdecka  
Date: 12-14-09  
Approved By: Steven L. Evans  
Date: 12-14-09  
Scale  
1" = 200'-0"

**Mission Sierra, Section 3  
Control Map and  
Traffic Sign Layout**

Fort Bend County Engineering Dept.  
1124 Blume Road  
Rosenberg, Texas 77471