

FORT BEND COUNTY ENGINEERING

Fort Bend County, Texas

D. Jesse Hegemier
County Engineer

January 14, 2010

Commissioner W. A. "Andy" Meyers
Fort Bend County Precinct 3
1809 Eldridge Road
Sugar Land, Texas 77478

RE: Fry Road Street Dedication No. 3 -Traffic Control Plan

Dear Commissioner:

Fort Bend County Engineering has completed and recommends approval of the traffic control plan for the above referenced subdivision. The public hearing date for acceptance of the plan is being scheduled.

A copy of the traffic control plan is attached for your review. If you should have any questions, please give me a call.

Sincerely,

Nathan D. Hatcher
Assistant to County Engineer

NDH/mjs

cc: Judge Robert E. Hebert, County Judge
Marc Grant - FBC Road & Bridge
Marc Grant - Signage Department
File

TERABROOK CINCO RANCH
SOUTHWEST, L.P.

GINGO TERRACE DRIVE

HAND FIONA SKY LANE

EXTENSION AND RESERVE

TERABROOK CINCO RANCH SOUTHWEST, L.P.
RESIDUE OF
CALLED 8474831 ADDRESS

RESTRICTED RESERVE "4"
RESTRICTED TO COMMERCIAL USE
(D.M.V.)
2133 ACRES
92,930 SQ.FT.

KIDS "R" KIDS
TEXAS NO. 10
RESTRICTED RESERVE "1"
RESTRICTED TO COMMERCIAL USE
(D.M.V.)
2133 ACRES
92,930 SQ.FT.

FRY ROAD STREET DEDICATION NO. 3

GINGO RANCH SOUTHWEST, SECTION 17

728.38
FBC-255

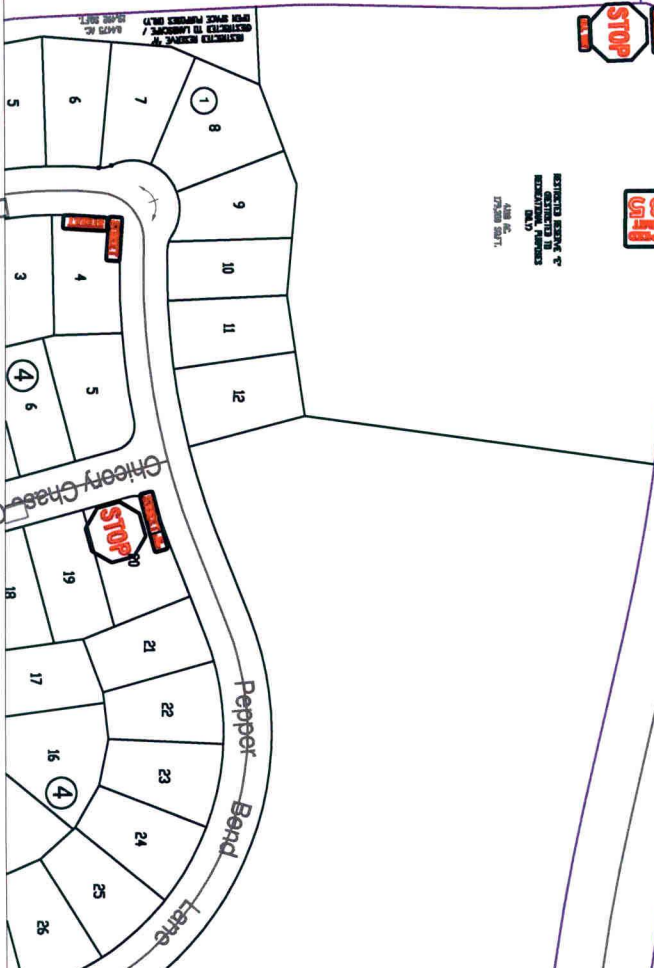
RESTRICTED RESERVE "4"
RESTRICTED TO COMMERCIAL USE
(D.M.V.)
2133 ACRES
92,930 SQ.FT.

RESTRICTED RESERVE "4"
RESTRICTED TO COMMERCIAL USE
(D.M.V.)
2133 ACRES
92,930 SQ.FT.

RESTRICTED RESERVE "4"
RESTRICTED TO COMMERCIAL USE
(D.M.V.)
2133 ACRES
92,930 SQ.FT.

RESTRICTED RESERVE "7"
RESTRICTED TO AGRICULTURE /
DRAINAGE PURPOSES ONLY
759,535 SQ.FT.
17,744 AC.

RESTRICTED RESERVE "7"
RESTRICTED TO AGRICULTURE /
DRAINAGE PURPOSES ONLY
759,535 SQ.FT.
17,744 AC.



Note:
The purpose of this traffic control plan is to establish traffic control for Fry Road Street Dedication No. 3.

Drawn By: L. Brdecka
Date: 1-14-10
Approved By: Nathan Hatcher
Date: 1-14-10
Scale
1" = 200'-0"

**Fry Road Street Dedication No. 3
Control Map and
Traffic Sign Layout**
Fort Bend County Engineering Dept.
1124 Blume Road
Rosenberg, Texas 77471