

FORT BEND COUNTY ENGINEERING

Fort Bend County, Texas

D. Jesse Hegemier
County Engineer

December 11, 2009

Commissioner W. A. "Andy" Meyers
Fort Bend County Precinct 3
1809 Eldridge Road
Sugar Land, Texas 77478

**RE: Mission Oaks, Section 1 -Traffic Control Plan
Mission Oaks, Section 2**

Dear Commissioner:

Fort Bend County Engineering has completed and recommends approval of the traffic control plan for the above referenced subdivision. The public hearing date for acceptance of the plan is being scheduled.

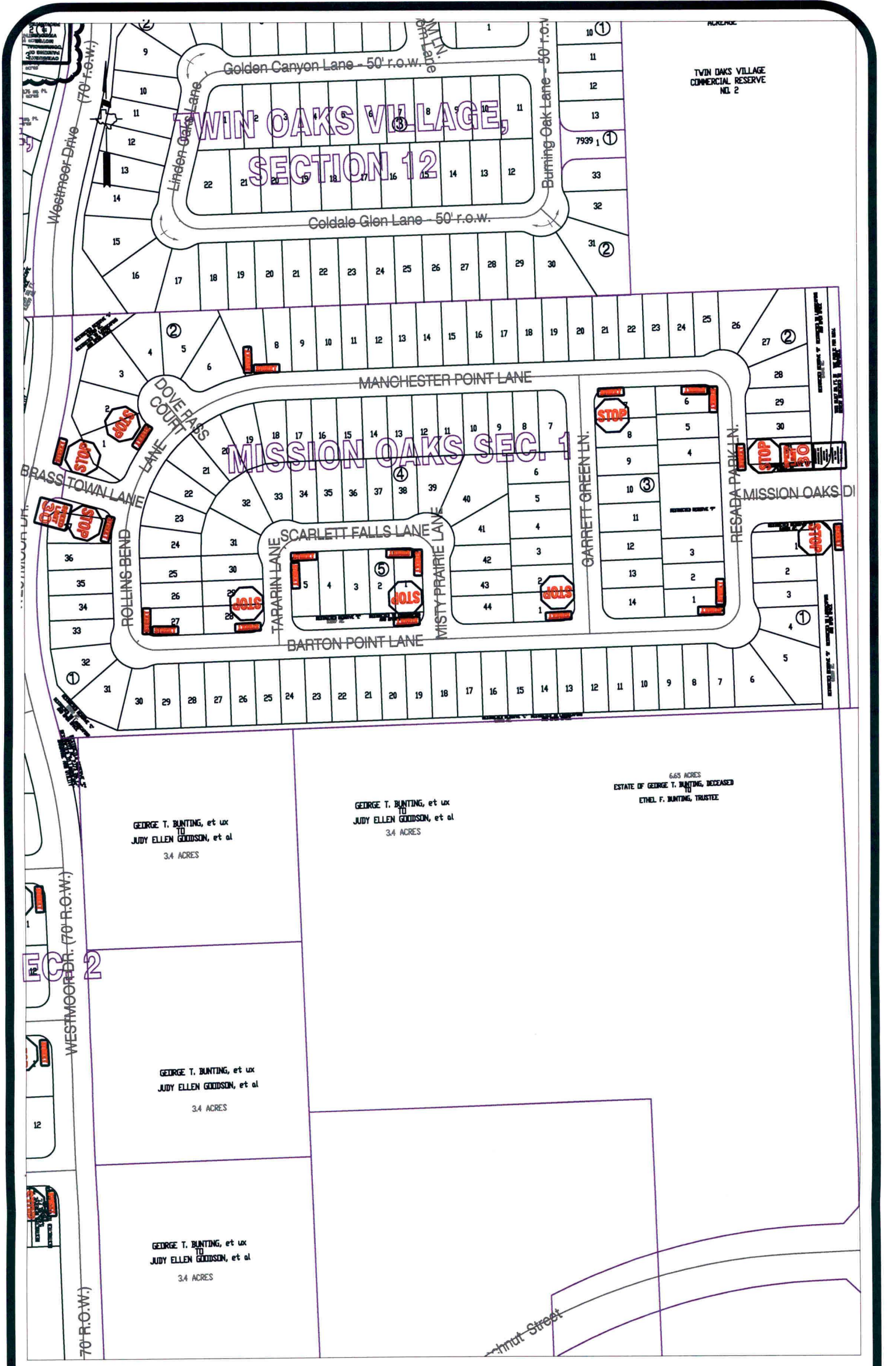
A copy of the traffic control plan is attached for your review. If you should have any questions, please give me a call.

Sincerely,

Steven L. Evans
Assistant to County Engineer

SLE/mjs

cc: Judge Robert E. Hebert, County Judge
Marc Grant - FBC Road & Bridge
Marc Grant - Signage Department
File



TWIN OAKS VILLAGE
COMMERCIAL RESERVE
NO. 2

**TWIN OAKS VILLAGE,
SECTION 12**

MISSION OAKS SEC. 1

SECTION 2

GEORGE T. BUNTING, et ux
JUDY ELLEN GOODSON, et al
3.4 ACRES

GEORGE T. BUNTING, et ux
JUDY ELLEN GOODSON, et al
3.4 ACRES

6.65 ACRES
ESTATE OF GEORGE T. BUNTING, DECEASED
ETHEL F. BUNTING, TRUSTEE

GEORGE T. BUNTING, et ux
JUDY ELLEN GOODSON, et al
3.4 ACRES

GEORGE T. BUNTING, et ux
JUDY ELLEN GOODSON, et al
3.4 ACRES

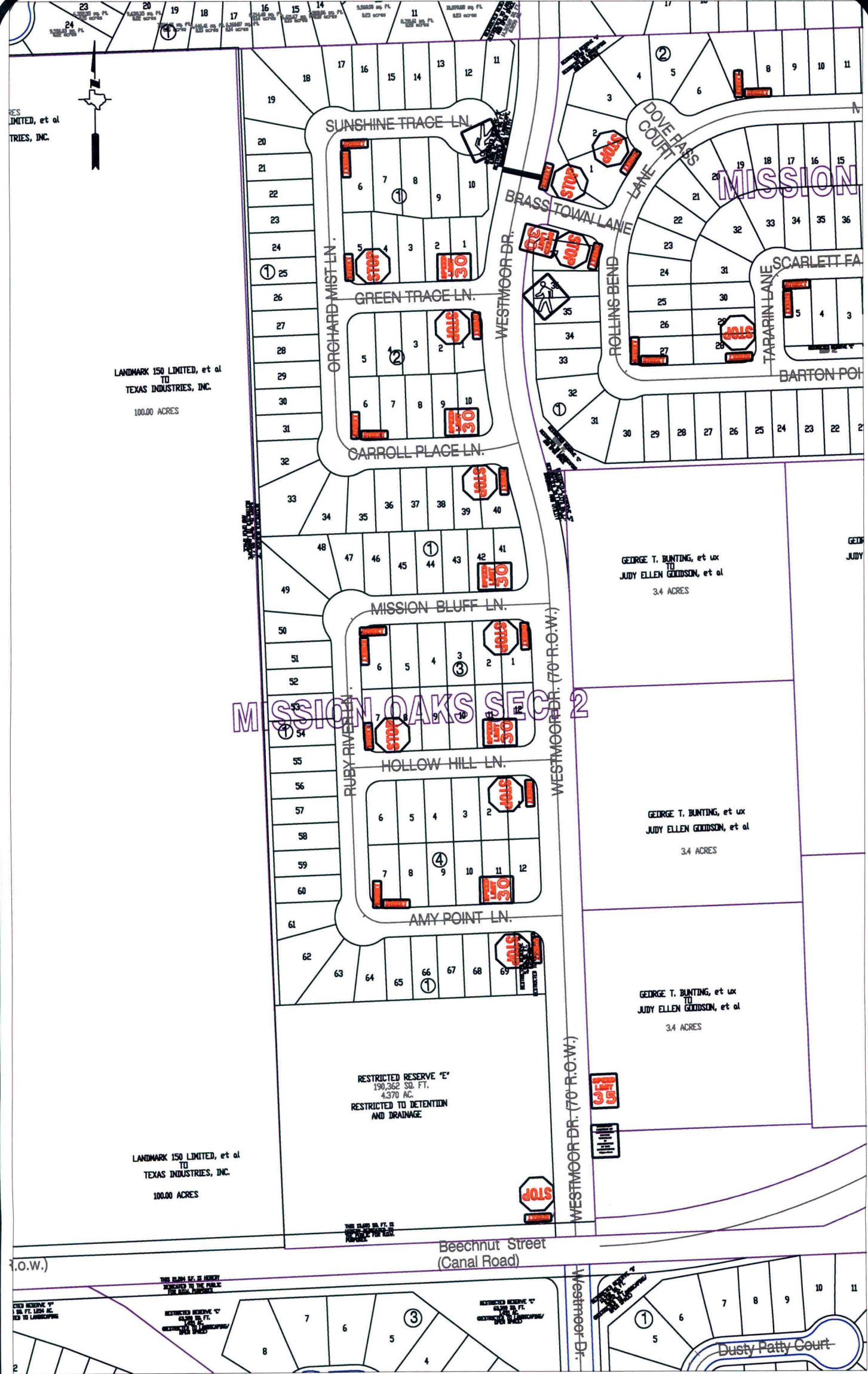
Note:

The purpose of this traffic control plan is to establish traffic control for Missions Oaks, Section 1.

Drawn By: L. Brdecka
Date: 12-9-09
Approved By: Steven L. Evans
Date: 12-9-09
Scale
1" = 200'-0"

**Mission Oaks, Section 1
Control Map and
Traffic Sign Layout**

Fort Bend County Engineering Dept.
1124 Blume Road
Rosenberg, Texas 77471



RES LIMITED, et al
RIES, INC.

LANDMARK 150 LIMITED, et al
TO
TEXAS INDUSTRIES, INC.
100.00 ACRES

GEORGE T. BUNTING, et ux
TO
JUDY ELLEN GOODSON, et al
3.4 ACRES

GEORGE T. BUNTING, et ux
JUDY ELLEN GOODSON, et al
3.4 ACRES

GEORGE T. BUNTING, et ux
TO
JUDY ELLEN GOODSON, et al
3.4 ACRES

RESTRICTED RESERVE "E"
190,362 SQ. FT.
4,370 AC.
RESTRICTED TO DETENTION
AND DRAINAGE.

LANDMARK 150 LIMITED, et al
TO
TEXAS INDUSTRIES, INC.
100.00 ACRES

Note:

The purpose of this traffic control plan is to establish traffic control for Missions Oaks, Section 2.

Drawn By: L. Brdecka
Date: 12-9-09
Approved By: Steven L. Evans
Date: 12-9-09
Scale
1" = 200'-0"

**Mission Oaks, Section 2
Control Map and
Traffic Sign Layout**

Fort Bend County Engineering Dept.
1124 Blume Road
Rosenberg, Texas 77471