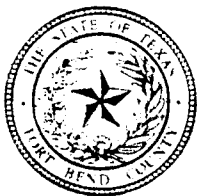


50



FORT BEND COUNTY ENGINEERING

Fort Bend County, Texas

D. Jesse Hegemier
County Engineer

November 16, 2009

Commissioner W. A. "Andy" Meyers
Fort Bend County Precinct 3
1809 Eldridge Road
Sugar Land, Texas 77478

**RE: Grand Mission, Section 12 -Traffic Control Plan
Grand Mission, Section 14
Grand Mission, Section 15
Grand Mission Estates, Section 2**

Dear Commissioner:

Fort Bend County Engineering has completed and recommends approval of the traffic control plans for the above referenced subdivision. The public hearing date for acceptance of the plans is scheduled for 11/17/2009.

A copy of the traffic control plan is attached for your review. If you should have any questions, please give me a call.

Sincerely,

A handwritten signature in cursive script that reads "Steven L. Evans".

Steven L. Evans
Assistant to County Engineer

SLE/mjs

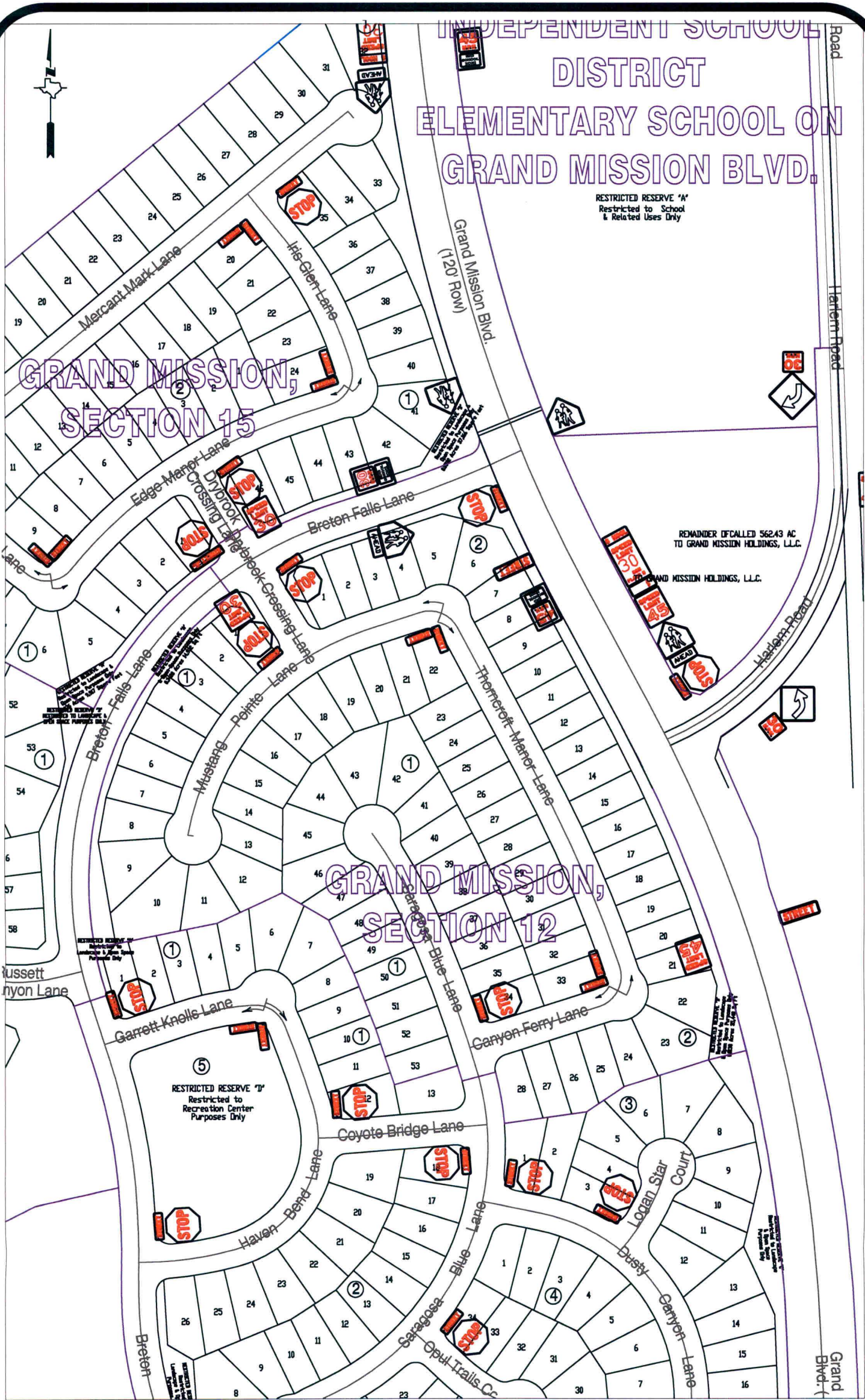
cc: Judge Robert E. Hebert, County Judge
Marc Grant - FBC Road & Bridge
Marc Grant - Signage Department
File

INDEPENDENT SCHOOL DISTRICT
 ELEMENTARY SCHOOL ON
 GRAND MISSION BLVD.

RESTRICTED RESERVE 'A'
 Restricted to School
 & Related Uses Only

GRAND MISSION,
 SECTION 15

GRAND MISSION,
 SECTION 12



Note:

The purpose of this traffic control plan is to establish traffic control for Grand Mission, Section 12.

Drawn By: L. Brdecka

Date: 11-9-09

Approved By: Steven L. Evans

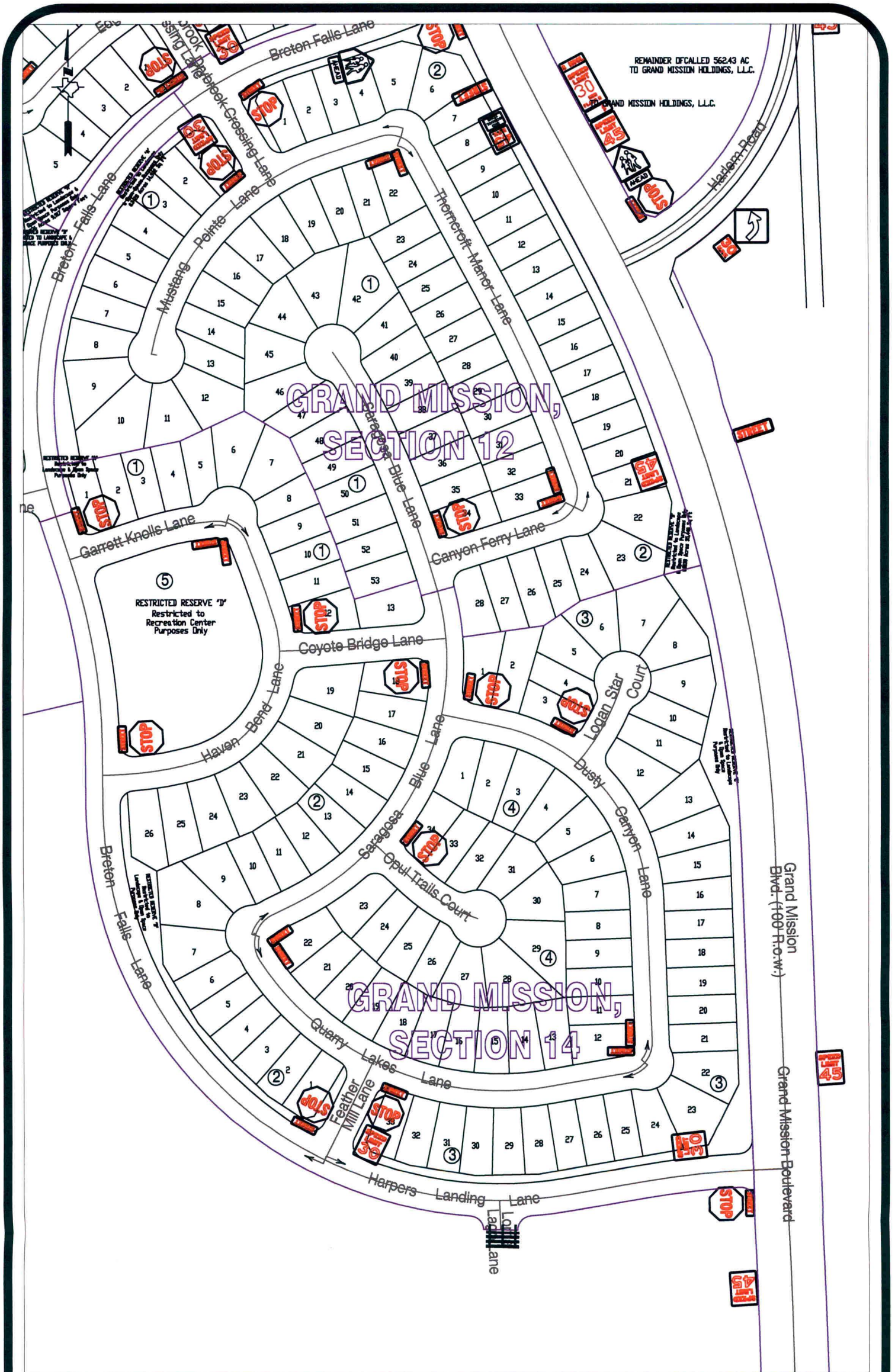
Date: 11-9-09

Scale

1" = 200'-0"

Grand Mission, Section 12
 Control Map and Traffic Sign Layout

Fort Bend County Engineering Dept.
 1124 Blume Road
 Rosenberg, Texas 77471



Note:

The purpose of this traffic control plan is to establish traffic control for Grand Mission, Section 14.

Drawn By: L. Brdecka

Date: 11-9-09

Approved By: Steven L. Evans

Date: 11-9-09

Scale

1" = 200'-0"

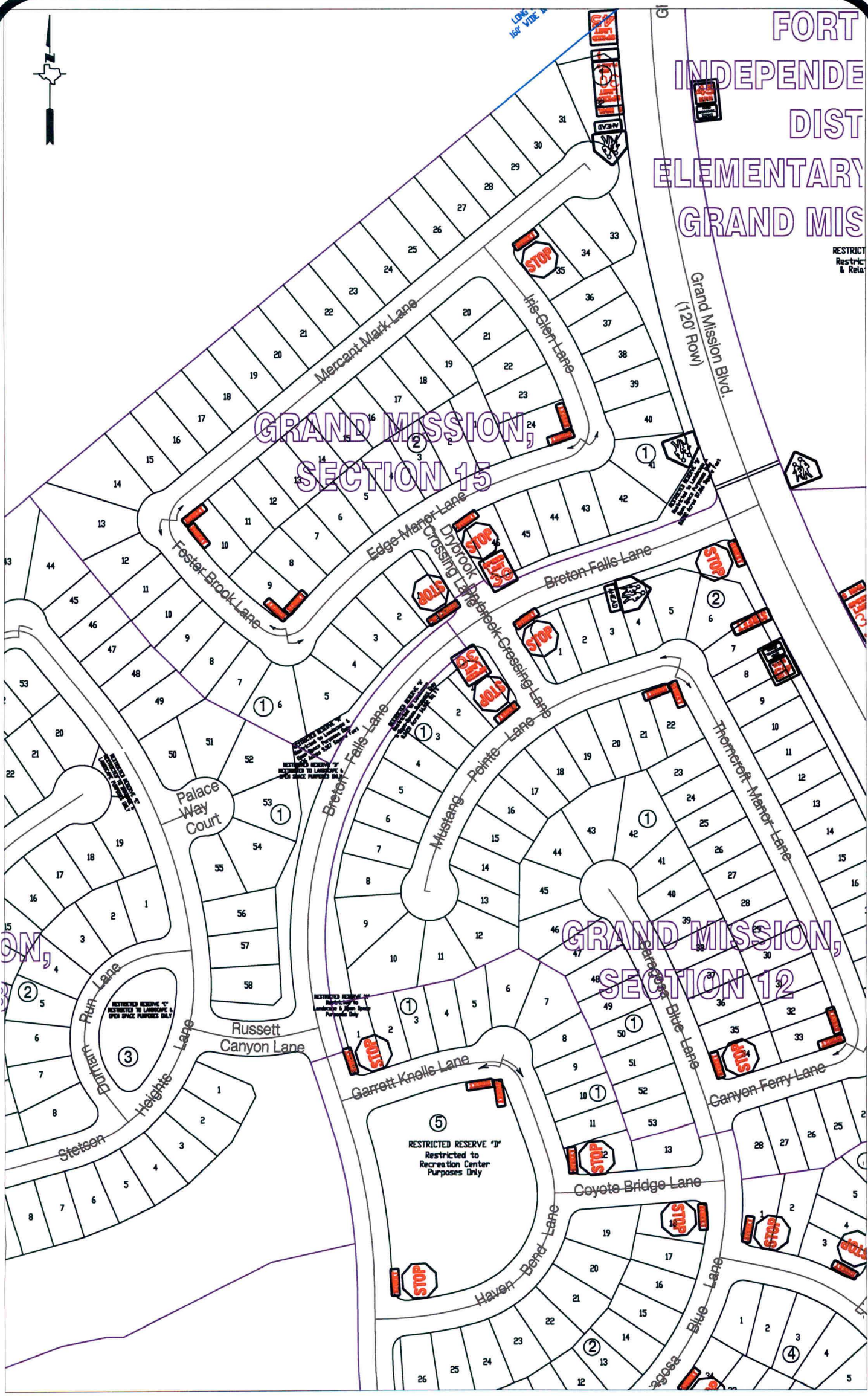
**Grand Mission, Section 14
Control Map and Traffic Sign Layout**

Fort Bend County Engineering Dept.
1124 Blume Road
Rosenberg, Texas 77471



FORT INDEPENDENCE DISTRICT ELEMENTARY GRAND MISSION

RESTRICTED RESERVE
Restrict
& Relat



GRAND MISSION, SECTION 15

GRAND MISSION, SECTION 12

Note:

The purpose of this traffic control plan is to establish traffic control for Grand Mission, Section 15.

Drawn By: L. Brdecka

Date: 11-9-09

Approved By: Steven L. Evans

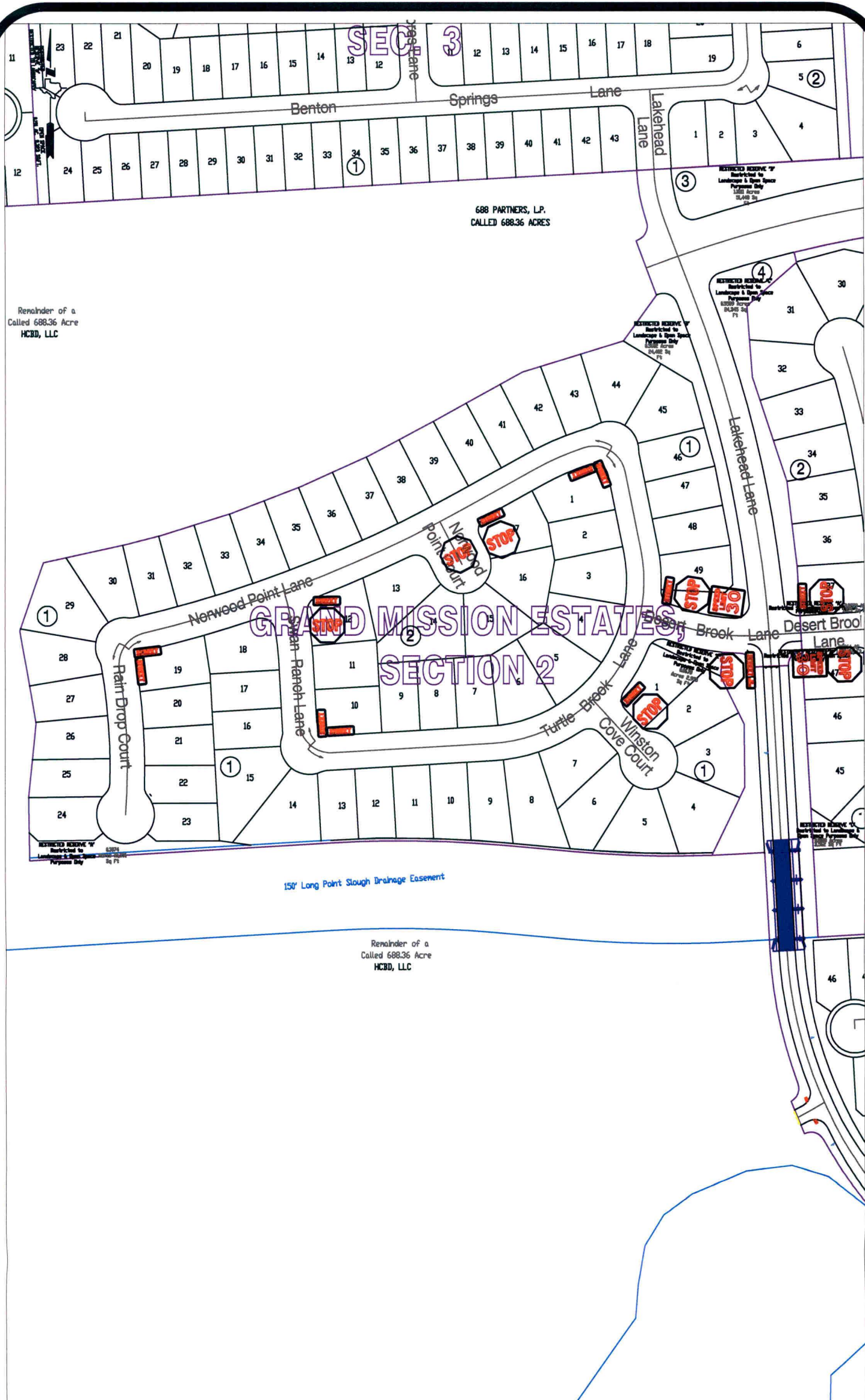
Date: 11-9-09

Scale

1" = 200'-0"

Grand Mission, Section 15 Control Map and Traffic Sign Layout

Fort Bend County Engineering Dept.
1124 Blume Road
Rosenberg, Texas 77471



Note:

The purpose of this traffic control plan is to establish traffic control for Grand Mission Estates, Section 2.

Drawn By: L. Brdecka

Date: 11-9-09

Approved By: Steven L. Evans

Date: 11-9-09

Scale

1" = 200'-0"

**Grand Mission Estates, Section 2
Control Map and Traffic Sign Layout**

Fort Bend County Engineering Dept.
1124 Blume Road
Rosenberg, Texas 77471