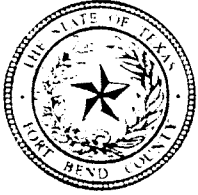


5A



FORT BEND COUNTY ENGINEERING

Fort Bend County, Texas

D. Jesse Hegemier
County Engineer

December 16, 2009

Commissioner W. A. "Andy" Meyers
Fort Bend County Precinct 3
1809 Eldridge Road
Sugar Land, Texas 77478

RE: Grand Corner Drive -Traffic Control Plan

Dear Commissioner:

Fort Bend County Engineering has completed and recommends approval of the traffic control plan for the above referenced subdivision. The public hearing date for acceptance of the plan is being scheduled.

A copy of the traffic control plan is attached for your review. If you should have any questions, please give me a call.

Sincerely,

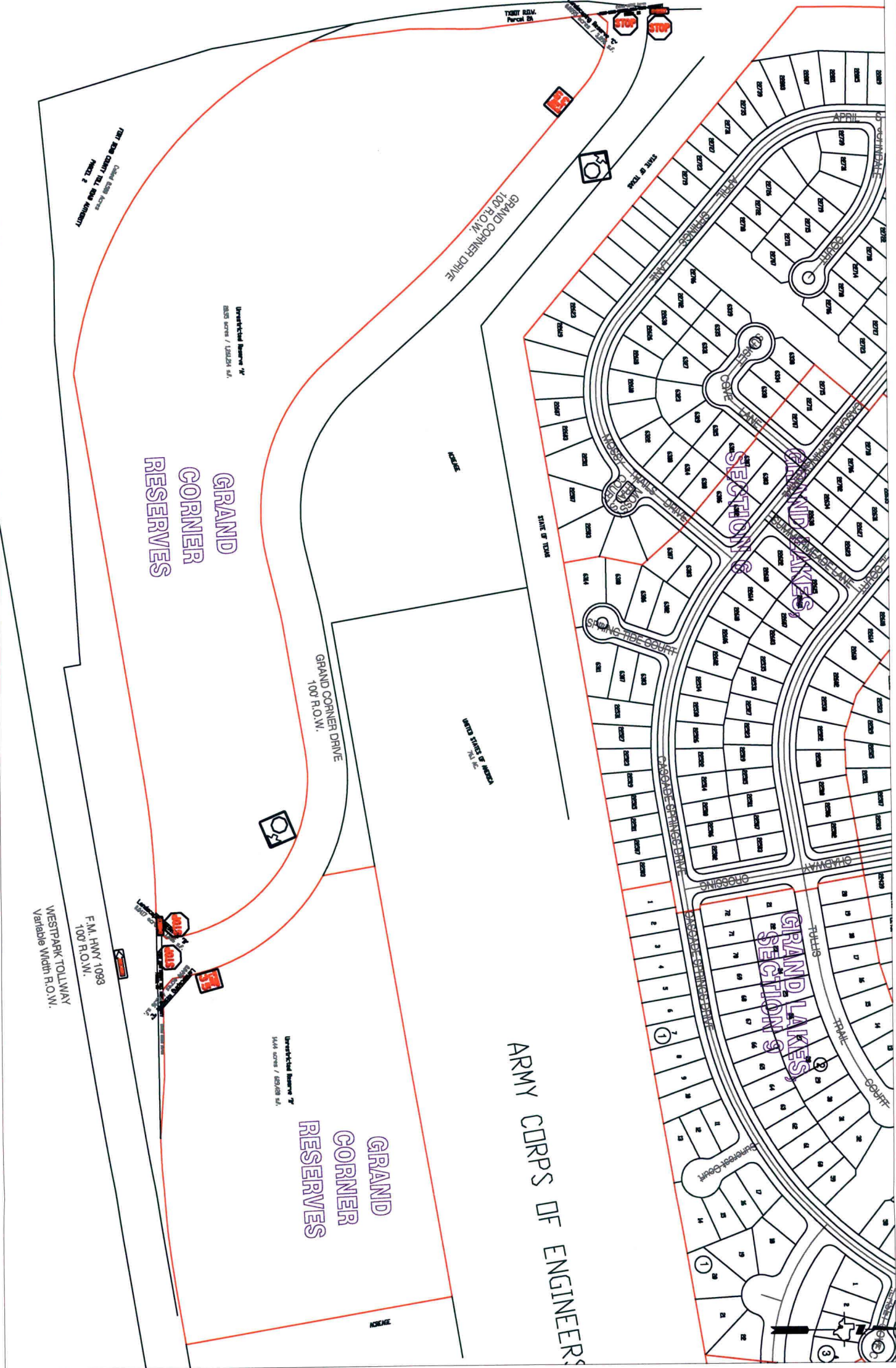
A handwritten signature in black ink, appearing to read "Nathan D. Hatcher".

Nathan D. Hatcher
Assistant to County Engineer

NDH/mjs

cc: Judge Robert E. Hebert, County Judge
Marc Grant - FBC Road & Bridge
Marc Grant - Signage Department
File

GRAND PARKWAY
(VARIABLE R.O.W.)



GRAND
CORNER
RESERVES

GRAND
CORNER
RESERVES

ARMY CORPS OF ENGINEERS

SECTION 8
GRAND LAKES

SECTION 9
GRAND LAKES

100' R.O.W.
GRAND CORNER DRIVE

100' R.O.W.
GRAND CORNER DRIVE

F.M. HWY 1093
100' R.O.W.

WESTPARK TOLLWAY
Variable Width R.O.W.

Unrecorded Reserve #1
1545 ACRES / 1/82/028 IN.

Unrecorded Reserve #2
1545 ACRES / 1/82/028 IN.

Note:

The purpose of this traffic control plan is to establish traffic control for Grand Corner Drive.

Drawn By: L. Brdecka
Date: 12-16-08
Approved By: Steven L. Evans
Date: 12-16-08
Scale
1" = 200'-0"

**Grand Corner Drive
Control Map and
Traffic Sign Layout**

Fort Bend County Engineering Dept.
1124 Blume Road
Rosenberg, Texas 77471