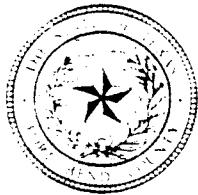


5B



FORT BEND COUNTY ENGINEERING

Fort Bend County, Texas

D. Jesse Hegemier
County Engineer

October 1, 2009

Commissioner Richard Morrison
Fort Bend County Precinct 1
1517 Eugene Heimann Circle, Suite 300
Richmond, Texas 77469

RE: Traffic Study - Riverpark Subdivision - "No Parking Anytime" signs for a portion of East Riverpark Drive and Summit Creek

Dear Commissioner:

The Fort Bend County Engineering Department has completed a traffic study for the referenced subdivision. The request was for "No Parking Anytime" signs adjacent to the commercial developments along East Riverpark Drive and for the recreation facility along Summit Creek. The County has observed these locations and have determined based on safety and mobility that these areas would be serviced with "No Parking Anytime" signs.

The Engineering Department recommends acceptance of the traffic control plan as submitted. The public hearing date for acceptance of the plan is being scheduled. If you have any questions please do not hesitate to call.

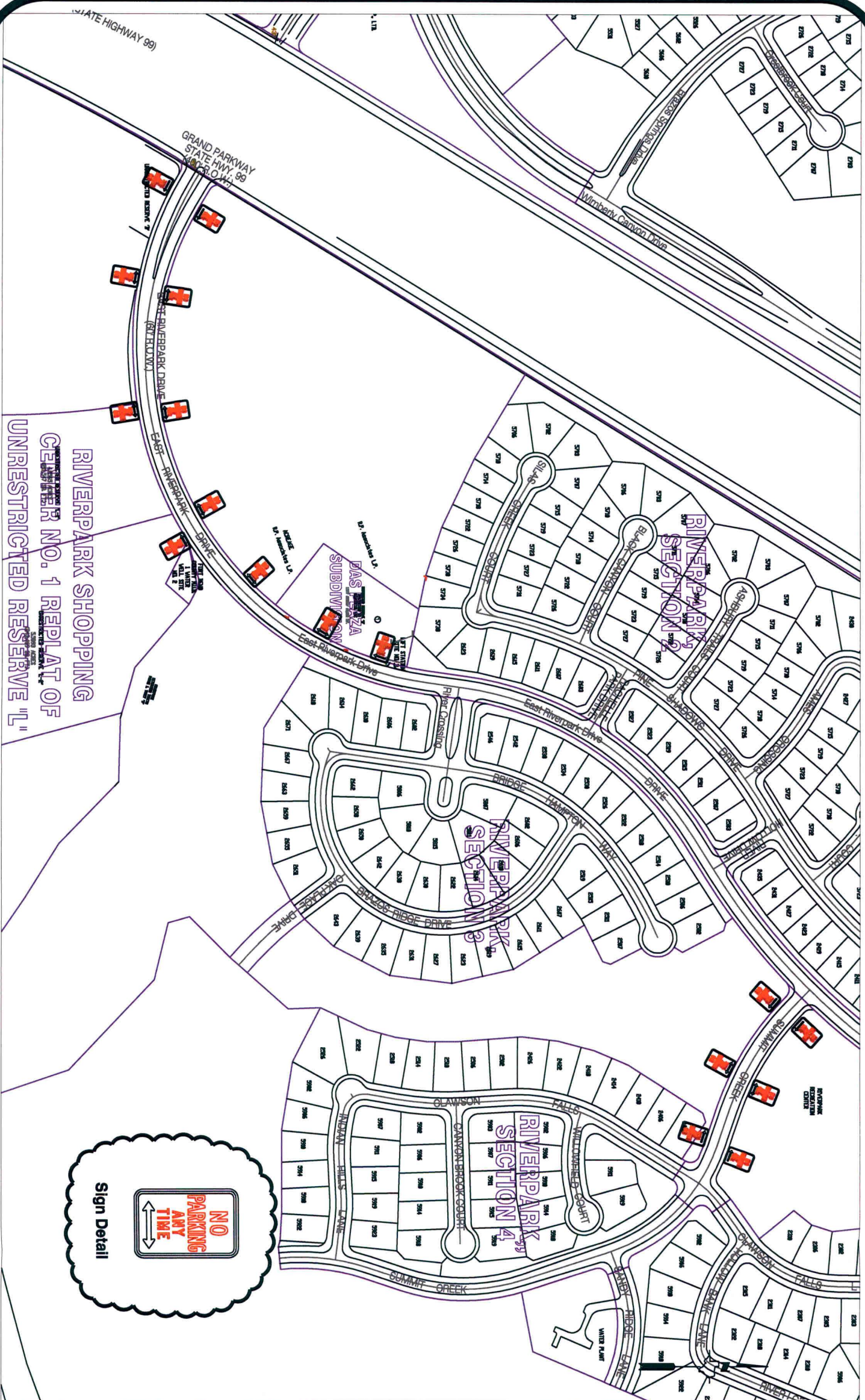
Sincerely,

A handwritten signature in black ink, appearing to read "Nathan D. Hatcher".

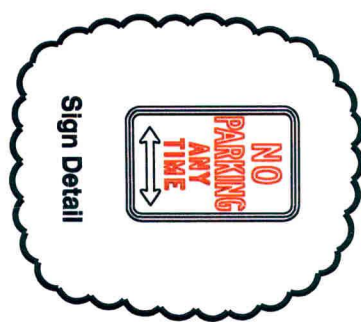
Nathan D. Hatcher
Assistant to County Engineer

NDH/mjs

cc: Mr. Alia Vinson, Allen, Boon, Humphries, Robinson, LLP
Judge Robert E. Hebert, County Judge
Marc Grant - FBC Road & Bridge
Marc Grant - Signage Department
File



RIVERPARK SHOPPING
CENTER NO. 1 REPLAT OF
UNRESTRICTED RESERVE "L"



Note:

The purpose of this traffic control plan is to revise traffic control for a portion of Riverpark Subdivision with the addition of "No Parking" signs as indicated on the map.

Drawn By: L. Brdecka
Date: 10-2-09
Approved By: Nathan Hatcher
Date: 10-2-09
Scale
1" = 200'-0"

**Riverpark Subdivision
Control Map and
Traffic Sign Layout**

Fort Bend County Engineering Dept.
1124 Blume Road
Rosenberg, Texas 77471