

**FORT BEND COUNTY ENGINEERING**

Fort Bend County, Texas

D. Jesse Hegemier
County Engineer

September 21, 2009

Commissioner Richard Morrison
Fort Bend County Precinct 1
1517 Eugene Heimann Circle, Suite 300
Richmond, Texas 77469

**RE: Sienna Village of Waters Lake, Section 12B -Traffic Control Plan
Sienna Village of Waters Lake, Section 13A
Sienna Village of Waters Lake, Section 13B
Sienna Village of Waters Lake, Section 16
Sienna Village of Waters Lake, Section 19
Sienna Village of Waters Lake, Section 27
Sienna Steep Bank Village, Section 16
Sienna Portion of Scanlan Trace and Sequoia Pass Street Dedication**

Dear Commissioner:

Fort Bend County Engineering has completed and recommends approval of the traffic control plan for the above referenced subdivision. The public hearing date for acceptance of the plans is being scheduled.

A copy of the traffic control plan is attached for your review. If you should have any questions, please give me a call.

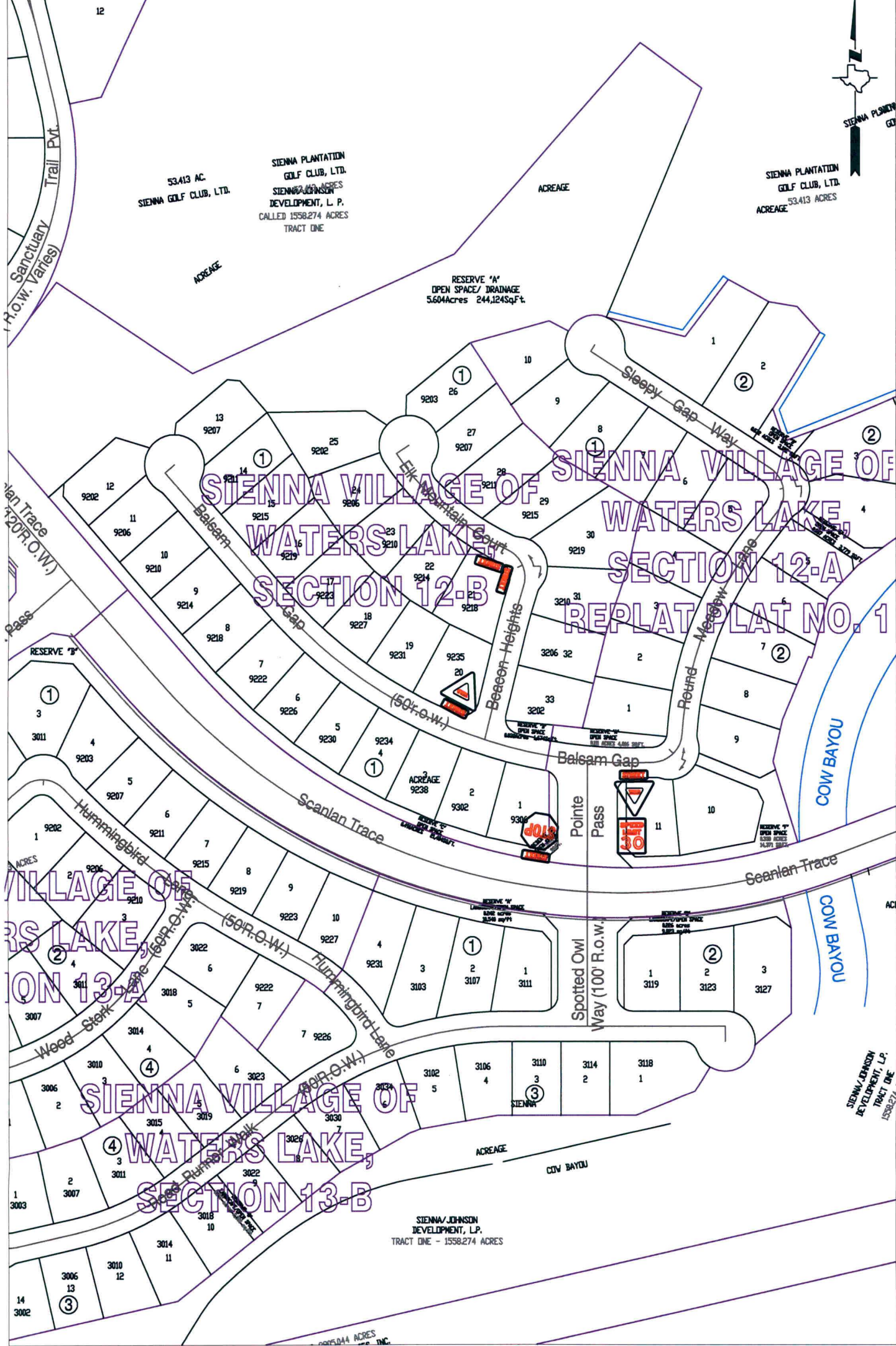
Sincerely,

Nathan D. Hatcher
Assistant to County Engineer

NDH/mjs

cc: Judge Robert E. Hebert, County Judge
Marc Grant - FBC Road & Bridge
Marc Grant - Signage Department
File

WATERS LAKE,
SECTION 11

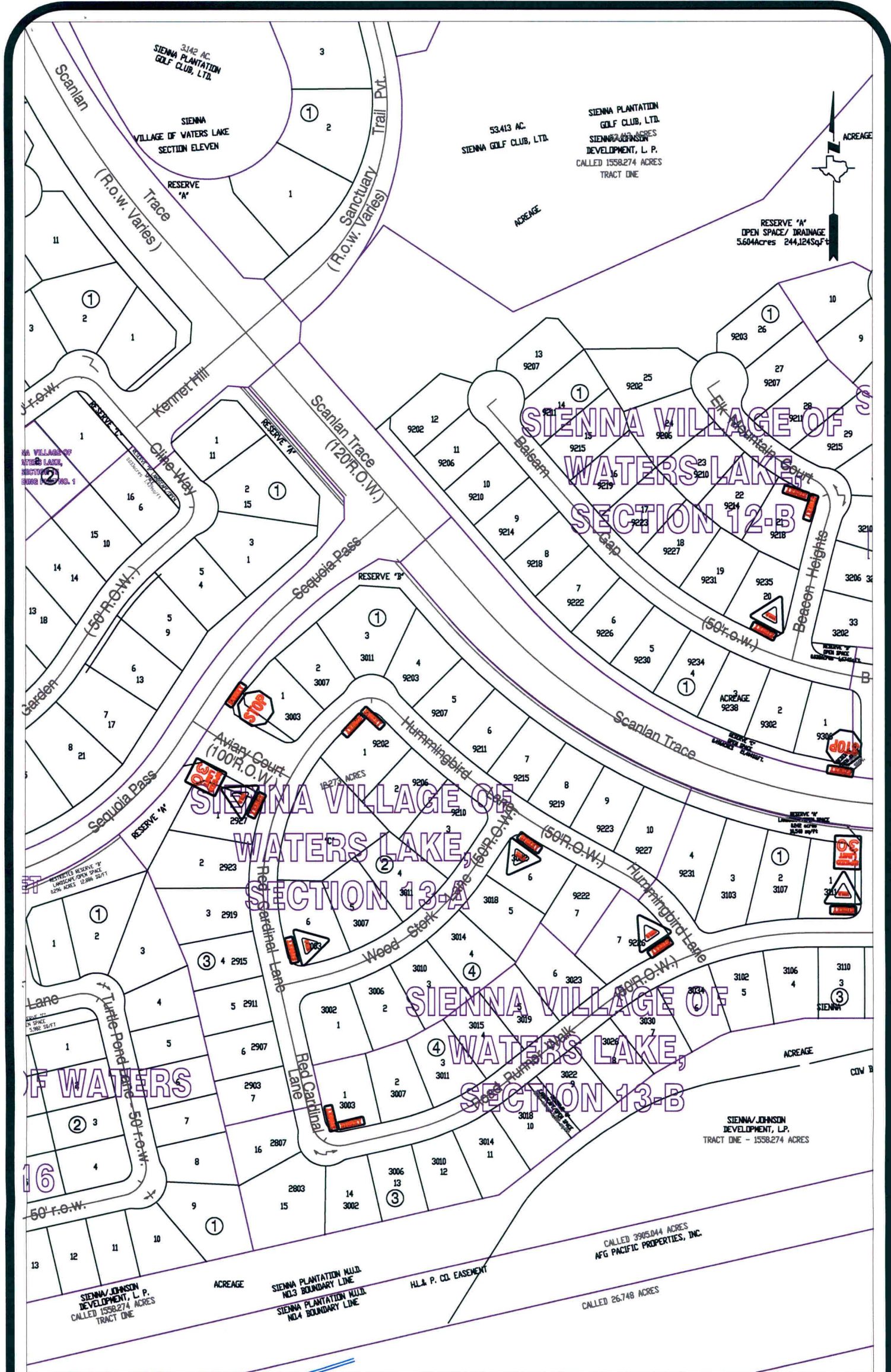


Note:

The purpose of this traffic control plan is to establish traffic control for Sienna Village of Water's Lake, Section 12-B.

Drawn By: L. Brdecka
Date: 9-16-09
Approved By: Nathan Hatcher
Date: 9-16-09
Scale
1" = 200'-0"

Sienna Village of Water's Lake,
Section 12-B
Control Map and
Traffic Sign Layout
Fort Bend County Engineering Dept.
1124 Blume Road
Rosenberg, Texas 77471



Note:

The purpose of this traffic control plan is to establish traffic control for Sienna Village of Water's Lake, Section 13-A.

Drawn By: L. Brdecka

Date: 9-17-09

Approved By: Nathan Hatcher

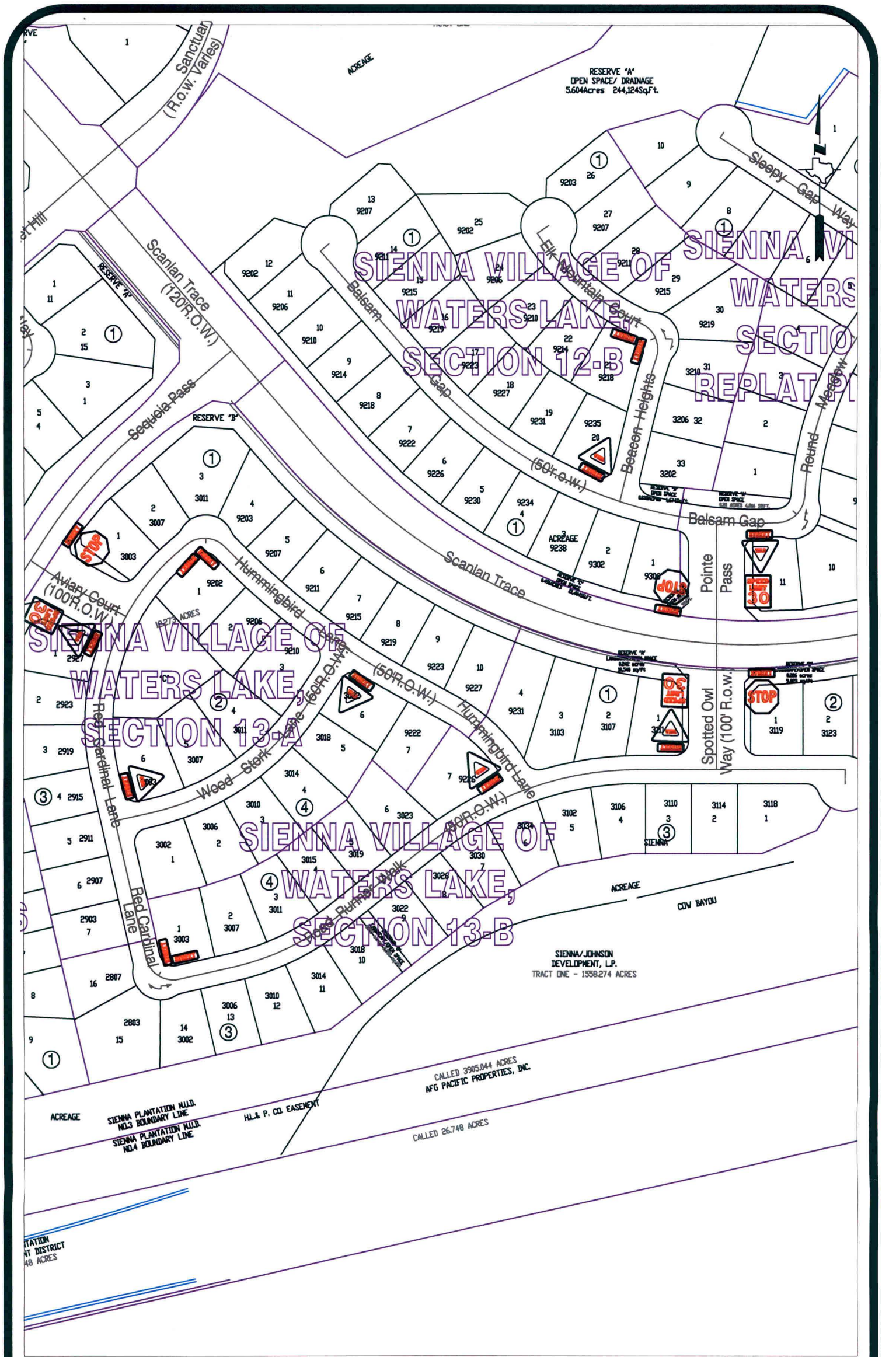
Date: 9-17-09

Scale

1" = 200'-0"

**Sienna Village of Water's Lake,
Section 13-A
Control Map and
Traffic Sign Layout**

Fort Bend County Engineering Dept.
1124 Blume Road
Rosenberg, Texas 77471



Note:

The purpose of this traffic control plan is to establish traffic control for Sienna Village of Water's Lake, Section 13-B.

Drawn By: L. Brdecka

Date: 9-17-09

Approved By: Nathan Hatcher

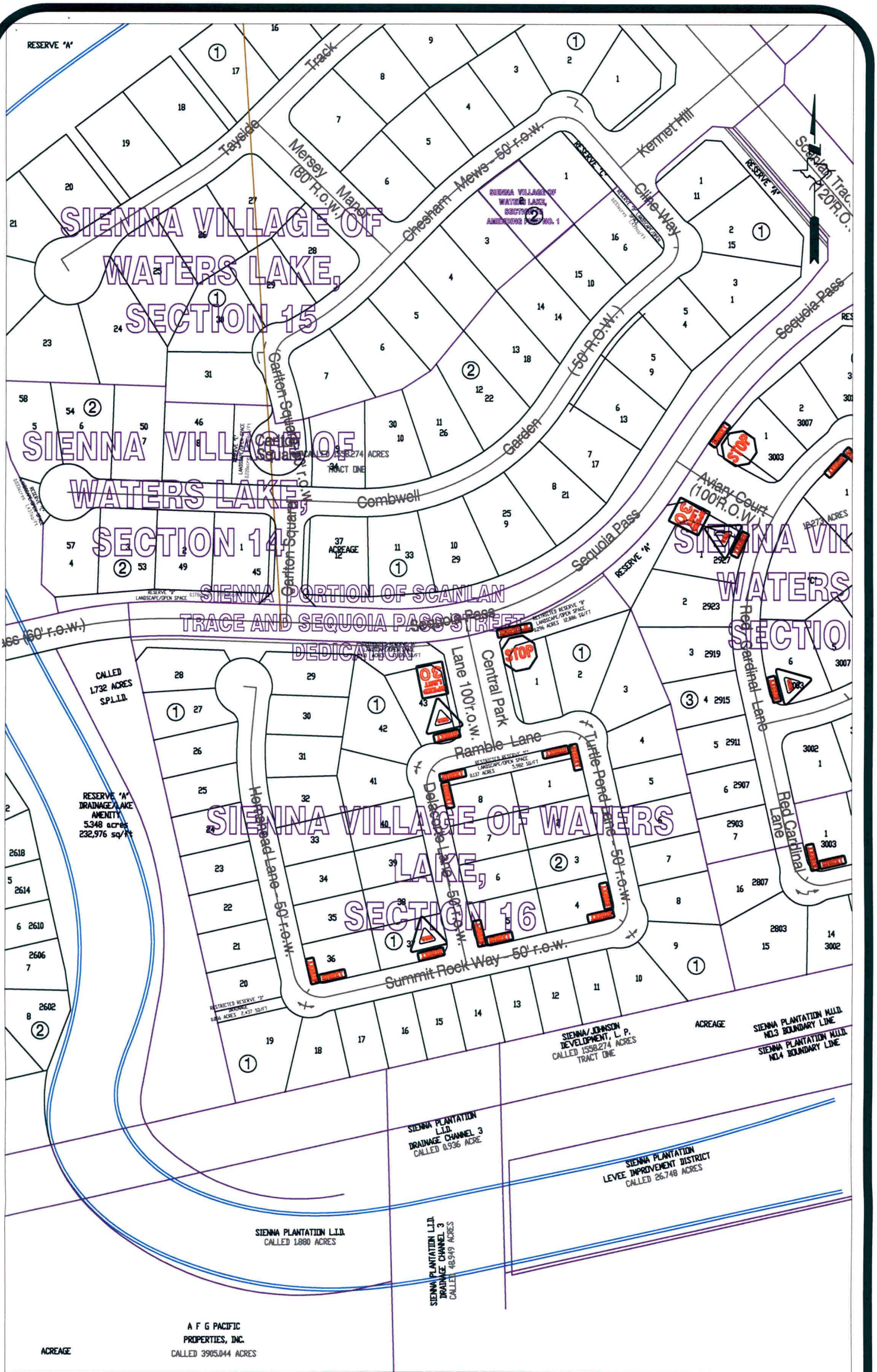
Date: 9-17-09

Scale

1" = 200'-0"

**Sienna Village of Water's Lake,
Section 13-B
Control Map and
Traffic Sign Layout**

Fort Bend County Engineering Dept.
1124 Blume Road
Rosenberg, Texas 77471



Note:

The purpose of this traffic control plan is to establish traffic control for Sienna Village of Water's Lake, Section 16.

Drawn By: L. Brdecka

Date: 9-17-09

Approved By: Nathan Hatcher

Date: 9-17-09

Scale

1" = 200'-0"

Sienna Village of Water's Lake,
Section 16
Control Map and
Traffic Sign Layout

Fort Bend County Engineering Dept.
1124 Blume Road
Rosenberg, Texas 77471



Note:

The purpose of this traffic control plan is to establish traffic control for Sienna Village of Water's Lake, Section 19.

Drawn By: L. Brdecka

Date: 9-17-09

Approved By: Nathan Hatcher

Date: 9-17-09

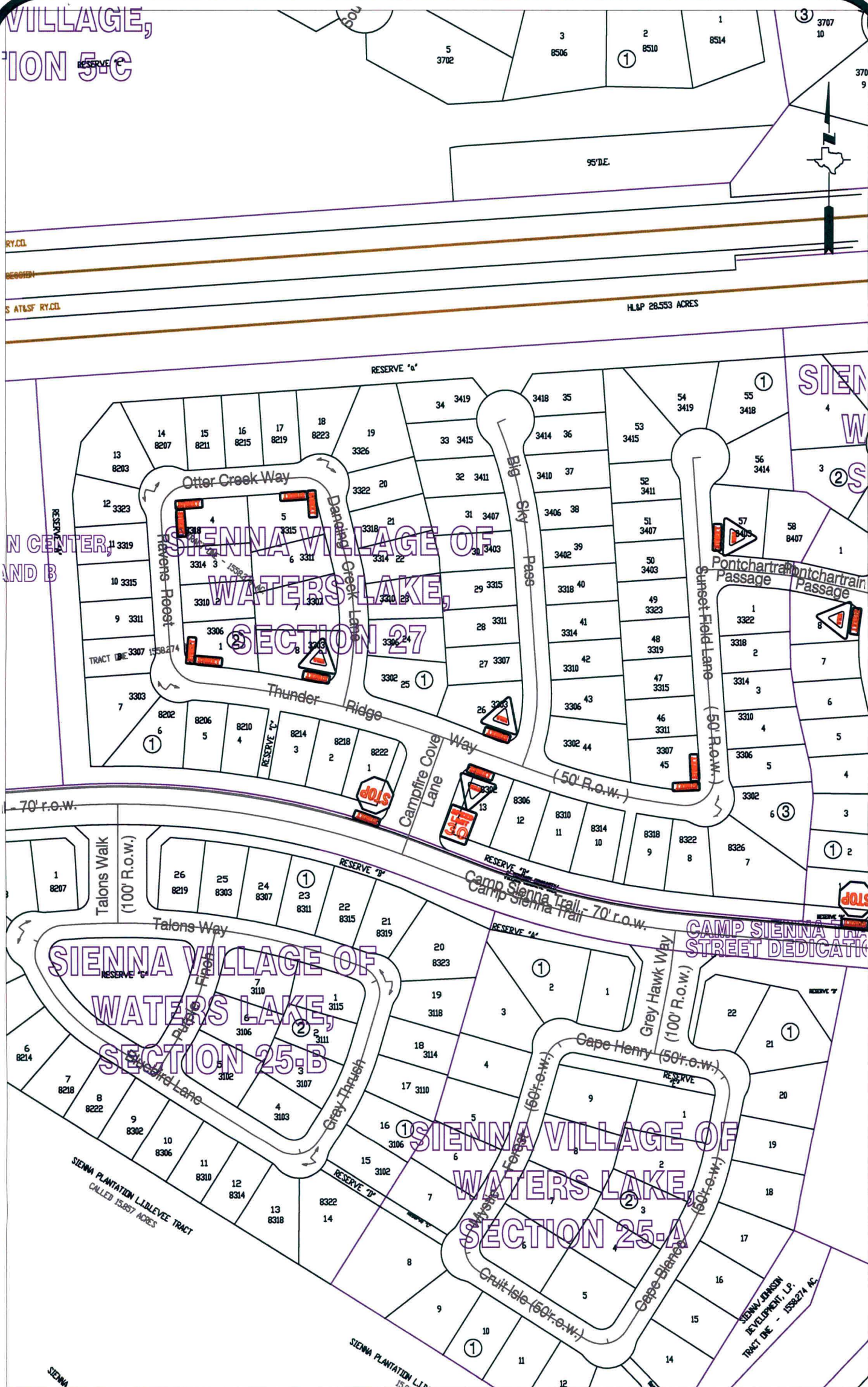
Scale

1" = 200'-0"

Sienna Village of Water's Lake,
Section 19
Control Map and
Traffic Sign Layout

Fort Bend County Engineering Dept.
1124 Blume Road
Rosenberg, Texas 77471

VILLAGE,
TION 5-C



Note:

The purpose of this traffic control plan is to establish traffic control for Sienna Village of Water's Lake, Section 27.

Drawn By: L. Brdecka

Date: 9-17-09

Approved By: Nathan Hatcher

Date: 9-17-09

Scale

1" = 200'-0"

Sienna Village of Water's Lake,
Section 27

Control Map and
Traffic Sign Layout

Fort Bend County Engineering Dept.
1124 Blume Road
Rosenberg, Texas 77471



Note:

The purpose of this traffic control plan is to establish traffic control for Sienna Steep Bank Village, Section 16.

Drawn By: L. Brdecka

Date: 9-18-09

Approved By: Nathan Hatcher

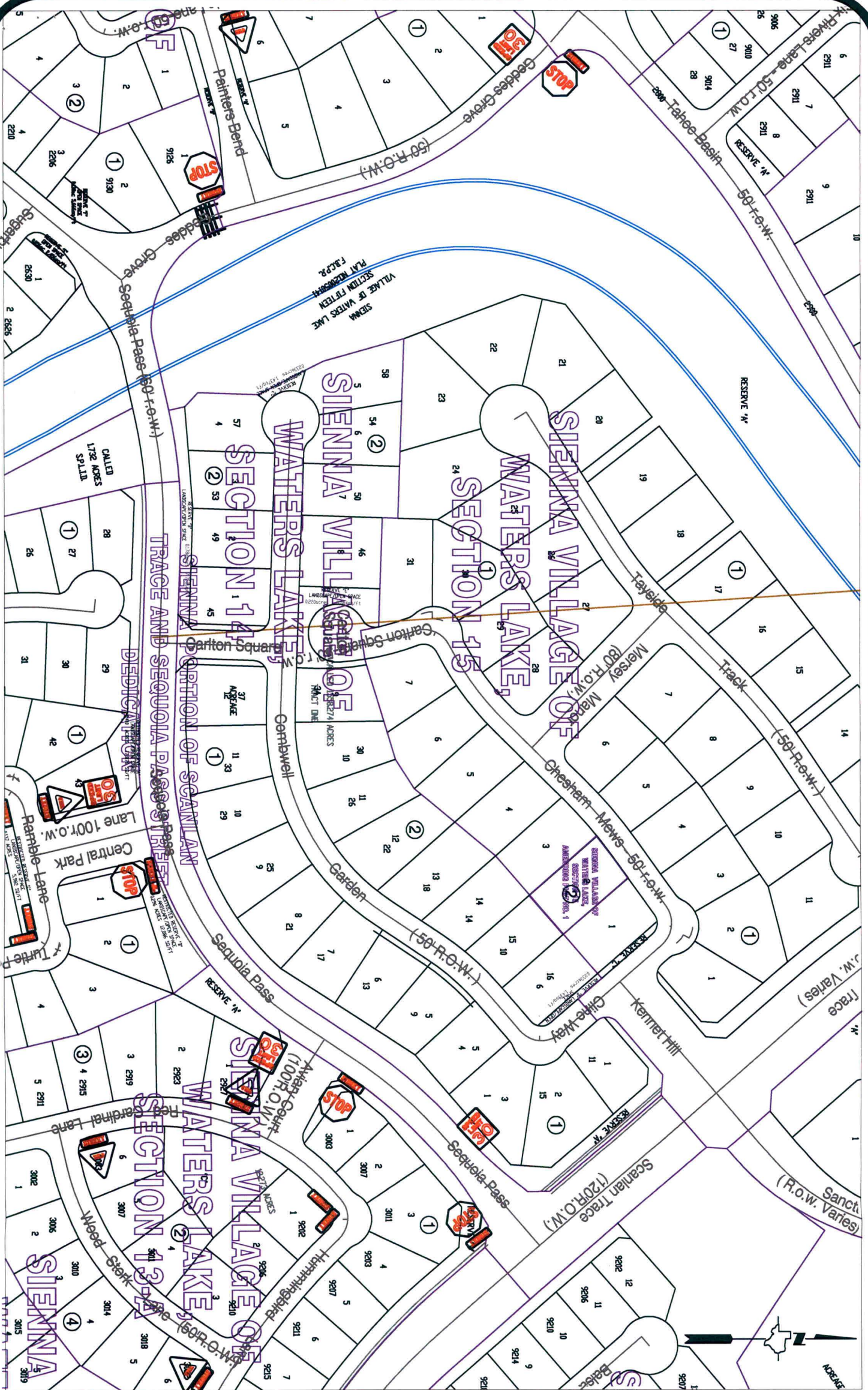
Date: 9-18-09

Scale

1" = 200'-0"

**Sienna Steep Bank Village,
Section 16
Control Map and
Traffic Sign Layout**

Fort Bend County Engineering Dept.
1124 Blume Road
Rosenberg, Texas 77471



Note:

The purpose of this traffic control plan is to establish traffic control for Sienna Portion of Scanlan Trace and Sequoia Pass Street Dedication.

Drawn By: L. Brdecka

Date: 9-17-09

Approved By: Nathan Hatcher

Date: 9-17-09

Scale

1" = 200'-0"

Sienna Portion of Scanlan Trace and Sequoia Pass STD Control Map and Traffic Sign Layout

Fort Bend County Engineering Dept.
1124 Blume Road
Rosenberg, Texas 77471