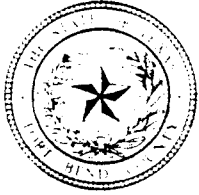


5B1



FORT BEND COUNTY ENGINEERING

Fort Bend County, Texas

D. Jesse Hegemier
County Engineer

September 15, 2009

Commissioner Richard Morrison
Fort Bend County Precinct 1
1517 Ransom Road, Suite 300
Richmond, Texas 77469

**RE: River's Edge, Section 5 -Traffic Control Plan
River's Edge, Section 6**

Dear Commissioner:

Fort Bend County Engineering has completed and recommends approval of the traffic control plan for the above referenced subdivision. The public hearing date for acceptance of the plan is being scheduled.

A copy of the traffic control plan is attached for your review. If you should have any questions, please give me a call.

Sincerely,

A handwritten signature in black ink, appearing to read "Nathan D. Hatcher", is written over the word "Sincerely,".

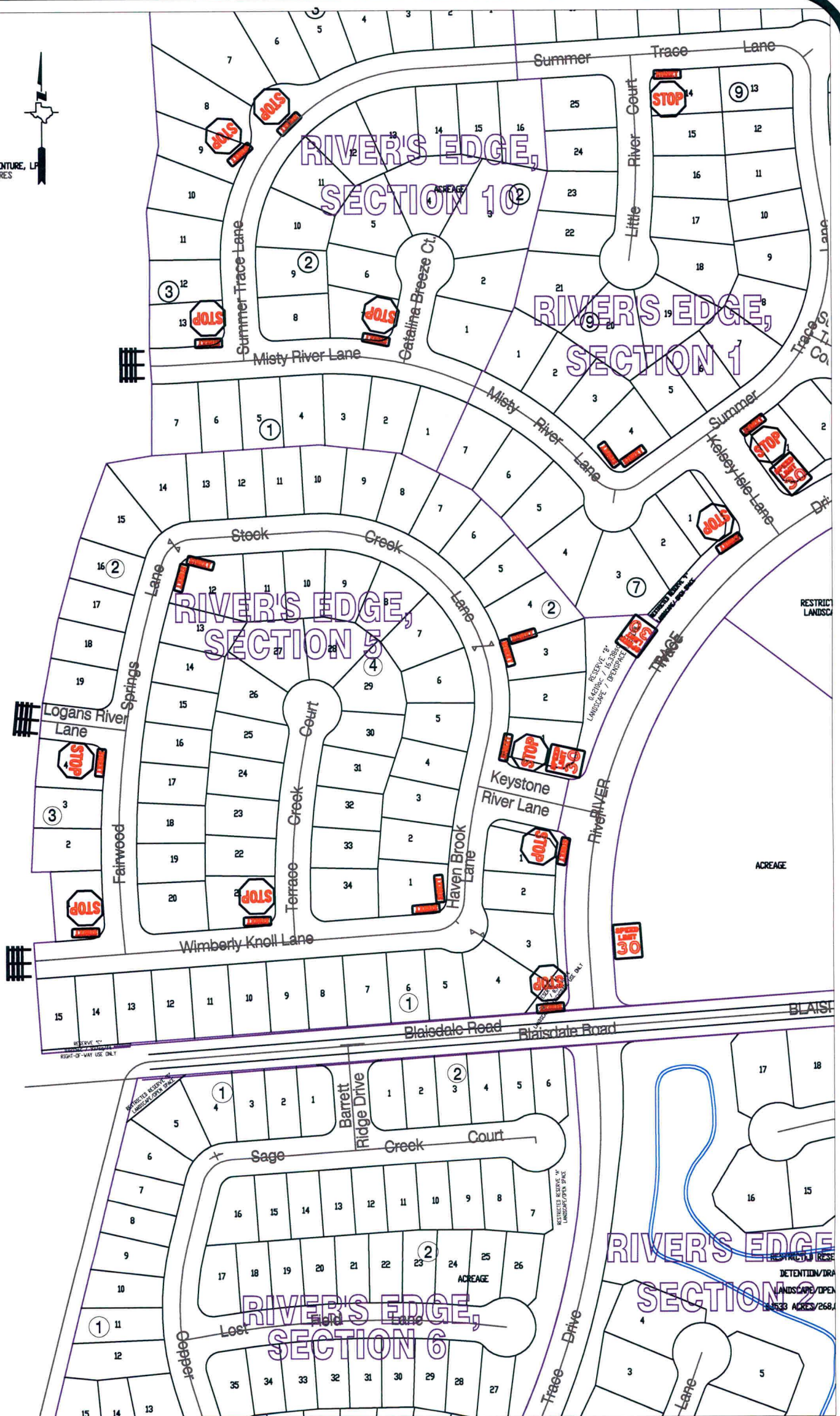
Nathan D. Hatcher
Assistant to County Engineer

NDH/mjs

cc: Judge Robert E. Hebert, County Judge
Marc Grant - FBC Road & Bridge
Marc Grant - Signage Department
File

RIVER'S EDGE VENTURE, LP
177.442 ACRES

URE, LP.



Note:

The purpose of this traffic control plan is to establish traffic control for River's Edge, Section 5.

Drawn By: L. Brdecka

Date: 9-14-09

Approved By: Nathan Hatcher

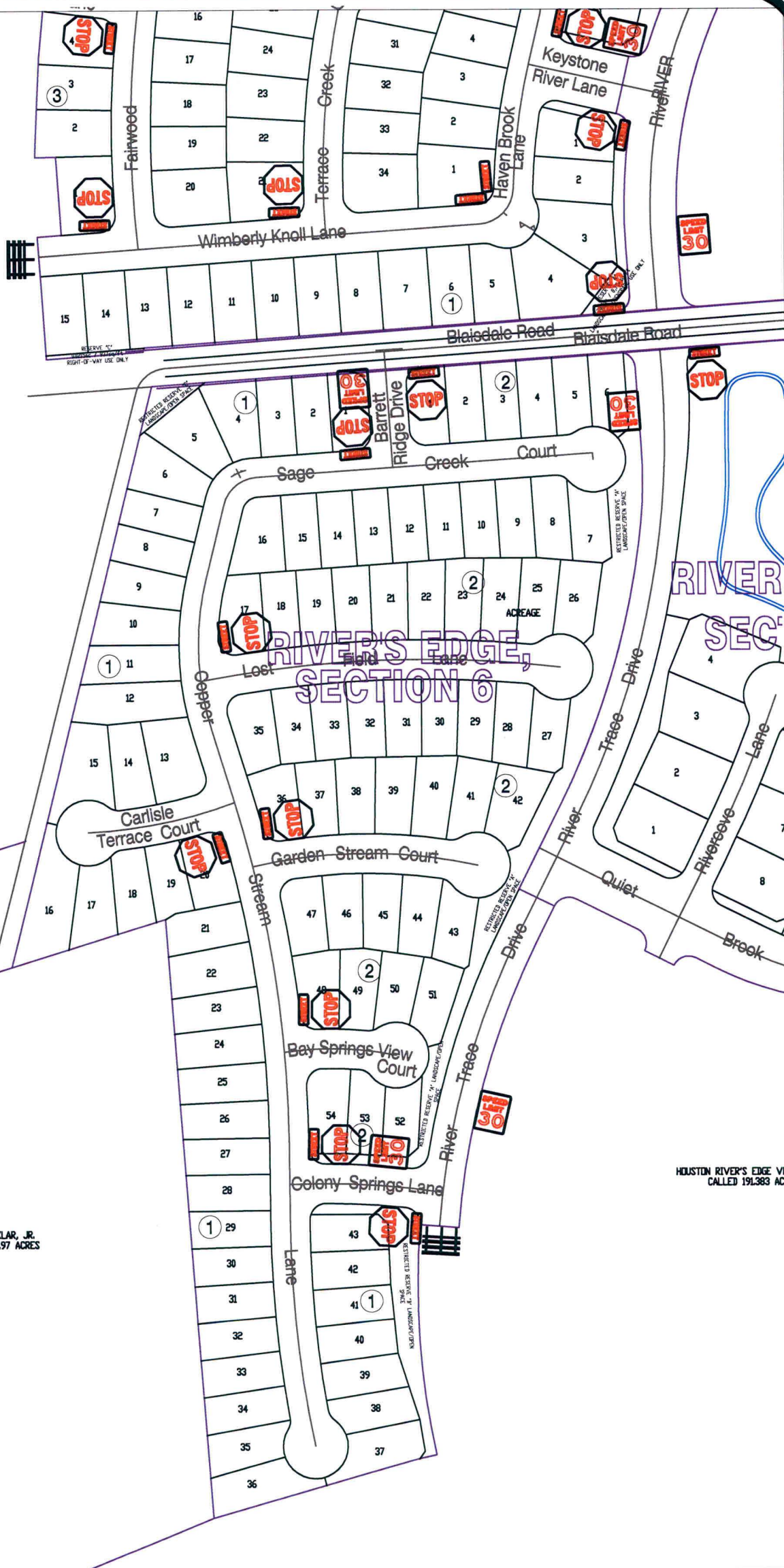
Date: 9-14-09

Scale

1" = 200'-0"

**River's Edge, Section 5
Control Map and
Traffic Sign Layout**

Fort Bend County Engineering Dept.
1124 Blume Road
Rosenberg, Texas 77471



JUNE WINDROW
AND WILLIAM C. WINDROW
CALLED 13.957 ACRES

HOUSTON RIVER'S EDGE VENTURE, L.P.
CALLED 191.383 ACRES

D. W. DEORSAM, ET UX
CALLED 2.573 ACRES

ADOLF SKLAR, JR.
CALLED 15.97 ACRES

HOUSTON RIVER'S EDGE VENTURE, L.P.
CALLED 191.383 ACRES

Note:

The purpose of this traffic control plan is to establish traffic control for River's Edge, Section 6.

Drawn By: L. Brdecka

Date: 9-14-09

Approved By: Nathan Hatcher

Date: 9-14-09

Scale
1" = 200'-0"

**River's Edge, Section 6
Control Map and
Traffic Sign Layout**

Fort Bend County Engineering Dept.
1124 Blume Road
Rosenberg, Texas 77471