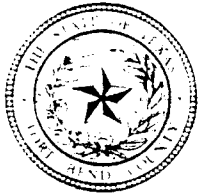


6A



FORT BEND COUNTY ENGINEERING

Fort Bend County, Texas

D. Jesse Hegemier
County Engineer

July 28, 2009

Commissioner James Patterson
Fort Bend County Precinct 4
12919 Dairy Ashford Road
Sugar Land, Texas 77478

**RE: Meridian Park at Riverstone -Traffic Control Plan
Crescent View Estates at Riverstone
Hartford Landing at Riverstone
Senova at Riverstone**

Dear Commissioner:

Fort Bend County Engineering has completed and recommends approval of the traffic control plan for the above referenced subdivision. The public hearing date for acceptance of the plan is being scheduled.

A copy of the traffic control plan is attached for your review. If you should have any questions, please give me a call.

Sincerely,

A handwritten signature in black ink, appearing to read "Nathan D. Hatcher".

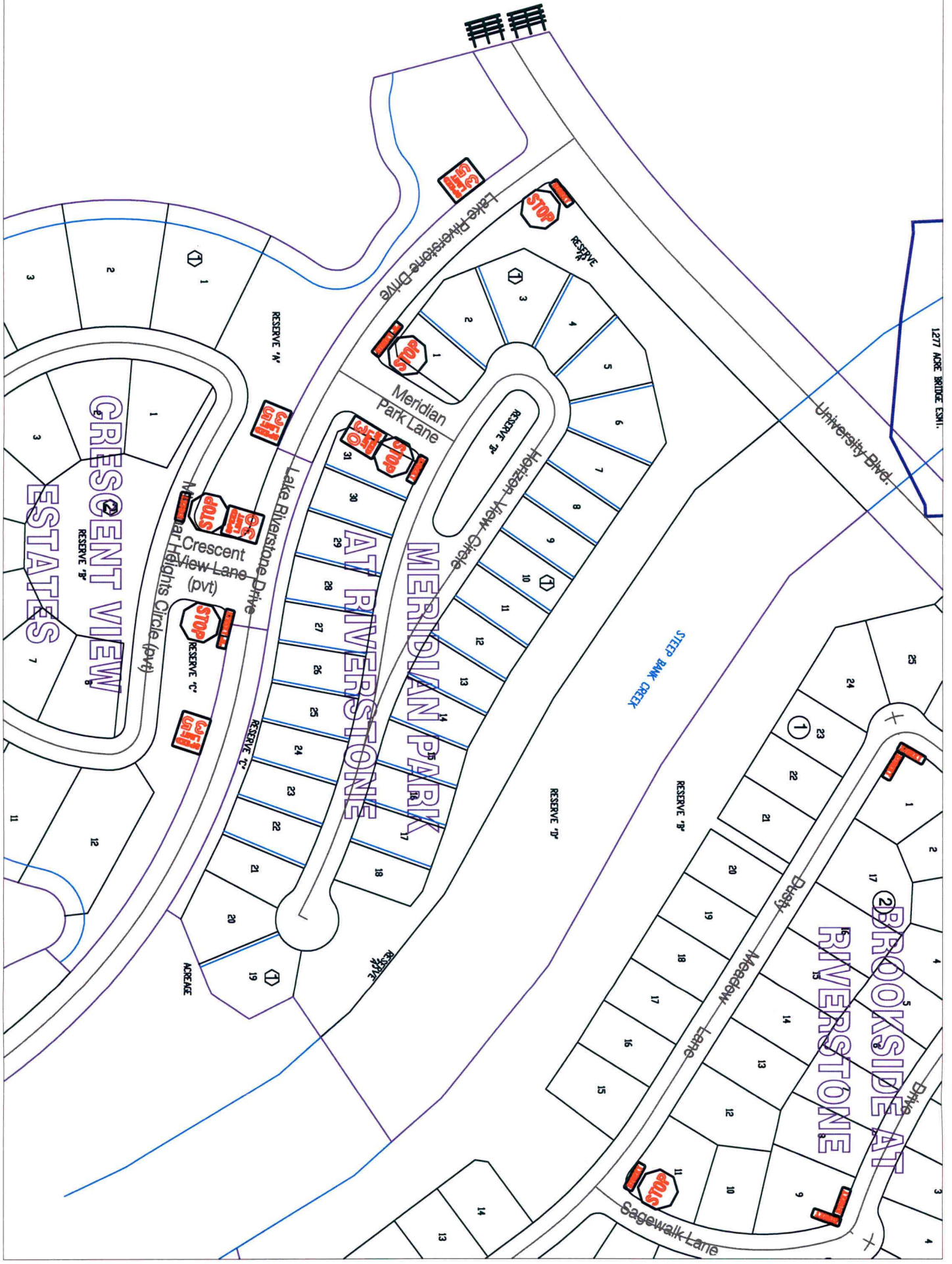
Nathan D. Hatcher
Assistant to County Engineer

NDH/mjs

cc: Judge Robert E. Hebert, County Judge
Marc Grant - FBC Road & Bridge
Marc Grant - Signage Department
File



AREA:
CALL 689-1921 ADDRESS
SUGAR LAND RANCH DEVELOPMENT II CORP.



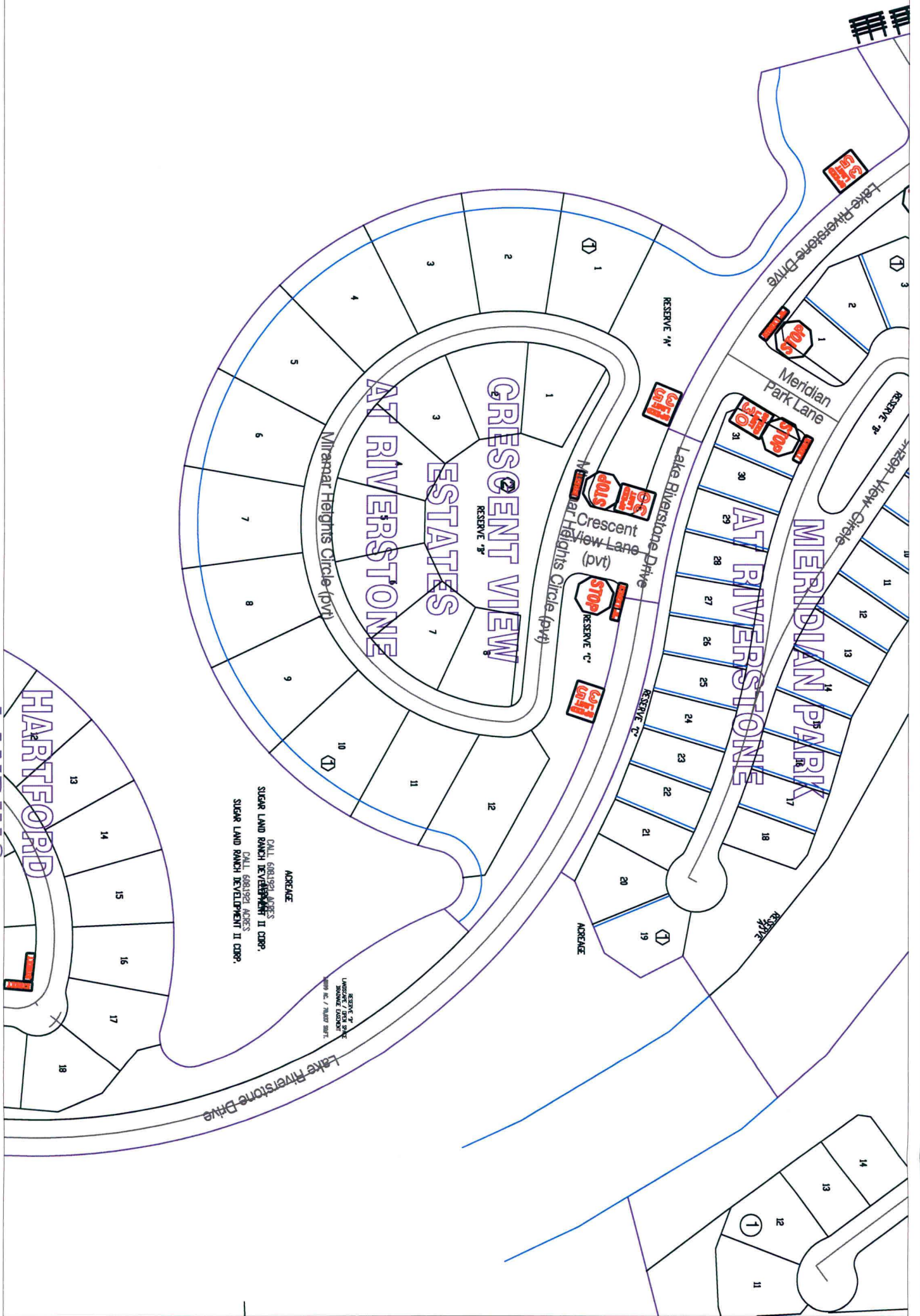
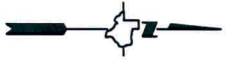
Note:

The purpose of this traffic control plan is to establish traffic control for Meridian Park at Riverstone.

Drawn By: L. Brdecka
Date: 7-28-09
Approved By: Nathan Hatcher
Date: 7-28-09
Scale
1" = 200'-0"

**Meridian Park at Riverstone
Control Map and
Traffic Sign Layout**

Fort Bend County Engineering Dept.
1124 Blume Road
Rosenberg, Texas 77471

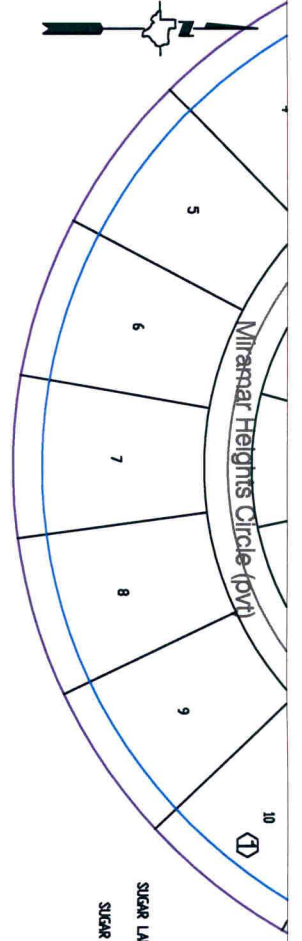


Note:

The purpose of this traffic control plan is to establish traffic control for Crescent View Estates at Riverstone.

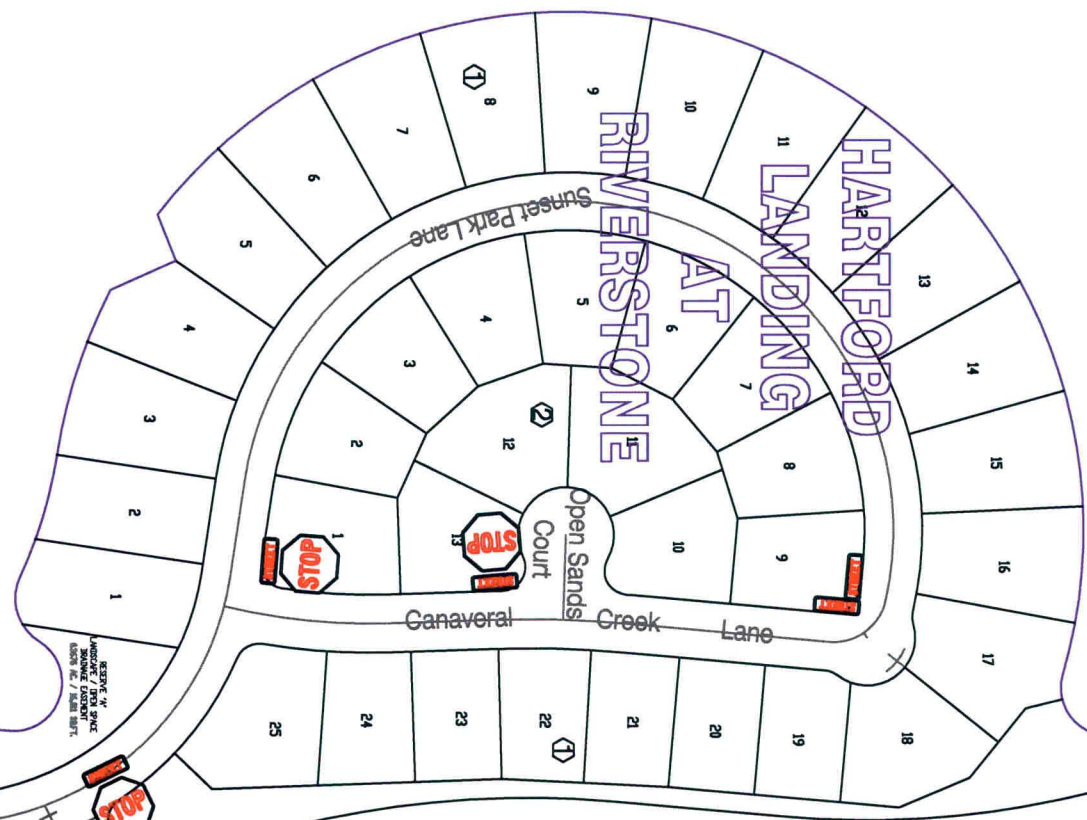
Drawn By: L. Brdecka
 Date: 7-28-09
 Approved By: Nathan Hatcher
 Date: 7-28-09
 Scale
 1" = 200'-0"

**Crescent View Estates at Riverstone
 Control Map and
 Traffic Sign Layout**
 Fort Bend County Engineering Dept.
 1124 Blume Road
 Rosenberg, Texas 77471



ACREAGE
CALL 6881391 ADRES
SUGAR LAND RANCH DEVELOPMENT II CORP.
CALL 6881391 ADRES
SUGAR LAND RANCH DEVELOPMENT II CORP.

RESERVE "A"
LANDSCAPE / POOL SPACE
REMOVING EXISTENT
CROSSING NO. 7 / 7/20/07 SBLT.



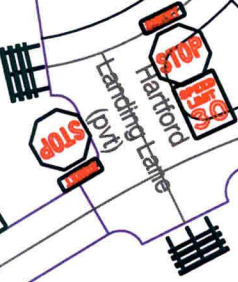
ACREAGE
CALL 6881391 ADRES
SUGAR LAND RANCH DEVELOPMENT II CORP.

ACREAGE
CALL 5977707 ADRES
AND RANCH DEVELOPMENT II CORP.

ACREAGE
REMAINDER CALL 24974 ADRES
HILLSBORO ESTATES

ACREAGE
PORTION OF CALL 24974 ADRES
HILLSBORO ESTATES

AT
KE
AT



Note:
The purpose of this traffic control plan is to establish traffic control for Hartford Landing at Riverstone.

Drawn By: L. Brdecka
Date: 7-28-09
Approved By: Nathan Hatcher
Date: 7-28-09
Scale
1" = 200'-0"

**Hartford Landing at Riverstone
Control Map and
Traffic Sign Layout**

Fort Bend County Engineering Dept.
1124 Blume Road
Rosenberg, Texas 77471



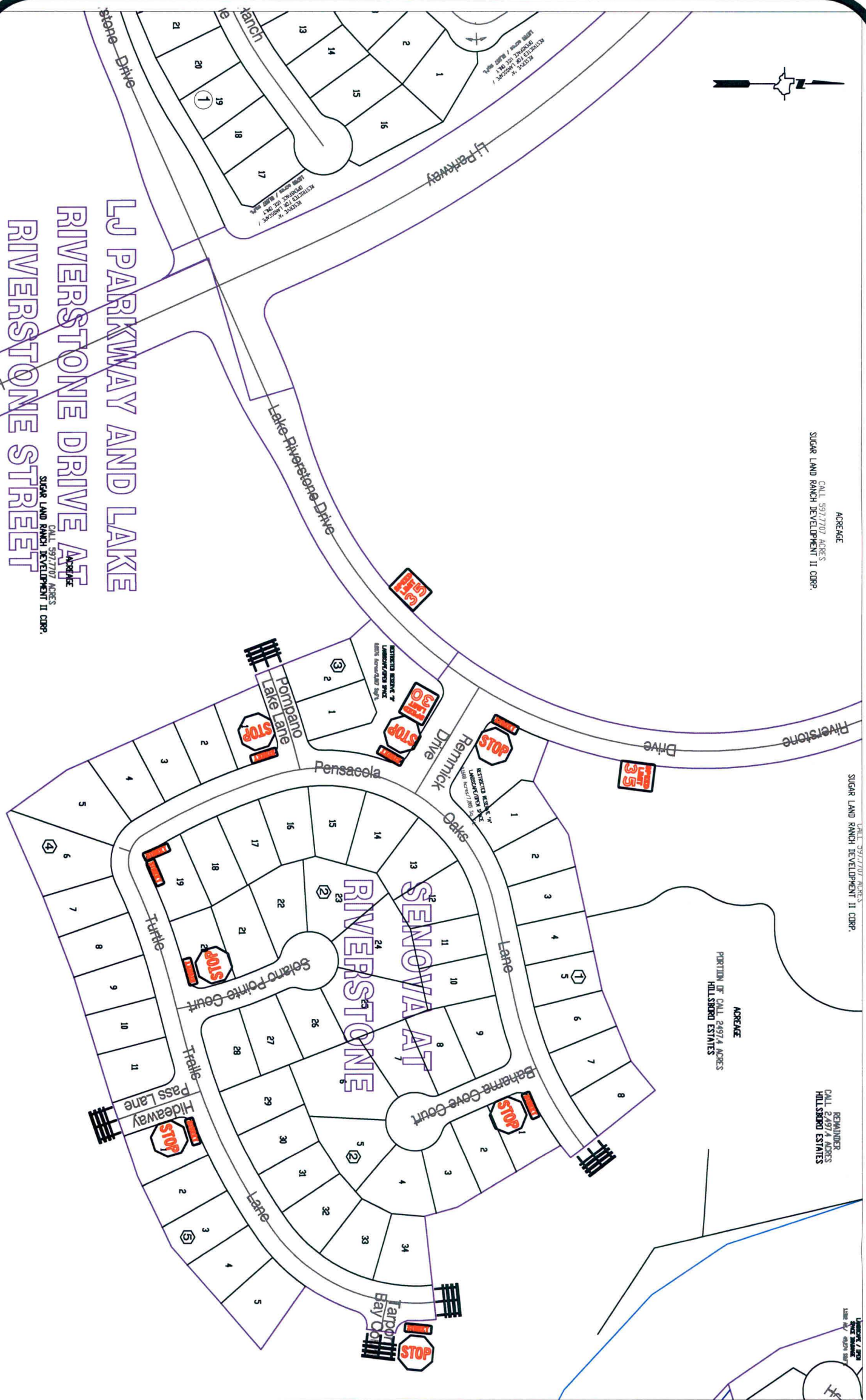
ACREAGE
CALL 597.7707
SUGAR LAND RANCH DEVELOPMENT II CORP.

ACREAGE
CALL 597.7707
SUGAR LAND RANCH DEVELOPMENT II CORP.

ACREAGE
PORTION OF CALL 24974 ACRES
HILLSBORO ESTATES

REMANDER
CALL 24974 ACRES
HILLSBORO ESTATES

LANDSCAPE / CIVIL
CALL 597.7707
SUGAR LAND RANCH DEVELOPMENT II CORP.



LJ PARKWAY AND LAKE
RIVERSTONE DRIVE AT
RIVERSTONE STREET

ACREAGE
CALL 597.7707
SUGAR LAND RANCH DEVELOPMENT II CORP.

Note:

The purpose of this traffic control plan is to establish traffic control for Senova at Riverstone.

Drawn By: L. Brdecka
Date: 7-28-09
Approved By: Nathan Hatcher
Date: 7-28-09
Scale
1" = 200'-0"

**Senova at Riverstone
Control Map and
Traffic Sign Layout**

Fort Bend County Engineering Dept.
1124 Blume Road
Rosenberg, Texas 77471