

**FORT BEND COUNTY ENGINEERING**

Fort Bend County, Texas

D. Jesse Hegemier  
County Engineer

June 10, 2009

Commissioner W. A. "Andy" Meyers  
Fort Bend County Precinct 3  
1809 Eldridge Road  
Sugar Land, Texas 77478

**RE: Lamar CISD Elementary School No. 21 (Joe Hubenak) -Traffic Control Plan**

Dear Commissioner:

Fort Bend County Engineering has completed and recommends approval of the traffic control plan for the above referenced school site. The public hearing date for acceptance of the plan is being scheduled.

A copy of the traffic control plan is attached for your review. If you should have any questions, please give me a call.

Sincerely,

Steven L. Evans  
Assistant to County Engineer

SLE/mjs

cc: Judge Robert E. Hebert, County Judge  
Marc Grant - FBC Road & Bridge  
Marc Grant - Signage Department  
File



Residue of  
995.7214 Acre Tract  
PACIFIC RICHLAND INVESTMENTS

Residue of  
995.7214 Acre Tract  
PACIFIC RICHLAND INVESTMENTS

①  
RESTRICTED RESERVE 'A'  
(RESTRICTED TO SCHOOL USE ONLY)  
13.00 Acres  
566,261 SQ. FT.

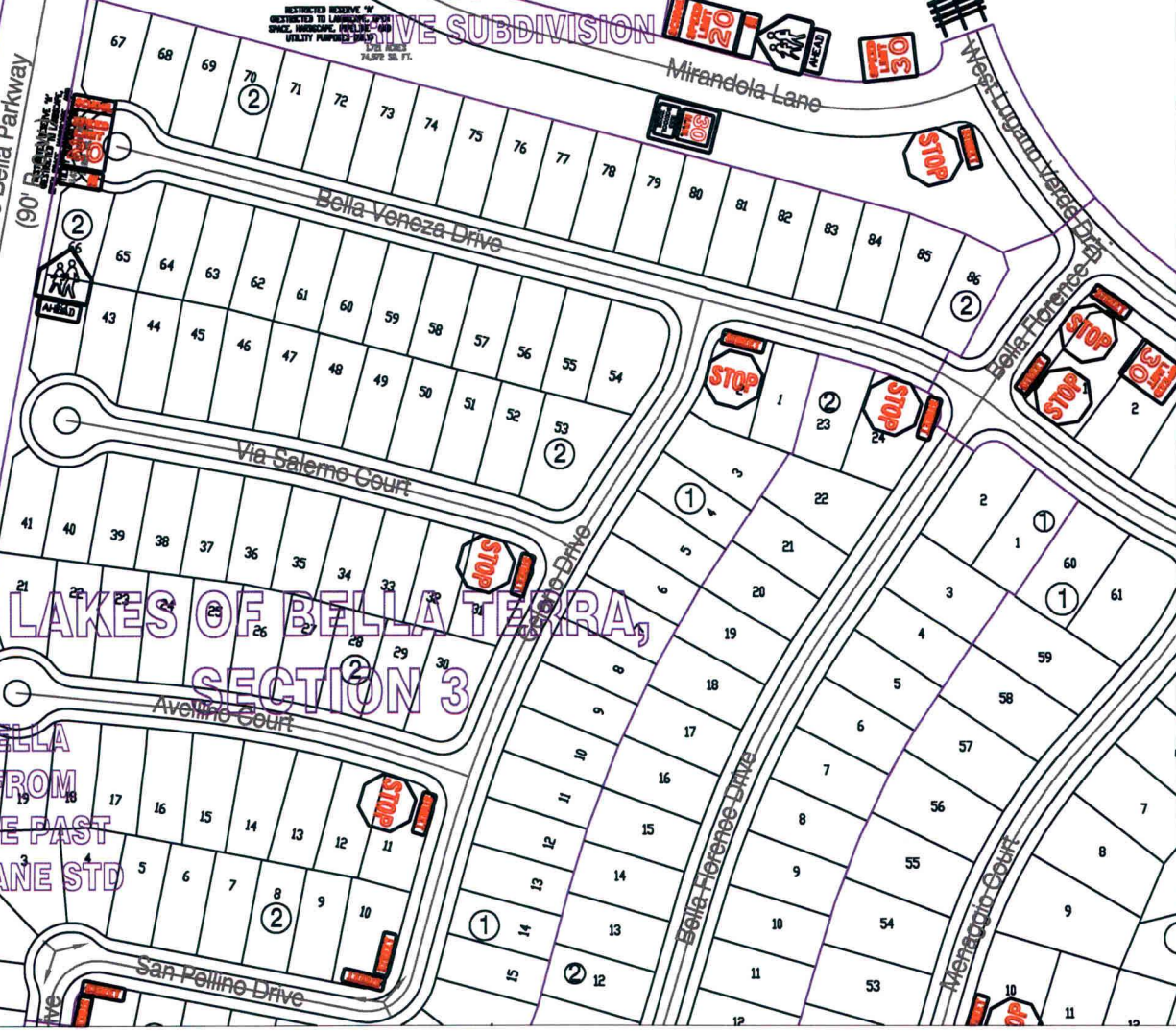
# LAMAR CISD ELEMENTARY SCHOOL NO 21 (Joe Hubenak Elementary)

L.O.B. UNITED PARTNERSHIP  
Residue called 490.7500 Ac.

L.O.B. United Partnership  
Residue of called 490.7500 Acres

MIRANDOLA LANE AND  
WEST LUGANO VERDE  
SUBDIVISION

Rancho Bella Parkway  
(90' Right-of-Way)



LAKES OF BELLA TERRA,  
SECTION 3

RANCHO BELLA  
PARKWAY FROM  
ADOVA DRIVE PAST  
MIRANDOLA LANE STD

**Note:**

The purpose of this traffic control plan is to establish traffic control for Lamar C.I.S.D. Elementary School No. 21 (Joe Hubenak Elementary).

Drawn By: L. Brdecka

Date: 6-8-09

Approved By: Steven L. Evans

Date: 6-8-09

Scale

1" = 200'-0"

Lamar C.I.S.D. Elementary School  
No. 21 (Joe Hubenak Elementary)  
Control Map and Traffic Sign  
Layout

Fort Bend County Engineering Dept.  
1124 Blume Road  
Rosenberg, Texas 77471