

**FORT BEND COUNTY ENGINEERING**

Fort Bend County, Texas

D. Jesse Hegemier  
County Engineer

June 11, 2009

Commissioner Richard Morrison  
Fort Bend County Precinct 1  
1517 Ransom Road, Suite 300  
Richmond, Texas 77469

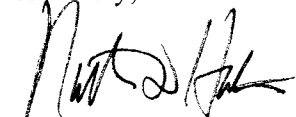
**RE: Lamar CISD Elementary School No. 20 (Cora Thomas) -Traffic Control Plan**

Dear Commissioner:

Fort Bend County Engineering has completed and recommends approval of the traffic control plan for the above referenced school site. The public hearing date for acceptance of the plan is being scheduled.

A copy of the traffic control plan is attached for your review. If you should have any questions, please give me a call.

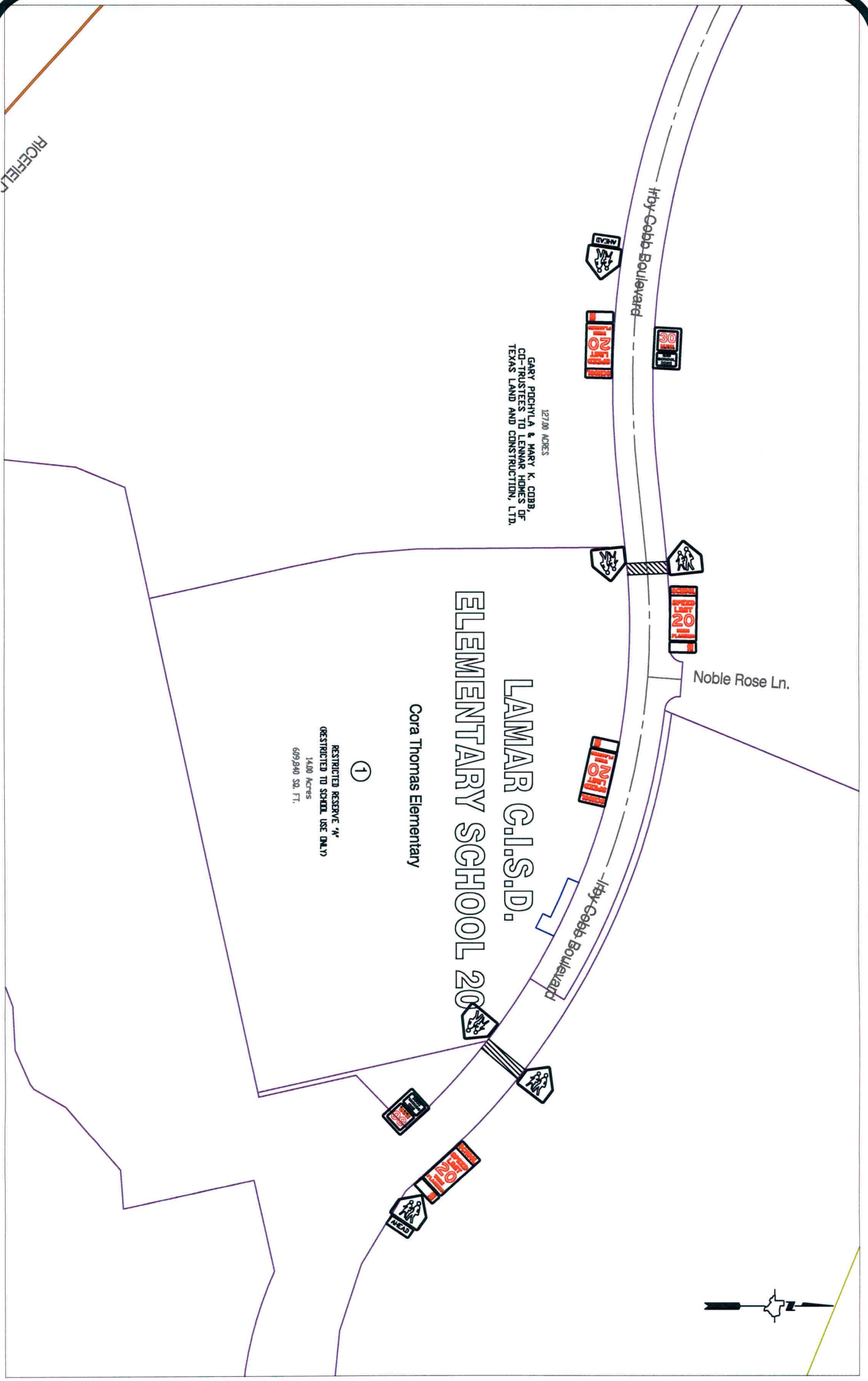
Sincerely,



Nathan D. Hatcher  
Assistant to County Engineer

NDH/mjs

cc: Judge Robert E. Hebert, County Judge  
Marc Grant - FBC Road & Bridge  
Marc Grant - Signage Department  
File



RICEFIELD

12700 ACRES  
 GARY PROHYIA & MARY K. COBB,  
 CO-TRUSTEES TO LENNAR HOMES OF  
 TEXAS LAND AND CONSTRUCTION, LTD.

①  
 RESTRICTED RESERVE  
 1400 Acres  
 RESTRICTED TO SCHOOL USE ONLY  
 609,840 SQ. FT.

LAMAR C.I.S.D.  
 ELEMENTARY SCHOOL NO. 20  
 Cora Thomas Elementary

Noble Rose Ln.



**Note:**

The purpose of this traffic control plan is to establish traffic control for Lamar CISD Elementary School No. 20 (Cora Thomas Elementary).

Drawn By: L. Brdecka  
 Date: 6-3-09  
 Approved By: Nathan Hatcher  
 Date: 6-3-09  
 Scale  
 1" = 200'-0"

Lamar CISD Elementary School No. 20  
 Control Map and  
 Traffic Sign Layout  
 Fort Bend County Engineering Dept.  
 1124 Blume Road  
 Rosenberg, Texas 77471