

SBE



FORT BEND COUNTY ENGINEERING

Fort Bend County, Texas

D. Jesse Hegemier
County Engineer

June 13, 2009

Commissioner W. A. "Andy" Meyers
Fort Bend County Precinct 3
1809 Eldridge Road
Sugar Land, Texas 77478

**RE: Traffic Control Plan -
Grand Mission Boulevard from Bellaire Boulevard to Dow Pipeline and
Beechnut Street from Grand Mission Boulevard to 4,550 LF West including, FBISD
Elementary School #44 and FBISD Middle School #13**

Dear Commissioner:

Fort Bend County Engineering has completed and recommends approval of the traffic control plan for the above referenced. The public hearing date for acceptance of the plan is being scheduled.

A copy of the traffic control plan is attached for your review. If you should have any questions, please give me a call.

Sincerely,

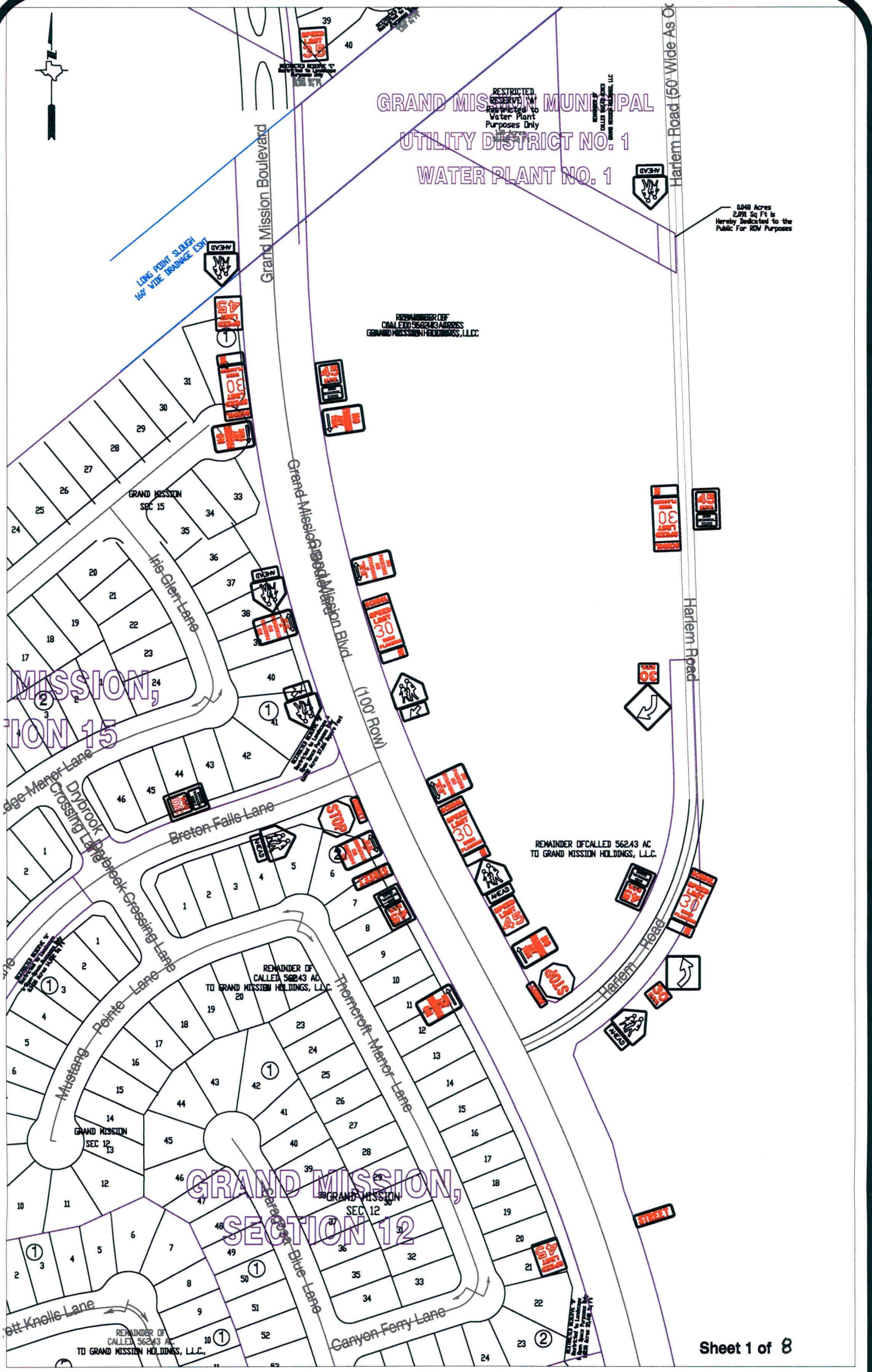
Steven L. Evans
Assistant to County Engineer

SLE/mjs

cc: Judge Robert E. Hebert, County Judge
Marc Grant - FBC Road & Bridge
Marc Grant - Signage Department
File



GRAND MISSION MUNICIPAL
UTILITY DISTRICT NO. 1
WATER PLANT NO. 1



0.048 Acres
2,991 Sq Ft is
Hereby Dedicated to the
Public For ROW Purposes

REMAINDER OF
CALLED 56243 AC
TO GRAND MISSION HOLDINGS, L.L.C.

REMAINDER OF CALLED 56243 AC
TO GRAND MISSION HOLDINGS, L.L.C.

REMAINDER OF
CALLED 56243 AC
TO GRAND MISSION HOLDINGS, L.L.C.

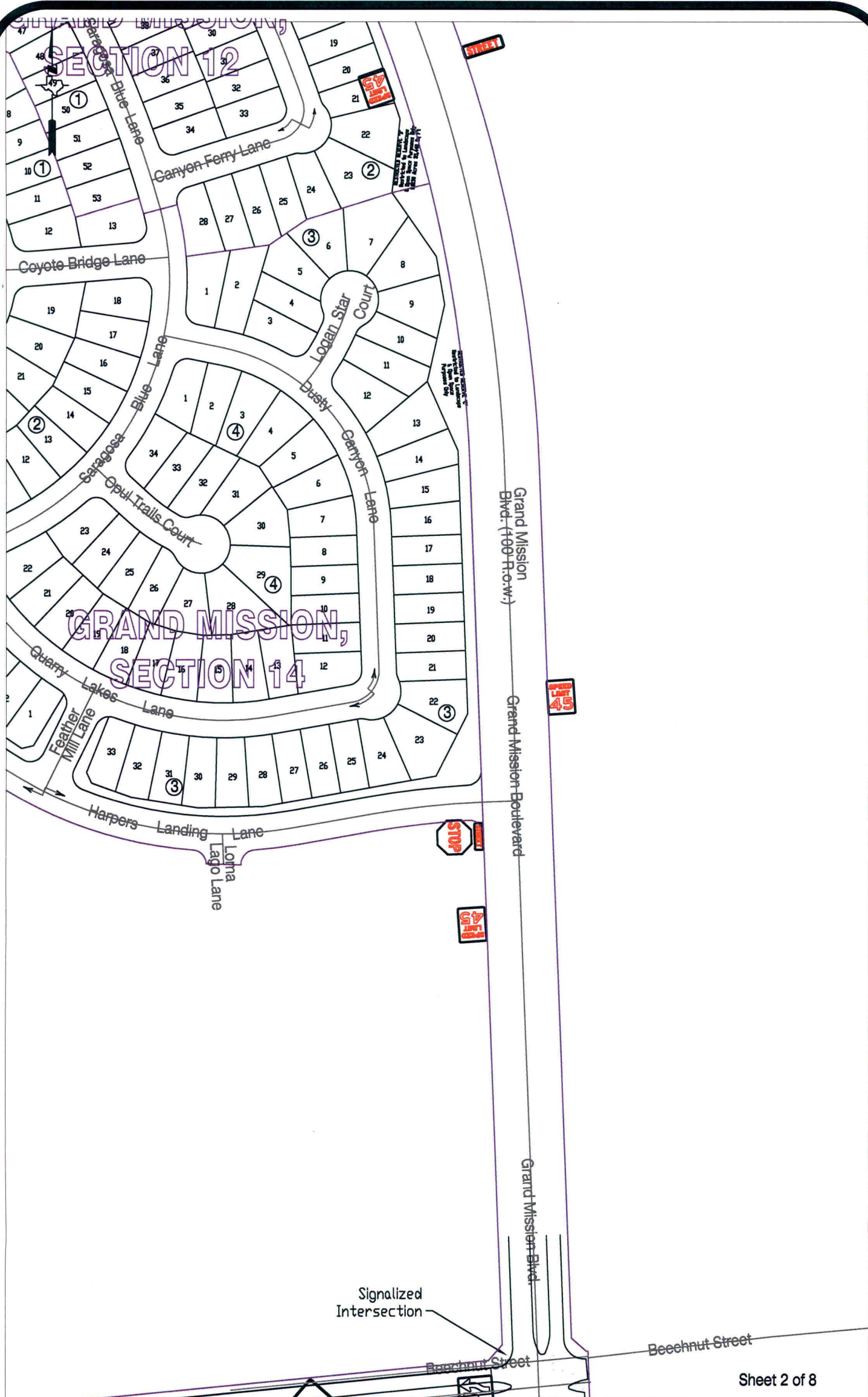
REMAINDER OF
CALLED 56243 AC
TO GRAND MISSION HOLDINGS, L.L.C.

Note:

The purpose of this traffic control plan is to establish traffic control for the plat of Grand Mission Boulevard from Bellaire Boulevard to Dow Pipeline, including Beechnut Street from Grand Mission Boulevard to FBISD Middle School #13.

Drawn By: L. Brdecka
Date: 5-20-09
Approved By: Steven L. Evans
Date: 5-20-09
Scale
1" = 200'-0"

Grand Mission Blvd. from Longpoint Slough to Bradford Park, Sec. , Beechnut St. from Grand Mission Blvd. to FBISD Middle School #13 Control Map and Traffic Sign Layout
Fort Bend County Engineering Dept.
1124 Blume Road
Rosenberg, Texas 77471



Note:

The purpose of this traffic control plan is to establish traffic control for the plat of Grand Mission Boulevard from Bellaire Boulevard to Dow Pipeline, including Beechnut Street from Grand Mission Boulevard to FBISD Middle School No. 13.

Drawn By: L. Brdecka
 Date: 6-16-09
 Approved By: Steven L. Evans
 Date: 6-16-09
 Scale
 1" = 200'-0"

Grand Mission Boulevard from Longpoint Slough to Bradford Park, Section 1, Beechnut Street from Grand Mission Boulevard to FBISD Middle School #13 Control Map and Traffic Sign Layout

Fort Bend County Engineering Dept.
 1124 Blume Road
 Rosenberg, Texas 77471



Signalized Intersection

Beechnut Street

Grand Mission Blvd.

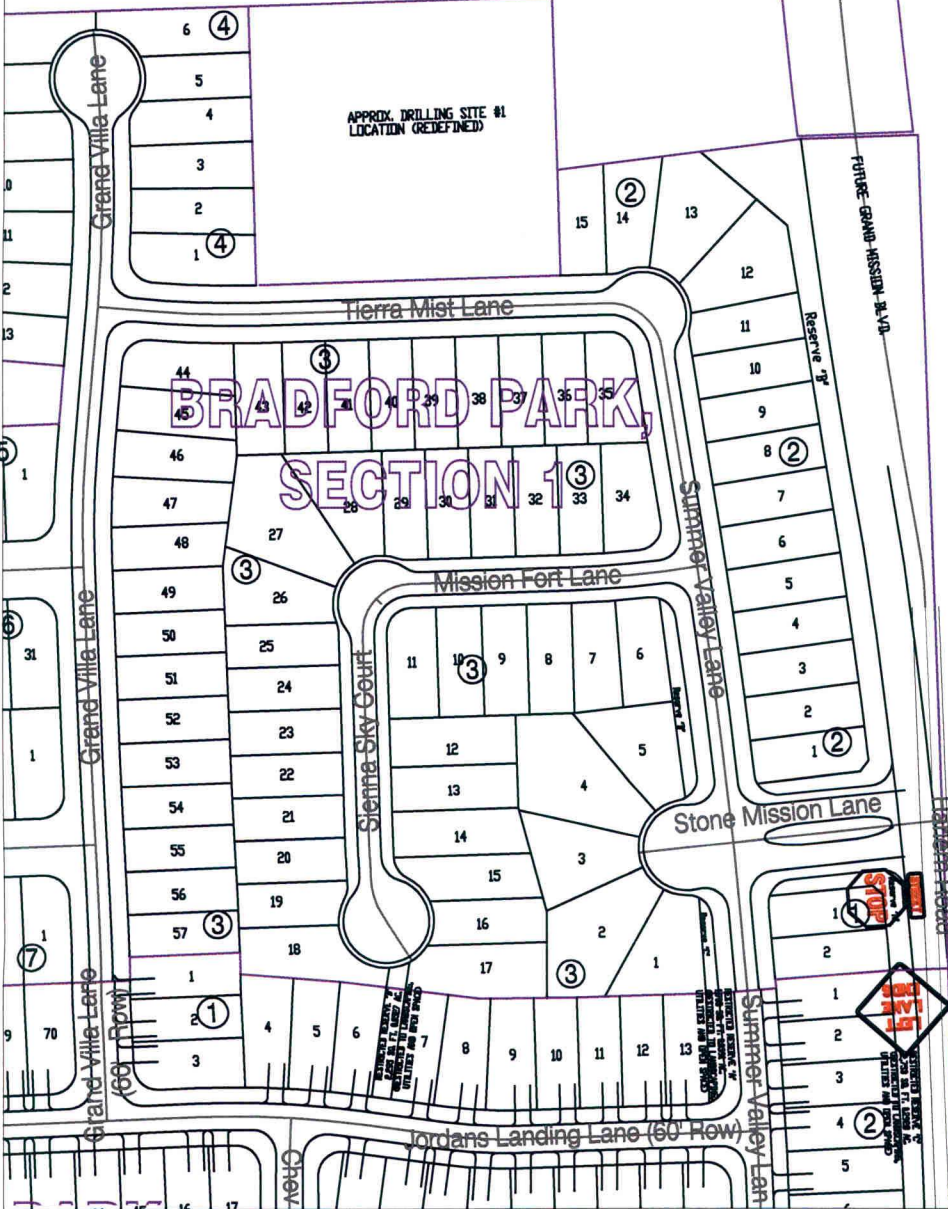
Grand Mission Blvd.

CALLED 231.742 ACRES TO TXI OPERATIONS, L.P.

REMAINDER OF CALLED 562.43 AC TO GRAND MISSION HOLDINGS, L.L.C. BY

APPROX. DRILLING SITE #1 LOCATION (REDEFINED)

BRADFORD PARK, SECTION 1



TO TXI OPERATIONS, L.P.

Sheet 3 of 8

Note:

The purpose of this traffic control plan is to establish traffic control for the plat of Grand Mission Boulevard from Bellaire Boulevard to Dow Pipeline, including Beechnut Street from Grand Mission Boulevard to FBISD Middle School No. 13.

Drawn By: L. Brdecka

Date: 6-16-09

Approved By: Steven L. Evans

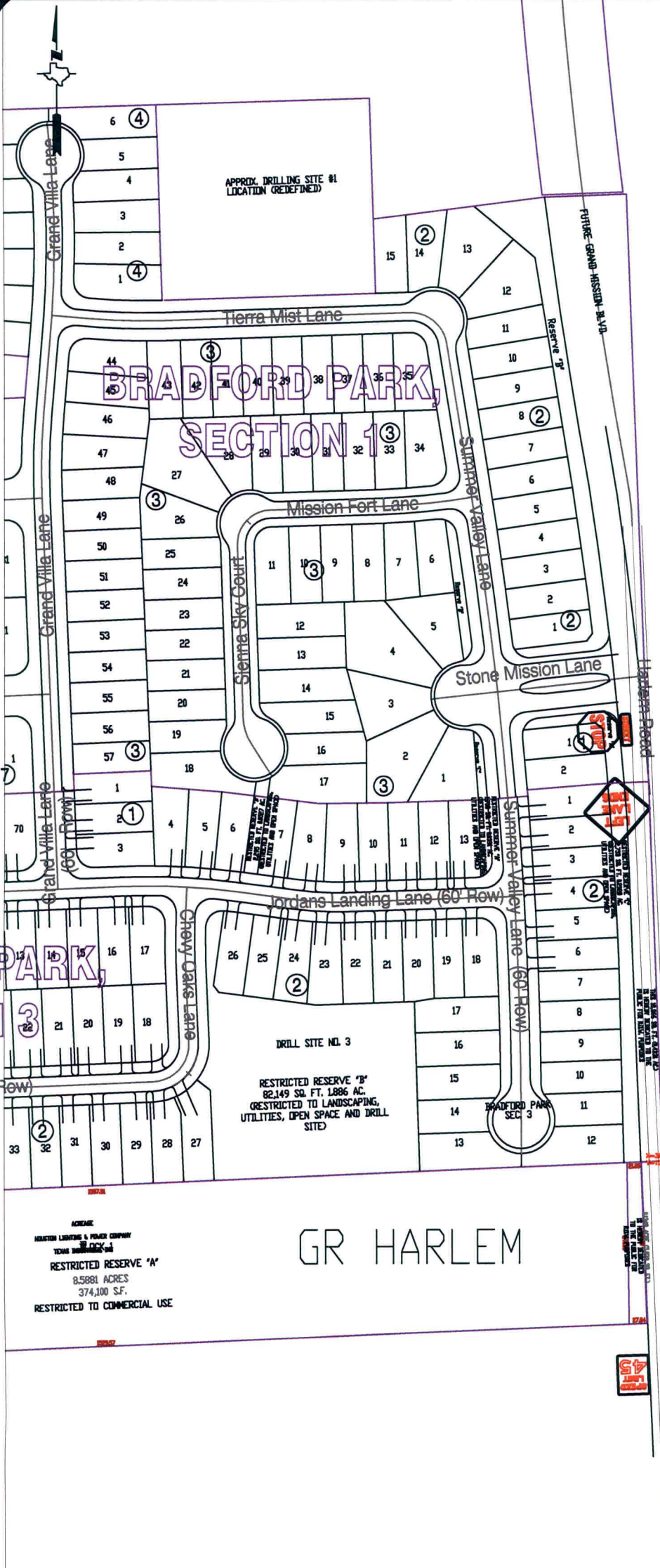
Date: 6-16-09

Scale

1" = 200'-0"

Grand Mission Boulevard from Longpoint Slough to Bradford Park, Section 1, Beechnut Street from Grand Mission Boulevard to FBISD Middle School #13 Control Map and Traffic Sign Layout

Fort Bend County Engineering Dept.
1124 Blume Road
Rosenberg, Texas 77471



TO TXI OPERATIONS, L.P.

HARLEM ROAD
(FUTURE GRAND MISSION BOULEVARD)
(R.O.W. VARIES)

TERRAVISTA LAKES, L.L.C.

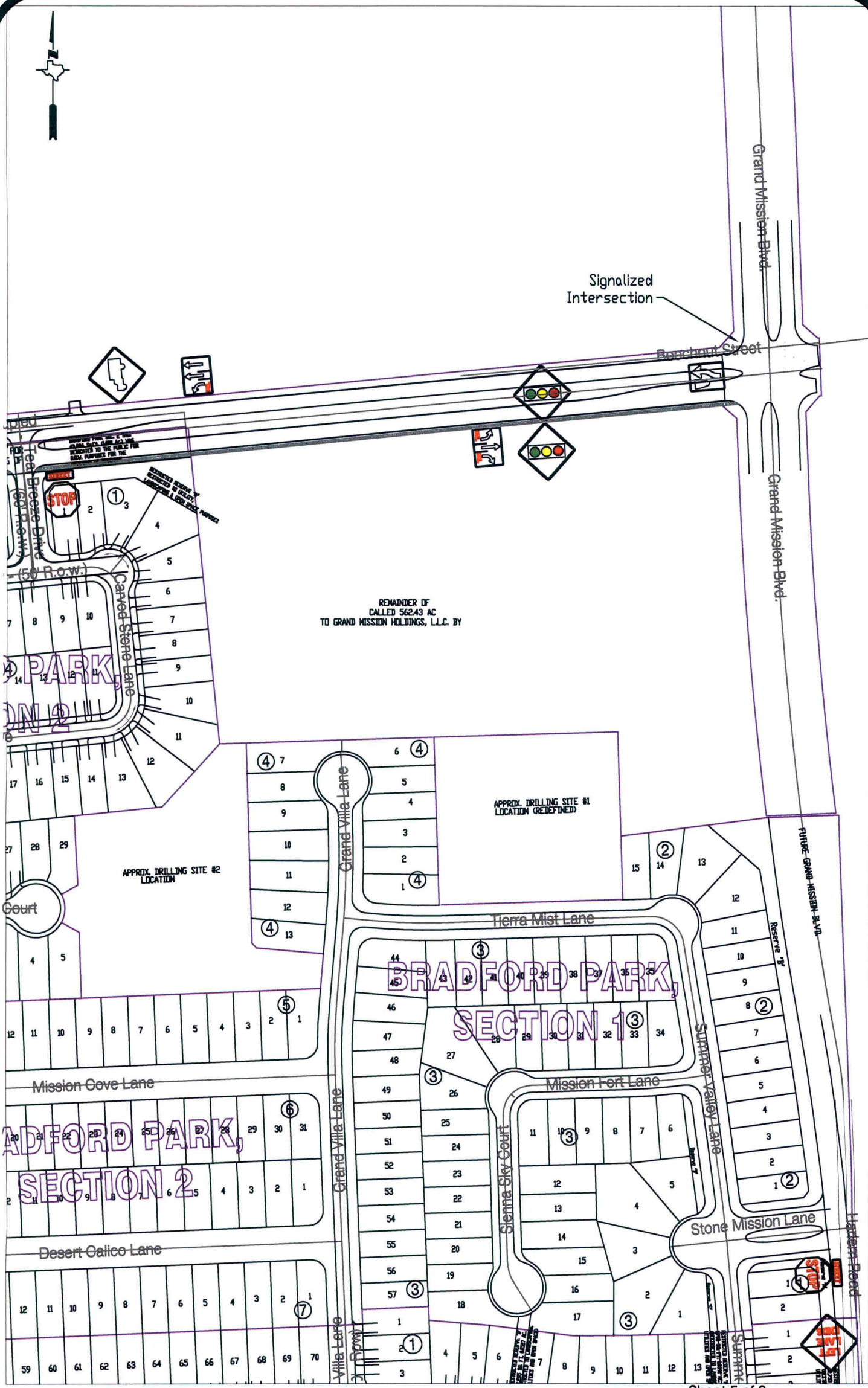
BENNIE PAUL BOND, ET AL

Note:
The purpose of this traffic control plan is to establish traffic control for the plat of Grand Mission Boulevard from Bellaire Boulevard to Dow Pipeline, including Beechnut Street from Grand Mission Boulevard to FBISD Middle School No. 13.

Drawn By: L. Brdecka
Date: 6-16-09
Approved By: Steven L. Evans
Date: 6-16-09
Scale
1" = 200'-0"

Grand Mission Boulevard from Longpoint Slough to Bradford Park, Section 1, Beechnut Street from Grand Mission Boulevard to FBISD Middle School #13 Control Map and Traffic Sign Layout

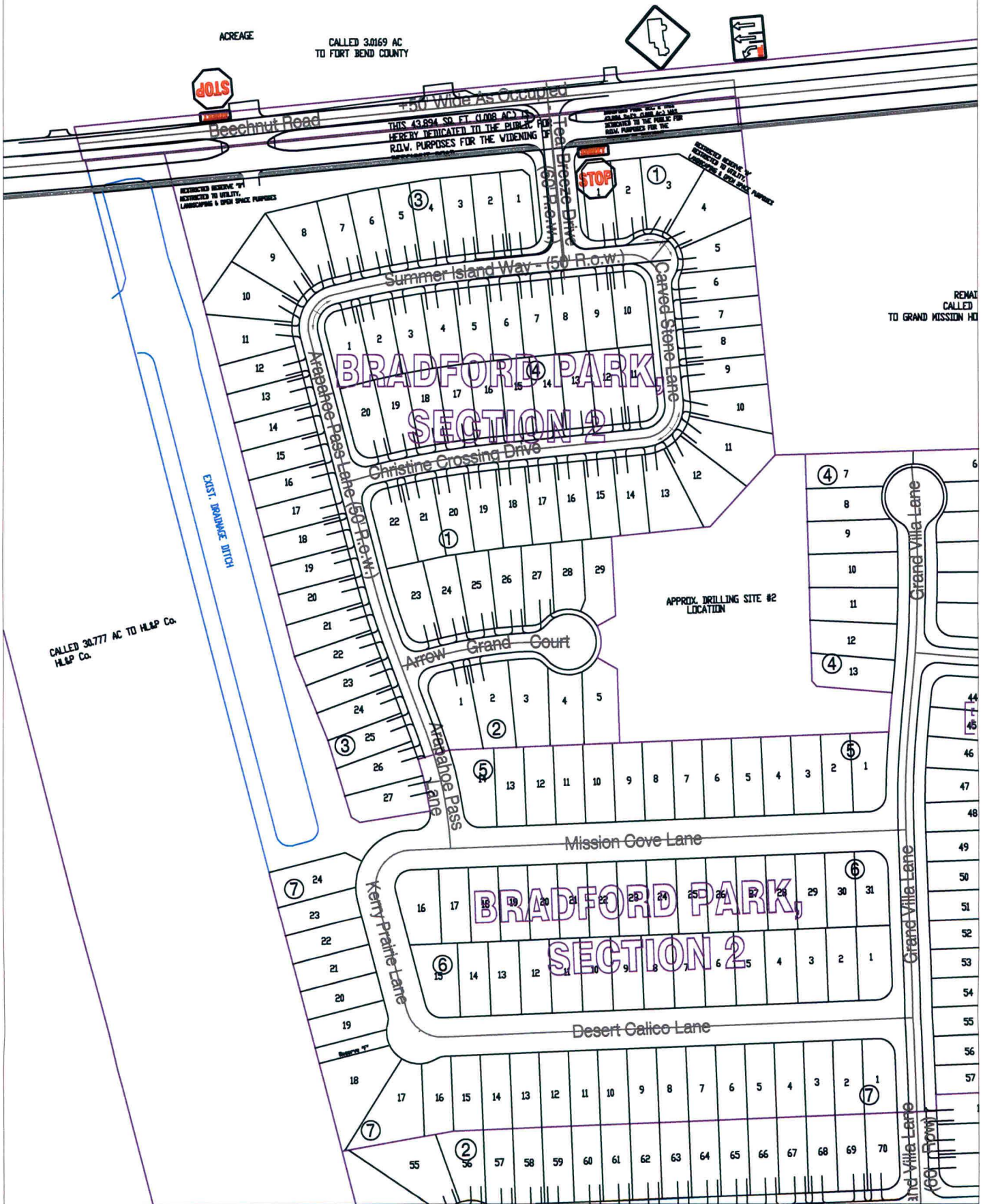
Fort Bend County Engineering Dept.
1124 Blume Road
Rosenberg, Texas 77471



Note:
 The purpose of this traffic control plan is to establish traffic control for the plat of Grand Mission Boulevard from Bellaire Boulevard to Dow Pipeline, including Beechnut Street from Grand Mission Boulevard to FBISD Middle School No. 13.

Drawn By: L. Brdecka
 Date: 6-16-09
 Approved By: Steven L. Evans
 Date: 6-16-09
 Scale
 1" = 200'-0"

Grand Mission Boulevard from Longpoint Slough to Bradford Park, Section 1, Beechnut Street from Grand Mission Boulevard to FBISD Middle School #13 Control Map and Traffic Sign Layout
 Fort Bend County Engineering Dept.
 1124 Blume Road
 Rosenberg, Texas 77471



Note:

The purpose of this traffic control plan is to establish traffic control for the plat of Grand Mission Boulevard from Bellaire Boulevard to Dow Pipeline, including Beechnut Street from Grand Mission Boulevard to FBISD Middle School No. 13.

Drawn By: L. Brdecka

Date: 6-16-09

Approved By: Steven L. Evans

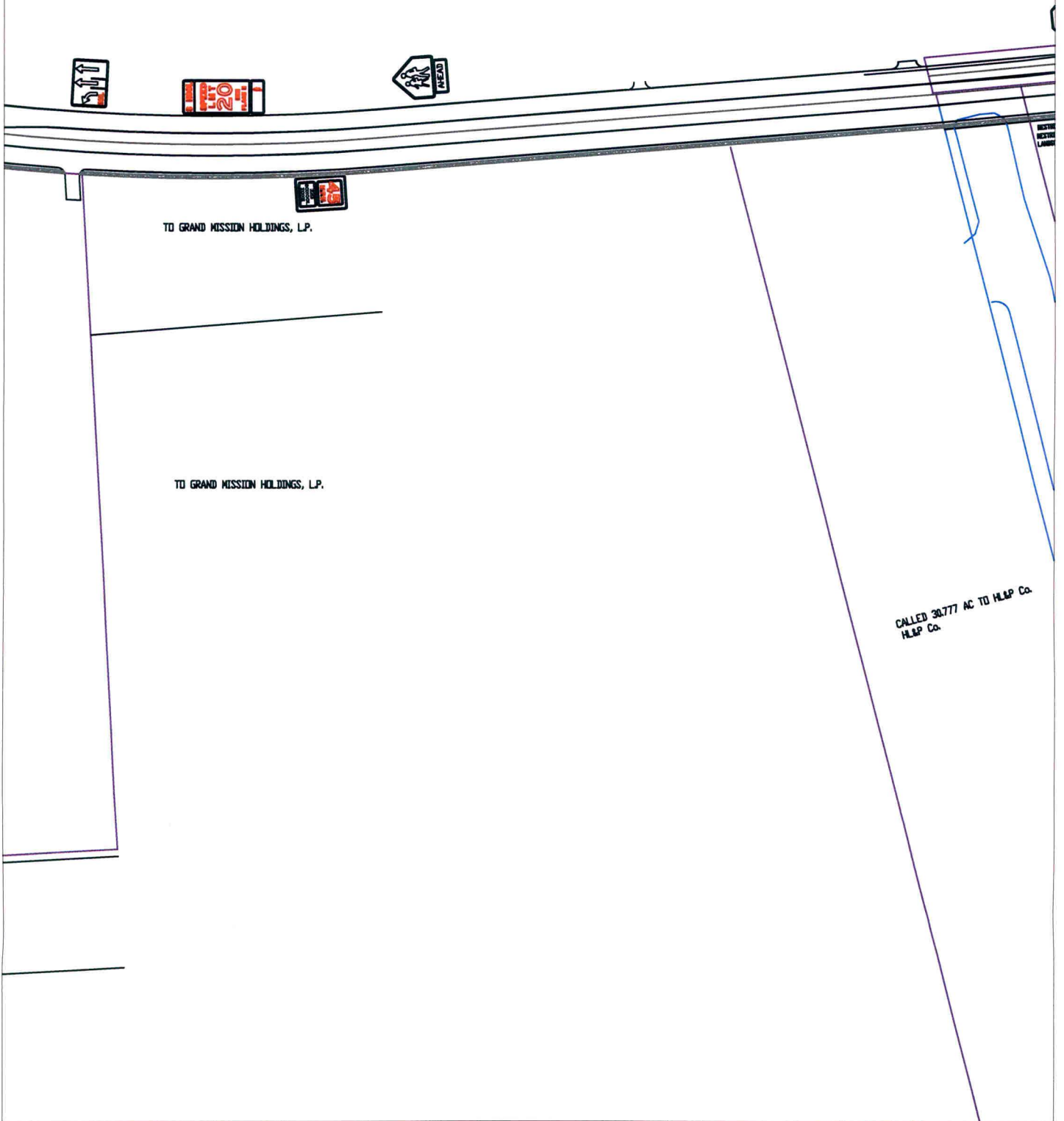
Date: 6-16-09

Scale

1" = 200'-0"

Grand Mission Boulevard from Longpoint Slough to Bradford Park, Section 1, Beechnut Street from Grand Mission Boulevard to FBISD Middle School #13 Control Map and Traffic Sign Layout

Fort Bend County Engineering Dept.
1124 Blume Road
Rosenberg, Texas 77471



Sheet 7 of 8

Note:

The purpose of this traffic control plan is to establish traffic control for the plat of Grand Mission Boulevard from Bellaire Boulevard to Dow Pipeline, including Beechnut Street from Grand Mission Boulevard to FBISD Middle School No. 13.

Drawn By: L. Brdecka

Date: 6-16-09

Approved By: Steven L. Evans

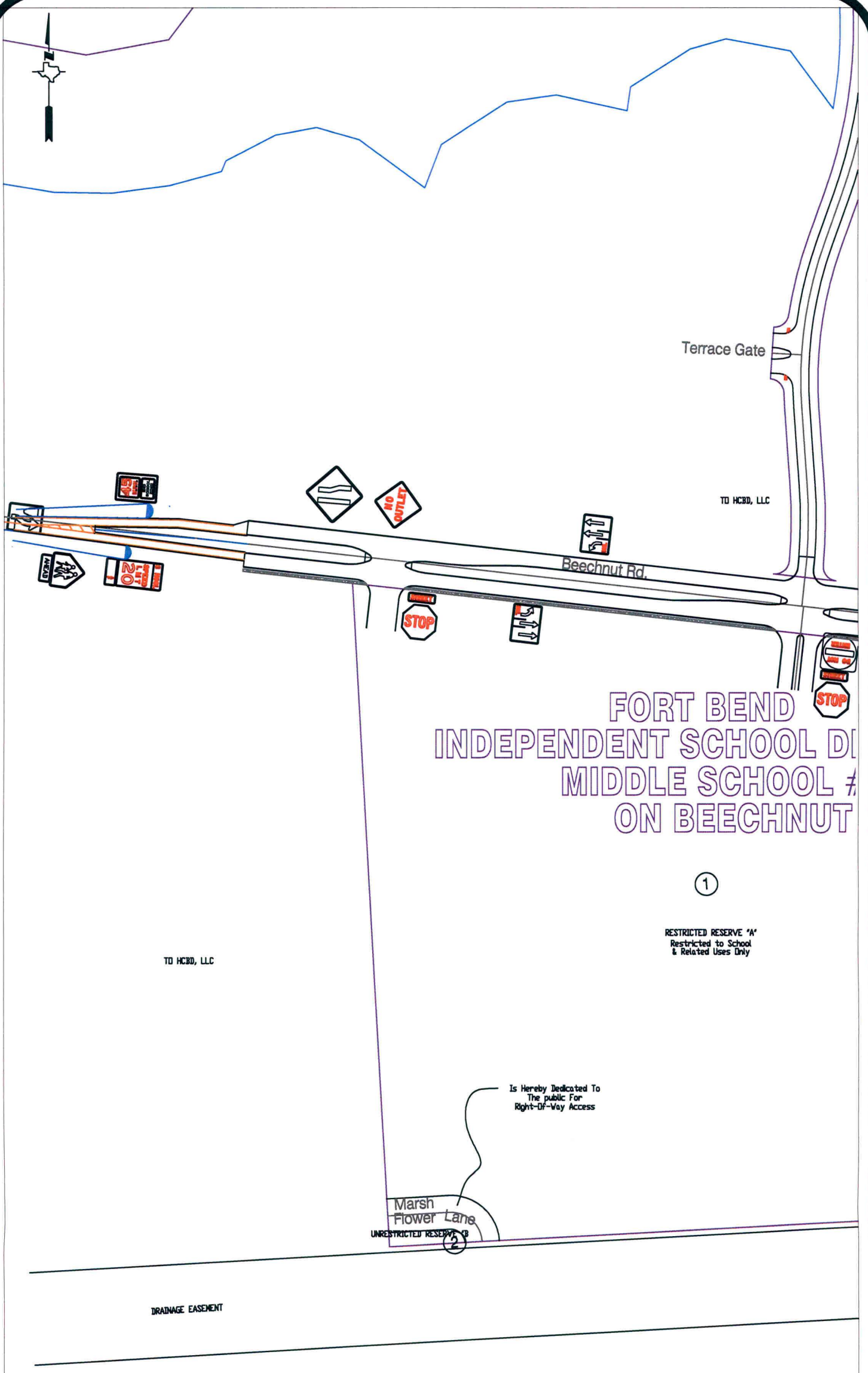
Date: 6-16-09

Scale

1" = 200'-0"

Grand Mission Boulevard from Longpoint Slough to Bradford Park, Section 1, Beechnut Street from Grand Mission Boulevard to FBISD Middle School #13 Control Map and Traffic Sign Layout

Fort Bend County Engineering Dept.
1124 Blume Road
Rosenberg, Texas 77471



FORT BEND
INDEPENDENT SCHOOL DISTRICT
MIDDLE SCHOOL #13
ON BEECHNUT

1

RESTRICTED RESERVE "A"
Restricted to School
& Related Uses Only

TO HCB, LLC

Is Hereby Dedicated To
The public For
Right-Of-Way Access

Marsh
Flower Lane
UNRESTRICTED RESERVE "B"

DRAINAGE EASEMENT

Note:
The purpose of this traffic control plan is to establish traffic control for the plat of Grand Mission Boulevard from Bellaire Boulevard to Dow Pipeline, including Beechnut Street from Grand Mission Boulevard to FBISD Middle School No. 13.

Drawn By: L. Brdecka
Date: 6-16-09
Approved By: Steven L. Evans
Date: 6-16-09
Scale
1" = 200'-0"

Grand Mission Boulevard from Longpoint Slough to Bradford Park, Section 1, Beechnut Street from Grand Mission Boulevard to FBISD Middle School #13 Control Map and Traffic Sign Layout
Fort Bend County Engineering Dept.
1124 Blume Road
Rosenberg, Texas 77471