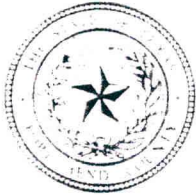


SBD



## FORT BEND COUNTY ENGINEERING

Fort Bend County, Texas

D. Jesse Hegemier  
County Engineer

June 11, 2009

Commissioner W. A. "Andy" Meyers  
Fort Bend County Precinct 3  
1809 Eldridge Road  
Sugar Land, Texas 77478

**RE: Lakes of Bella Terra, Section 1 - Traffic Control Plan**  
**Lakes of Bella Terra, Section 2**  
**Lakes of Bella Terra, Section 3**  
**Lakes of Bella Terra, Section 4**  
**Lakes of Bella Terra, Section 5**  
**Lakes of Bella Terra, Section 6**  
**Rancho Bella Parkway Extension from Bellaire Boulevard to Padova Drive STD**

Dear Commissioner:

Fort Bend County Engineering has completed and recommends approval of the traffic control plans for the above referenced subdivisions. The public hearing date for acceptance of the plans is scheduled for 7/7/2009.

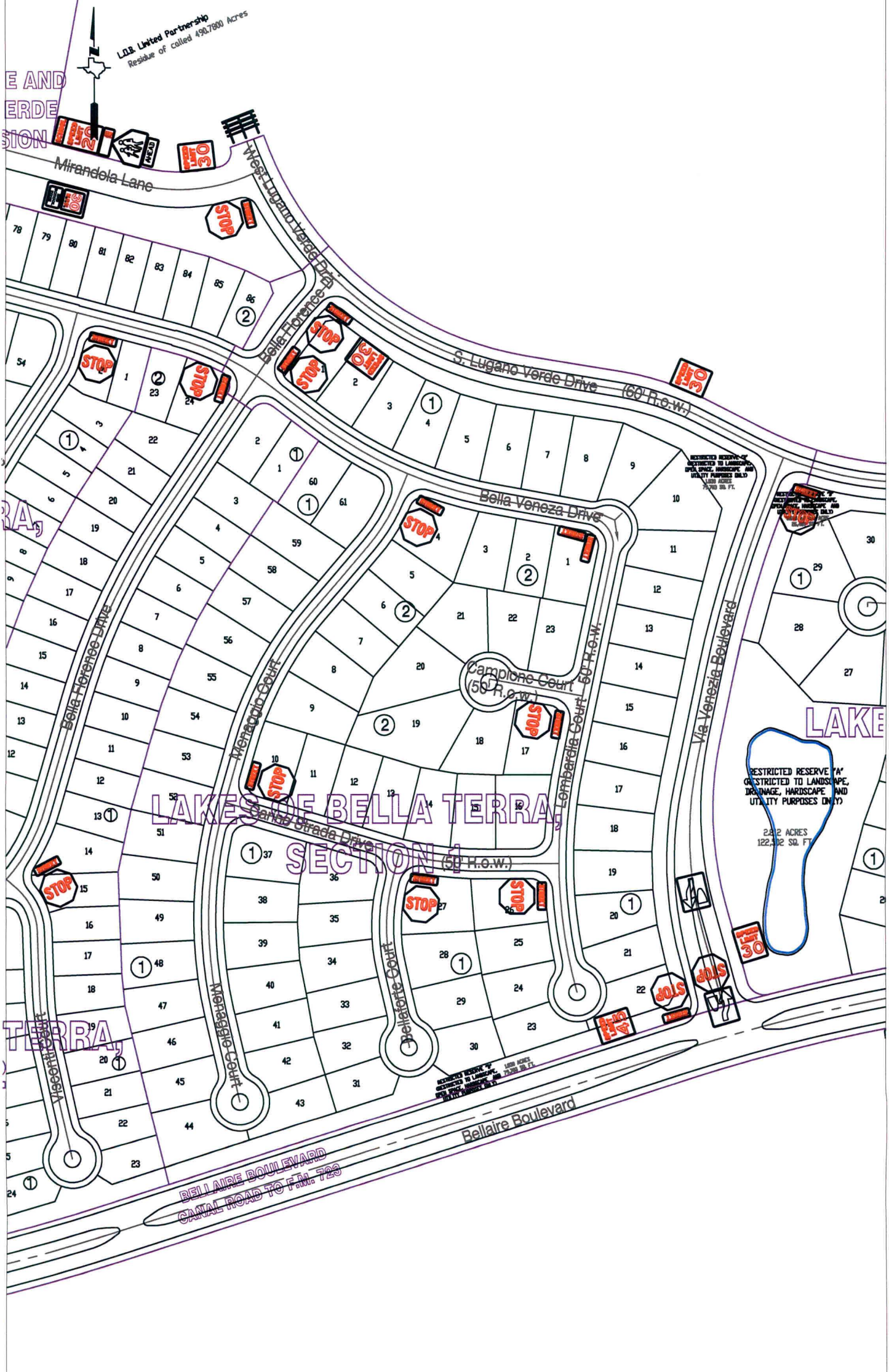
A copy of the traffic control plans are attached for your review. If you should have any questions, please give me a call.

Sincerely,

Steven L. Evans  
Assistant to County Engineer

SLE/mjs

cc: Judge Robert E. Hebert, County Judge  
Marc Grant - FBC Road & Bridge  
Marc Grant - Signage Department  
File



**Note:**

The purpose of this traffic control plan is to establish traffic control for Lakes of Bella Terra, Section 1.

Drawn By: L. Brdecka

Date: 6-8-09

Approved By: Steven L. Evans

Date: 6-8-09

Scale

1" = 200'-0"

**Lakes of Bella Terra, Section 1  
Control Map and  
Traffic Sign Layout**

Fort Bend County Engineering Dept.  
1124 Blume Road  
Rosenberg, Texas 77471



L.D.B. Limited Partnership  
Residue of called 490.7800 Acres

# MIRANDOLA LANE AND WEST LUGANO VERDE DRIVE SUBDIVISION

# LAKES OF BELLA TERRA, SECTION 3

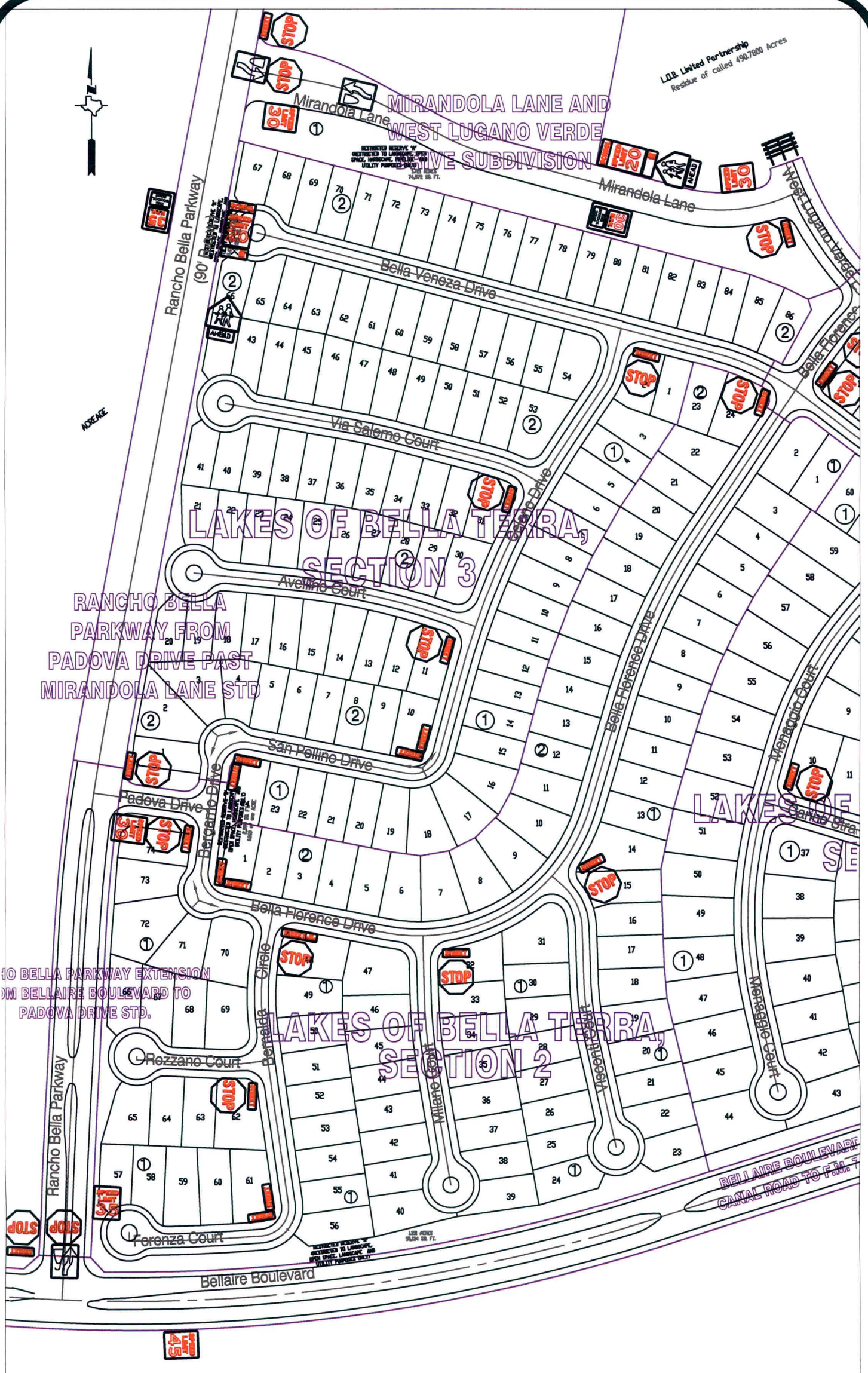
# LAKES OF BELLA TERRA, SECTION 4

# LAKES OF BELLA TERRA, SECTION 2

RANCHO BELLA PARKWAY FROM PADOVA DRIVE PAST MIRANDOLA LANE STD

10 BELLA PARKWAY EXTENSION FROM BELLAIRE BOULEVARD TO PADOVA DRIVE STD.

BELLAIRE BOULEVARD CANAL ROAD TO F.M. 5



**Note:**

The purpose of this traffic control plan is to establish traffic control for Lakes of Bella Terra, Section 2.

Drawn By: L. Brdecka

Date: 6-8-09

Approved By: Steven L. Evans

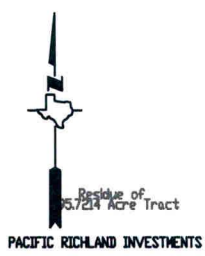
Date: 6-8-09

Scale

1" = 200'-0"

## Lakes of Bella Terra, Section 2 Control Map and Traffic Sign Layout

Fort Bend County Engineering Dept.  
1124 Blume Road  
Rosenberg, Texas 77471

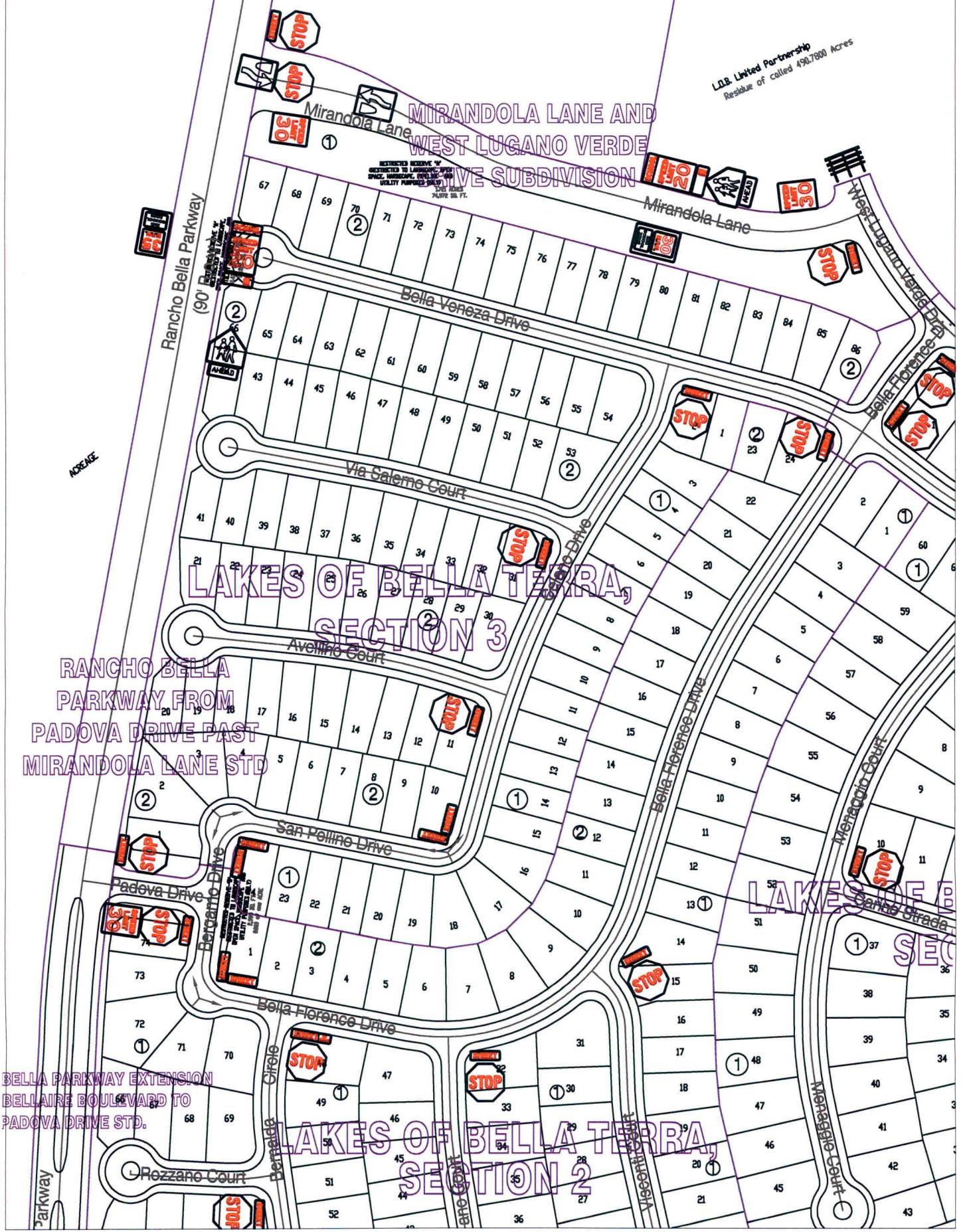


①  
 RESTRICTED RESERVE "A"  
 (RESTRICTED TO SCHOOL USE ONLY)  
 13.00 Acres  
 566,261 SQ. FT.

# LAMAR CISD ELEMENTARY SCHOOL NO 21 (Joe Hubenak Elementary)

L.D.B. LIMITED PARTNERSHIP  
 RESERVE CALLED 490,780 ACRES

L.D.B. Limited Partnership  
 Residue of called 490,780 Acres



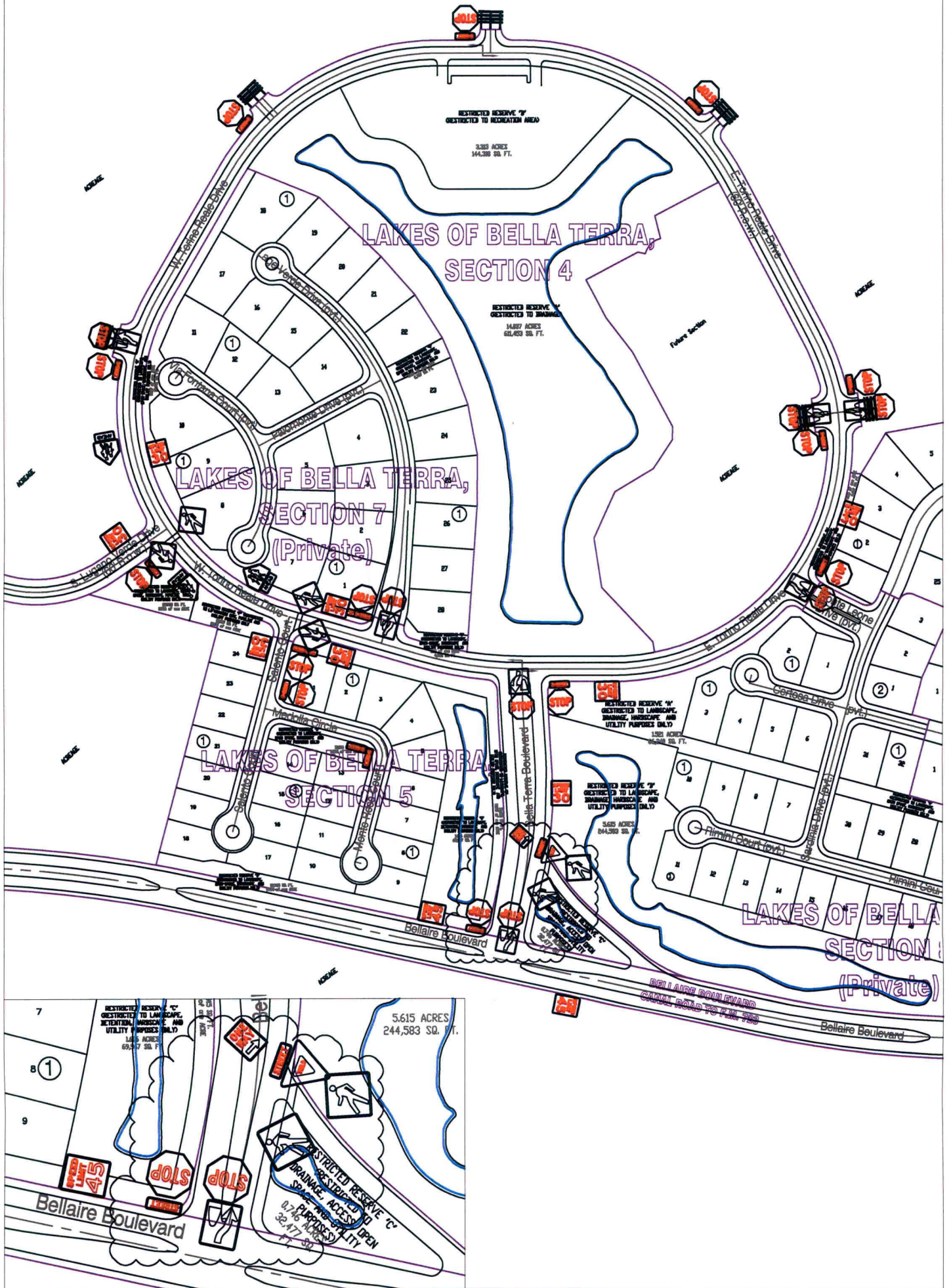
RANCHO BELLA  
 PARKWAY FROM  
 PADOVA DRIVE PAST  
 MIRANDOLA LANE STD

BELLA PARKWAY EXTENSION  
 BELLAIRE BOULEVARD TO  
 PADOVA DRIVE STD.

**Note:**  
 The purpose of this traffic control plan is to establish traffic control for Lakes of Bella Terra, Section 3.

Drawn By: L. Brdecka  
 Date: 6-8-09  
 Approved By: Steven L. Evans  
 8: 6-8-09  
 Scale  
 1" = 200'-0"

Lakes of Bella Terra, Section 3  
 Control Map and Traffic Sign  
 Layout  
 Fort Bend County Engineering Dept.  
 1124 Blume Road  
 Rosenberg, Texas 77471



**Note:**

The purpose of this traffic control plan is to establish traffic control for Lakes of Bella Terra, Section 4.

Drawn By: L. Brdecka

Date: 6-8-09

Approved By: Steven L. Evans

Date: 6-8-09

Scale

1" = 300'-0"

**Lakes of Bella Terra, Section 4  
Control Map and  
Traffic Sign Layout**

Fort Bend County Engineering Dept.  
1124 Blume Road  
Rosenberg, Texas 77471

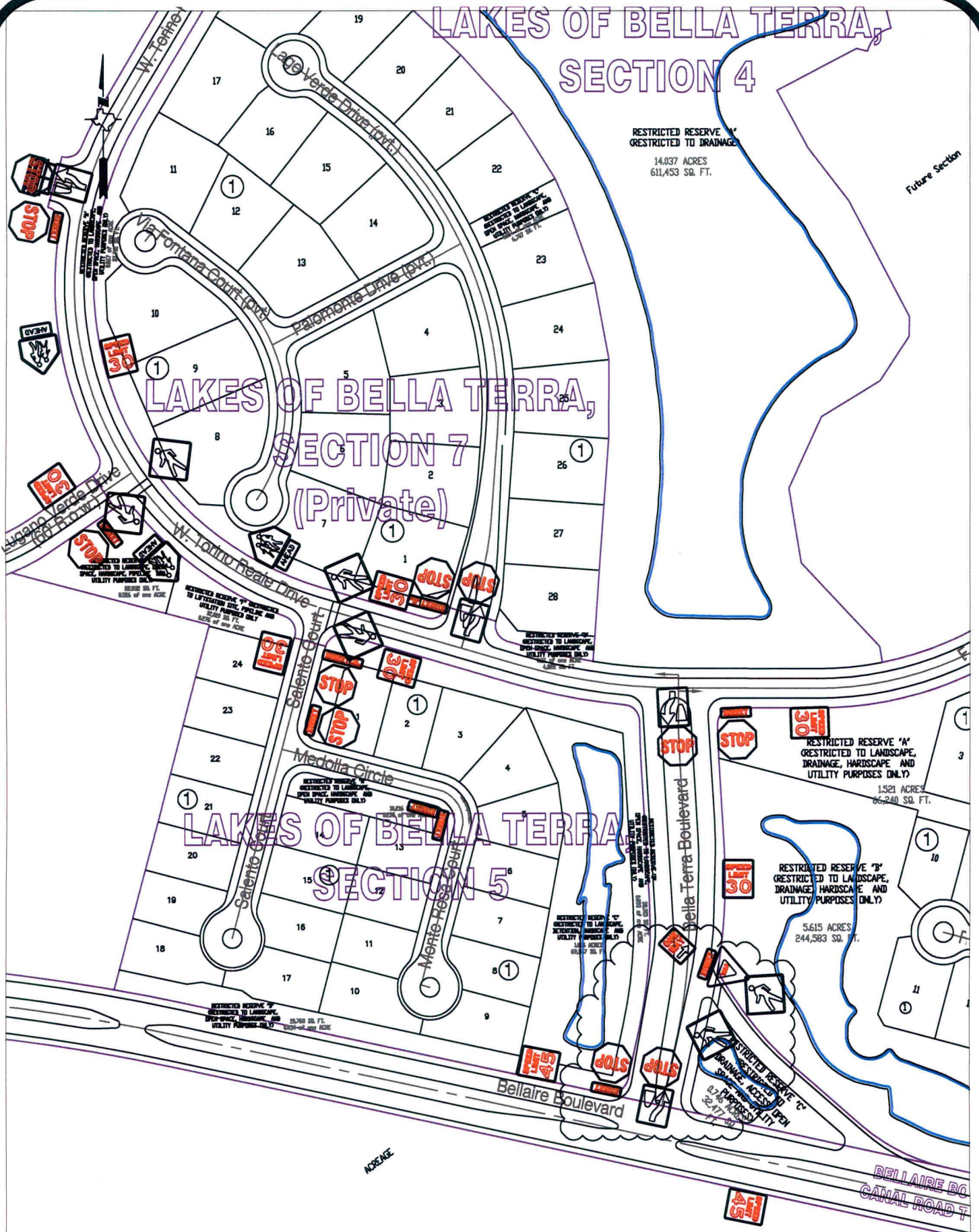
# LAGES OF BELLA TERRA, SECTION 4

RESTRICTED RESERVE "K"  
RESTRICTED TO DRAINAGE  
14.037 ACRES  
611,453 SQ. FT.

Future Section

# LAGES OF BELLA TERRA, SECTION 7 (Private)

# LAGES OF BELLA TERRA SECTION 5



**Note:**

The purpose of this traffic control plan is to establish traffic control for Lakes of Bella Terra, Section 5.

Drawn By: L. Brdecka

Date: 6-8-09

Approved By: Steven L. Evans

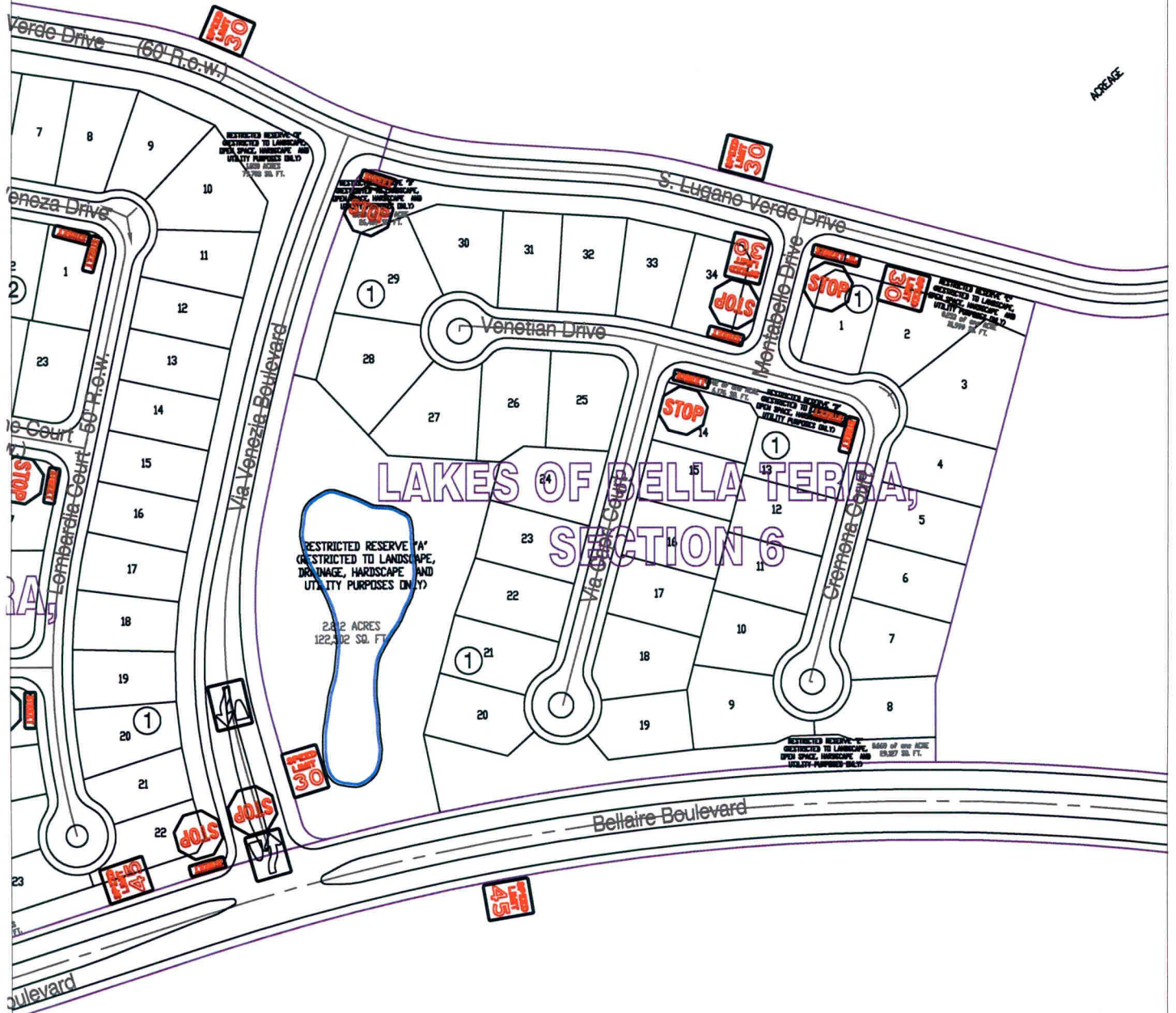
Date: 6-8-09

Scale

1" = 200'-0"

## Lakes of Bella Terra, Section 5 Control Map and Traffic Sign Layout

Fort Bend County Engineering Dept.  
1124 Blume Road  
Rosenberg, Texas 77471



**Note:**

The purpose of this traffic control plan is to establish traffic control for Lakes of Bella Terra, Section 6.

Drawn By: L. Brdecka

Date: 6-8-09

Approved By: Steven L. Evans

Date: 6-8-09

Scale

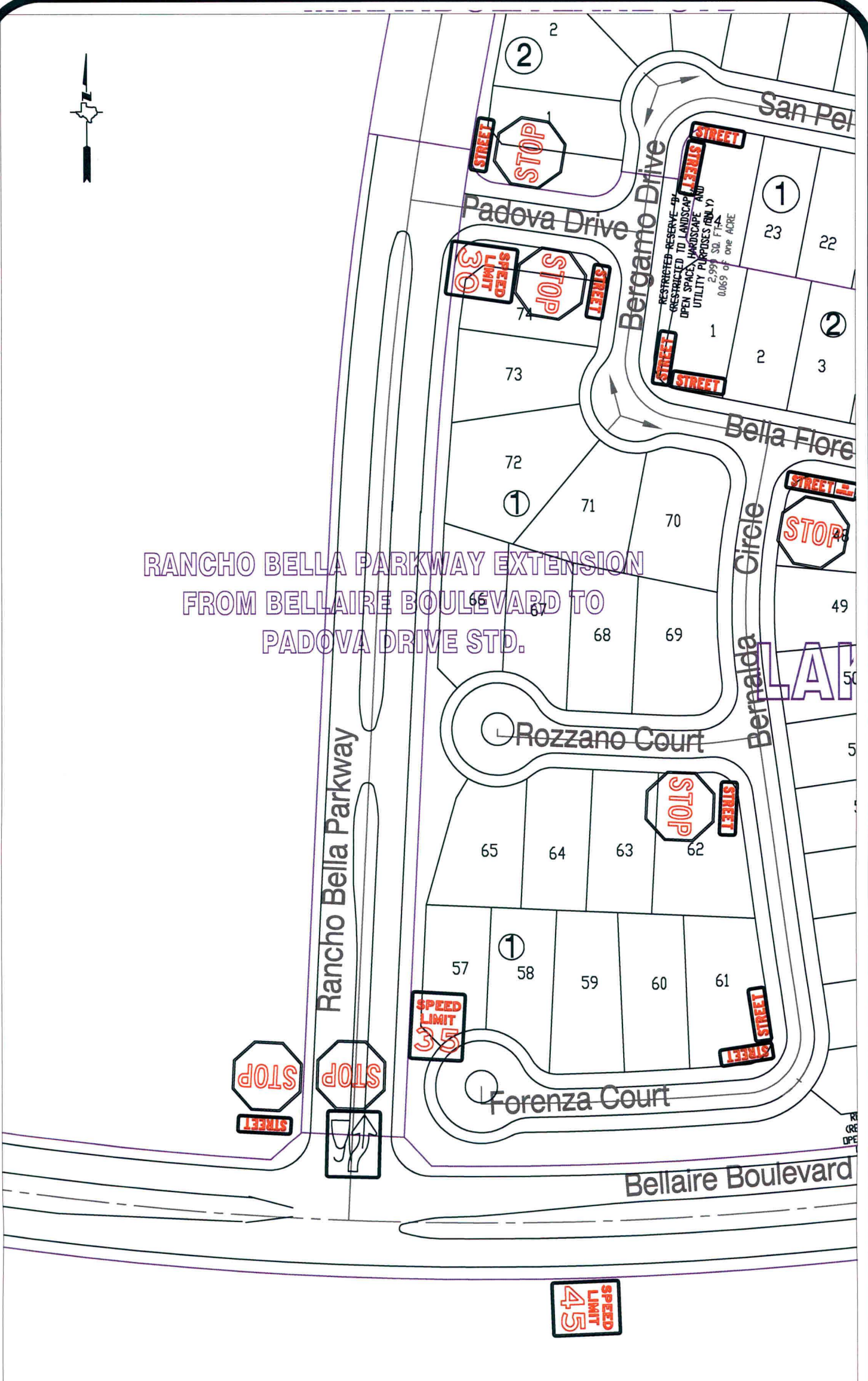
1" = 200'-0"

**Lakes of Bella Terra, Section 6  
Control Map and  
Traffic Sign Layout**

Fort Bend County Engineering Dept.  
1124 Blume Road  
Rosenberg, Texas 77471



RANCHO BELLA PARKWAY EXTENSION  
FROM BELLAIRE BOULEVARD TO  
PADOVA DRIVE STD.



**Note:**

The purpose of this traffic control plan is to establish traffic control for Rancho Bella Parkway Extension from Bellaire Boulevard to Padova Drive STD.

Drawn By: L. Brdecka

Date: 6-8-09

Approved By: Steven L. Evans

Date: 6-8-09

Scale

1" = 200'-0"

Rancho Bella Parkway Extension from Bellaire Boulevard to Padova Drive STD Control Map and Traffic Sign Layout

Fort Bend County Engineering Dept.  
1124 Blume Road  
Rosenberg, Texas 77471