

5B-B



## FORT BEND COUNTY ENGINEERING

Fort Bend County, Texas

D. Jesse Hegemier  
County Engineer

June 11, 2009

Commissioner W. A. "Andy" Meyers  
Fort Bend County Precinct 3  
1809 Eldridge Road  
Sugar Land, Texas 77478

**RE: Bellaire Boulevard eastbound lanes from Canal Road to Grand Parkway (plat:  
Westpark Lakes)- Traffic Control Plan**

Dear Commissioner:

Fort Bend County Engineering has completed and recommends approval of the traffic control plan for the above referenced subdivision. The public hearing date for acceptance of the plan is scheduled for 7/7/2009.

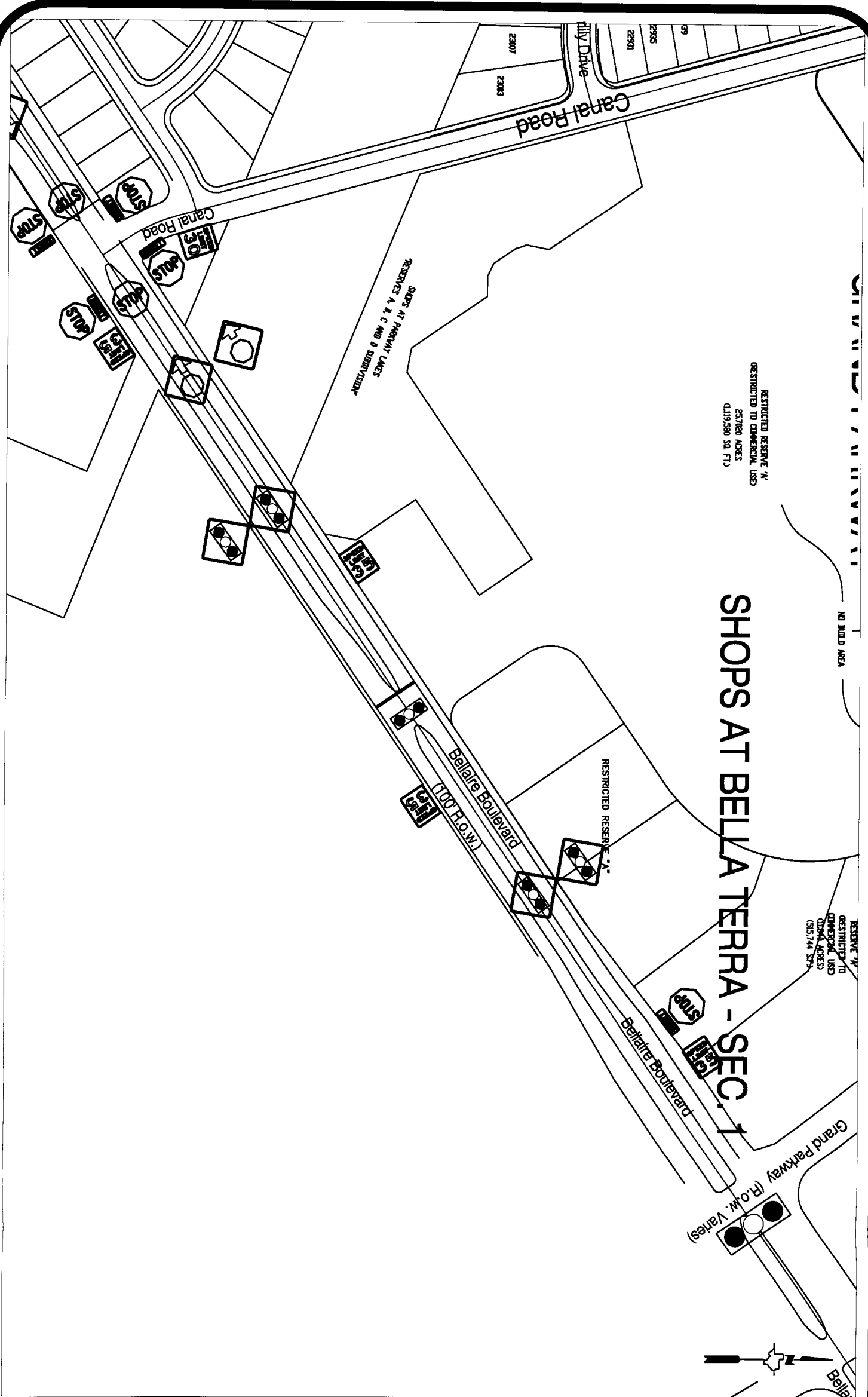
A copy of the traffic control plan is attached for your review. If you should have any questions, please give me a call.

Sincerely,

Steven L. Evans  
Assistant to County Engineer

SLE/mjs

cc: Judge Robert E. Hebert, County Judge  
Marc Grant - FBC Road & Bridge  
Marc Grant - Signage Department  
File



**Note:**

The purpose of this traffic control plan is to establish traffic control for Bellaire Boulevard eastbound lanes from Canal Road to Grand Parkway (plat: Westpark Lakes).

Drawn By: L. Brdecka
Date: 6-11-09
Approved By: Steven L. Evans
Date: 6-11-09
Scale
1" = 200'-0"

Bellaire Boulevard eastbound lanes from Canal Road to Grand Parkway Control Map and Traffic Sign Layout  
 Fort Bend County Engineering Dept.  
 1124 Blume Road  
 Rosenberg, Texas 77471