**FORT BEND COUNTY ENGINEERING**

Fort Bend County, Texas

D. Jesse Hegemier  
County Engineer

June 22, 2009

Commissioner W. A. "Andy" Meyers  
Fort Bend County Precinct 3  
1809 Eldridge Road  
Sugar Land, Texas 77478

**RE: Gaston Road STD from Willowleaf Garden Crossing to Legendary Lane  
Traffic Control Plan**

Dear Commissioner:

Fort Bend County Engineering has completed and recommends approval of the traffic control plan for the above referenced subdivision. The public hearing date for acceptance of the plan is being scheduled.

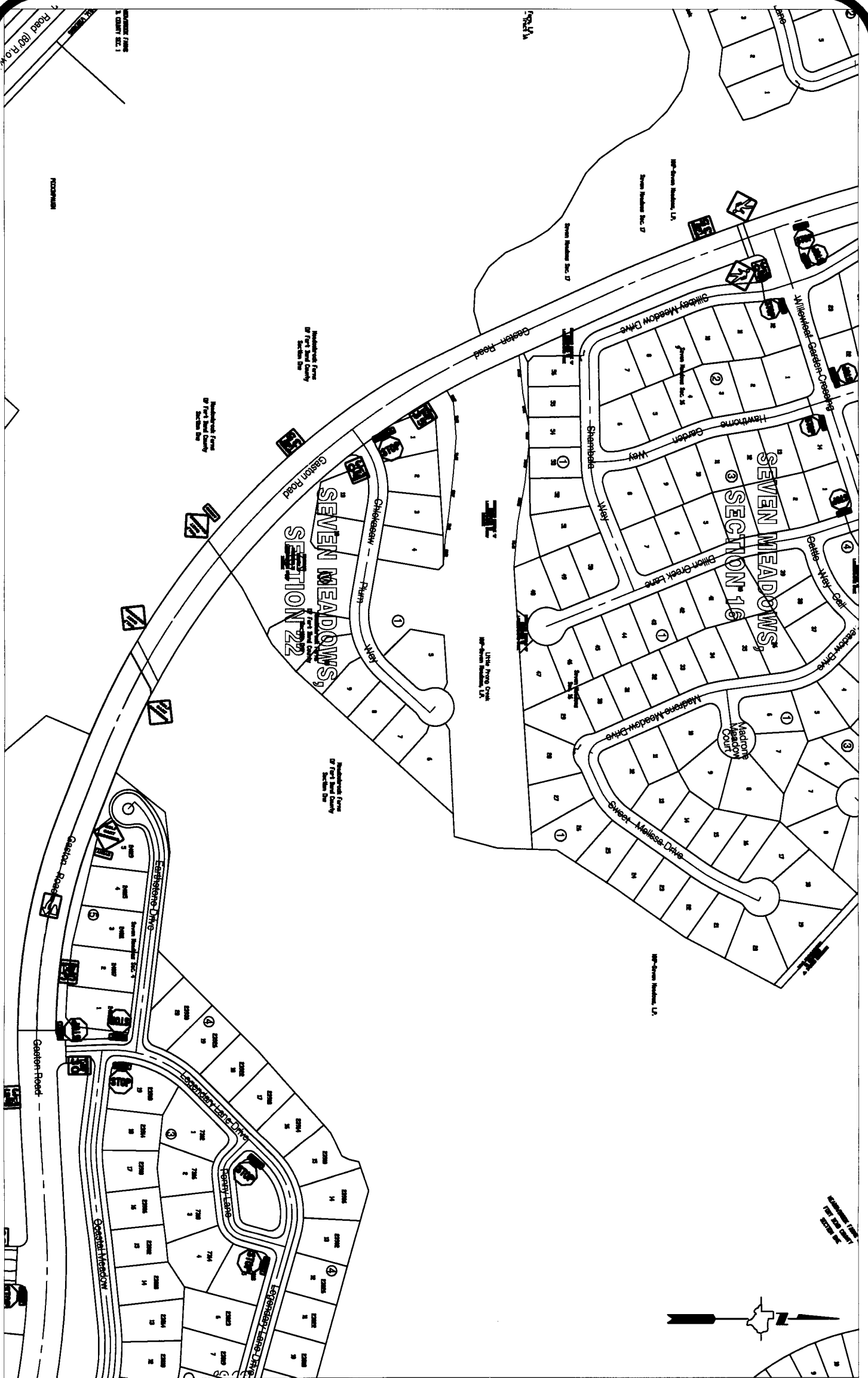
A copy of the traffic control plan is attached for your review. If you should have any questions, please give me a call.

Sincerely,

Steven L. Evans  
Assistant to County Engineer

SLE/mjs

cc: Judge Robert E. Hebert, County Judge  
Marc Grant - FBC Road & Bridge  
Marc Grant - Signage Department  
File



**Note:**

The purpose of this traffic control plan is to establish traffic control for Gaston Road STD from Willowleaf Garden Crossing to Legendary Lane.

Drawn By: L. Brdecka

Date: 6-18-09

Approved By: Nathan Hatcher

Date: 6-18-09

Scale

1" = 300'-0"

Gaston Road STD from  
Willowleaf Garden Crossing to Legendary Lane  
Control Map and  
Traffic Sign Layout

Fort Bend County Engineering Dept.  
1124 Blume Road  
Rosenberg, Texas 77471

**FORT BEND COUNTY ENGINEERING**

Fort Bend County, Texas

D. Jesse Hegemier  
County Engineer

June 8, 2009

Commissioner W. A. "Andy" Meyers  
Fort Bend County Precinct 3  
1809 Eldridge Road  
Sugar Land, Texas 77478

**RE: Seven Meadows, Section 22 -Traffic Control Plan**

Dear Commissioner:

Fort Bend County Engineering has completed and recommends approval of the traffic control plan for the above referenced subdivision. The public hearing date for acceptance of the plan is being scheduled.

A copy of the traffic control plan is attached for your review. If you should have any questions, please give me a call.

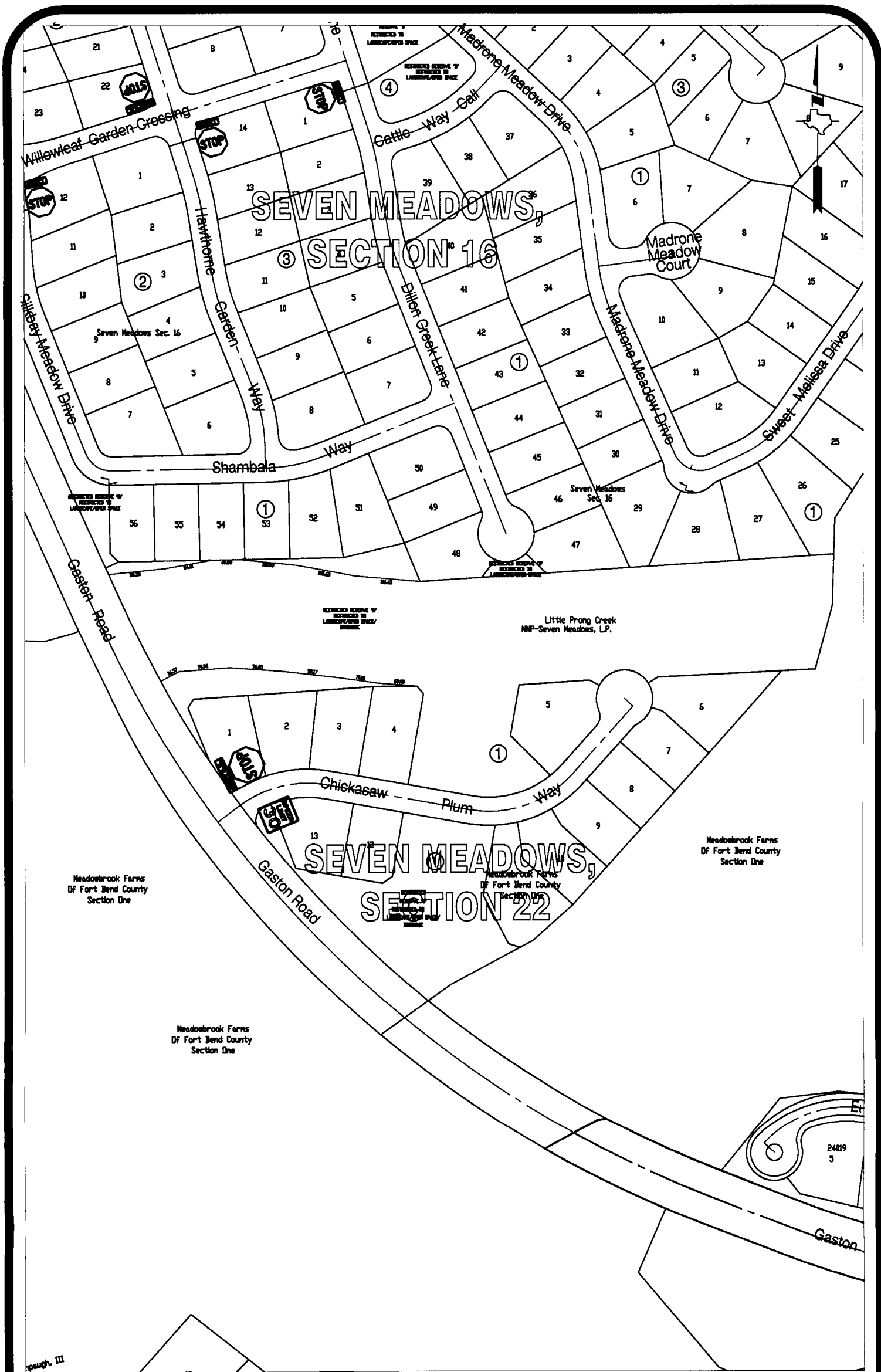
Sincerely,



Steven L. Evans  
Assistant to County Engineer

SLE/mjs

cc: Judge Robert E. Hebert, County Judge  
Marc Grant - FBC Road & Bridge  
Marc Grant - Signage Department  
File



**Note:**

The purpose of this traffic control plan is to establish traffic control for Seven Meadows, Section 22.

Drawn By: L. Brdecka

Date: 6-3-09

Approved By: Steven L. Evans

Date: 6-3-09

Scale

1" = 200'-0"

**Seven Meadows, Section 22  
Control Map and  
Traffic Sign Layout**

Fort Bend County Engineering Dept.  
1124 Blume Road  
Rosenberg, Texas 77471

Spaugh, III