



FORT BEND COUNTY ENGINEERING

Fort Bend County, Texas

D. Jesse Hegemier
County Engineer

August 13, 2008

Commissioner James Patterson
Fort Bend County Precinct 4
12919 Dairy Ashford Road
Sugar Land, Texas 77478

**RE: Creekstone Village at Riverstone, Section 1 - Traffic Control Plan
Creekstone Village at Riverstone, Section 2
Creekstone Village at Riverstone, Section 3
Creekstone Village at Riverstone, Section 4
The Crossing at Riverstone, Section 2
The Crossing at Riverstone, Section 3
Crossing Cove at Riverstone
Brookside at Riverstone**

Dear Commissioner:

Fort Bend County Engineering has completed and recommends approval of the traffic control plans for the above referenced subdivisions. The public hearing date for acceptance of the plans is being scheduled.

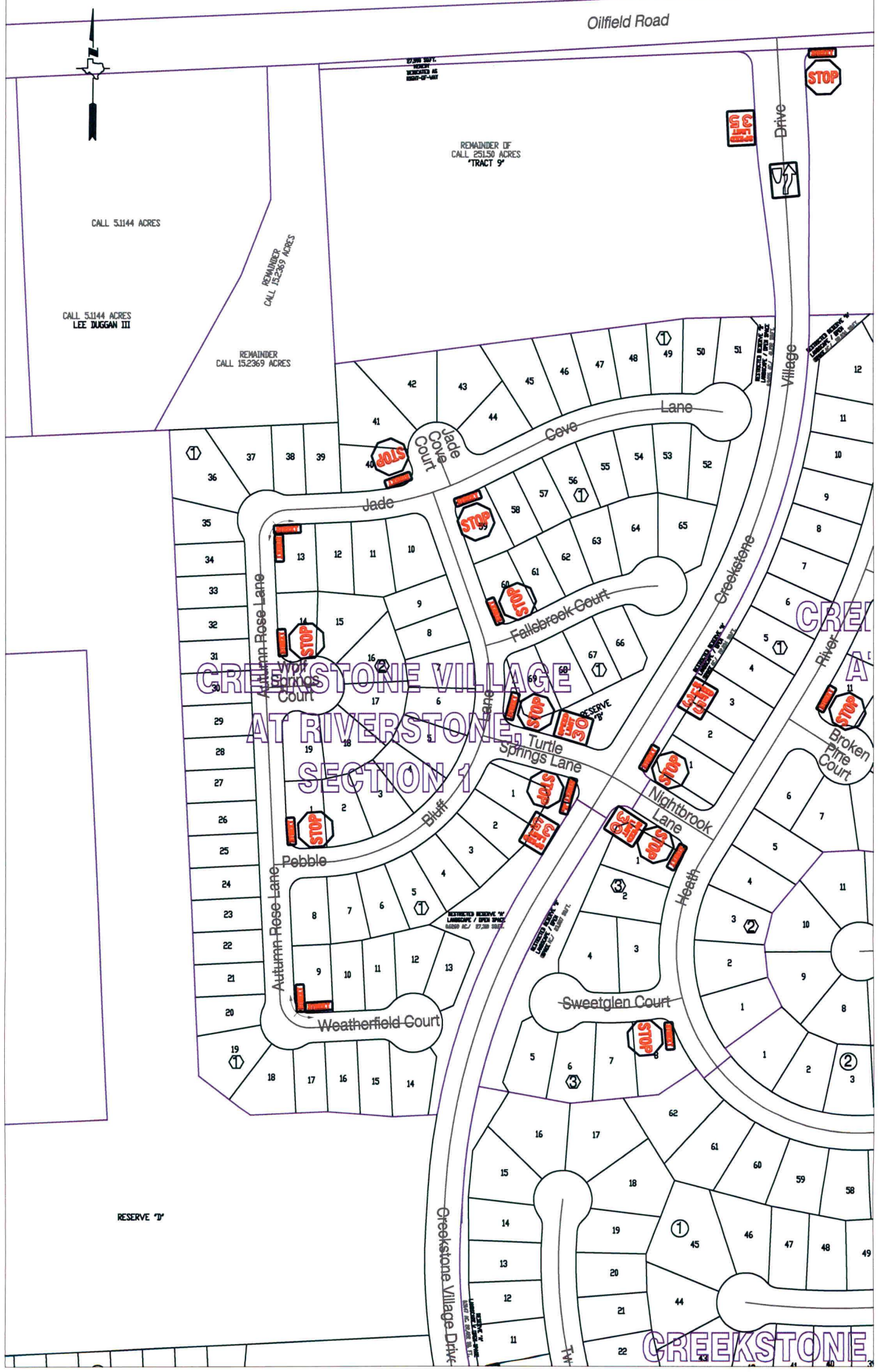
A copy of the traffic control plan is attached for your review. If you should have any questions, please give me a call.

Sincerely,

Nathan D. Hatcher
Assistant to County Engineer

NDH/mjs

cc: Judge Robert E. Hebert, County Judge
Marc Grant - FBC Road & Bridge
Marc Grant - Signage Department
File



CREEKSTONE VILLAGE
AT RIVERSTONE,
SECTION 1

CREEKSTONE

Note:

The purpose of this traffic control plan is to establish traffic control for Creekstone Village at Riverstone, Section 1.

Drawn By: L. Brdecka
Date: 6-2-09
Approved By: Nathan Hatcher
Date: 6-2-09
Scale
1" = 200'-0"

**Creekstone Village at Riverstone,
Section 1
Control Map and Traffic Sign Layout**

Fort Bend County Engineering Dept.
1124 Blume Road
Rosenberg, Texas 77471



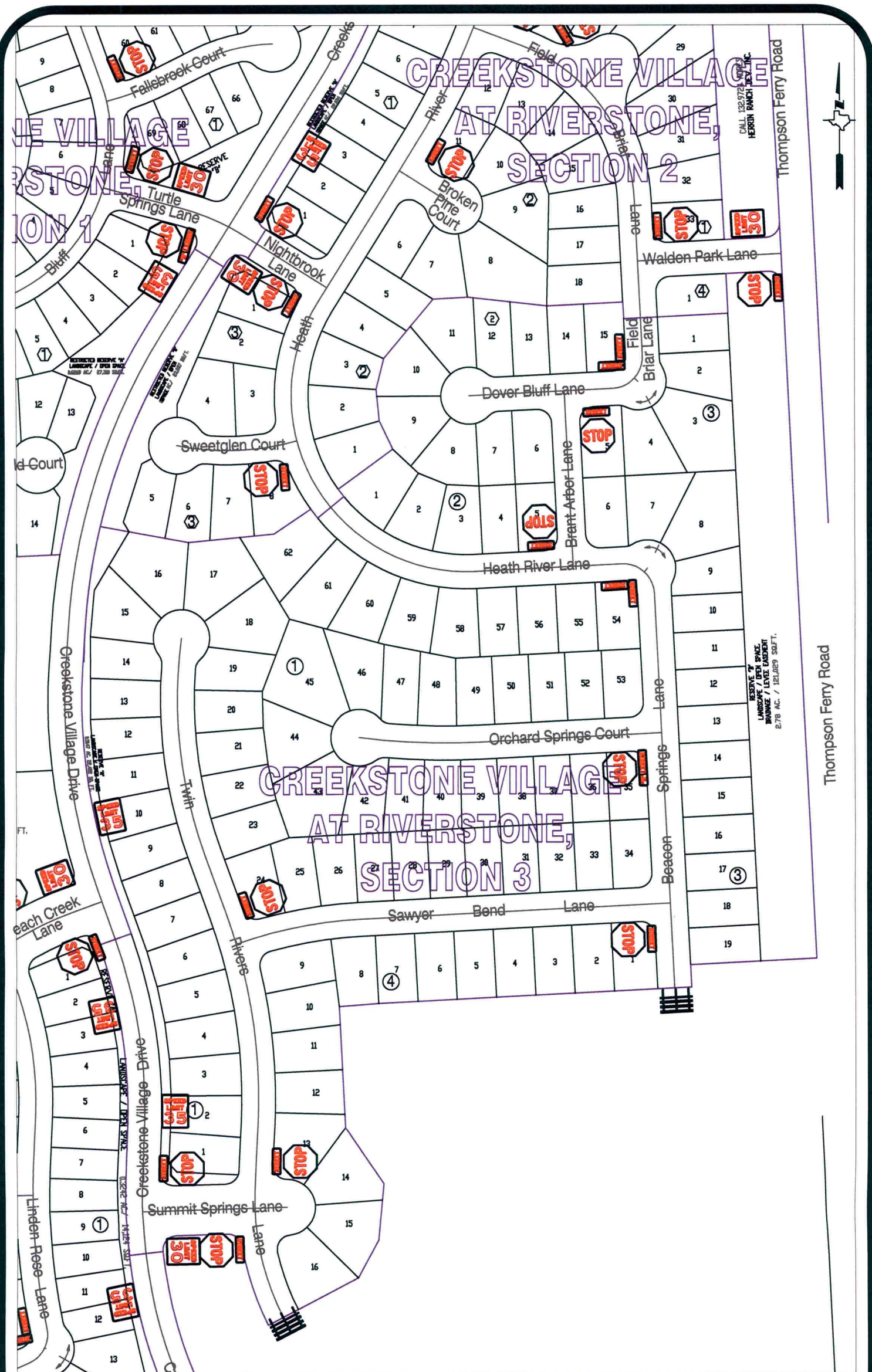
Note:
 The purpose of this traffic control plan is to establish traffic control for Creekstone Village at Riverstone, Section 2.

Drawn By: L. Brdecka
 Date: 6-2-09
 Approved By: Nathan Hatcher
 Date: 6-2-09
 Scale
 1" = 200'-0"

Creekstone Village at Riverstone, Section 2
Control Map and Traffic Sign Layout
 Fort Bend County Engineering Dept.
 1124 Blume Road
 Rosenberg, Texas 77471

CREEKSTONE VILLAGE
AT RIVERSTONE,
SECTION 2

CREEKSTONE VILLAGE
AT RIVERSTONE,
SECTION 3



CALL 1229726
HERBIN RANCH NEW, L.P.

RESERVE 7'
LANDSCAPE / OPEN SPACE
PAVING / LEVEL EASEMENT
2.78 AC. / 121,069 S.F.T.

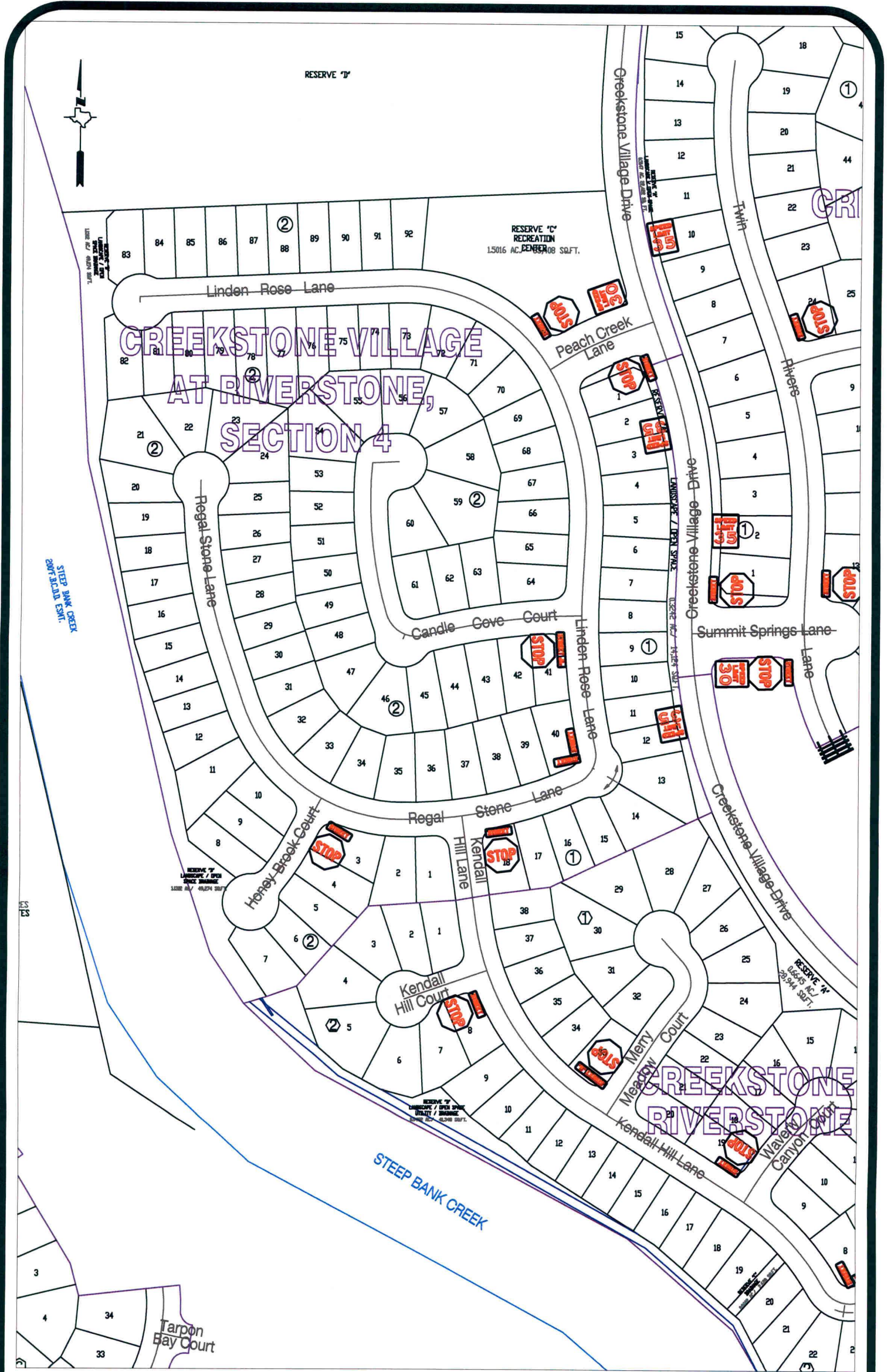
Note:

The purpose of this traffic control plan is to establish traffic control for Creekstone Village at Riverstone, Section 3.

Drawn By: L. Brdecka
Date: 6-2-09
Approved By: Nathan Hatcher
Date: 6-2-09
Scale
1" = 200'-0"

**Creekstone Village at Riverstone,
Section 3
Control Map and Traffic Sign Layout**

Fort Bend County Engineering Dept.
1124 Blume Road
Rosenberg, Texas 77471



**CREEKSTONE VILLAGE
AT RIVERSTONE,
SECTION 4**

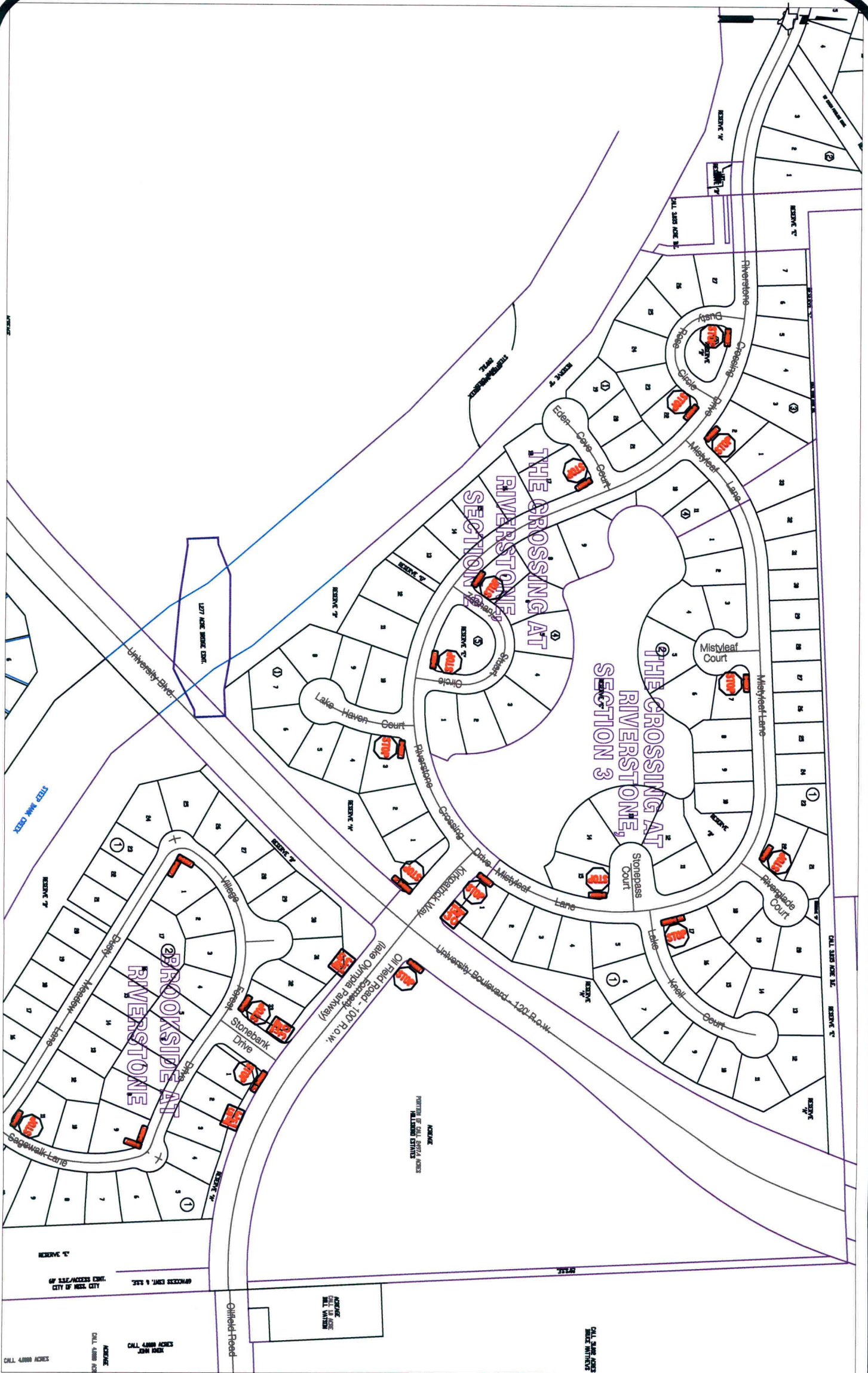
**CREEKSTONE
RIVERSTONE**

Note:
The purpose of this traffic control plan is to establish traffic control for Creekstone Village at Riverstone, Section 4.

Drawn By: L. Brdecka
Date: 6-2-09
Approved By: Nathan Hatcher
Date: 6-2-09
Scale
1" = 200'-0"

**Creekstone Village at Riverstone,
Section 4
Control Map and Traffic Sign Layout**

Fort Bend County Engineering Dept.
1124 Blume Road
Rosenberg, Texas 77471



Note:

The purpose of this traffic control plan is to establish traffic control for Crossing at Riverstone, Section 2.

Drawn By: L. Brdecka

Date: 6-2-09

Approved By: Nathan Hatcher

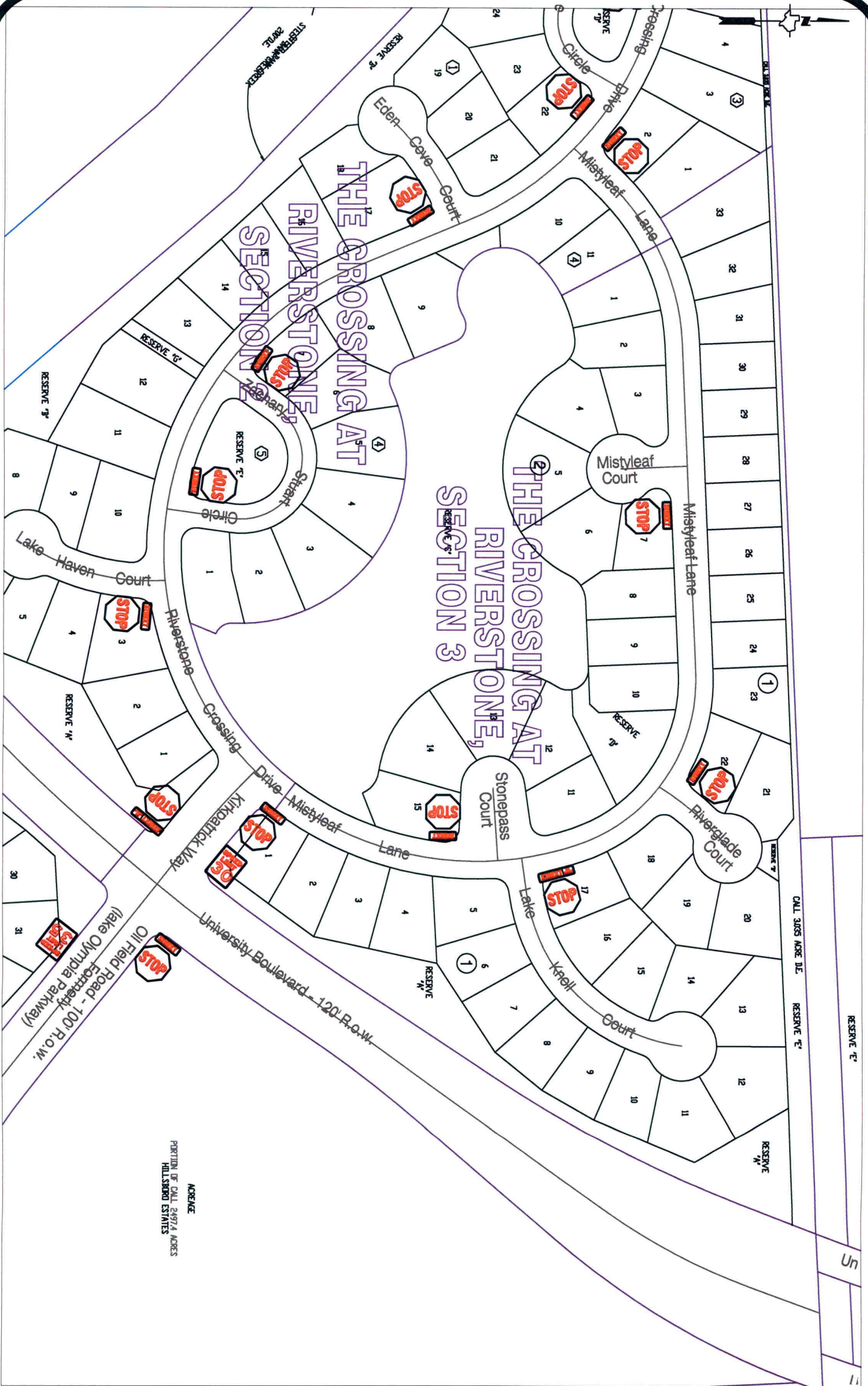
Date: 6-2-09

Scale

1" = 300'-0"

**Crossing at Riverstone,
Section 2
Control Map and Traffic Sign Layout**

Fort Bend County Engineering Dept.
1124 Blume Road
Rosenberg, Texas 77471



ACREAGE
 PARTIAL OF CALL 24974 ACRES
 HILLSBORO ESTIMATES

Note:

The purpose of this traffic control plan is to establish traffic control for Crossing at Riverstone, Section 3.

Drawn By: L. Brdecka
 Date: 6-2-09
 Approved By: Nathan Hatcher
 Date: 6-2-09
 Scale
 1" = 200'-0"

**Crossing at Riverstone,
 Section 3
 Control Map and Traffic Sign Layout**

Fort Bend County Engineering Dept.
 1124 Blume Road
 Rosenberg, Texas 77471



Note:

The purpose of this traffic control plan is to establish traffic control for Crossing Cove at Riverstone.

Drawn By: L. Brdecka
 Date: 6-2-09
 Approved By: Nathan Hatcher
 Date: 6-2-09
 Scale
 1" = 200'-0"

**Crossing Cove at Riverstone
 Control Map and
 Traffic Sign Layout**

Fort Bend County Engineering Dept.
 1124 Blume Road
 Rosenberg, Texas 77471



CALL 60.8592 ACRES
FIRST COLONY LEVEE IMPROVEMENT DISTRICT



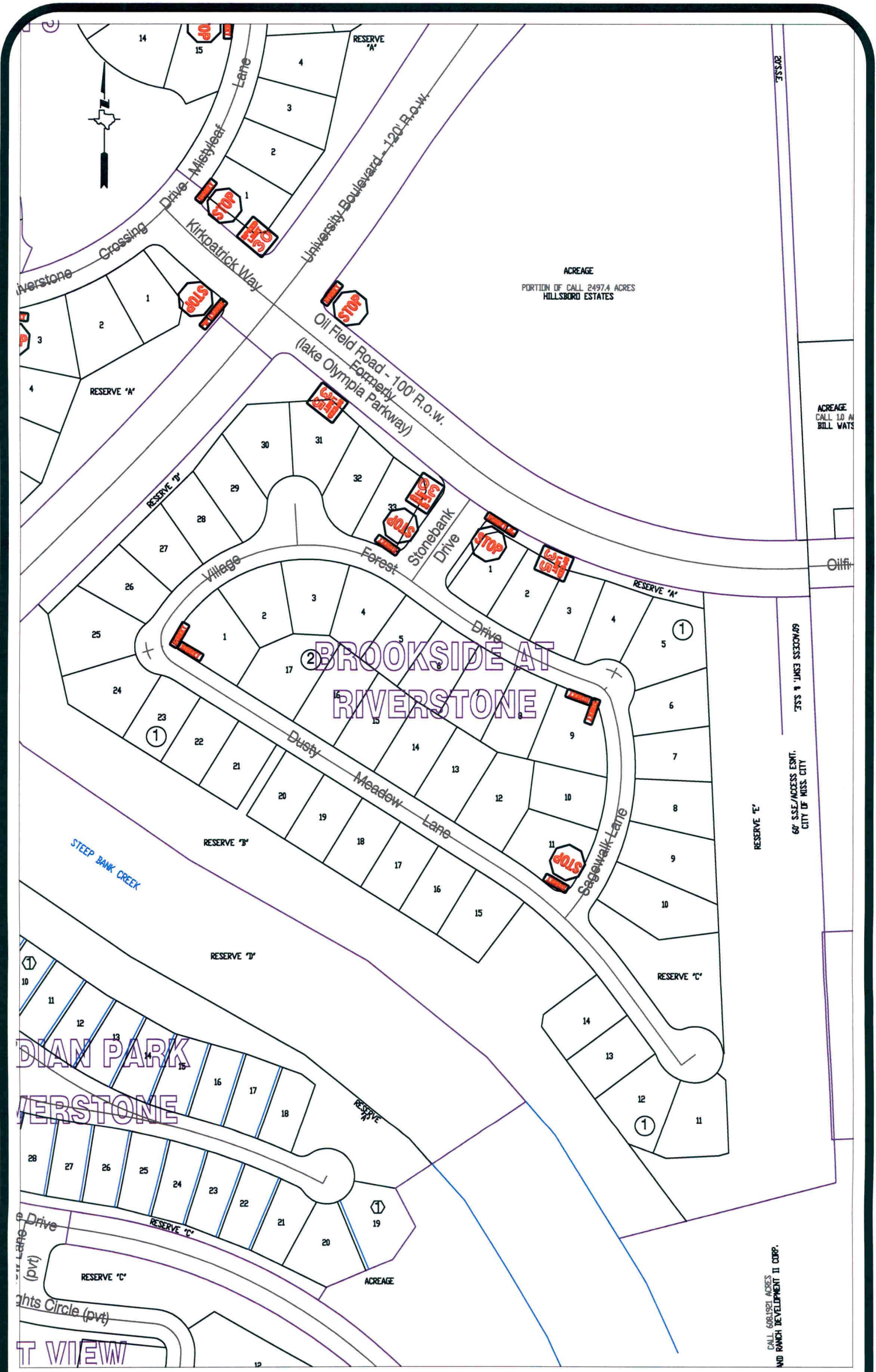
Note:

The purpose of this traffic control plan is to establish traffic control for Crossing Cove at Riverstone, Section 2.

Drawn By: L. Brdecka
 Date: 6-2-09
 Approved By: Nathan Hatcher
 Date: 6-2-09
 Scale
 1" = 200'-0"

**Crossing Cove at Riverstone,
 Section 2
 Control Map and Traffic Sign Layout**

Fort Bend County Engineering Dept.
 1124 Blume Road
 Rosenberg, Texas 77471



BROOKSIDE AT RIVERSTONE

**DIAN PARK
RIVERSTONE**

T VIEW

Note:

The purpose of this traffic control plan is to establish traffic control for Brookside at Riverstone.

Drawn By: L. Brdecka
 Date: 6-2-09
 Approved By: Nathan Hatcher
 Date: 6-2-09
 Scale
 1" = 200'-0"

**Brookside at Riverstone
 Control Map and
 Traffic Sign Layout**

Fort Bend County Engineering Dept.
 1124 Blume Road
 Rosenberg, Texas 77471

CALL 6081921 ACRES
 AND RANCH DEVELOPMENT II CORP.

60' S&E/ACCESS ESMT.
 CITY OF MISS. CITY

ACREAGE
 CALL L.D. AN
 BILL WATS

ACREAGE
 PORTION OF CALL 2497.4 ACRES
 HILLSBORO ESTATES