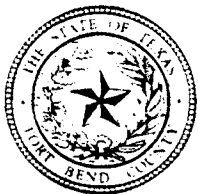


5A



FORT BEND COUNTY ENGINEERING

Fort Bend County, Texas

D. Jesse Hegemier
County Engineer

April 29, 2009

Commissioner Richard Morrison
Fort Bend County Precinct 1
1517 Ransom Road, Suite 300
Richmond, Texas 77469

**RE: Fairpark Village, Section 1 -Traffic Control Plan
Fairpark Village, Section 2**

Dear Commissioner:

Fort Bend County Engineering has completed and recommends approval of the traffic control plans for the above referenced subdivision. The public hearing date for acceptance of the plans is being scheduled.

A copy of the traffic control plan is attached for your review. If you should have any questions, please give me a call.

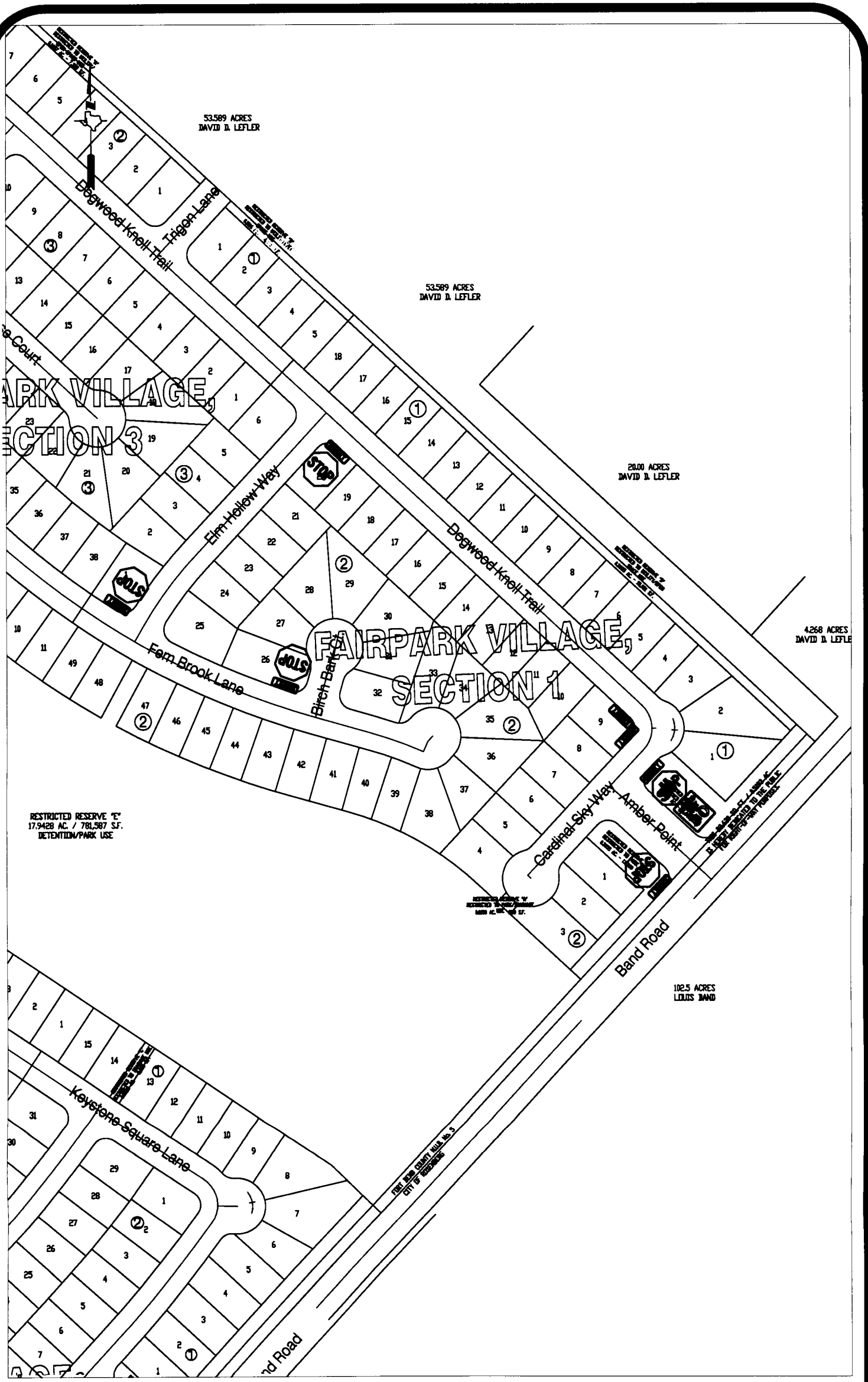
Sincerely,

A handwritten signature in black ink, appearing to read "Nathan D. Hatcher".

Nathan D. Hatcher
Assistant to County Engineer

NDH/mjs

cc: Judge Robert E. Hebert, County Judge
Marc Grant - FBC Road & Bridge
Marc Grant - Signage Department
File



Note:

The purpose of this traffic control plan is to establish traffic control for Fairpark Village, Section 1.

Drawn By: L. Brdecka

Date: 4-29-09

Approved By: Nathan Hatcher

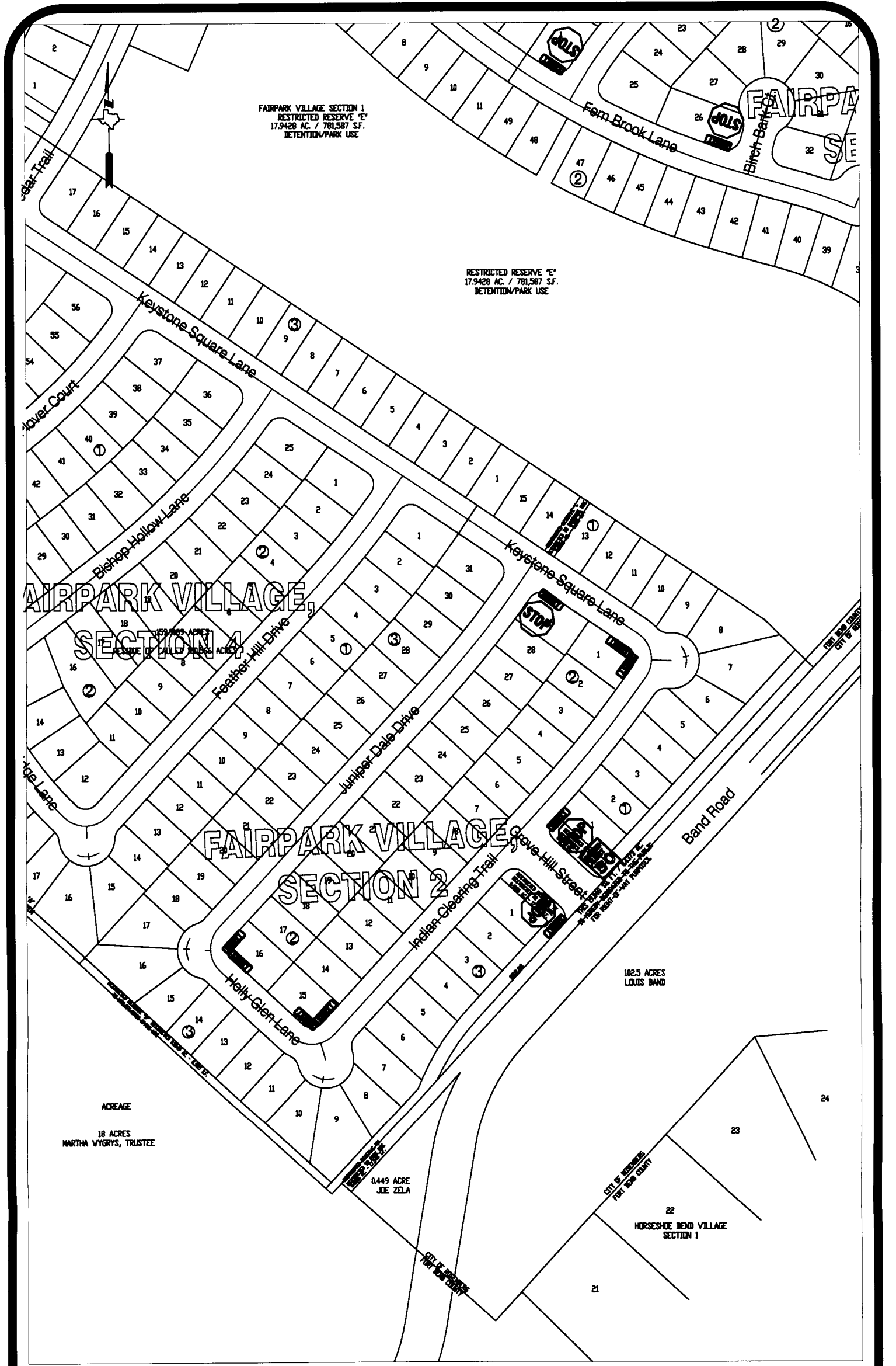
Date: 4-29-09

Scale

1" = 200'-0"

**Fairpark Village, Section 1
Control Map and
Traffic Sign Layout**

Fort Bend County Engineering Dept.
1124 Blume Road
Rosenberg, Texas 77471



FAIRPARK VILLAGE SECTION 1
 RESTRICTED RESERVE "E"
 17.9428 AC. / 781,587 SF.
 DETENTION/PARK USE

RESTRICTED RESERVE "E"
 17.9428 AC. / 781,587 SF.
 DETENTION/PARK USE

FAIRPARK VILLAGE,
 SECTION 4

FAIRPARK VILLAGE,
 SECTION 2

ACREAGE
 18 ACRES
 MARTHA VYGRYS, TRUSTEE

0.449 ACRE
 JOE ZELA

1025 ACRES
 LOUIS BAND

22
 HORSESHOE BEND VILLAGE
 SECTION 1

Note:
 The purpose of this traffic control plan is to establish traffic control for Fairpark Village, Section 2.

Drawn By: L. Brdecka
 Date: 4-29-09
 Approved By: Nathan Hatcher
 Date: 4-29-09
 Scale
 1" = 200'-0"

**Fairpark Village, Section 2
 Control Map and
 Traffic Sign Layout**
 Fort Bend County Engineering Dept.
 1124 Blume Road
 Rosenberg, Texas 77471