

5B1B



## FORT BEND COUNTY ENGINEERING

Fort Bend County, Texas

D. Jesse Hegemier  
County Engineer

April 28, 2009

Commissioner W. A. "Andy" Meyers  
Fort Bend County Precinct 3  
1809 Eldridge Road  
Sugar Land, Texas 77478

**RE: Long Meadow Farms, Section 21 -Traffic Control Plan**

Dear Commissioner:

Fort Bend County Engineering has completed and recommends approval of the traffic control plan for the above referenced subdivision. The public hearing date for acceptance of the plans are being scheduled.

A copy of the traffic control plan is attached for your review. If you should have any questions, please give me a call.

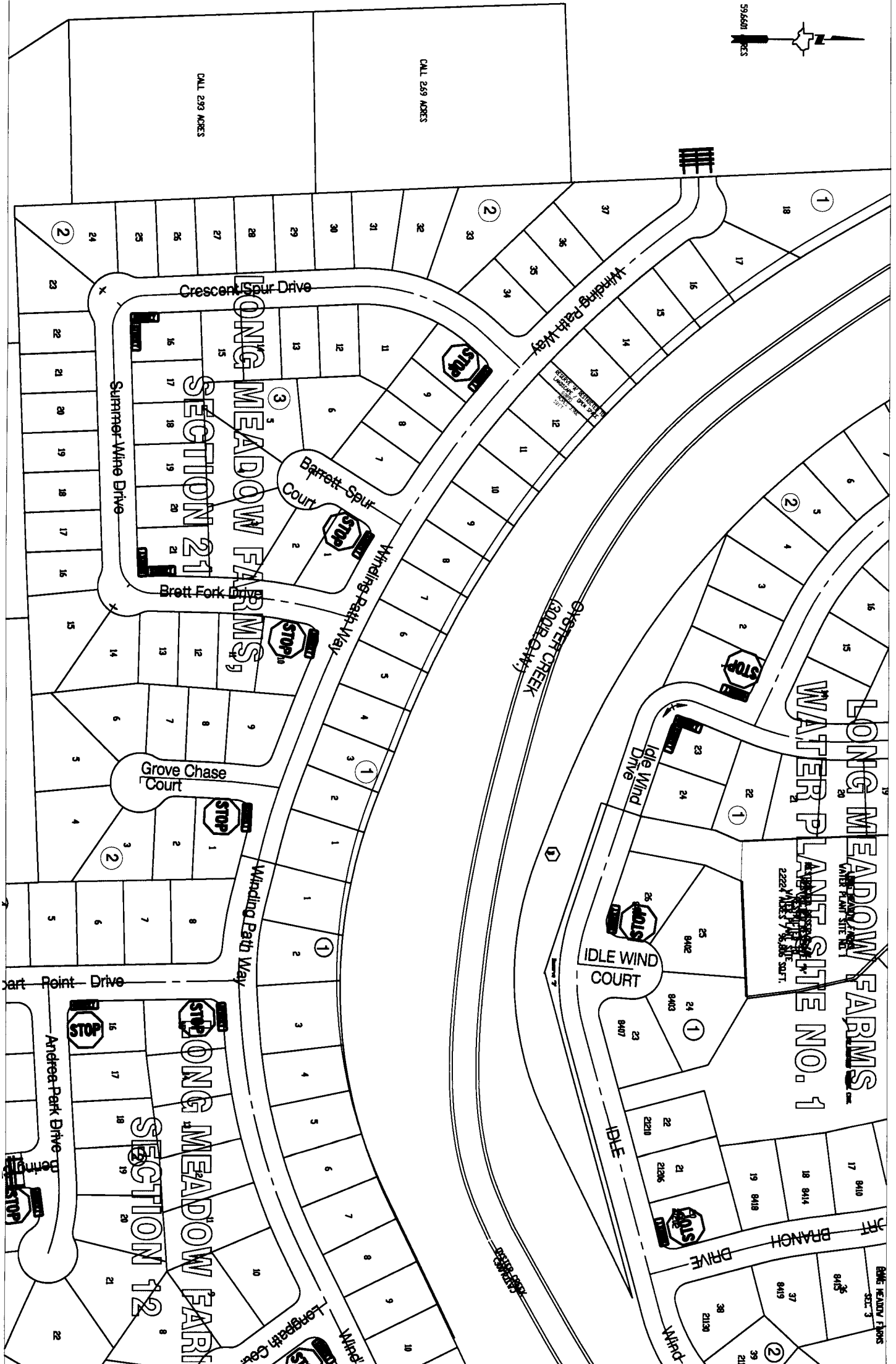
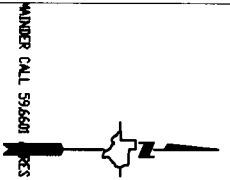
Sincerely,

A handwritten signature in cursive script that reads "Steven L. Evans".

Steven L. Evans  
Assistant to County Engineer

SLE/mjs

cc: Judge Robert E. Hebert, County Judge  
Marc Grant - FBC Road & Bridge  
Marc Grant - Signage Department  
File



**Note:**

The purpose of this traffic control plan is to establish traffic control for Long Meadow Farms, Section 21.

Drawn By: L. Brdecka  
 Date: 4-8-09  
 Approved By: Steve Evans  
 Date: 4-8-09  
 Scale  
 1" = 200'-0"

**Long Meadow Farms, Section 21  
 Control Map and  
 Traffic Sign Layout**

Fort Bend County Engineering Dept.  
 1124 Blume Road  
 Rosenberg, Texas 77471