

FORT BEND COUNTY ENGINEERING

Fort Bend County, Texas

D. Jesse Hegemier
County Engineer

April 28, 2009

Commissioner W. A. "Andy" Meyers
Fort Bend County Precinct 3
1809 Eldridge Road
Sugar Land, Texas 77478

Re: Townewest Subdivision - Traffic Control Plan
Take all appropriate action on Petition from the Townewest Homeowners Association requesting that Fort Bend County place signs at the locations reflected on the traffic control plan prohibiting overnight parking of commercial motor vehicles pursuant to Texas Transportation Code Ann. §545.307

Dear Commissioner:

The Fort Bend County Engineering Department has completed a traffic control plan for the Townewest Subdivision to prohibit overnight truck parking of commercial motor vehicles within the subdivision. A petition has valid signatures of 26% of the residents within the subdivision. This meets the 25% required. Fort Bend Engineering has no objection to placing "Overnight Parking of Commercial Motor Vehicles is Prohibited" signs at the locations indicated on the attached traffic control plan, pursuant to Texas Transportation Code Ann. §545.307.

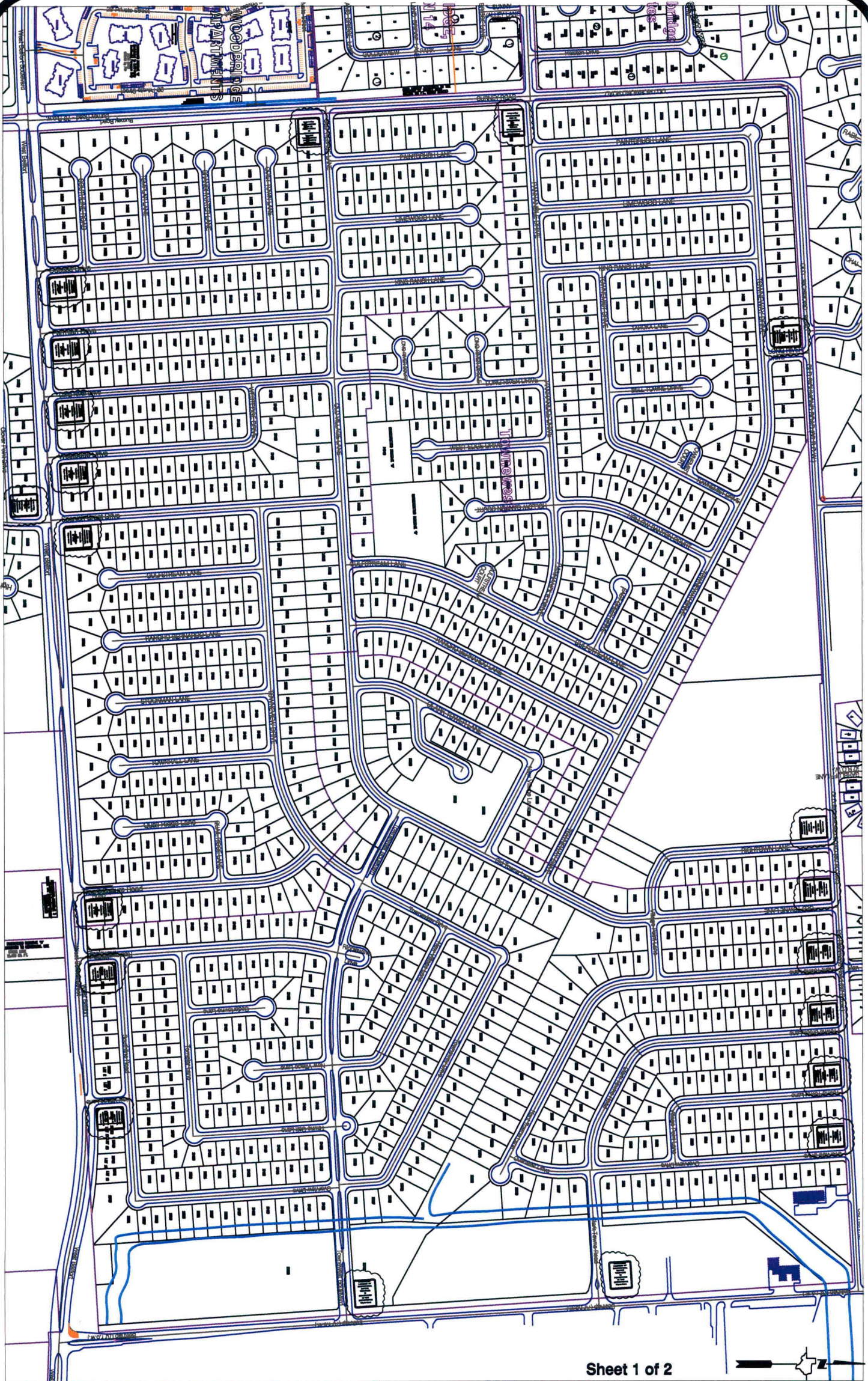
The Engineering Department recommends acceptance of the traffic control plan as submitted. The public hearing date for acceptance of the plan is being scheduled. A copy of the traffic control plan is attached for your review. If you should have any questions, please give me a call.

Sincerely,

Steven L. Evans
Assistant to County Engineer

SLE/mjs

cc: Judge Robert E. Hebert, County Judge
Marc Grant - FBC Road & Bridge
Marc Grant - Signage Department
File



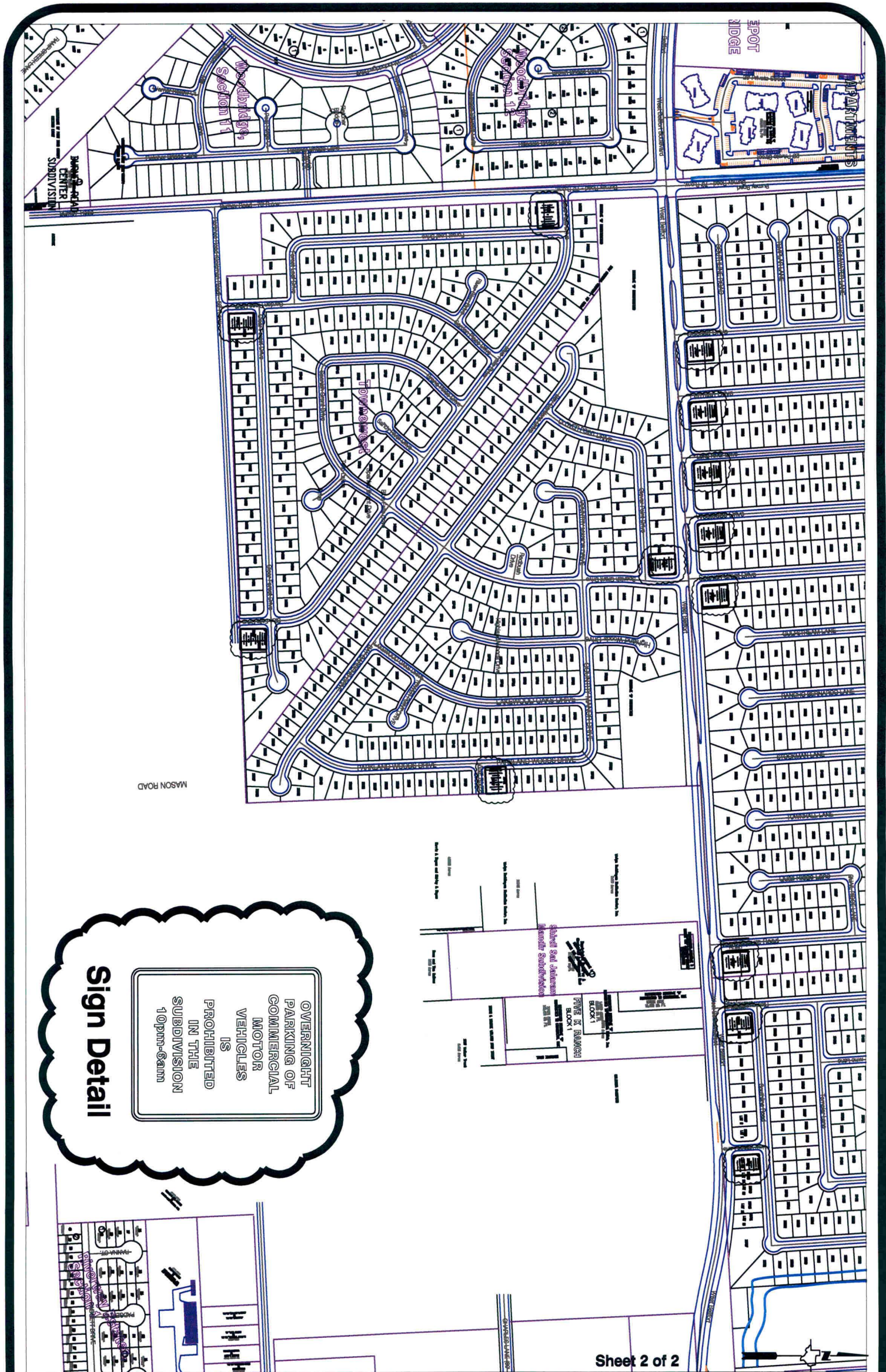
Sheet 1 of 2



Note:
 The purpose of this traffic control plan is to establish "No Commercial Vehicle Parking" traffic control signs for Townwest Subdivision as indicated on the map.

Drawn By: L. Brdecka
 Date: 4-28-09
 Approved By: Steven L. Evans
 Date: 4-28-09
 Scale
 1" = 500'-0"

**Townwest Subdivision
 Control Map and
 Traffic Sign Layout**
 Fort Bend County Engineering Dept.
 1124 Blume Road
 Rosenberg, Texas 77471



Note:

The purpose of this traffic control plan is to establish "No Commercial Vehicle Parking" traffic control signs for Townwest Subdivision as indicated on the map.

Drawn By: L. Brdecka

Date: 4-28-09

Approved By: Steven L. Evans

Date: 4-28-09

Scale

1" = 500'-0"

**Townwest Subdivision
Control Map and
Traffic Sign Layout**

Fort Bend County Engineering Dept.
1124 Blume Road
Rosenberg, Texas 77471