



April 29, 2026

Commissioner Vincent Morales, Jr.
Fort Bend County Commissioner, Pct. 1
22333 Grand Corner Drive, Suite 105
Katy, TX 77494

Re: Fort Bend County Municipal Utility District No. 214
Woods Road Offsite Utilities for Cross Creek West
Authorization for Detour Route

Dear Mr. Morales:

On behalf of Fort Bend County Municipal Utility District No. 214, we request a detour route for Woods Road Offsite Utilities for Cross Creek West shown in the exhibits attached to this letter.

The project that will cause this detour route consists of the construction of an offsite 12" waterline, 12" force main, and 5'x4' RCB storm boxes that will serve the community known as Cross Creek West. The storm boxes will also serve to drain the future upgrade of Woods Road to a full boulevard.

The 12" waterline and 12" force main will be connecting into an existing water plant and wastewater treatment plant, respectively. The storm boxes will be draining out into an existing drainage channel down south.

The anticipated construction start date for this project is June 1st. The detour route proposed in the exhibits attached will be from the start date of the project to the end of the project.

If you have any questions or require any additional information, please feel free to email me at jsvatek@bgeinc.com.

Sincerely,

A handwritten signature in black ink, appearing to read "Jason M. Svatek", is written over a horizontal line.

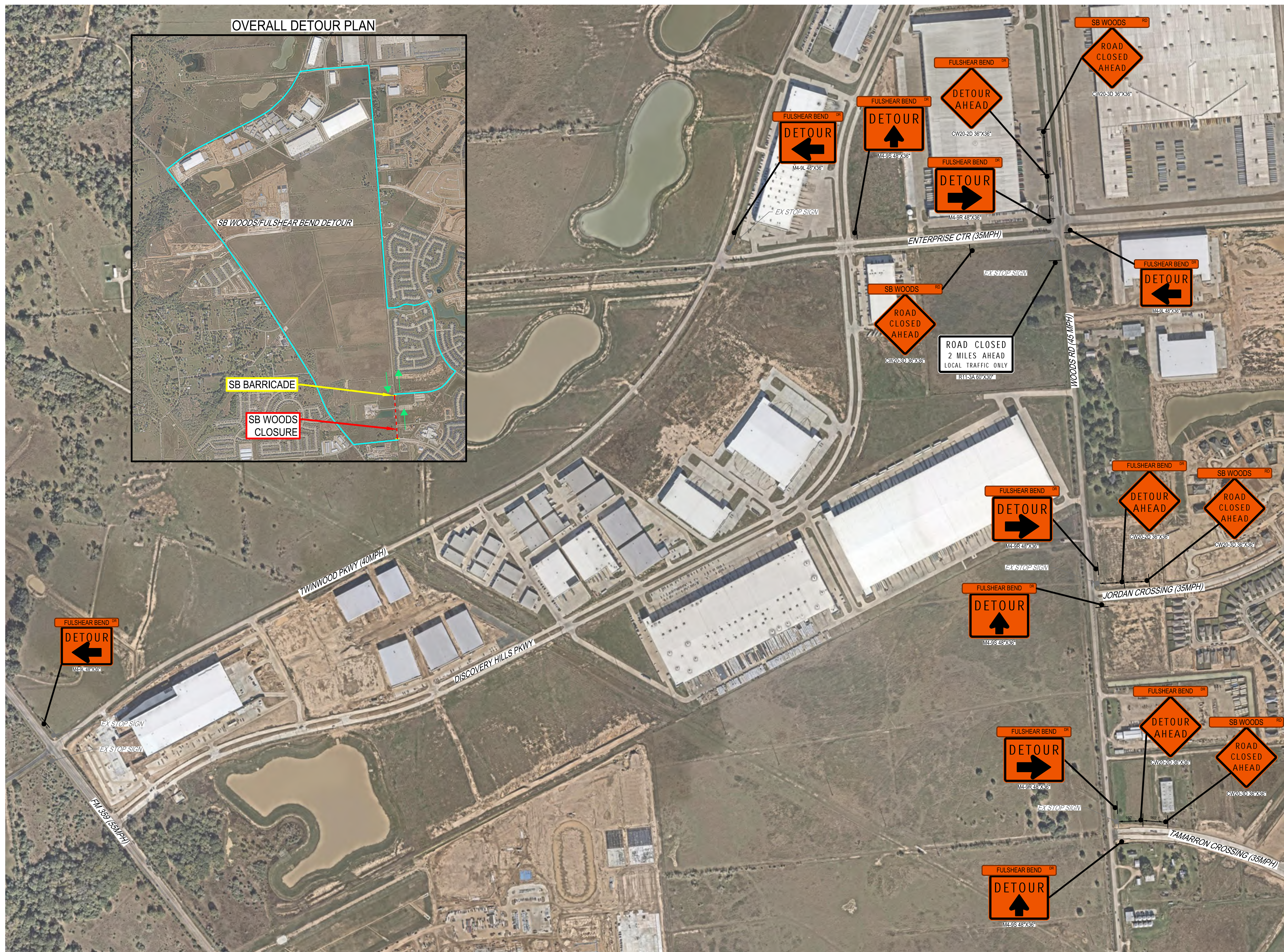
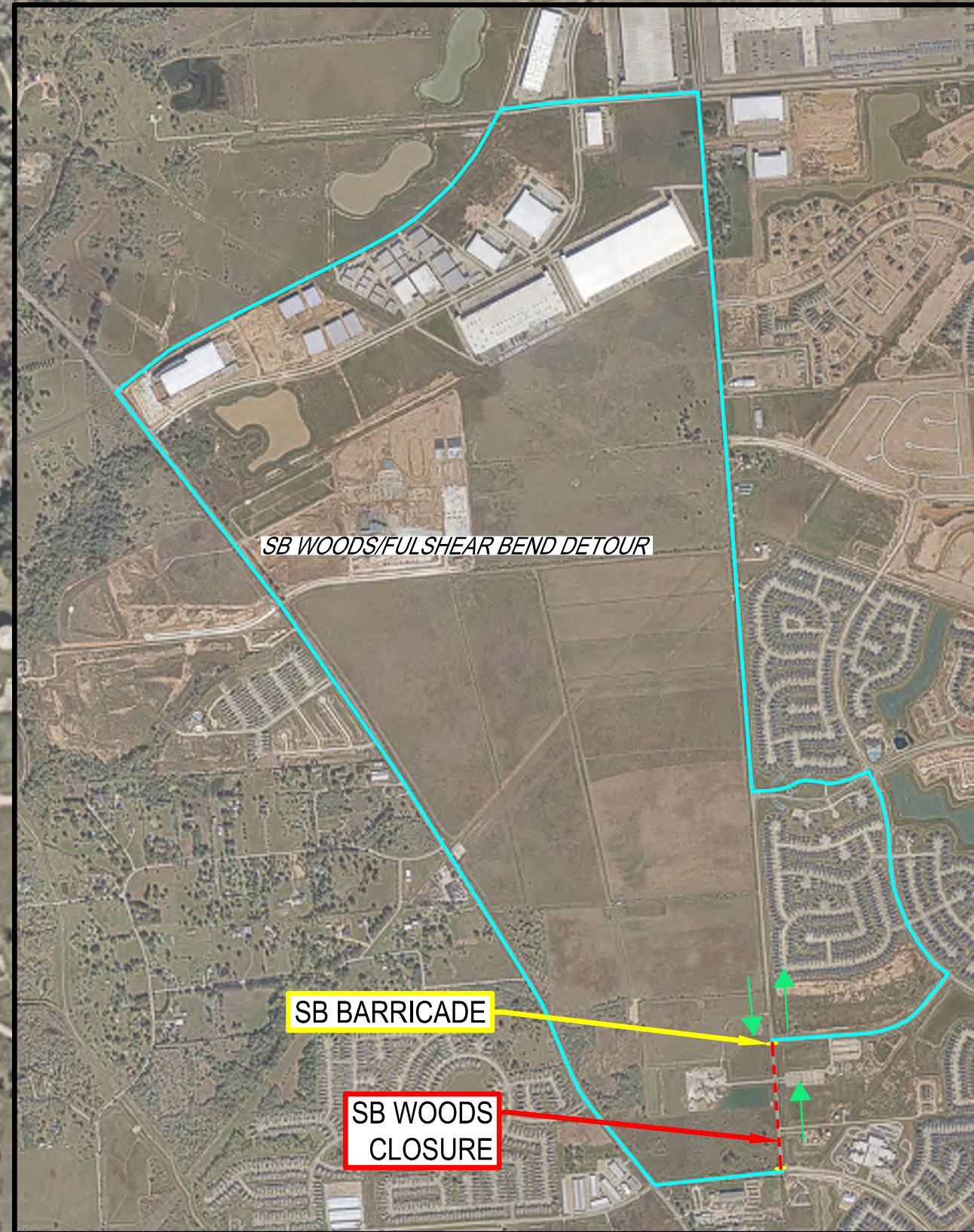
Jason Svatek, P.E.
Director

cc: Rick Staigle - Fort Bend County Engineering (email)
BGE File

Serving. Leading. Solving.™

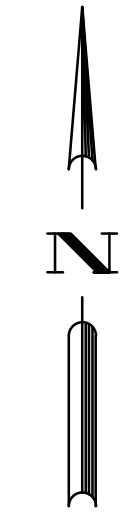
BGE, Inc. • 10777 Westheimer Road, Suite 400 • Houston, Texas 77042 • 281-558-8700 • www.bgeinc.com

OVERALL DETOUR PLAN



BENCHMARKS:
PROJECT
 BENCHMARK: BENCHMARK IS A STAINLESS STEEL ROD STAMPED HCSD 68 1988 AT THE INTERSECTION OF FM 1463 AND THE ENTRANCE OF A PRIVATE GRAVEL ROAD 0.11 MILES SOUTH OF CORBETT ROAD, EAST SIDE OF FM 1463, 16 FEET EAST OF FENCE AND APPROXIMATELY 10 FEET SOUTH OF THE GRAVEL ROAD, KEY MAP PAGE 484S.
 ELEVATION: 136.32 FEET NAVD-88, 2001 ADJUSTMENT
TBM-2
 BENCHMARK IS AN NGS DISK STAMPED "11505-1987" LOCATED 5.730 FEET WEST OF THE INTERSECTION OF THE WEST RIGHT-OF-WAY LINE OF FM 1463 WITH THE NORTH RIGHT-OF-WAY LINE OF FM 1093, APPROXIMATELY 66.5 FEET NORTH OF THE CENTERLINE OF FM 1093, 27 FEET NORTH OF THE EAST END OF A CONCRETE CULVERT PIPE, 65 FEET EAST OF A POWER POLE AND 1.5 FEET SOUTH OF A FENCE LINE, KEY MAP PAGE 508.
 (BENCHMARK WAS DISTURBED IN 2017)
 ELEVATION: 134.46 FEET NAVD-88, 2001 ADJUSTMENT
TBM 1-14-1
 BOX CUT ON TOP OF A 30-INCH REINFORCED CONCRETE PIPE, LOCATED FROM THE INTERSECTION OF NORTH FOLSHEAR DRIVE AND F.M. 359, GOING NORTH TO THE FIRST DRIVE ON THE EAST SIDE OF F.M. 359, BEING ON THE WEST SIDE OF PIPE.
 ELEVATION: 145.57 FEET NAVD-88, 2001 ADJUSTMENT
TBM 1-16-1
 BOX CUT ON A REINFORCED CONCRETE PIPE, LOCATED FROM THE INTERSECTION OF F.M. 359 AND JORDAN ROAD, GOING EAST APPROXIMATELY 20.30 MILES TO SAID PIPE AT THE CURVE, BEING ON THE WEST SIDE OF GATE.
 ELEVATION: 147.25 FEET NAVD-88, 2001 ADJUSTMENT
TBM 1-26-1
 BOX CUT ON TOP OF A 24-INCH REINFORCED CONCRETE PIPE, LOCATED AT THE NORTHWEST CORNER OF F.M. 359 AND HEPPLEWHITE DRIVE.
 ELEVATION: 150.79 FEET NAVD-88, 2001 ADJUSTMENT
TBM 1-30-1
 BOX CUT ON A CONCRETE BOX CULVERT, LOCATED FROM THE INTERSECTION OF HEPPLEWHITE DRIVE AND F.M. 359, GOING NORTH ALONG F.M. 359 APPROXIMATELY 45.90 MILES TO SAID PIPE ON THE EAST SIDE OF F.M. 359, SAME BEING THE FIRST CULVERT SOUTH OF THE WALLER AND FORT-BEND COUNTY LINE.
 ELEVATION 155.43 FEET NAVD-88, 2001 ADJUSTMENT

- GENERAL NOTES:**
- CONTRACTOR SHALL PROVIDE AND INSTALL TRAFFIC CONTROL DEVICES IN CONFORMANCE WITH PART VI OF THE LATEST REVISION OF THE TEXAS MUTCD.
 - CONTRACTOR TO MAINTAIN DRIVEWAY ACCESS UNLESS OTHERWISE NOTED.
 - ALL ADVANCED WARNING SIGNS ARE TO BE SET PRIOR TO START OF CONSTRUCTION ACTIVITIES, KEPT CLEAN, AND TO REMAIN IN PLACE UNTIL ALL CONSTRUCTION ACTIVITIES ARE COMPLETE AND ACCEPTED BY THE ENGINEER.
 - ALL SIGNS AND BARRICADES MUST BE RETROREFLECTIVE.
 - AVOID LOCATING TEMPORARY SIGNS BEHIND TREES OR OTHER VISUAL OBSTRUCTIONS.
 - IF THE CONTRACTOR CHOOSES TO USE A DIFFERENT METHOD OF TRAFFIC CONTROL PLAN DURING THE CONSTRUCTION THAN WHAT IS OUTLINED IN THE CONTRACT DRAWINGS, THE CONTRACTOR SHALL BE RESPONSIBLE TO PREPARE AND SUBMIT ALTERNATIVE PLANS FOR APPROVAL TEN WORKING DAYS PRIOR TO IMPLEMENTATION. THESE PLANS SHALL BE DRAWN TO SCALE AND SEALED BY A LICENSED ENGINEER IN THE STATE OF TEXAS. UPON APPROVAL BY THE COUNTY, THE ALTERNATIVE PLAN SHALL BECOME THE BASIS FOR A "CHANGE IN CONTRACT" TO REVISE THE TRAFFIC CONTROL BID ITEMS ACCORDINGLY AND BECOME PART OF THE CONTRACT DOCUMENTS.



LEGEND

- TEMPORARY TRAFFIC GROUND MOUNTED SIGN
- TYPE 3 BARRICADE

REV. NO.	DATE	DESCRIPTION	P.E. APPR.
3			
2			
1			



BGE, Inc.
 10777 Westheimer, Suite 500
 Houston, TX 77042
 Tel: 281-258-8700 • www.bgeinc.com
 TBPPE Registration No. F-1046

THESE PLANS ARE ISSUED FOR THE PURPOSE OF PRELIMINARY REVIEW AND ARE NOT INTENDED FOR CONSTRUCTION. WHEN ISSUED IN FINAL FORM THEY WILL BE SEALED, SIGNED AND DATED.
 RESPONSIBLE ENGINEER:
 BGE, INC.
 F-1046
 JASON M. SVATEK, P.E.
 TEXAS REGISTRATION NO. 100192
 September 25, 2025

FORT BEND COUNTY M.U.D. NO. 214
WOODS ROAD OFFSITE UTILITIES FOR CROSS CREEK WEST

TRAFFIC CONTROL PLAN PHASE 3
 (SHEET 1 OF 3)

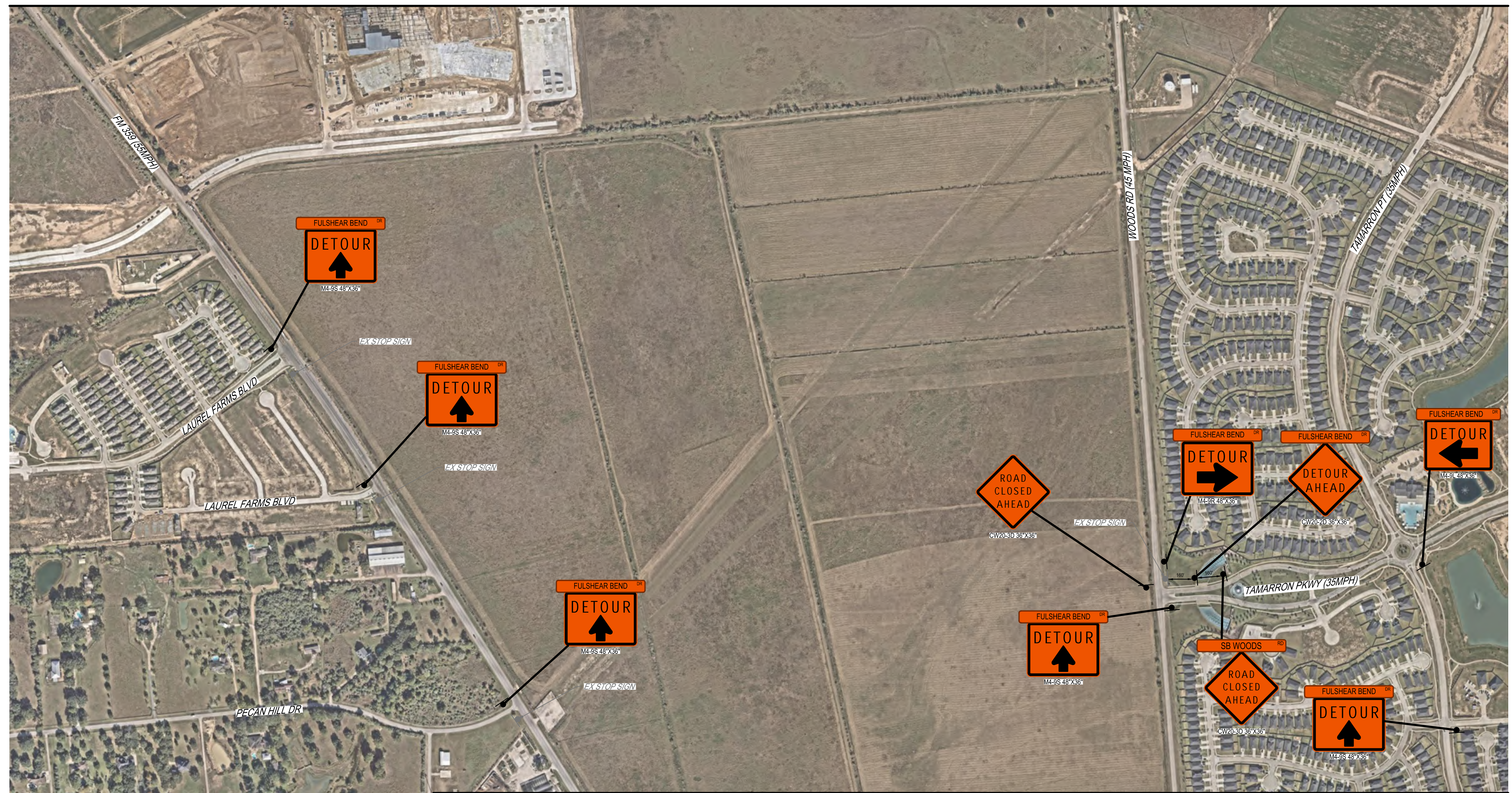
JOB NUMBER:	15616-00
SUBMITTED BY:	BGE, INC.
DESIGNED BY:	JWM
DRAWING SCALE:	HORIZ: 1" = 400' VERT:
DATE:	FEBRUARY 2026
DESIGNED BY:	GA
SURVEY BY:	BGE, INC.
SHEET NO:	11 OF 40
F.B. NO.:	CITY DWG NO.:

MATCH LINE A
 See Sheet 12

I:\bent\2025\15616-00\15616-00-01-TRAFFIC CONTROL PHASE 3.dwg

FORT BEND COUNTY M.U.D. NO. 214 - WOODS ROAD OFFSITE UTILITIES 15616-00

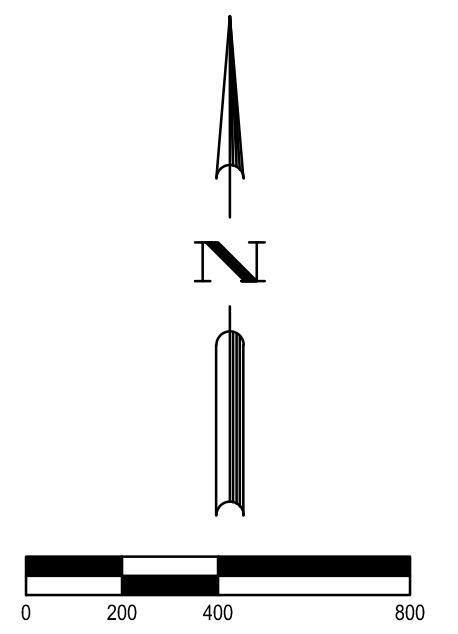
MATCH LINE A
See Sheet 11



MATCH LINE B
See Sheet 13

BENCHMARKS:
PROJECT BENCHMARK: BENCHMARK IS A STAINLESS STEEL ROD STAMPED HC3SD 68 1988 AT THE INTERSECTION OF FM 1463 AND THE ENTRANCE OF A PRIVATE GRAVEL ROAD 0.11 MILES SOUTH OF CORBITT ROAD, EAST SIDE OF FM 1463, 16 FEET EAST OF FENCE AND APPROXIMATELY 10 FEET SOUTH OF THE GRAVEL ROAD, KEY MAP PAGE 4845.
 ELEVATION: 136.32 FEET NAVD-88, 2001 ADJUSTMENT
TBM-2 BENCHMARK IS AN INS DISK STAMPED "11505-1987" LOCATED 5.730 FEET WEST OF THE INTERSECTION OF THE WEST RIGHT-OF-WAY LINE OF FM 1463 WITH THE NORTH RIGHT-OF-WAY LINE OF FM 1093, APPROXIMATELY 66.5 FEET NORTH OF THE CENTERLINE OF FM 1093, 27 FEET NORTH OF THE EAST END OF A CONCRETE CULVERT PIPE, 65 FEET EAST OF A POWER POLE AND 1.5 FEET SOUTH OF A FENCE LINE, KEY MAP PAGE 508.
 (BENCHMARK WAS DISTURBED IN 2017)
 ELEVATION: 134.46 FEET NAVD-88, 2001 ADJUSTMENT
TBM 1-14-1 BOX CUT ON TOP OF A 30-INCH REINFORCED CONCRETE PIPE, LOCATED FROM THE INTERSECTION OF NORTH FULSHEAR DRIVE AND F.M. 359, GOING NORTH TO THE FIRST DRIVE ON THE EAST SIDE OF F.M. 359, BEING ON THE WEST SIDE OF PIPE.
 ELEVATION: 145.57 FEET NAVD-88, 2001 ADJUSTMENT
TBM 1-16-1 BOX CUT ON A REINFORCED CONCRETE PIPE, LOCATED FROM THE INTERSECTION OF F.M. 359 AND JORDAN ROAD, GOING EAST APPROXIMATELY 20.30 MILES TO SAID PIPE AT THE CURVE, BEING ON THE WEST SIDE OF GATE.
 ELEVATION: 147.25 FEET NAVD-88, 2001 ADJUSTMENT
TBM 1-26-1 BOX CUT ON TOP OF A 24-INCH REINFORCED CONCRETE PIPE, LOCATED AT THE NORTHWEST CORNER OF F.M. 359 AND HEPPLEWHITE DRIVE.
 ELEVATION: 150.79 FEET NAVD-88, 2001 ADJUSTMENT
TBM 1-30-1 BOX CUT ON A CONCRETE BOX CULVERT, LOCATED FROM THE INTERSECTION OF HEPPLEWHITE DRIVE AND F.M. 359, GOING NORTH ALONG F.M. 359 APPROXIMATELY 15.90 MILES TO SAID PIPE ON THE EAST SIDE OF F.M. 359, SAME BEING THE FIRST CULVERT SOUTH OF THE WALLER AND FORT-BEND COUNTY LINE.
 ELEVATION 155.43 FEET NAVD-88, 2001 ADJUSTMENT

- GENERAL NOTES:**
- CONTRACTOR SHALL PROVIDE AND INSTALL TRAFFIC CONTROL DEVICES IN CONFORMANCE WITH PART VI OF THE LATEST REVISION OF THE TEXAS MUTCD.
 - CONTRACTOR TO MAINTAIN DRIVEWAY ACCESS UNLESS OTHERWISE NOTED.
 - ALL ADVANCED WARNING SIGNS ARE TO BE SET PRIOR TO START OF CONSTRUCTION ACTIVITIES, KEPT CLEAN, AND TO REMAIN IN PLACE UNTIL ALL CONSTRUCTION ACTIVITIES ARE COMPLETE AND ACCEPTED BY THE ENGINEER.
 - ALL SIGNS AND BARRICADES MUST BE RETROREFLECTIVE.
 - AVOID LOCATING TEMPORARY SIGNS BEHIND TREES OR OTHER VISUAL OBSTRUCTIONS.
 - IF THE CONTRACTOR CHOOSES TO USE A DIFFERENT METHOD OF TRAFFIC CONTROL PLAN DURING THE CONSTRUCTION THAN WHAT IS OUTLINED IN THE CONTRACT DRAWINGS, THE CONTRACTOR SHALL BE RESPONSIBLE TO PREPARE AND SUBMIT ALTERNATIVE PLANS FOR APPROVAL TEN WORKING DAYS PRIOR TO IMPLEMENTATION. THESE PLANS SHALL BE DRAWN TO SCALE AND SEALED BY A LICENSED ENGINEER IN THE STATE OF TEXAS. UPON APPROVAL BY THE COUNTY, THE ALTERNATIVE PLAN SHALL BECOME THE BASIS FOR A "CHANGE IN CONTRACT" TO REVISE THE TRAFFIC CONTROL BID ITEMS ACCORDINGLY AND BECOME PART OF THE CONTRACT DOCUMENTS.



LEGEND
 TEMPORARY TRAFFIC GROUND MOUNTED SIGN
 TYPE 3 BARRICADE

REV. NO.	DATE	DESCRIPTION	P.E. APPR.
3			
2			
1			

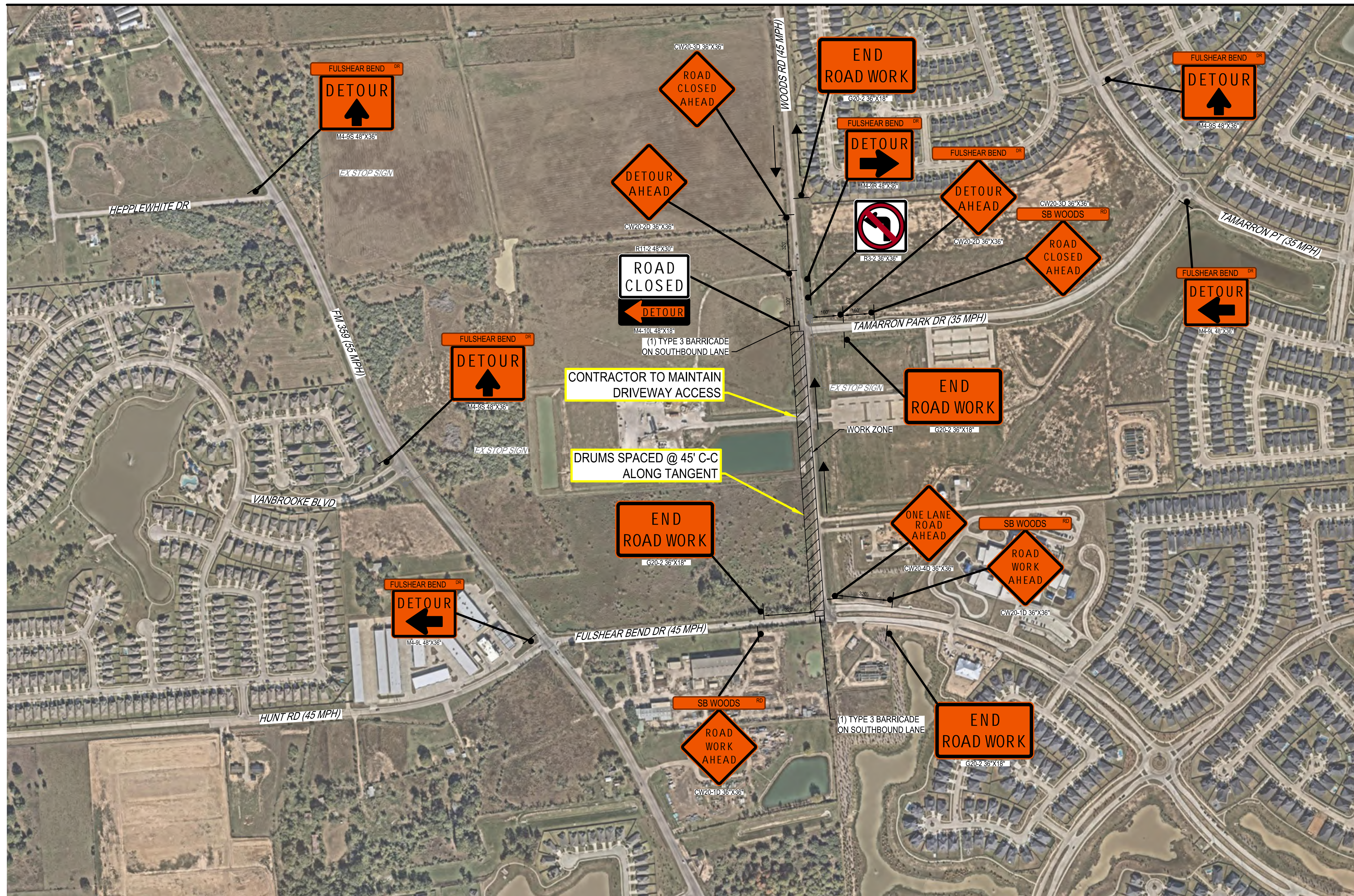
BGE, Inc.
 10777 Westheimer, Suite 500
 Houston, TX 77042
 Tel: 281-258-8700 • www.bgeinc.com
 TBP/E Registration No. F-1046

THESE PLANS ARE ISSUED FOR THE PURPOSE OF PRELIMINARY REVIEW AND ARE NOT INTENDED FOR CONSTRUCTION. WHEN ISSUED IN FINAL FORM THEY WILL BE SEALED, SIGNED AND DATED.

RESPONSIBLE ENGINEER:
 BGE, INC.
 F-1046
 JASON M. SVATEK, P.E.
 TEXAS REGISTRATION NO. 100192
 September 25, 2025

FORT BEND COUNTY M.U.D. NO. 214	
WOODS ROAD OFFSITE UTILITIES FOR CROSS CREEK WEST	
TRAFFIC CONTROL PLAN PHASE 3 (SHEET 2 OF 3)	
JOB NUMBER: 15616-00	
SUBMITTED BY: BGE, INC. DRAWING SCALE: HORIZ: 1" = 400' VERT: DATE: FEBRUARY 2026 SURVEY BY: BGE, INC. F.B. NO.:	DESIGNED BY: JWM DRAWN BY: GA SHEET NO. 12 OF 40 CITY DWG NO.:

MATCH LINE B
See Sheet 12



BENCHMARKS:

PROJECT
BENCHMARK: BENCHMARK IS A STAINLESS STEEL ROD STAMPED HC3SD 68 1988 AT THE INTERSECTION OF FM 1463 AND THE ENTRANCE OF A PRIVATE GRAVEL ROAD 0.11 MILES SOUTH OF CORBITT ROAD, EAST SIDE OF FM 1463, 16 FEET EAST OF FENCE AND APPROXIMATELY 10 FEET SOUTH OF THE GRAVEL ROAD, KEY MAP PAGE 484S.
ELEVATION: 136.32 FEET NAVD-88, 2001 ADJUSTMENT

TBM-2
BENCHMARK IS AN NGS DISK STAMPED "11505-1987" LOCATED 5.730 FEET WEST OF THE INTERSECTION OF THE WEST RIGHT-OF-WAY LINE OF FM 1463 WITH THE NORTH RIGHT-OF-WAY LINE OF FM 1093, APPROXIMATELY 66.5 FEET NORTH OF THE CENTERLINE OF FM 1093, 27 FEET NORTH OF THE EAST END OF A CONCRETE CULVERT PIPE, 65 FEET EAST OF A POWER POLE AND 1.5 FEET SOUTH OF A FENCE LINE, KEY MAP PAGE 528L.
(BENCHMARK WAS DISTURBED IN 2017)
ELEVATION: 134.46 FEET NAVD-88, 2001 ADJUSTMENT

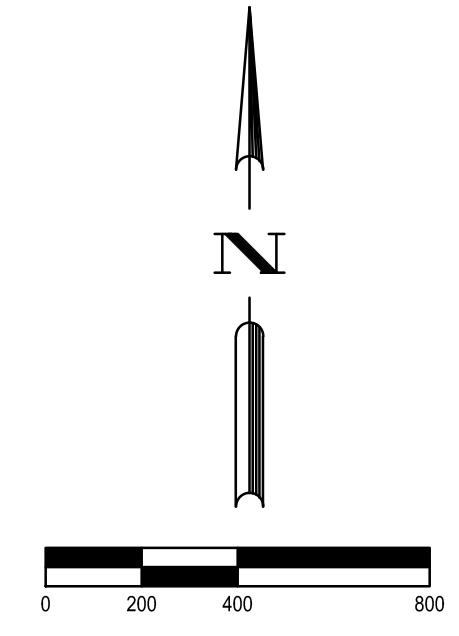
TBM 1-14-1
BOX CUT ON TOP OF A 30-INCH REINFORCED CONCRETE PIPE, LOCATED FROM THE INTERSECTION OF NORTH FULPSHEAR DRIVE AND F.M. 359, GOING NORTH TO THE FIRST DRIVE ON THE EAST SIDE OF F.M. 359, BEING ON THE WEST SIDE OF PIPE.
ELEVATION: 145.57 FEET NAVD-88, 2001 ADJUSTMENT

TBM 1-16-1
BOX CUT ON A REINFORCED CONCRETE PIPE, LOCATED FROM THE INTERSECTION OF F.M. 359 AND JORDAN ROAD, GOING EAST APPROXIMATELY 20.30 MILES TO SAID PIPE AT THE CURVE, BEING ON THE WEST SIDE OF GATE.
ELEVATION: 147.25 FEET NAVD-88, 2001 ADJUSTMENT

TBM 1-26-1
BOX CUT ON TOP OF A 24-INCH REINFORCED CONCRETE PIPE, LOCATED AT THE NORTHWEST CORNER OF F.M. 359 AND HEPPLEWHITE DRIVE.
ELEVATION: 150.79 FEET NAVD-88, 2001 ADJUSTMENT

TBM 1-30-1
BOX CUT ON A CONCRETE BOX CULVERT, LOCATED FROM THE INTERSECTION OF HEPPLEWHITE DRIVE AND F.M. 359, GOING NORTH ALONG F.M. 359 APPROXIMATELY 15.90 MILES TO SAID PIPE ON THE EAST SIDE OF F.M. 359, SAME BEING THE FIRST CULVERT SOUTH OF THE WALLER AND FORT-BEND COUNTY LINE.
ELEVATION 155.43 FEET NAVD-88, 2001 ADJUSTMENT

- GENERAL NOTES:**
- CONTRACTOR SHALL PROVIDE AND INSTALL TRAFFIC CONTROL DEVICES IN CONFORMANCE WITH PART VI OF THE LATEST REVISION OF THE TEXAS MUTCD.
 - CONTRACTOR TO MAINTAIN DRIVEWAY ACCESS UNLESS OTHERWISE NOTED.
 - ALL ADVANCED WARNING SIGNS ARE TO BE SET PRIOR TO START OF CONSTRUCTION ACTIVITIES, KEPT CLEAN, AND TO REMAIN IN PLACE UNTIL ALL CONSTRUCTION ACTIVITIES ARE COMPLETE AND ACCEPTED BY THE ENGINEER.
 - ALL SIGNS AND BARRICADES MUST BE RETROREFLECTIVE.
 - AVOID LOCATING TEMPORARY SIGNS BEHIND TREES OR OTHER VISUAL OBSTRUCTIONS.
 - IF THE CONTRACTOR CHOOSES TO USE A DIFFERENT METHOD OF TRAFFIC CONTROL PLAN DURING THE CONSTRUCTION THAN WHAT IS OUTLINED IN THE CONTRACT DRAWINGS, THE CONTRACTOR SHALL BE RESPONSIBLE TO PREPARE AND SUBMIT ALTERNATIVE PLANS FOR APPROVAL TEN WORKING DAYS PRIOR TO IMPLEMENTATION. THESE PLANS SHALL BE DRAWN TO SCALE AND SEALED BY LICENSED ENGINEER IN THE STATE OF TEXAS. UPON APPROVAL BY THE COUNTY, THE ALTERNATIVE PLAN SHALL BECOME THE BASIS FOR A "CHANGE IN CONTRACT" TO REVISE THE TRAFFIC CONTROL BID ITEMS ACCORDINGLY AND BECOME PART OF THE CONTRACT DOCUMENTS.



LEGEND

TEMPORARY TRAFFIC GROUND MOUNTED SIGN

TYPE 3 BARRICADE

REV. NO.	DATE	DESCRIPTION	P.E. APPR.
3			
2			
1			

BGE, Inc.
10777 Westheimer, Suite 500
Houston, TX 77042
Tel: 281-258-8700 • www.bgeinc.com
TBP/E Registration No. F-1046

THESE PLANS ARE ISSUED FOR THE PURPOSE OF PRELIMINARY REVIEW AND ARE NOT INTENDED FOR CONSTRUCTION. WHEN ISSUED IN FINAL FORM THEY WILL BE SEALED, SIGNED AND DATED.

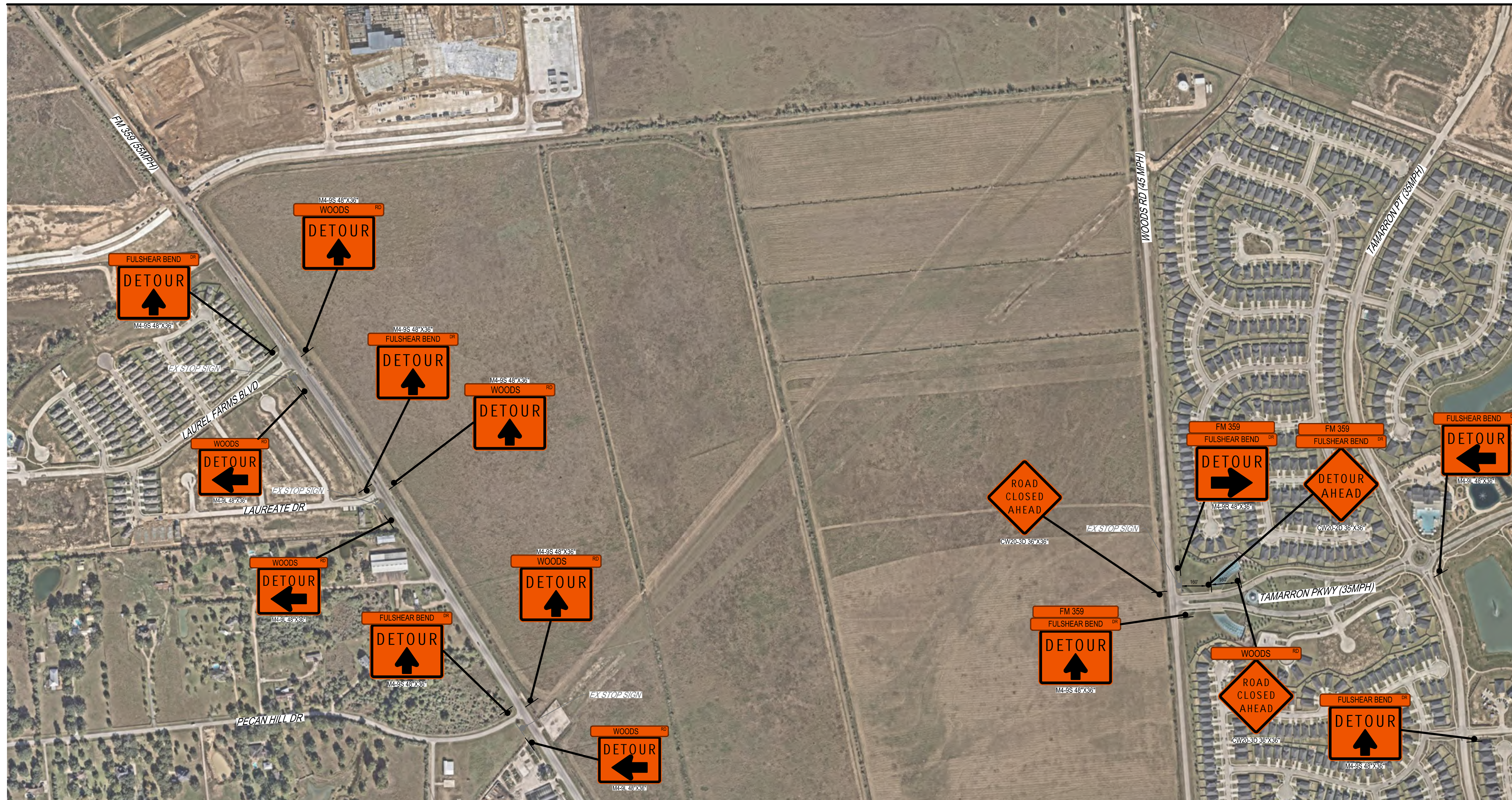
RESPONSIBLE ENGINEER:
BGE, INC.
F-1046
JASON M. SVATEK, P.E.
TEXAS REGISTRATION NO. 100192
September 25, 2025

FORT BEND COUNTY M.U.D. NO. 214	
WOODS ROAD OFFSITE UTILITIES FOR CROSS CREEK WEST	
TRAFFIC CONTROL PLAN PHASE 3 (SHEET 3 OF 3)	
JOB NUMBER: 15616-00	
SUBMITTED BY: BGE, INC. DRAWING SCALE: HORIZ: 1" = 400' VERT: DATE: FEBRUARY 2026 SURVEY BY: BGE, INC. F.B. NO.:	DESIGNED BY: JWM DRAWN BY: GA SHEET NO. 13 OF 40 CITY DWG NO.:

I:\bent\cadd\2026\15616-00\15616-00-03-Traffic-Phase3.dwg

FORT BEND COUNTY M.U.D. NO. 214 - WOODS ROAD OFFSITE UTILITIES 15616-00

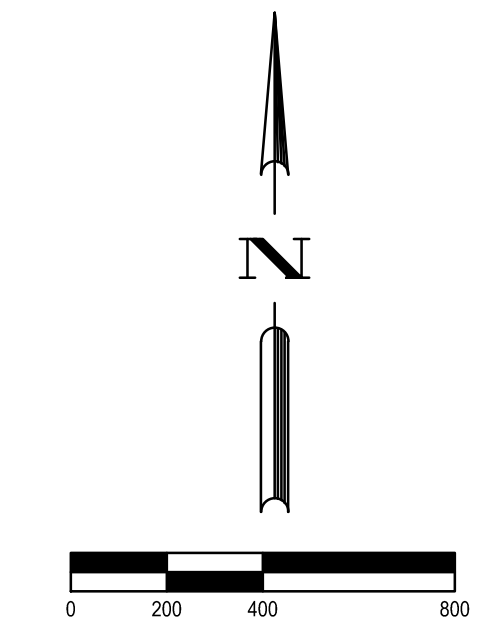
MATCH LINE A
See Sheet 17



MATCH LINE B
See Sheet 19

- BENCHMARKS:**
- PROJECT**
BENCHMARK: BENCHMARK IS A STAINLESS STEEL ROD STAMPED HC3SD 68 1988 AT THE INTERSECTION OF FM 1463 AND THE ENTRANCE OF A PRIVATE GRAVEL ROAD 0.11 MILES SOUTH OF CORBETT ROAD, EAST SIDE OF FM 1463, 16 FEET EAST OF FENCE AND APPROXIMATELY 10 FEET SOUTH OF THE GRAVEL ROAD, KEY MAP PAGE 4845.
ELEVATION: 136.32 FEET NAVD-88, 2001 ADJUSTMENT
- TBM-2**
BENCHMARK IS AN INS DISK STAMPED "11505-1987" LOCATED 5.730 FEET WEST OF THE INTERSECTION OF THE WEST RIGHT-OF-WAY LINE OF FM 1463 WITH THE NORTH RIGHT-OF-WAY LINE OF FM 1093, APPROXIMATELY 66.5 FEET NORTH OF THE CENTERLINE OF FM 1093, 27 FEET NORTH OF THE EAST END OF A CONCRETE CULVERT PIPE, 65 FEET EAST OF A POWER POLE AND 1.5 FEET SOUTH OF A FENCE LINE, KEY MAP PAGE 508.
(BENCHMARK WAS DISTURBED IN 2017)
ELEVATION: 134.46 FEET NAVD-88, 2001 ADJUSTMENT
- TBM 1-14-1**
BOX CUT ON TOP OF A 30-INCH REINFORCED CONCRETE PIPE, LOCATED FROM THE INTERSECTION OF NORTH FULSHEAR DRIVE AND F.M. 359, GOING NORTH TO THE FIRST DRIVE ON THE EAST SIDE OF F.M. 359, BEING ON THE WEST SIDE OF PIPE.
ELEVATION: 145.57 FEET NAVD-88, 2001 ADJUSTMENT
- TBM 1-16-1**
BOX CUT ON A REINFORCED CONCRETE PIPE, LOCATED FROM THE INTERSECTION OF F.M. 359 AND JORDAN ROAD, GOING EAST APPROXIMATELY 20.30 MILES TO SAID PIPE AT THE CURVE, BEING ON THE WEST SIDE OF GATE.
ELEVATION: 147.25 FEET NAVD-88, 2001 ADJUSTMENT
- TBM 1-26-1**
BOX CUT ON TOP OF A 24-INCH REINFORCED CONCRETE PIPE, LOCATED AT THE NORTHWEST CORNER OF F.M. 359 AND HEPPLEWHITE DRIVE.
ELEVATION: 150.79 FEET NAVD-88, 2001 ADJUSTMENT
- TBM 1-30-1**
BOX CUT ON A CONCRETE BOX CULVERT, LOCATED FROM THE INTERSECTION OF HEPPLEWHITE DRIVE AND F.M. 359, GOING NORTH ALONG F.M. 359 APPROXIMATELY 15.90 MILES TO SAID PIPE ON THE EAST SIDE OF F.M. 359, SAME BEING THE FIRST CULVERT SOUTH OF THE WALLER AND FORT-BEND COUNTY LINE.
ELEVATION 155.43 FEET NAVD-88, 2001 ADJUSTMENT

- GENERAL NOTES:**
- CONTRACTOR SHALL PROVIDE AND INSTALL TRAFFIC CONTROL DEVICES IN CONFORMANCE WITH PART VI OF THE LATEST REVISION OF THE TEXAS MUTCD.
 - CONTRACTOR TO MAINTAIN DRIVEWAY ACCESS UNLESS OTHERWISE NOTED.
 - ALL ADVANCED WARNING SIGNS ARE TO BE SET PRIOR TO START OF CONSTRUCTION ACTIVITIES, KEPT CLEAN, AND TO REMAIN IN PLACE UNTIL ALL CONSTRUCTION ACTIVITIES ARE COMPLETE AND ACCEPTED BY THE ENGINEER.
 - ALL SIGNS AND BARRICADES MUST BE RETROREFLECTIVE.
 - AVOID LOCATING TEMPORARY SIGNS BEHIND TREES OR OTHER VISUAL OBSTRUCTIONS.
 - IF THE CONTRACTOR CHOOSES TO USE A DIFFERENT METHOD OF TRAFFIC CONTROL PLAN DURING THE CONSTRUCTION THAN WHAT IS OUTLINED IN THE CONTRACT DRAWINGS, THE CONTRACTOR SHALL BE RESPONSIBLE TO PREPARE AND SUBMIT ALTERNATIVE PLANS FOR APPROVAL TEN WORKING DAYS PRIOR TO IMPLEMENTATION. THESE PLANS SHALL BE DRAWN TO SCALE AND SEALED BY A LICENSED ENGINEER IN THE STATE OF TEXAS. UPON APPROVAL BY THE COUNTY, THE ALTERNATIVE PLAN SHALL BECOME THE BASIS FOR A "CHANGE IN CONTRACT" TO REVISE THE TRAFFIC CONTROL BID ITEMS ACCORDINGLY AND BECOME PART OF THE CONTRACT DOCUMENTS.



- LEGEND**
- TEMPORARY TRAFFIC GROUND MOUNTED SIGN
 - TYPE 3 BARRICADE

REV. NO.	DATE	DESCRIPTION	P.E. APPR.
3			
2			
1			

BGE, Inc.
10777 Westheimer, Suite 500
Houston, TX 77042
Tel: 281-258-8700 • www.bgeinc.com
TBP/E Registration No. F-1046

THESE PLANS ARE ISSUED FOR THE PURPOSE OF PRELIMINARY REVIEW AND ARE NOT INTENDED FOR CONSTRUCTION. WHEN ISSUED IN FINAL FORM THEY WILL BE SEALED, SIGNED AND DATED.

RESPONSIBLE ENGINEER:
BGE, INC.
F-1046
JASON M. SVATEK, P.E.
TEXAS REGISTRATION NO. 100192
September 25, 2025

FORT BEND COUNTY M.U.D. NO. 214	
WOODS ROAD OFFSITE UTILITIES FOR CROSS CREEK WEST	
TRAFFIC CONTROL PLAN PHASE 5 (SHEET 2 OF 4)	
JOB NUMBER: 15616-00	
SUBMITTED BY: BGE, INC. DRAWING SCALE: HORIZ: 1" = 400' VERT: DATE: FEBRUARY 2026 SURVEY BY: BGE, INC. F.B. NO.:	DESIGNED BY: JWM DRAWN BY: GA SHEET NO. 18 OF 40 CITY DWG NO.:

b:\p\cadd\2026\15616-00\15616-00-18.dwg

FORT BEND COUNTY M.U.D. NO. 214 - WOODS ROAD OFFSITE UTILITIES 15616-00

